

**Hypoxia-induced TET1 facilitates trophoblast cell migration and invasion
through HIF1 α signaling pathway**

**Jingping Zhu¹, Kai Wang¹, Ting Li², Jiayu Chen¹, Dandan Xie¹, Xinwen Chang¹,
Julei Yao¹, Jinting Wu¹, Qian Zhou¹, Yuanhui Jia^{1*} & Tao Duan^{2*}**

1 Clinical and Translational Research Center, Shanghai First Maternity and Infant Hospital, Tongji University School of Medicine, Shanghai, 200040, China.

2 Department of Obstetrics, Shanghai First Maternity and Infant Hospital, Tongji University School of Medicine, Shanghai, 201204, China.

*corresponding authors: Y.J. (email: yuanhui.jia@163.com) & T.D. (email: tduan@yahoo.com)

Table1: Sequence of the primers for real-time qPCR.

Target	Sequence (5' → 3')
18S	F:GGCGGCGTTATTCCCATGA R:GAGGTTTCCCGTGTTGAG
TET1	F:GAAAGAAGAGGGCTGCGATG R:TGCACGGTCTCAGTGTTACT
TET2	F:ACAGAAGCAAGAACAGCAGC R:AGCTTGCAGGTGGATTCTCT
HIF1 α	F: GAACGTCGAAAAGAAAAGTCTCG R:CCTTATCAAGATGCGAACTCACA
HIF2 α	F:CGGAGGTGTTCTATGAGCTGG R:AGCTTGTGTGTTTCGCAGGAA
PGK1	F:TGGACGTTAAAGGGAAGCGG R:GCTCATAAGGACTACCGACTTGG
LDHA	F:ATGGCAACTCTAAAGGATCAGC R:CCAACCCAACAACCTGTAATCT
BNIP3	F:CCTTCCAATCTCTGCTGCTCT R:TCCACTAACGAACCAAGTCAG
ENO1	F:GTGTGGCTCTAACCCTCTGG R:GGACCTTCTGTGGGACCTCT

Table2: List of antibodies used in the western blot.

Protein	Origin	Dilution	Incubation period
α -Tubulin	GTX628802, Gene Tex.	1:1,000	4 °C, overnight
HIF1 α	#3716, CST.	1:1,000	4 °C, overnight
HIF2 α	AF2997, R&D.	1:1,000	4 °C, overnight
TET1	GTX124207, Gene Tex	1:1,000	4 °C, overnight
TET2	Sc-136926, Santa Cruz.	1:100	4 °C, overnight

Figure-S1: The mRNA expression of HIF1 α was not regulated by TET1 by TET1 in cells exposed to 21% O₂. (A) The HIF1 α mRNA expression in shCtrl and shTET1 JEG3 cells exposed to 21% O₂. (B) The HIF1 α mRNA expression in the negative control group and TET1 overexpression group of JEG3 cells exposed to 21% O₂.

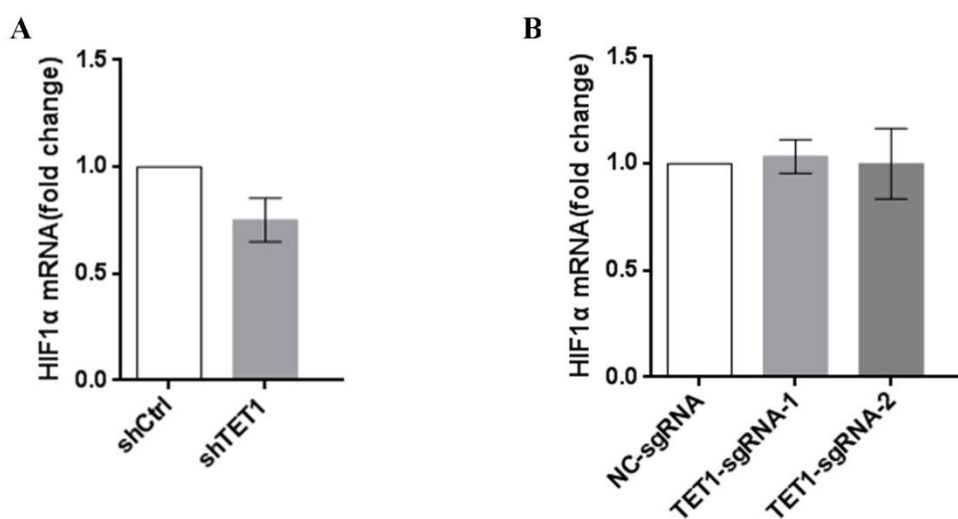


Figure-S2: The DNA methyltransferases inhibitor (5-aza-Dc, AZA) abolished the TET1-knockdown mediated suppression of HIF1 α mRNA levels. (A) The HIF1 α mRNA expression of JEG3 cells treated with different dose of AZA (0, 5, 10 and 20 μ M) for 72 hours. (*P<0.05, one-way ANOVA) (B) The HIF1 α mRNA expression in shCtrl and shTET1 JEG3 cells treated with 20 μ M AZA for 72 hours.

