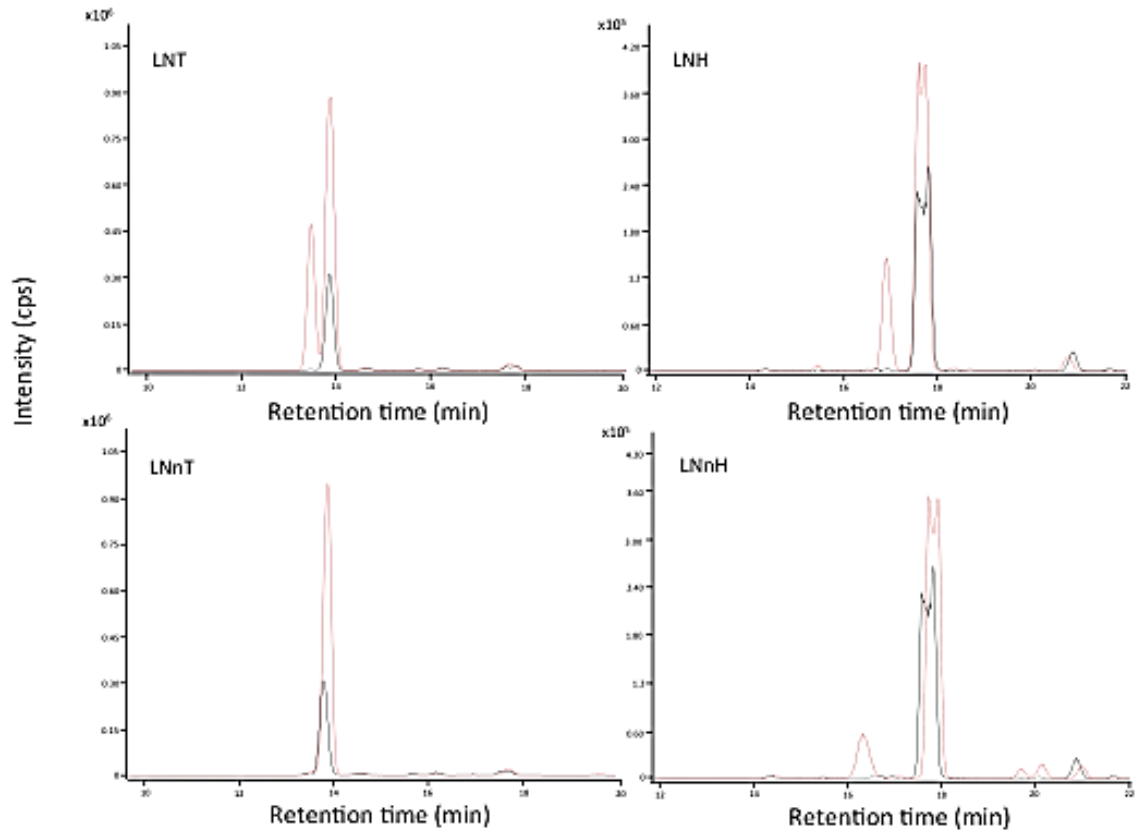


Supplementary Figure S1. Base peak chromatogram and extracted-ion chromatograms for the most abundant OS in porcine milk at prepartum stage. Blue circle = glucose; yellow circle = galactose; red triangle = fucose; violet diamond = sialic acid.



Supplementary Figure S2. Overlay of extracted ion chromatograms from unspiked colostrum (black line) and spiked colostrum (red line) using: Lacto-N-Tetraose (LNT) standard, Lacto-N-Hexose (LNH) standard, Lacto-N-neoTetraose (LNnT) standard and Lacto-N-neoHexose (LNnH) standard.