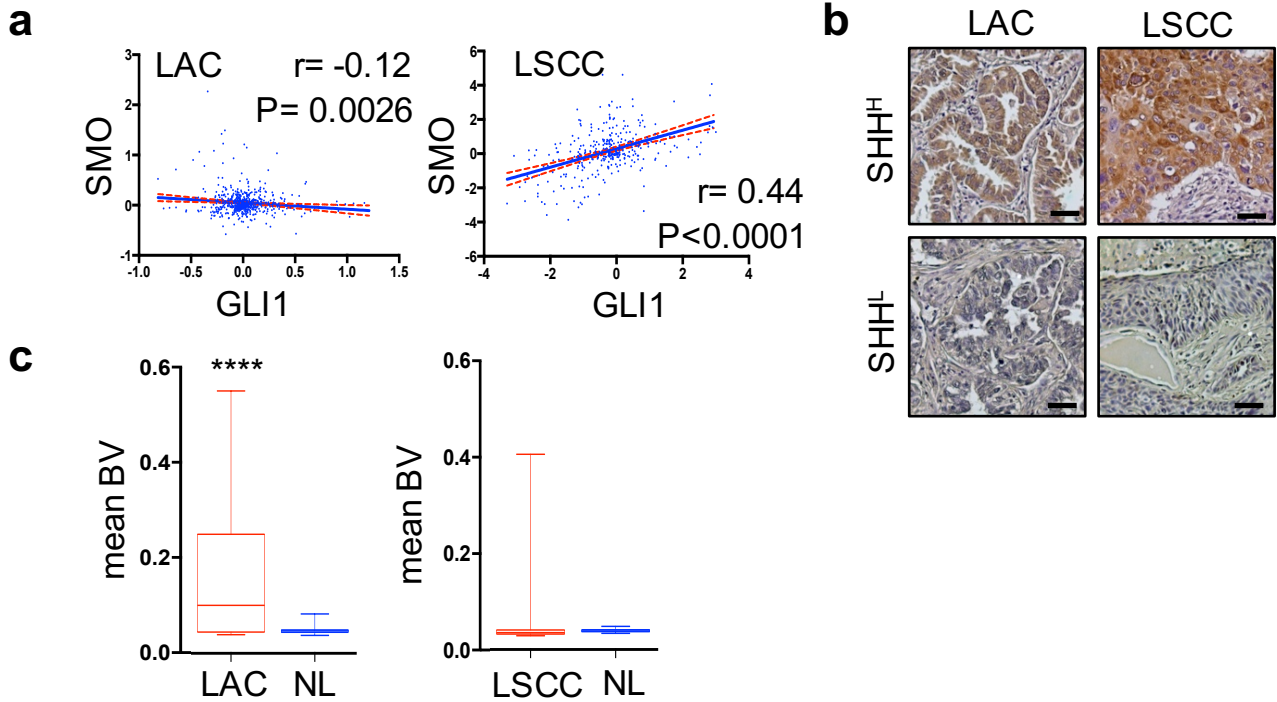
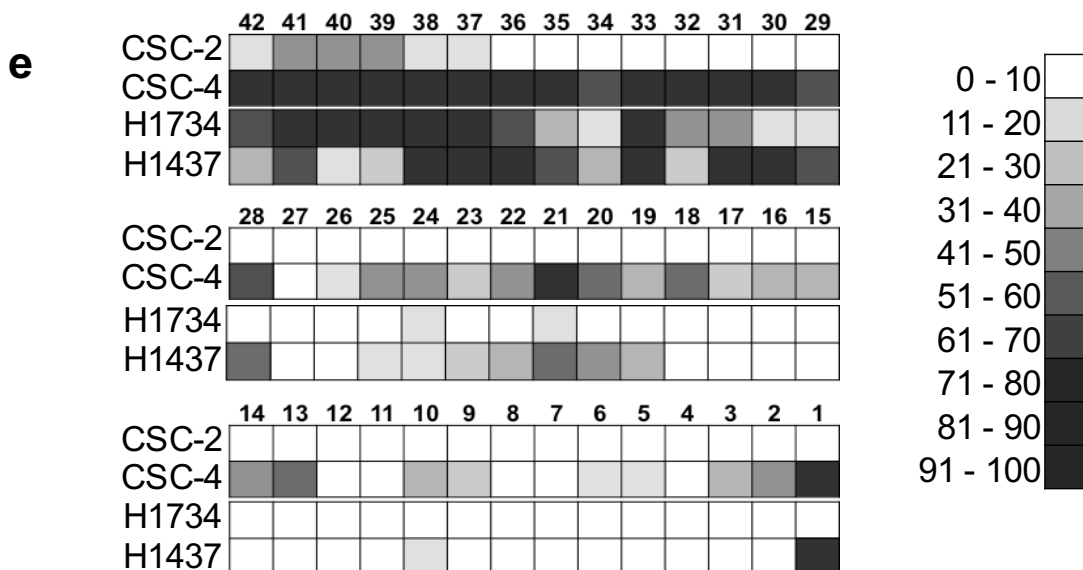


Supplementary Figure 1

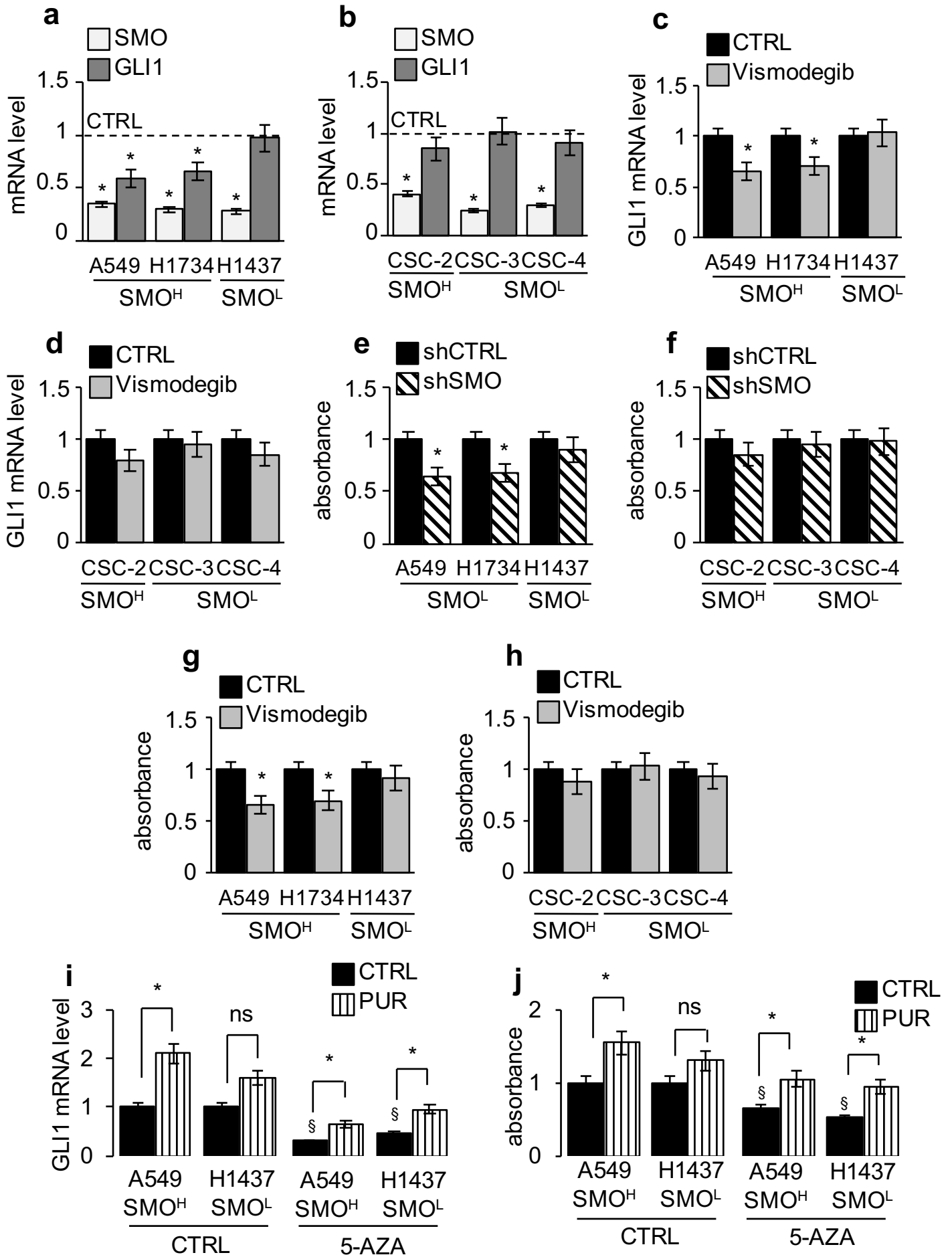


d

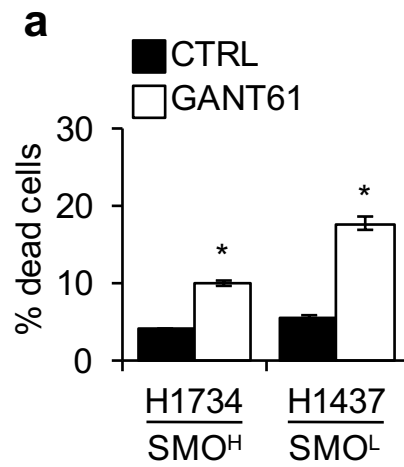
ggcaagtttatttcccagacacctgttcc**cg**caggtaacagcagccagagcagctgc**cg**tgagtg
actctgaggt**cg**tctctctcaaaggtcc**cg**agctggaaggatttgagaag**cg**caaaccacaac
ccaggttcttctccatggggccc**cg**ggata**cg**ttggaaaatctaaccaaaagcaggaaaaactggc
gggcctggagaa**cg**gggcagagatggaacagaagtcccc**cg**ttgacttcaggcatcccctgtcttt
cccctctgagccaggagaaaagtc**cg**cttctctgcaga**cg**acctcagaccaagcaaggtgcc**cg**c
cgagtctctccttgaggct**cg**gccc**cg**atttccactcatctctttcccc**cg**gg**cg**ggg**cg**
cgggcagg**cg**gggtcaccagatccccctagcc**cg**ggcccctccagg**cg**ccaggga**cg**ctga**cg**ctc
g**cg**ctcttctctct**cg**cctcccctcccacctctc**cg**ctcctt**cg**tccagtcctccccagcc
t**cg**g**cg**cagggggg**cg**ggcttggtc**cg**g**cg**aggcc**cg**tgcattccagagagcccag**cg**agctag
agcaaaaaggagc**cg**ggt**cg**c**cg**g**cg**gggagagtt**cg**gggggctg**cg**g**cg**gctg**cg**ggg**cg**aagg
tggctgctgggc**cg**g**cg**ggctgg**cg**g**cg**ggg**cg**gagc**cg**gagctgact**cg**cacccc**cg**gccc**cg**g
tctggcctccct**cg**g**cg**ggg**cg**gggaggtggctttaatggtgggagaggggaatggggctggggatt
gggggcccaggggtctcctaGGGCTGAAGACAACCTGGATTG**CG**AGGCTAGGGCTTGGGGAGT**CG**
TGCATCC**CG**TTC**CG**GGCCTC**CG**CAGCCCAACATGGGCC**CG**GGTTCCAAAGTTTG



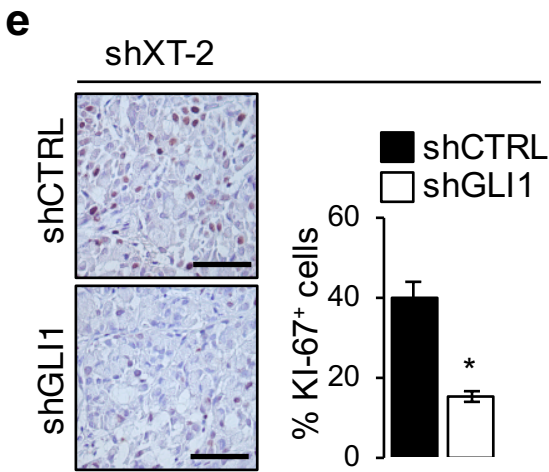
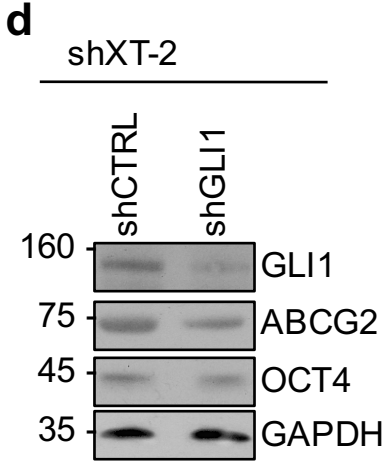
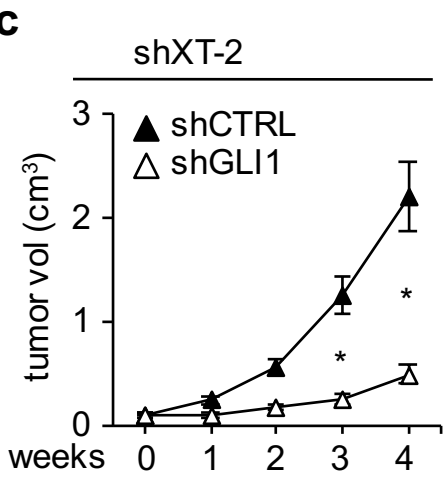
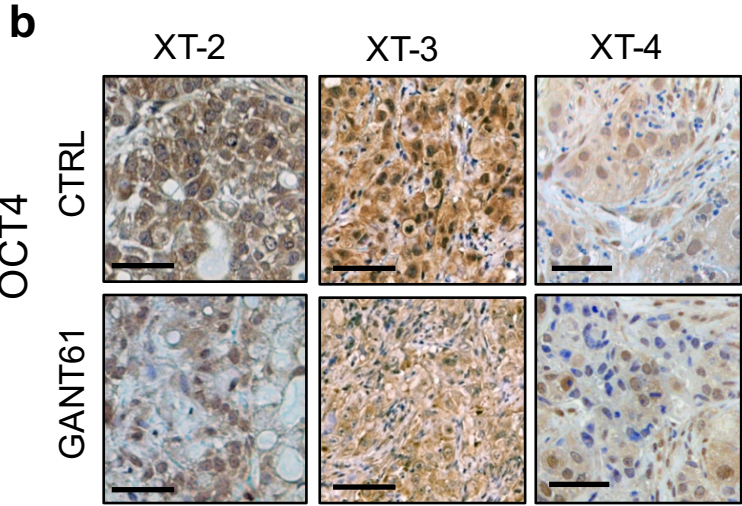
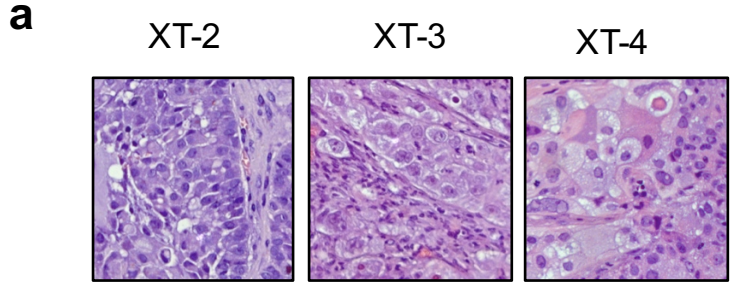
Supplementary Figure 2



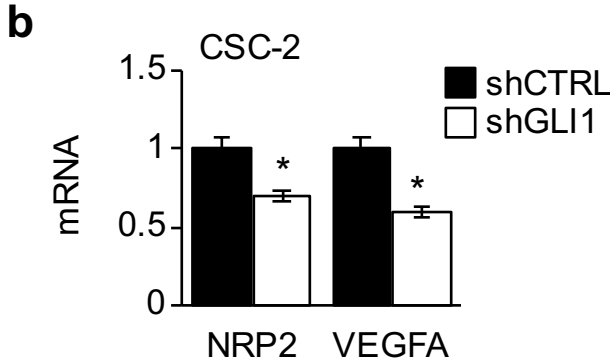
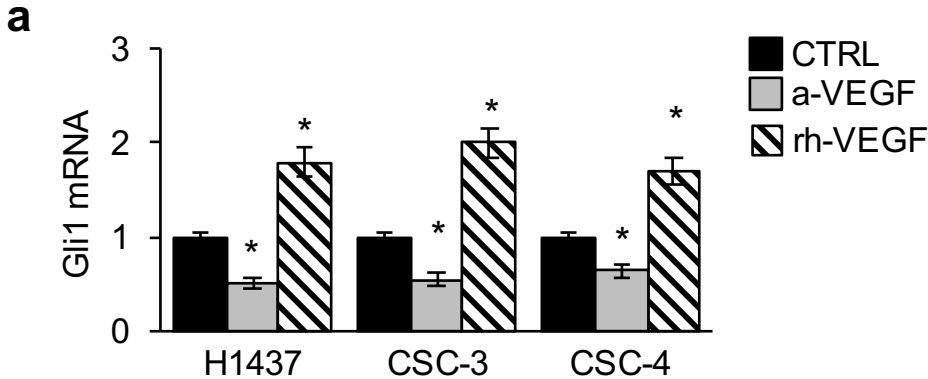
Supplementary Figure 3



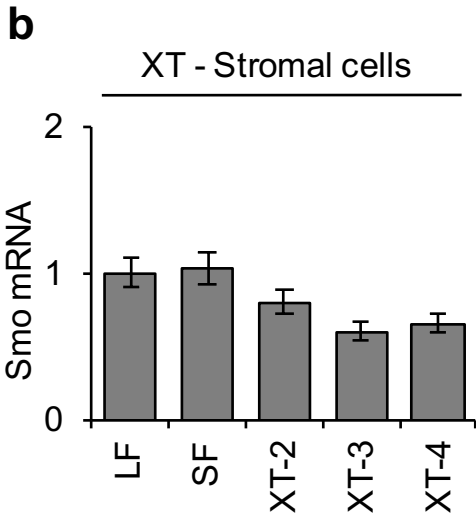
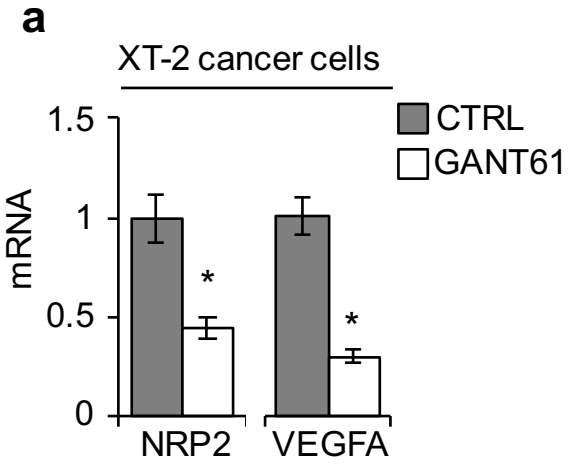
Supplementary Figure 4



Supplementary Figure 5



Supplementary Figure 6



Supplementary Table 1

Genotype for commercial cell lines and CSC

| Cell line | Histotype | KRAS | BRAF | EGFR | EML4-ALK fusion | HER2 |
|----------------------------|-----------|-----------------------|------|------|-----------------|------|
| Commercial | | | | | | |
| H1734 | LAC | mut c.37G>T p.G13C | wt | wt | NO | wt |
| H1437 | LAC | wt | wt | wt | NO | wt |
| H520 | LSCC | wt | wt | wt | NO | wt |
| A549 | LAC | mut c.34G>A p.G12S | wt | wt | NO | wt |
| Patient-derived CSC | | | | | | |
| CSC-1 | LSCC | wt | wt | wt | NO | wt |
| CSC-2 | LAC | mut c.34G>T p.G12C | wt | wt | NO | wt |
| CSC-3 | LAC | wt | wt | wt | NO | wt |
| CSC-4 | LAC | wt | wt | wt | NO | wt |