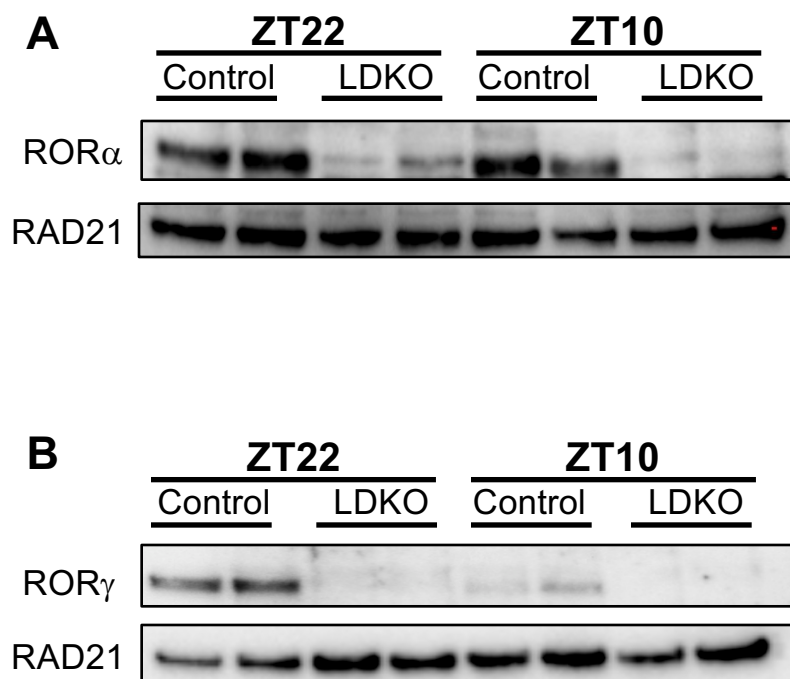


## Figure S1



**Supplemental Fig. 1. ROR knockout was confirmed by western blot.** (A) Western blot of ROR $\alpha$ , and loading control RAD21 in livers of *Rora*<sup>fl/fl</sup>/*Rorc*<sup>fl/fl</sup> mice injected with GFP (control) and Cre (KO), harvested at ZT22 and ZT10. (B) Western blot of ROR $\gamma$ , and loading control RAD21 in livers of *Rora*<sup>fl/fl</sup>/*Rorc*<sup>fl/fl</sup> mice injected with GFP (control) and Cre (KO), harvested at ZT22 and ZT10.