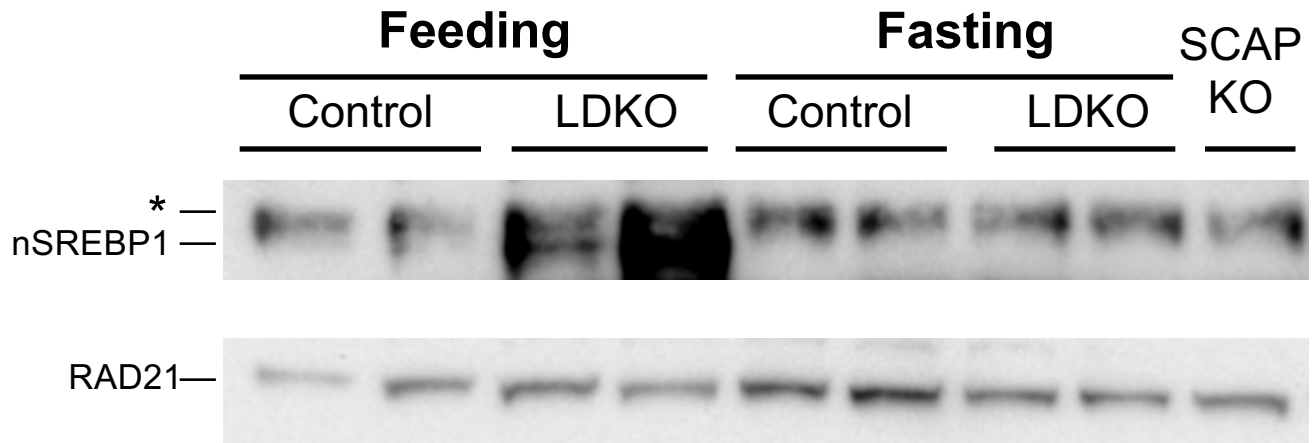


Figure S2



Supplemental Fig. 2. Activation of SREBP1 in ROR LDKO Liver at ZT22 in Fed, But Not Fasted, State . Western blot of active form of nuclear SREBP1, and loading control RAD21 in the liver of *Rora^{fl/fl}/Rorc^{fl/fl}* mice injected with GFP (control) and Cre (KO), fed a high fat diet for 6 weeks, and harvested at ZT22. The liver lysate of *Scap^{fl/fl}* mice injected with Cre (SCAP KO) was used as negative control for nSREBP1. "*" denotes non-specific band.