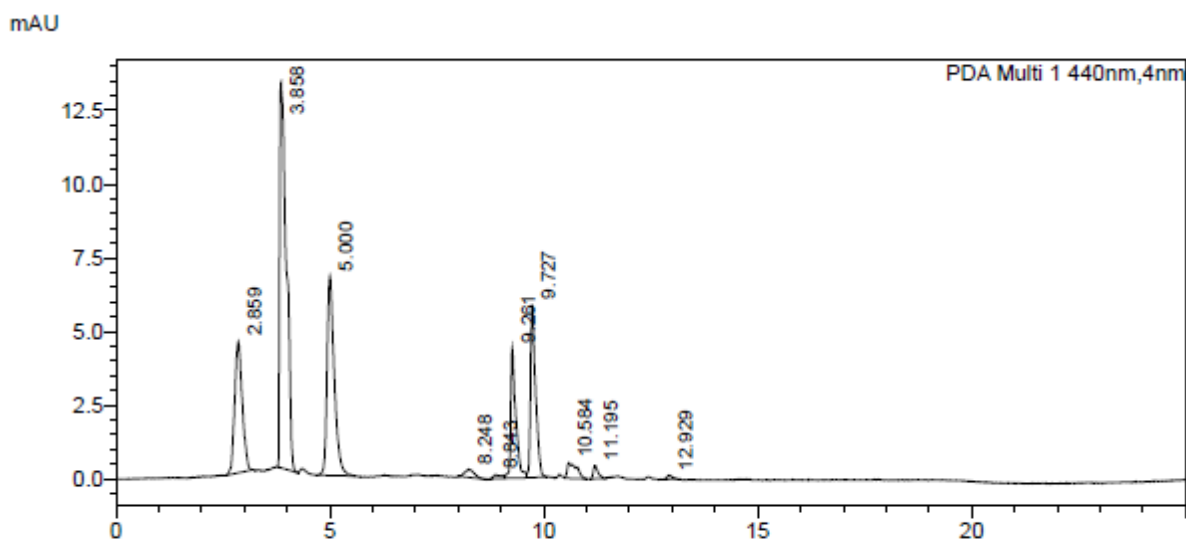


Supplementary Information

A)



B)

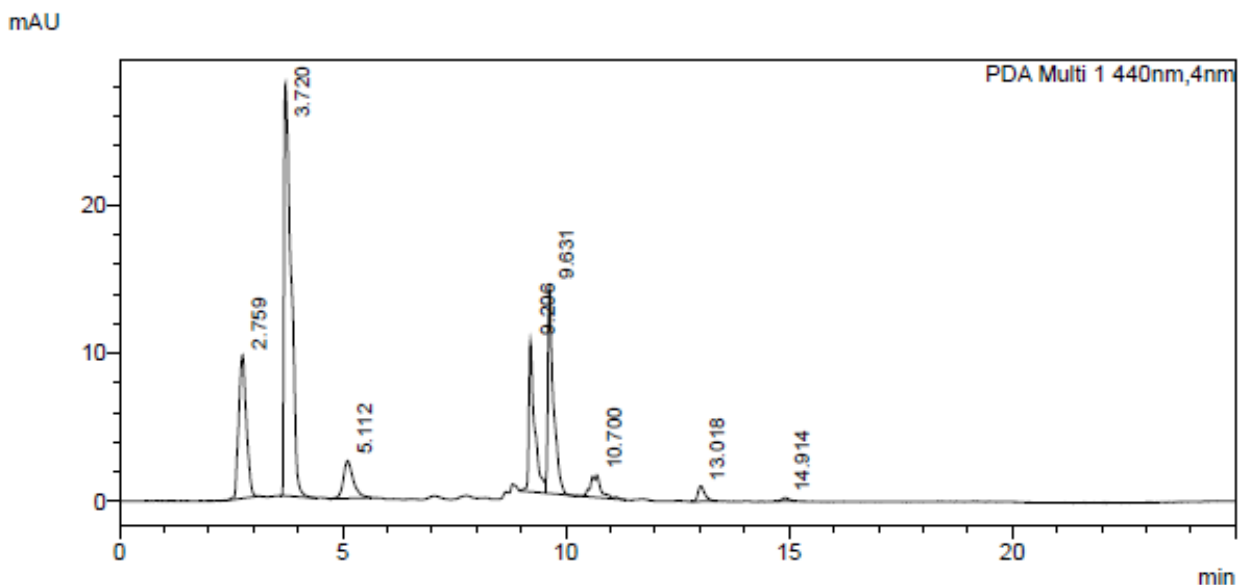


Fig. S1. HPLC chromatograms of (A) a hydroalcoholic extract of *Crocus sativus* stigma, and (B) crocin (obtained from sigma). The chromatograms showed the presence of primarily six crocins including *trans*-5-ng-crocin ($t_R = 2.8$ min), *trans*-4-GG-crocin ($t_R = 3.8$ min) *trans*-3-Gg-crocin ($t_R = 5.0$ min), *trans*-2-gg-crocin ($t_R = 8.8$ min), *cis*-4-GG-crocin ($t_R = 9.7$ min) and *cis*-3-Gg-crocin ($t_R = 10.6$ min). The extract was standardized for the content of *trans*-4-GG-crocin as it is the major crocin in the extract. See the results for details.