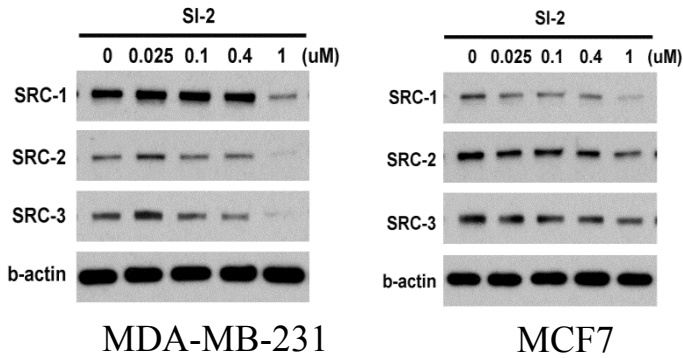
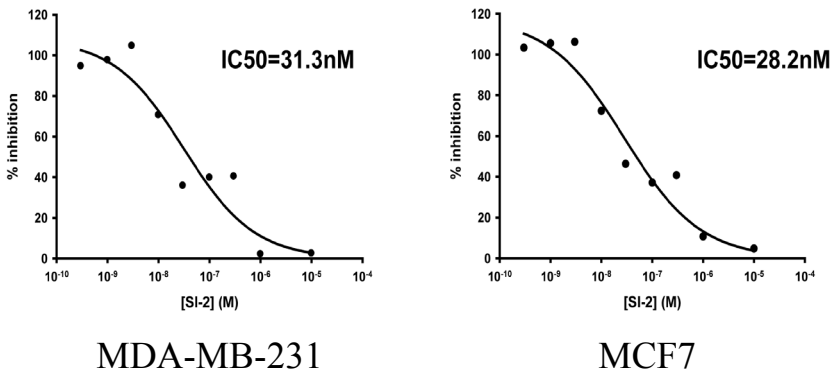


Supplementary Figure 2

A.



B.



Supplementary figure 2. Treatment of breast cancer cells with SI-2 reduces expression of the SRCs. (A-B) MDA-MB-231 and MCF-7 cells were treated with different concentrations of SI-2. (A) Total protein was isolated from cells treated with SI-2 for 24 hours. Immunoblotting was carried out with antibodies to SRC-1, -2, -3 and β -actin. (B) 72 hours post treatment with SI-2 cell viability analysis was carried out using the MTT assay to calculate the IC₅₀ for SI-2 on MCF7 and MDA-MB-231 cells.