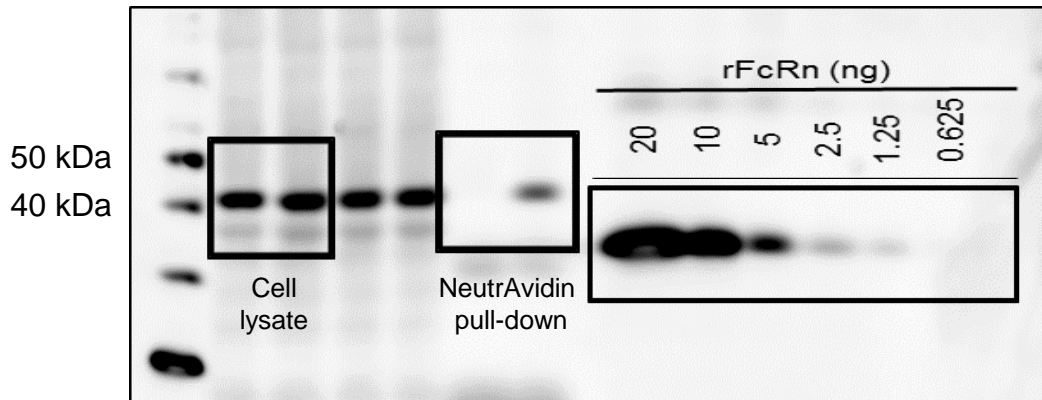


# Supplementary figure 1



Supplementary Figure 1. Representative (uncropped) blot from which cropped images in Figure 2B and 2C are taken. Boxed regions correspond to cropped images in Figure 2. Note that the recombinant FcRn is the extracellular domain only and is therefore lower molecular weight than endogenous full length FcRn. This difference is accounted for in calculations.