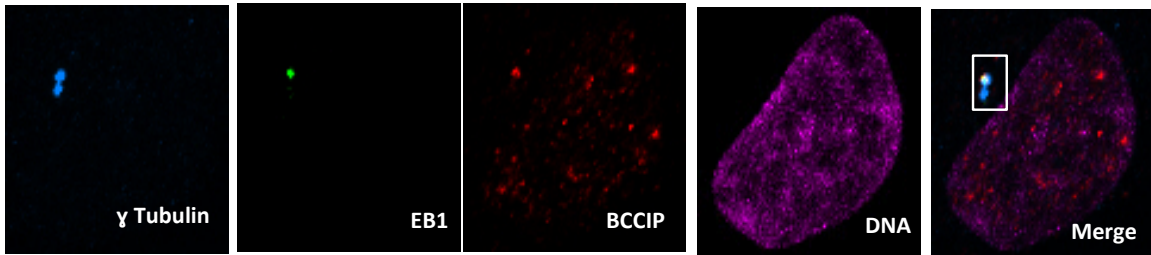
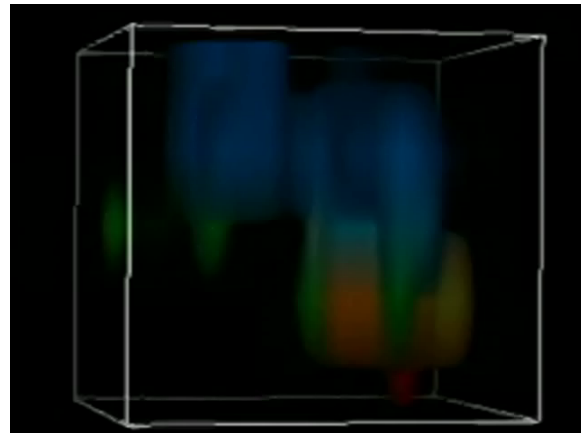


**Supplement S2, three-dimensional reconstruction of the localization of BCCIP to the mother centriole.**

A four-color fluorescent image of a representative interphase cell with BCCIP, EB1,  $\gamma$ -Tubulin, and DNA is depicted. **Movie M1** represents a 3D image of the dissected interphase centrosome, illustrating the preferential localization of BCCIP with the EB1 positive (mother) centriole. **Movie M2** is a typical 3D image of a metaphase cell stained with BCCIP (yellow), spindle (red), and DNA (blue).



**Movie M1**



**Movie M2**

