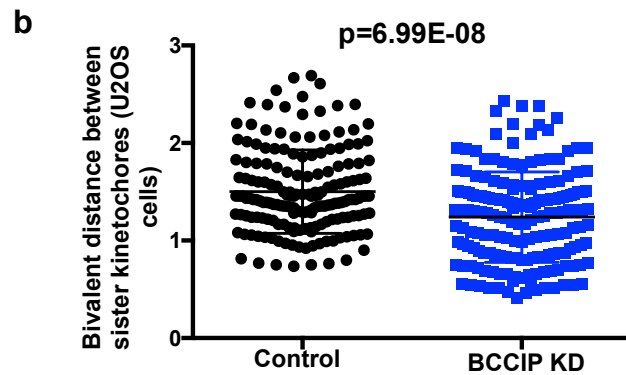
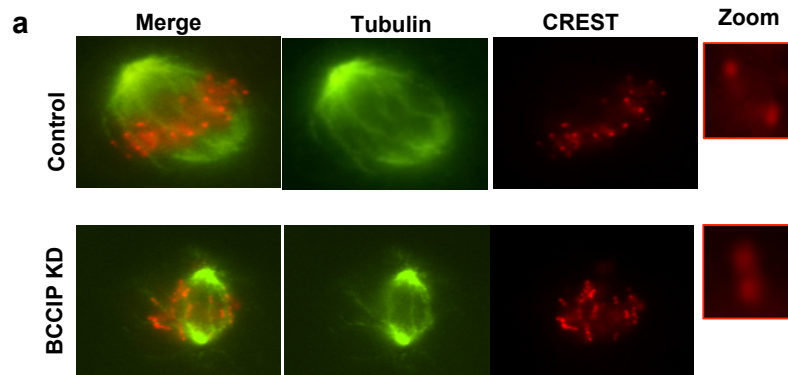


**Supplement S7. The intra-kinetochore distance is reduced in BCCIP deficient U2OS cells.**



Control and BCCIP-KD U2OS cells were stained with CREST and  $\alpha$ -Tubulin. The distance between unambiguous CREST foci that reached maximal intensity in a given focal plane were marked as sister bivalents. The distance between these foci was then measured as described for Figure 8c.

A: representative images of the control and BCCIP knockdown (BCCIP-KD) cells

B: distance between sister-kinetochores