

SUPPLEMENTARY MATERIAL

Molecular Determinants for STIM1 Activation During Store-Operated Ca^{2+} EntryG. Ma¹, S. Zheng², Y. Ke¹, L. Zhou², L. He¹, Y. Huang³, Y. Wang² and Y. Zhou^{1,4}

¹Center for Translational Cancer Research, Institute of Biosciences and Technology, Texas A&M University, Houston, TX 77030, USA; ²Beijing Key Laboratory of Gene Resource and Molecular Development, College of Life Sciences, Beijing Normal University, Beijing 100875, China; ³Center for Epigenetic and Disease Prevention, Institute of Biosciences and Technology, Texas A&M University, Houston, TX 77030, USA; ⁴Department of Medical Physiology, College of Medicine, Texas A&M University, Temple, TX 76504, USA

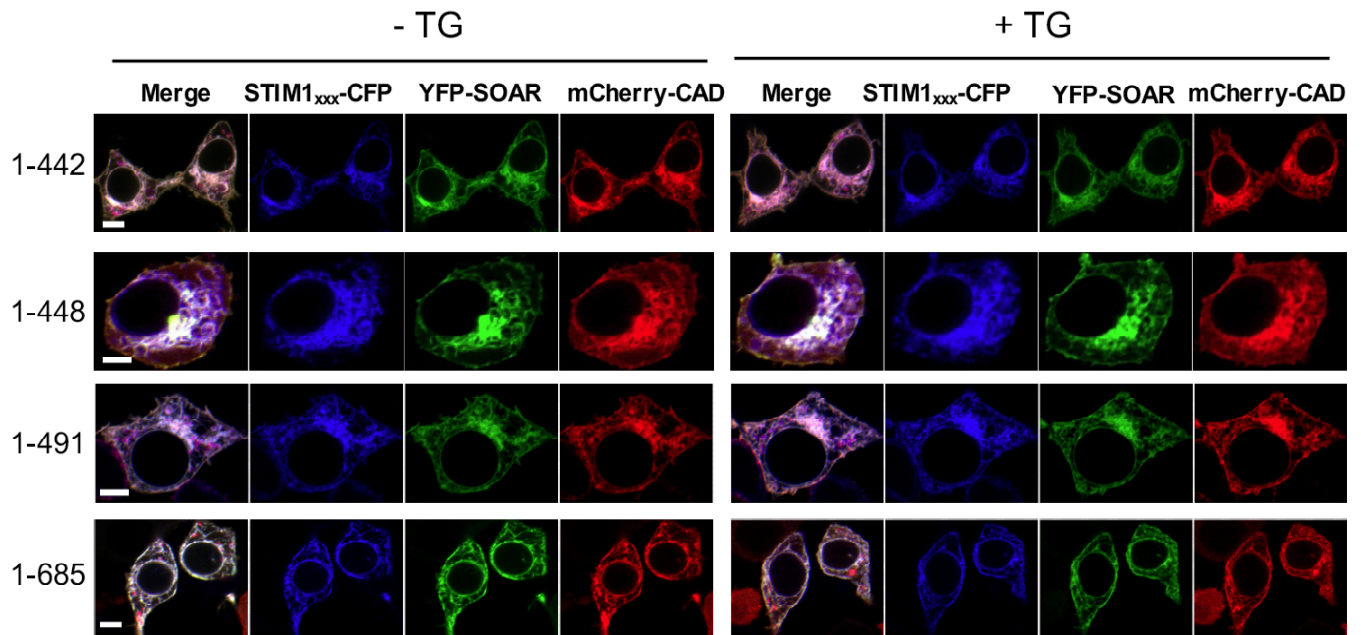


Fig. (S1). Confocal images of HeLa cells co-expressing YFP-SOAR, mCherry-CAD with the indicated STIM1-CFP variants (aa 1-442, 1-448, 1-491 or 1-685) before and after store depletion triggered by 1 μM thapsigargin (TG). Scale bar, 5 μm .