

Supplementary Material

Developmental changes in sleep oscillations during early childhood

Eckehard Olbrich¹, Thomas Rusterholz^{2,3}, Monique K. LeBourgeois^{4,*}, Peter Achermann^{2,5,6,7,*}

¹ Max Planck Institute for Mathematics in the Sciences, Leipzig, Germany

² Institute of Pharmacology and Toxicology, University of Zurich, Switzerland

³ University Hospital of Child and Adolescent Psychiatry and Psychotherapy, University of Bern, Bern, Switzerland

⁴ Sleep and Development Laboratory, Department of Integrative Physiology, University of Colorado Boulder, Boulder, CO, USA

⁵ The KEY Institute for Brain-Mind Research, Department of Psychiatry, Psychotherapy and Psychosomatics, University Hospital of Psychiatry, Zurich, Switzerland

⁶ Zurich Center for Interdisciplinary Sleep Research, University of Zurich, Switzerland

⁷ Neuroscience Center Zurich, University and ETH Zurich, Switzerland

* shared last authorship

Corresponding Author:

Eckehard Olbrich, PhD

Max Planck Institute for Mathematics in the Sciences

Inselstraße 22, 04103

Leipzig, Germany

e-mail: olbrich@mis.mpg.de

Tel. +49 341 9959 568 | Fax +49 341 9959 658

Supplementary Figures S1 to S8: *Top*: Spectrograms, oscillatory events and hypnograms of individual children (A-H) recorded longitudinally at 2Y (a), 3Y (b) and 5Y (c). For details, see Figure 1. ***Bottom*:** Mean power density spectra and event ratios of individual children (A-H) recorded longitudinally. For details, see Figure 3.

Figure S1: CHILD A

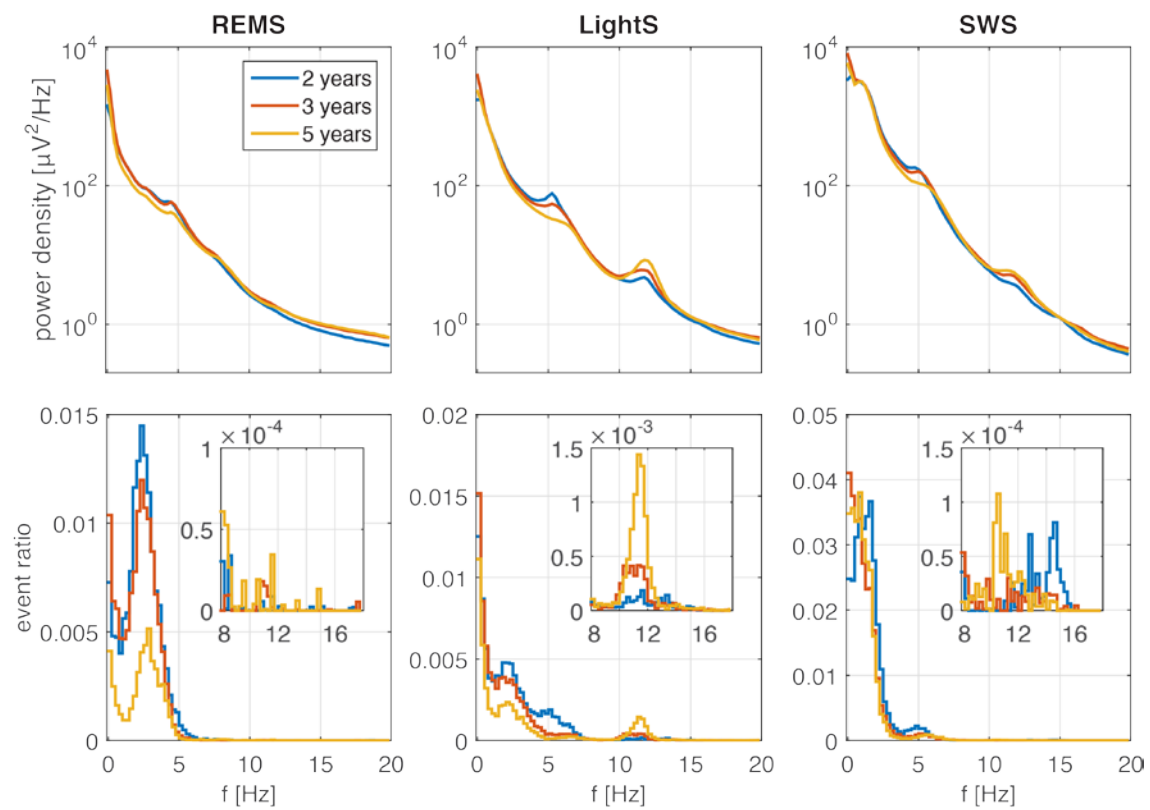
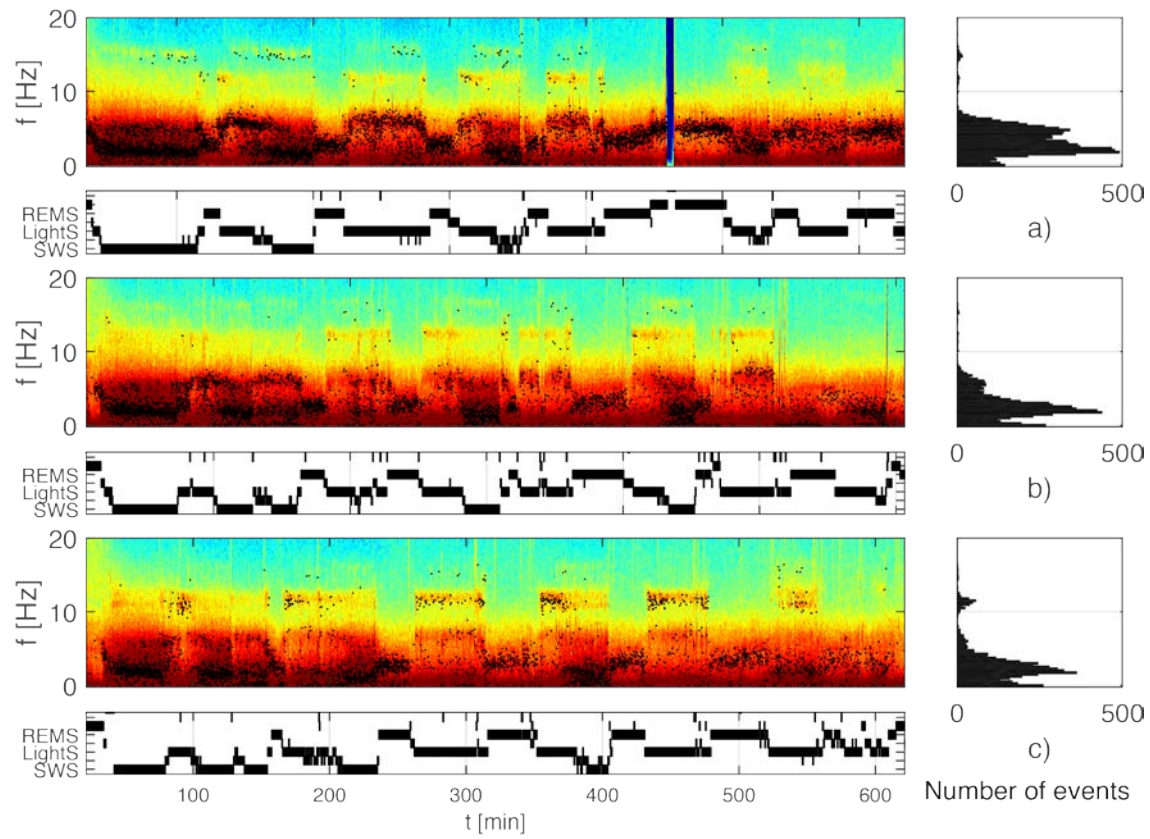


Figure S2: CHILD B

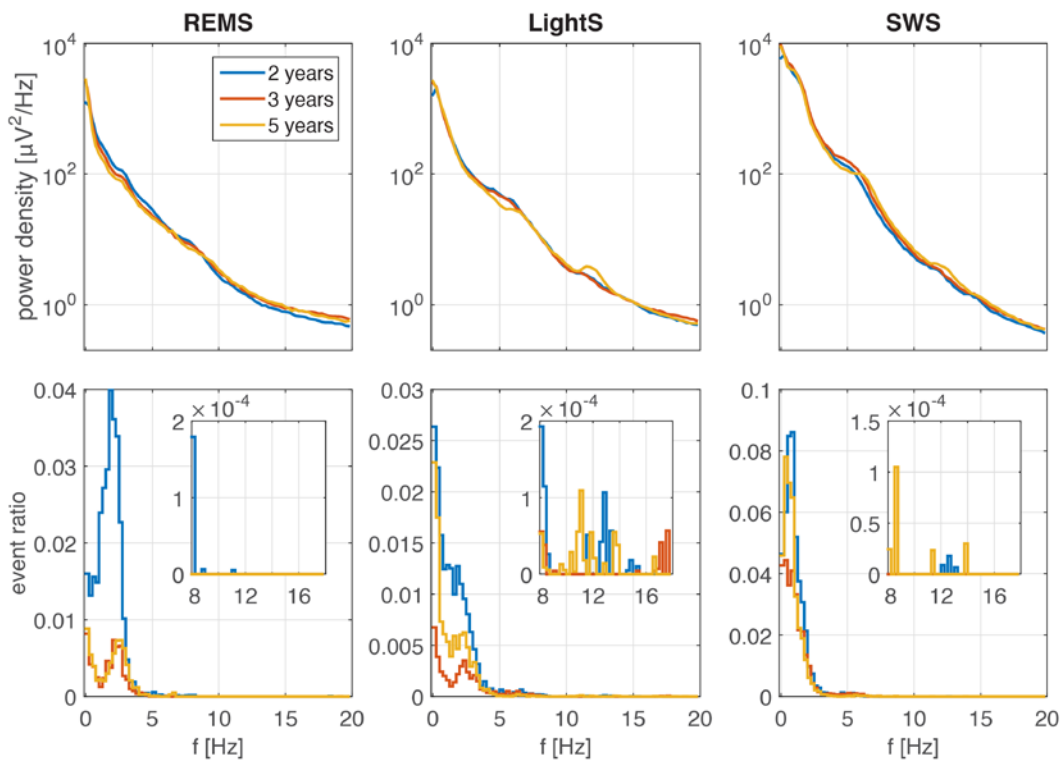
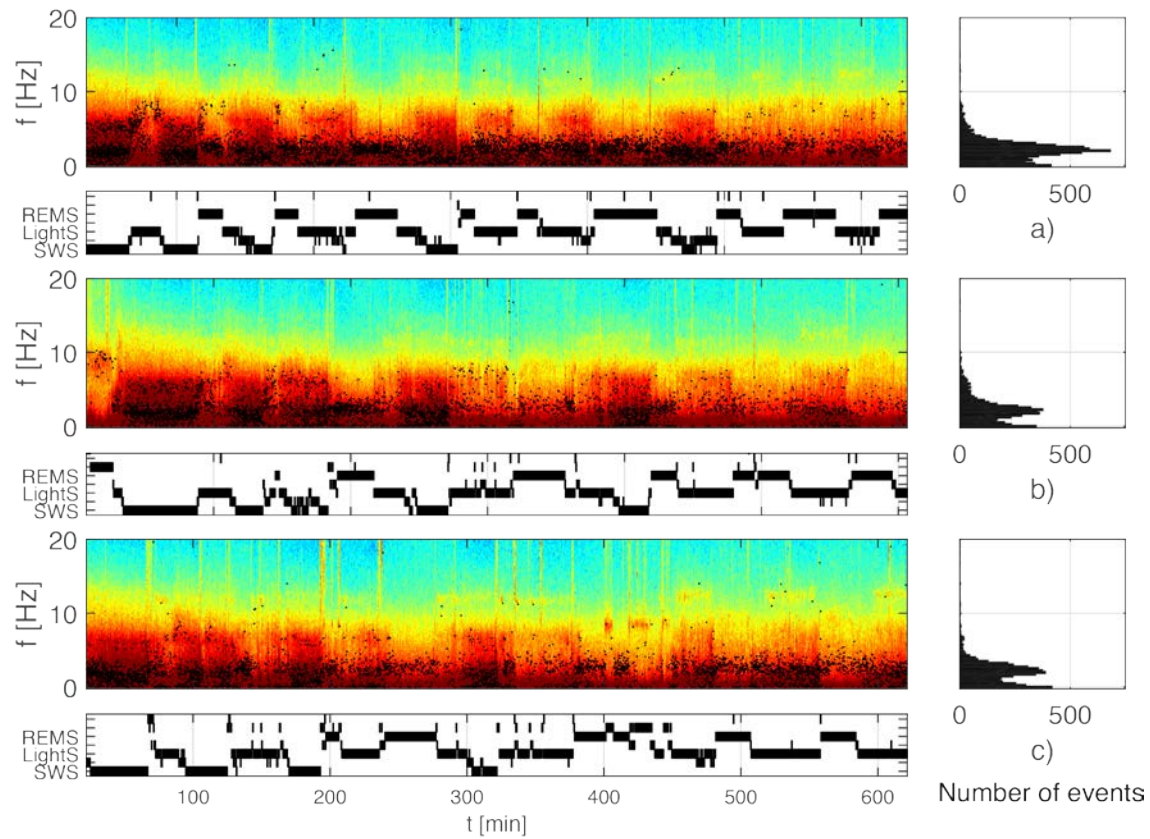


Figure S3: CHILD C

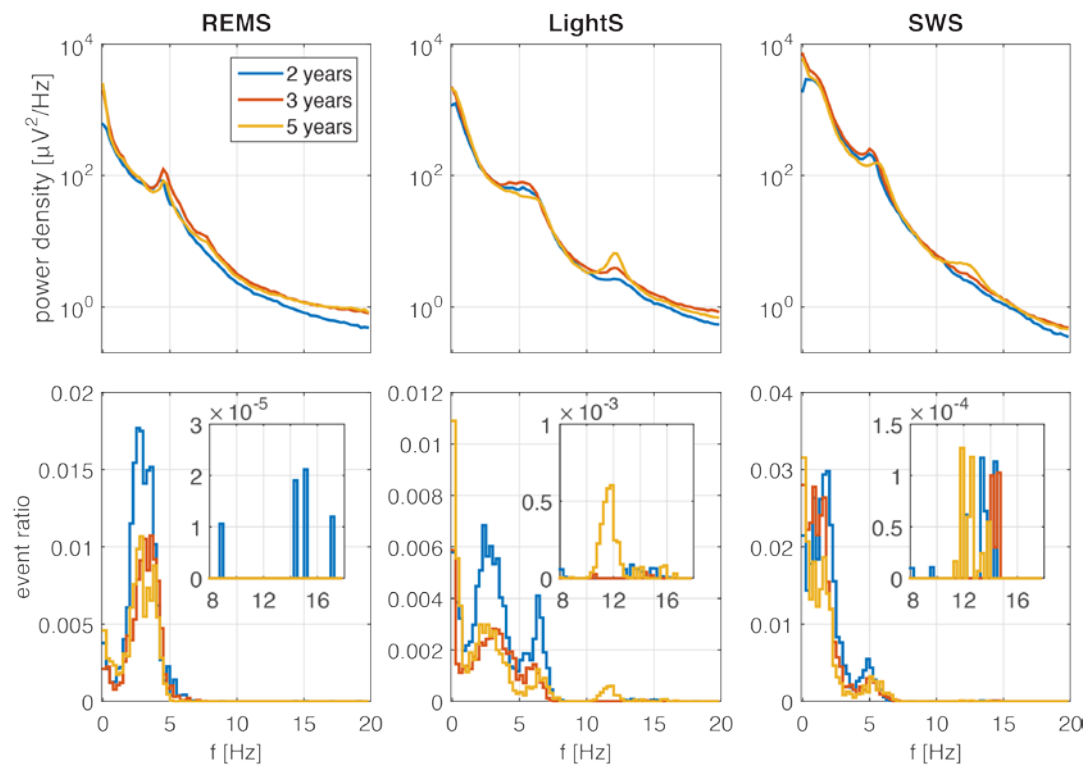
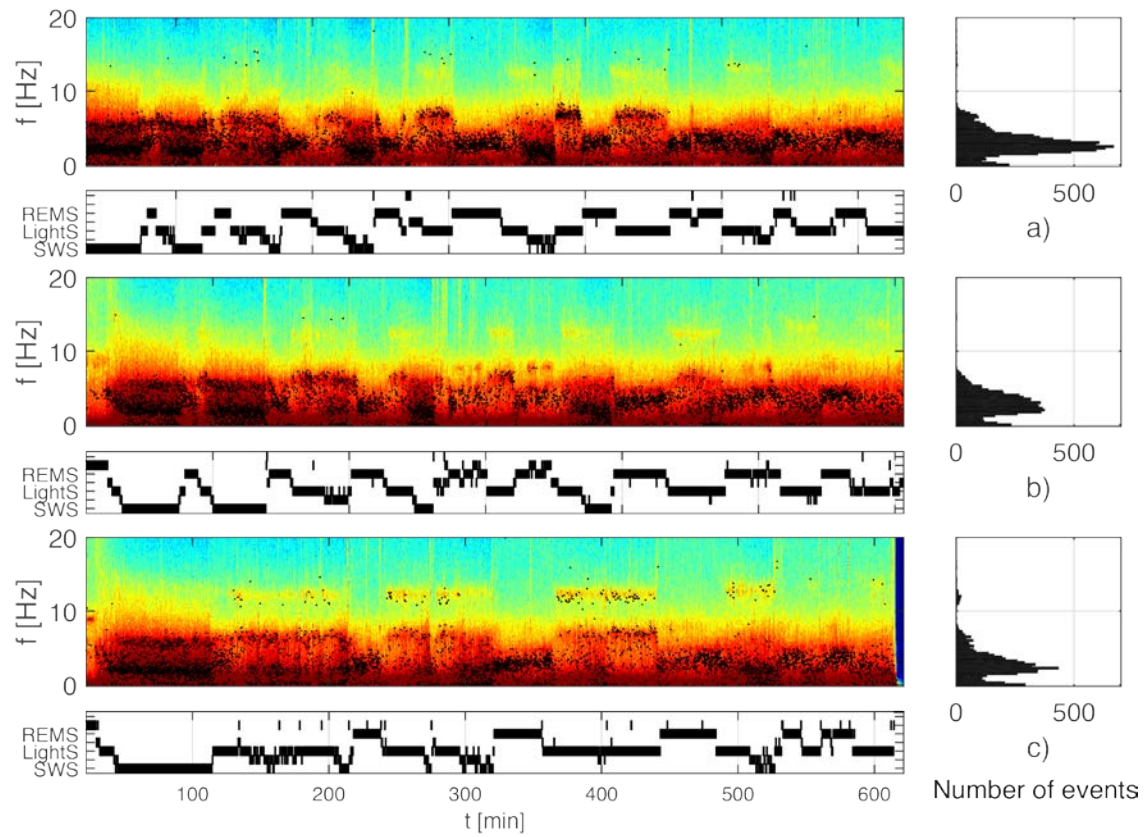


Figure S4: CHILD D

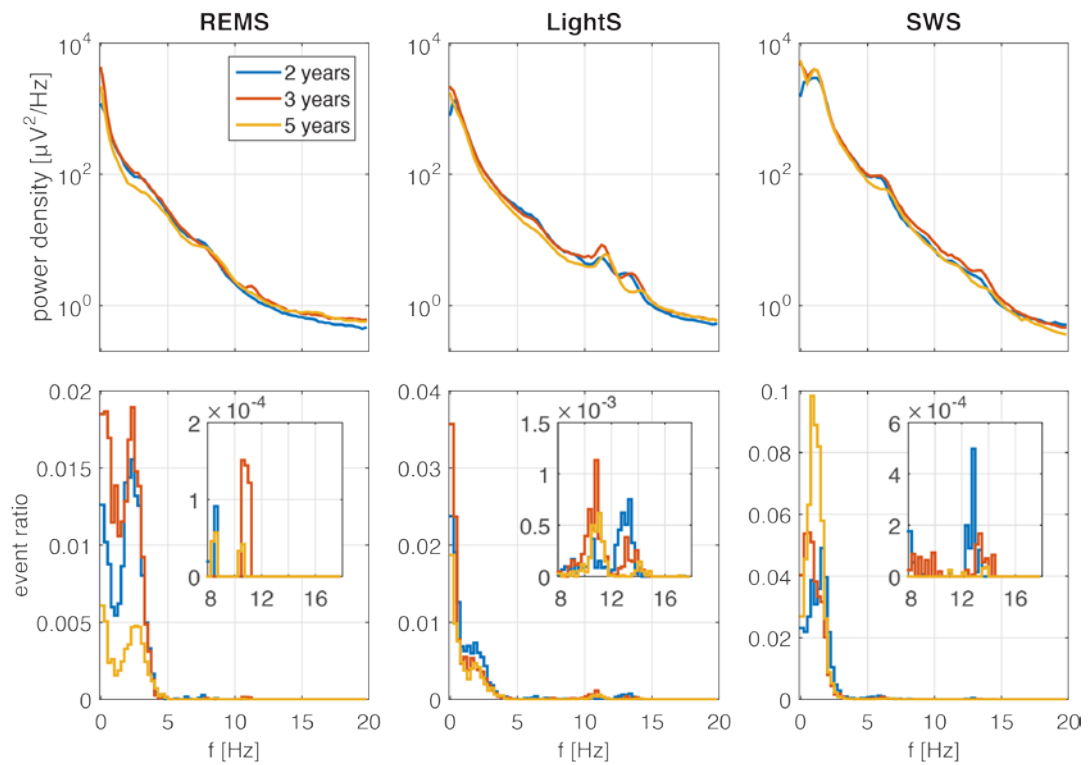
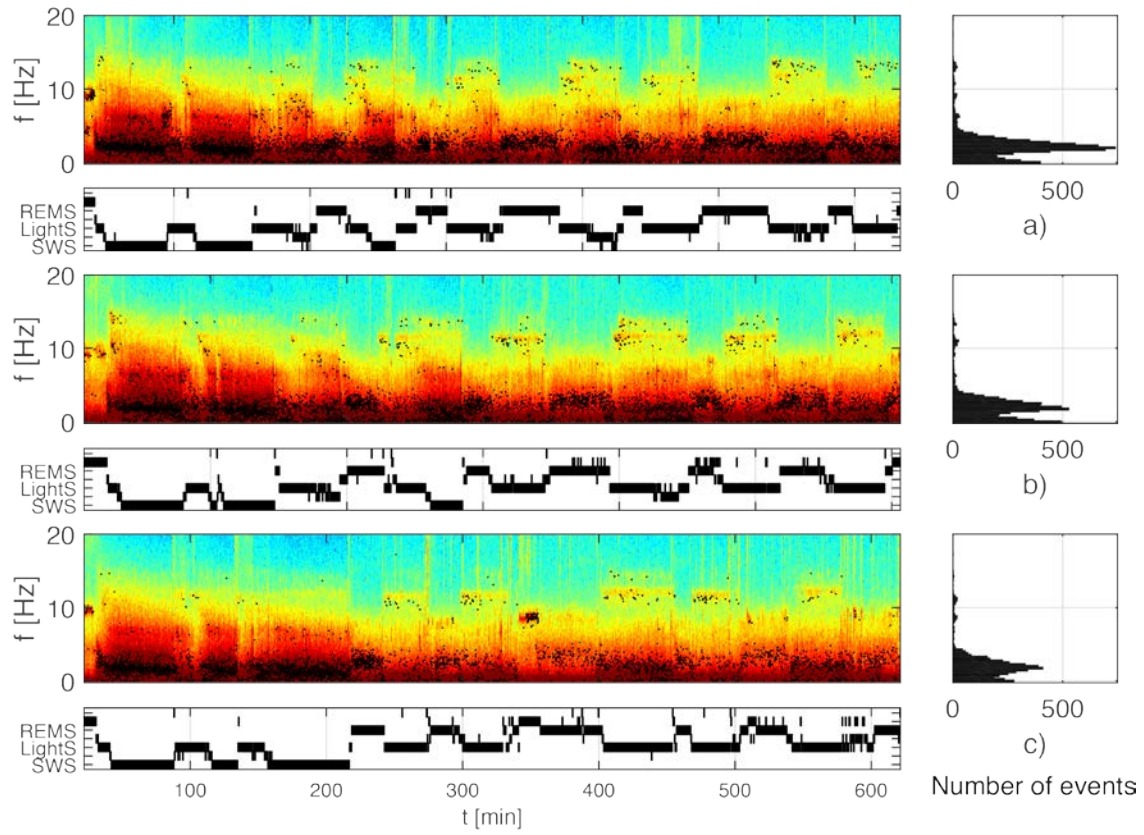


Figure S5: CHILD E

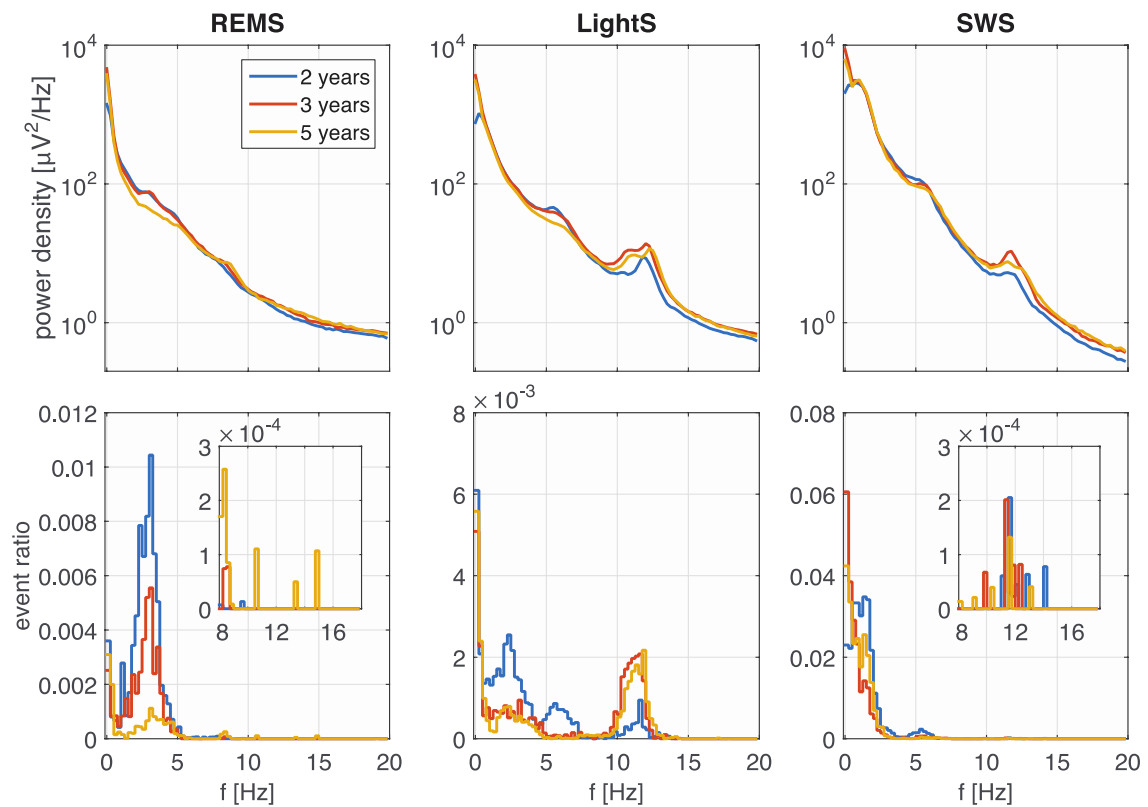
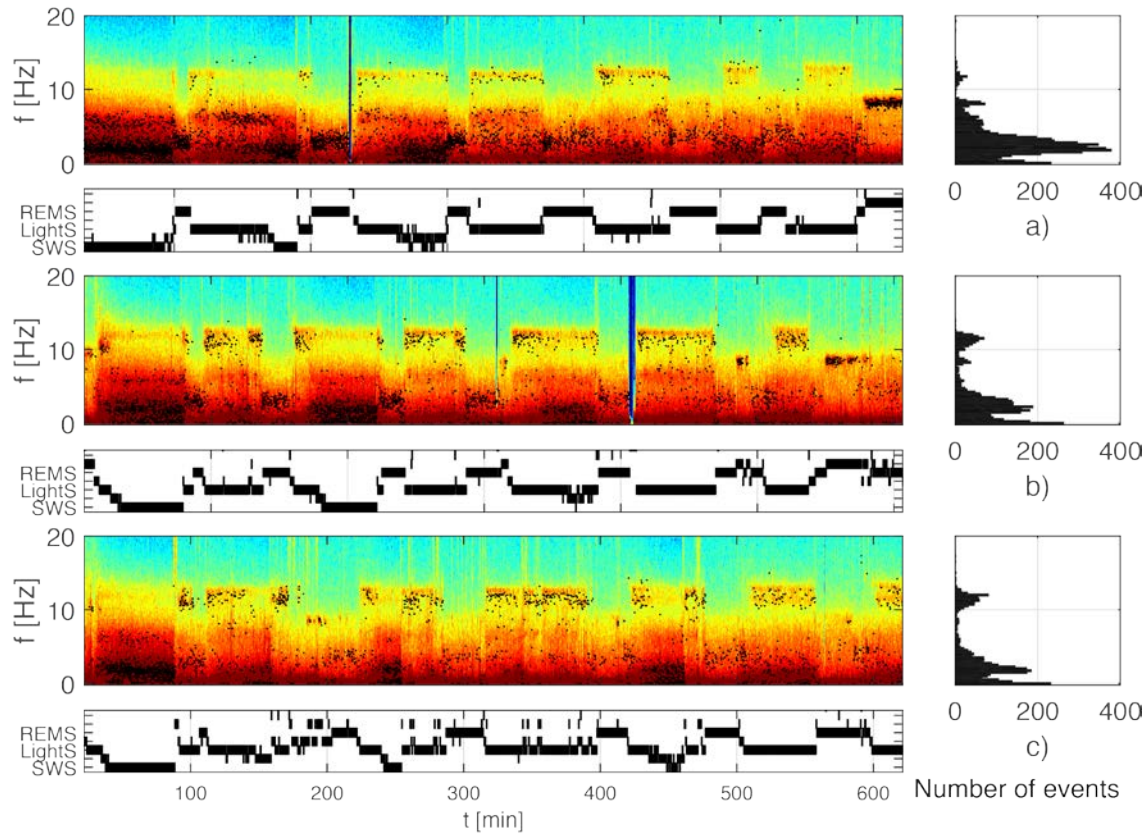


Figure S6: CHILD F

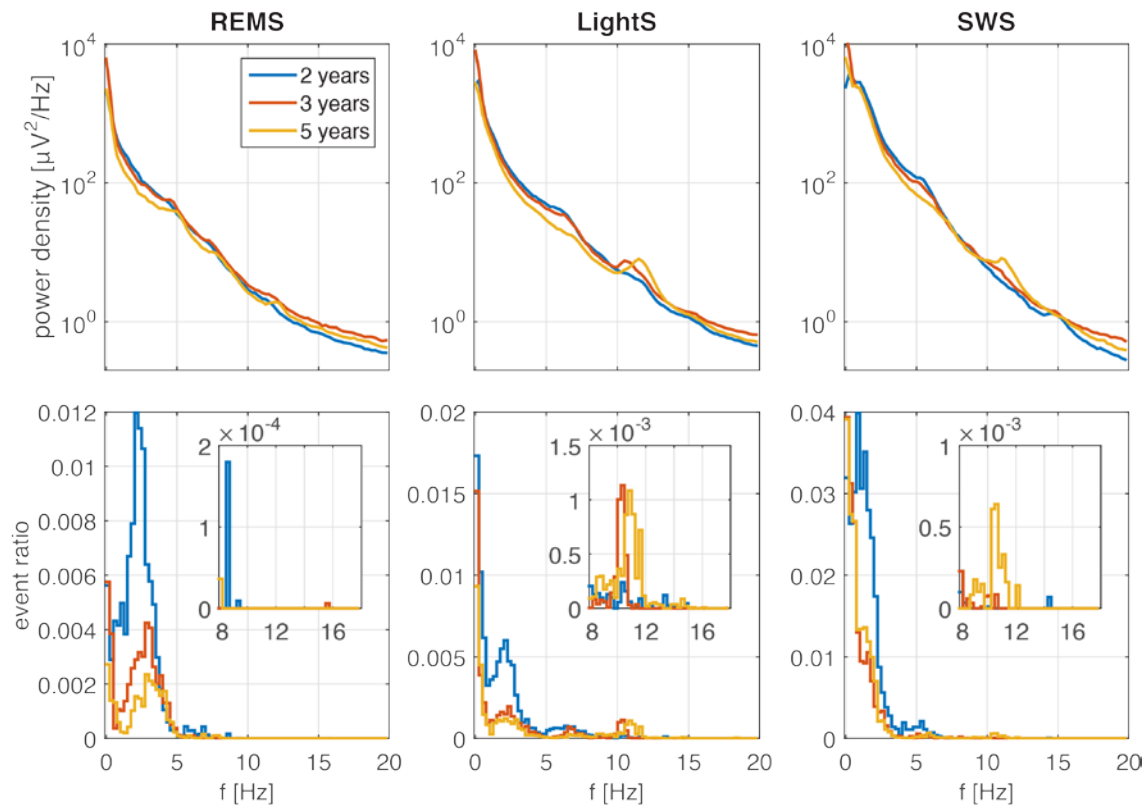
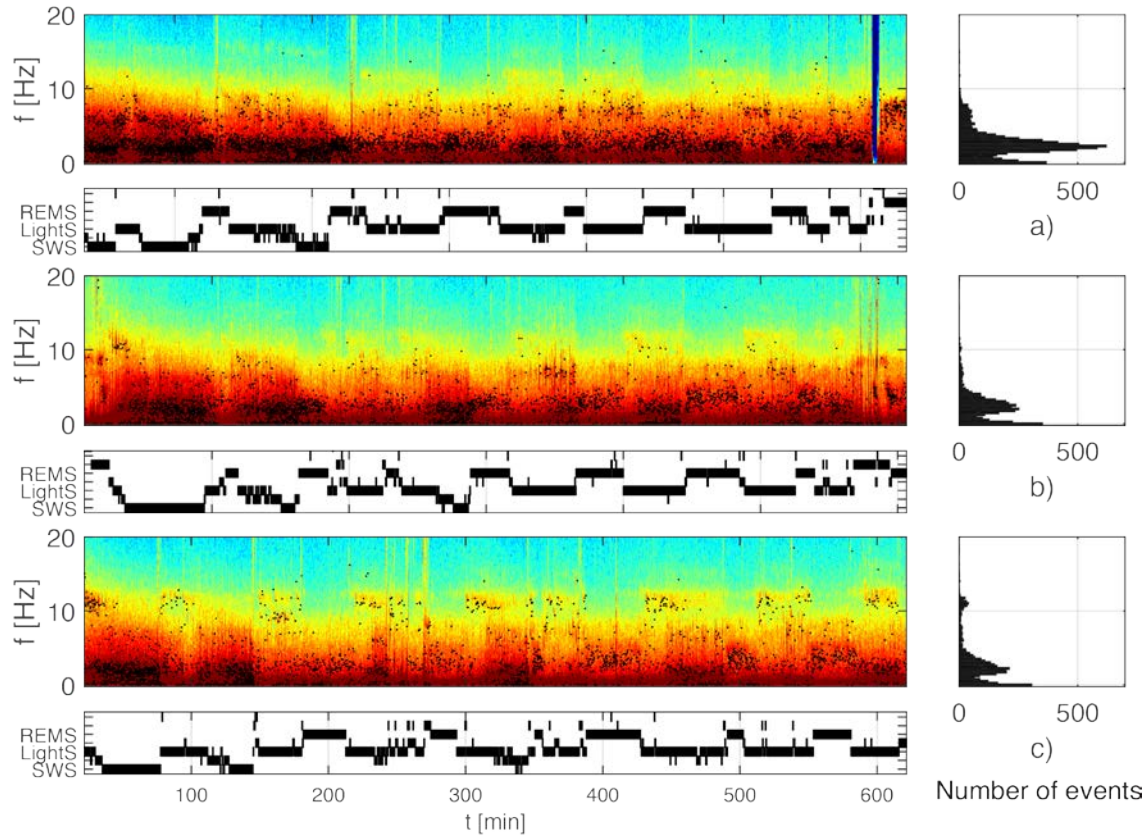


Figure S7: CHILD G

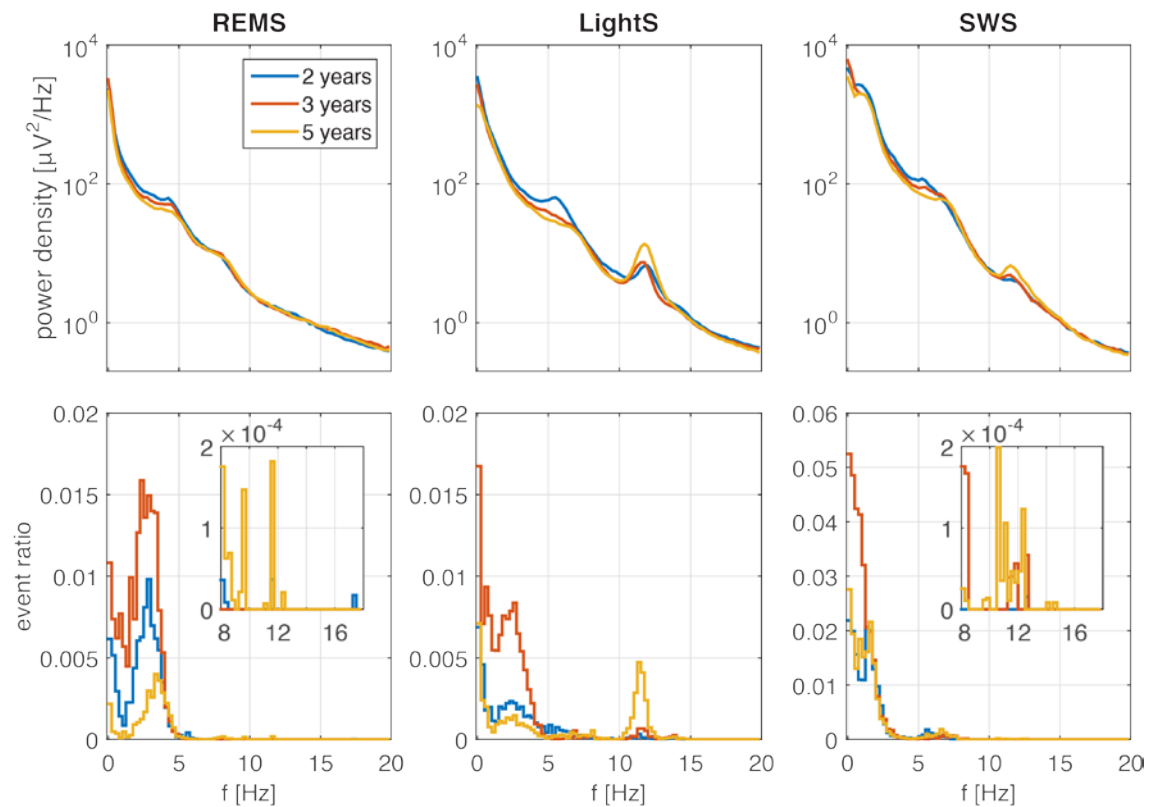
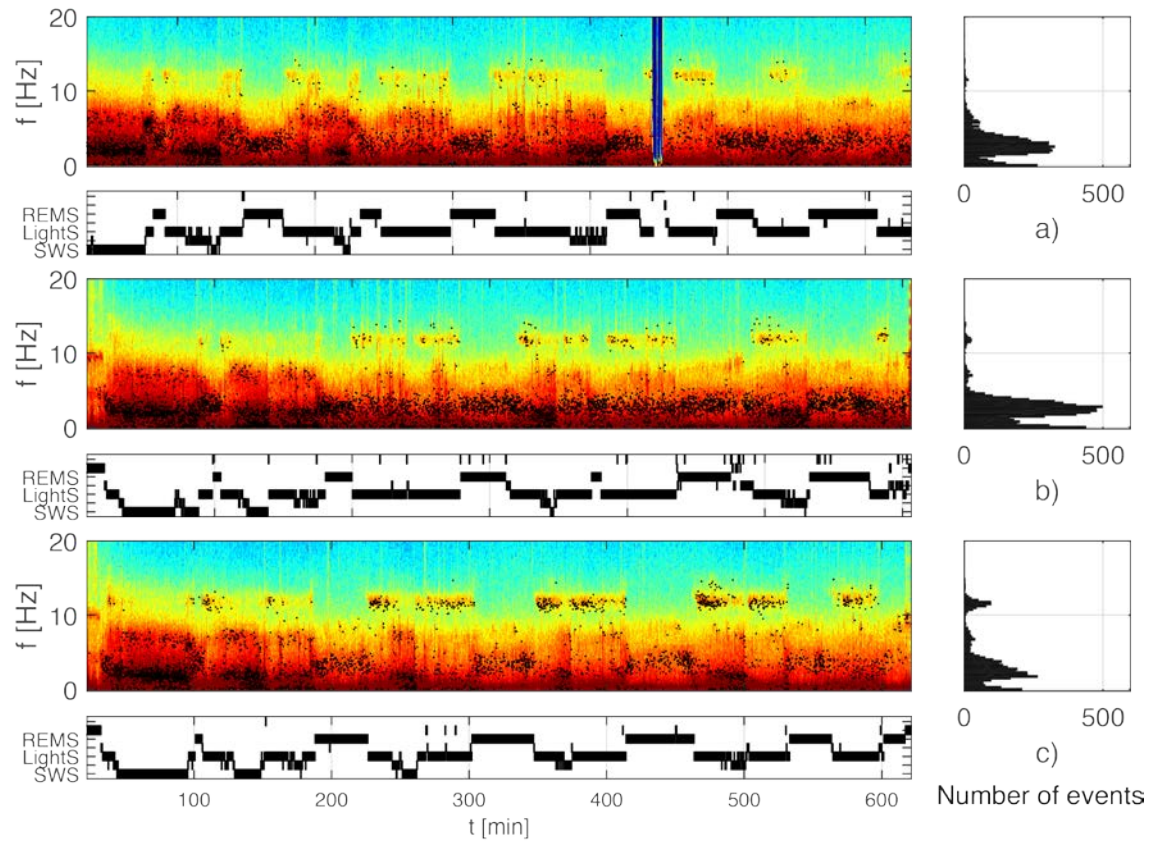


Figure S8: CHILD H

