

Supplementary material of the paper entitled. Only for reviewers.

Mesoscale spatiotemporal variability in a complex host-parasite system influenced by intermediate host body size

Sara M. Rodríguez^{1,2} & Nelson Valdivia^{2,3}

¹Programa de Doctorado en Biología Marina, Facultad de Ciencias, Universidad Austral de Chile, campus Isla Teja s/n, Valdivia, Chile.

²Instituto de Ciencias Marinas y Limnológicas, Facultad de Ciencias, Universidad Austral de Chile, campus Isla Teja s/n, Valdivia, Chile.

³Centro FONDAF de Investigación en Dinámica de Ecosistemas Marinos de Altas Latitudes (IDEAL).

Corresponding author:

Sara M. Rodríguez

Email addresses: saramrodriz@gmail.com

Prevalence vs. bird*size

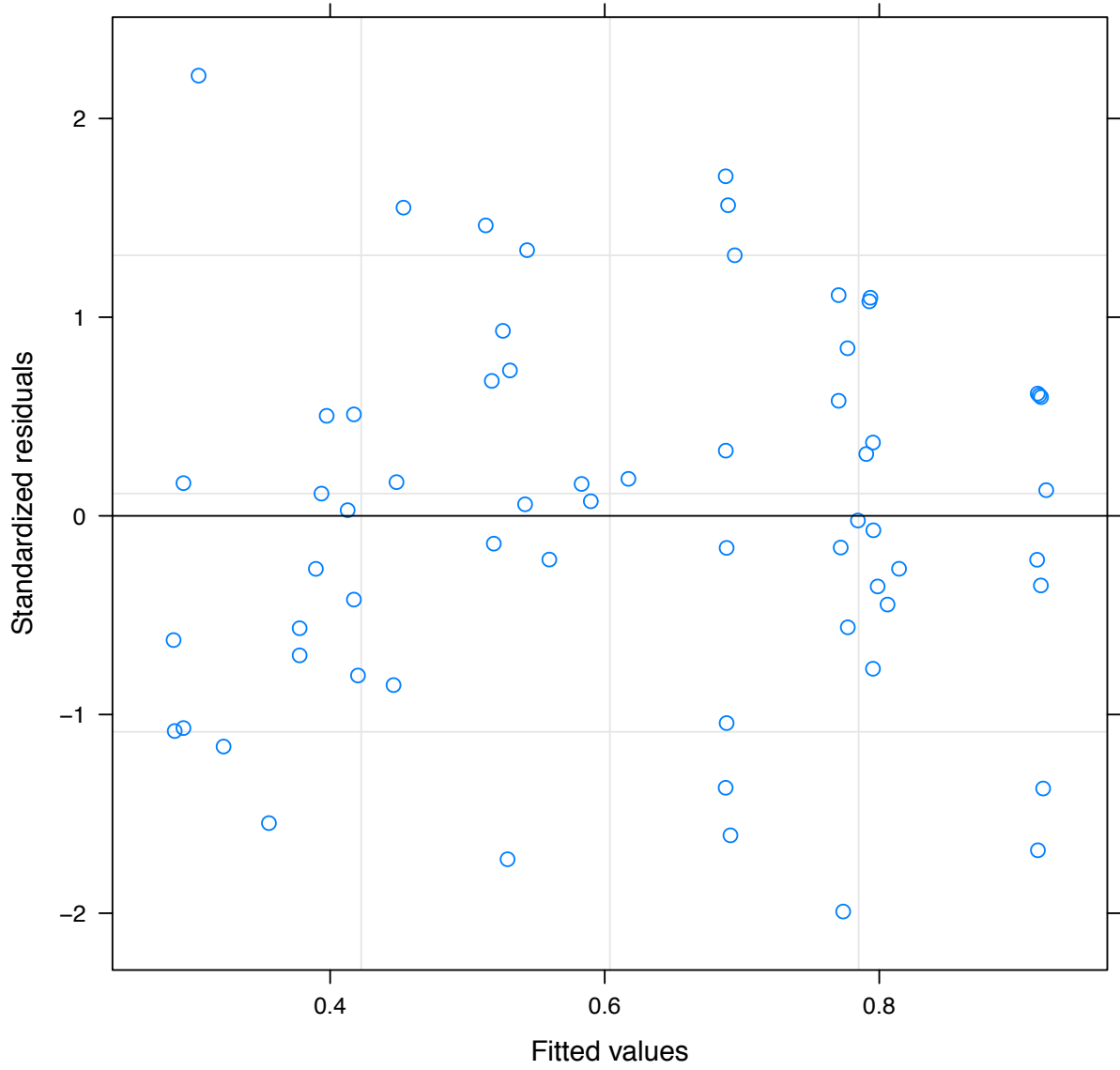


Fig. 1. Relationships between bird density and host size effects on prevalence of parasites.

Prevalence vs. bird*size

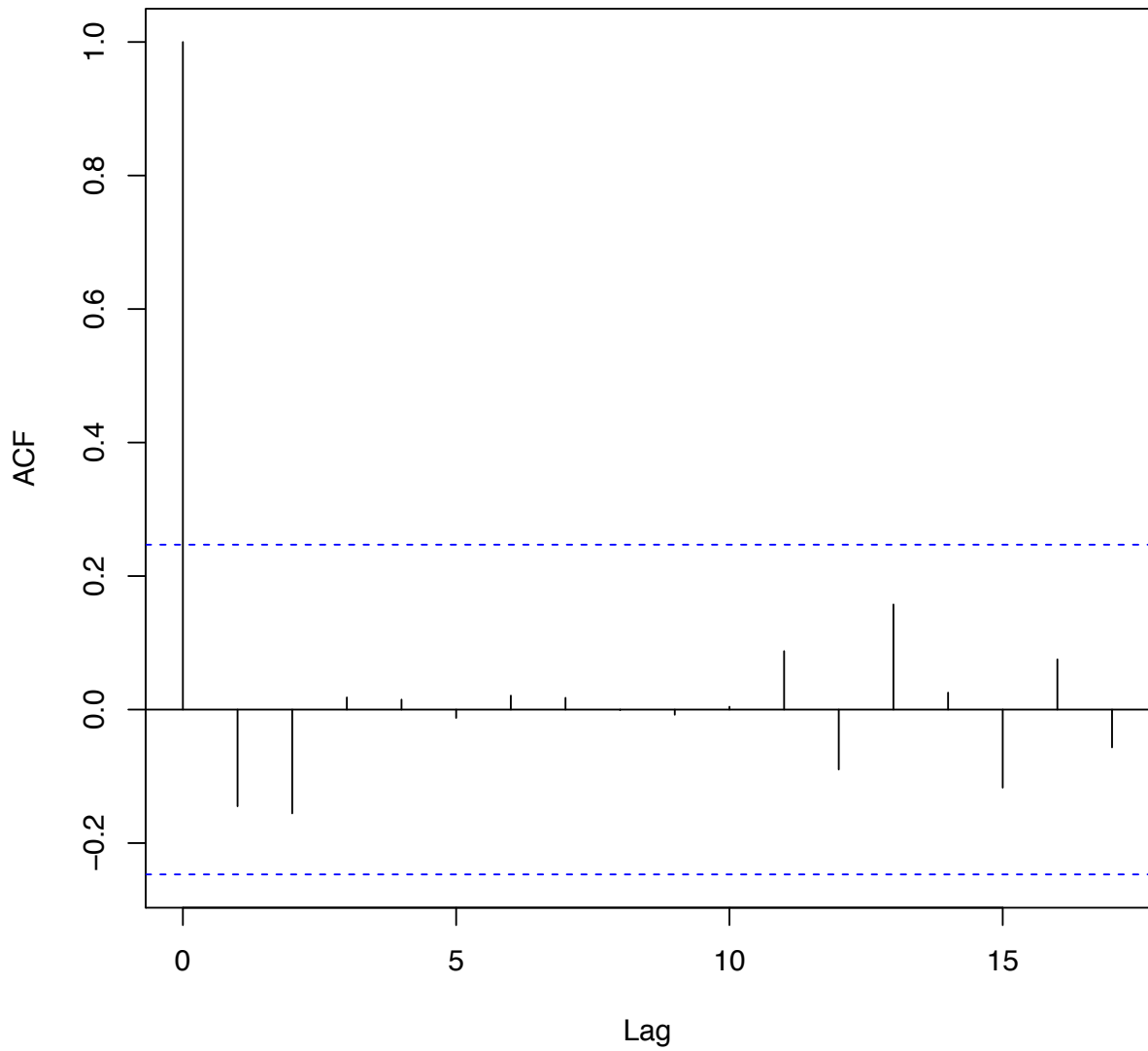


Fig. 2. Auto-correlation functions (ACF) between prevalence vs. bird density and host size across sites and over time.

variance-to-mean ratio vs. bird*size

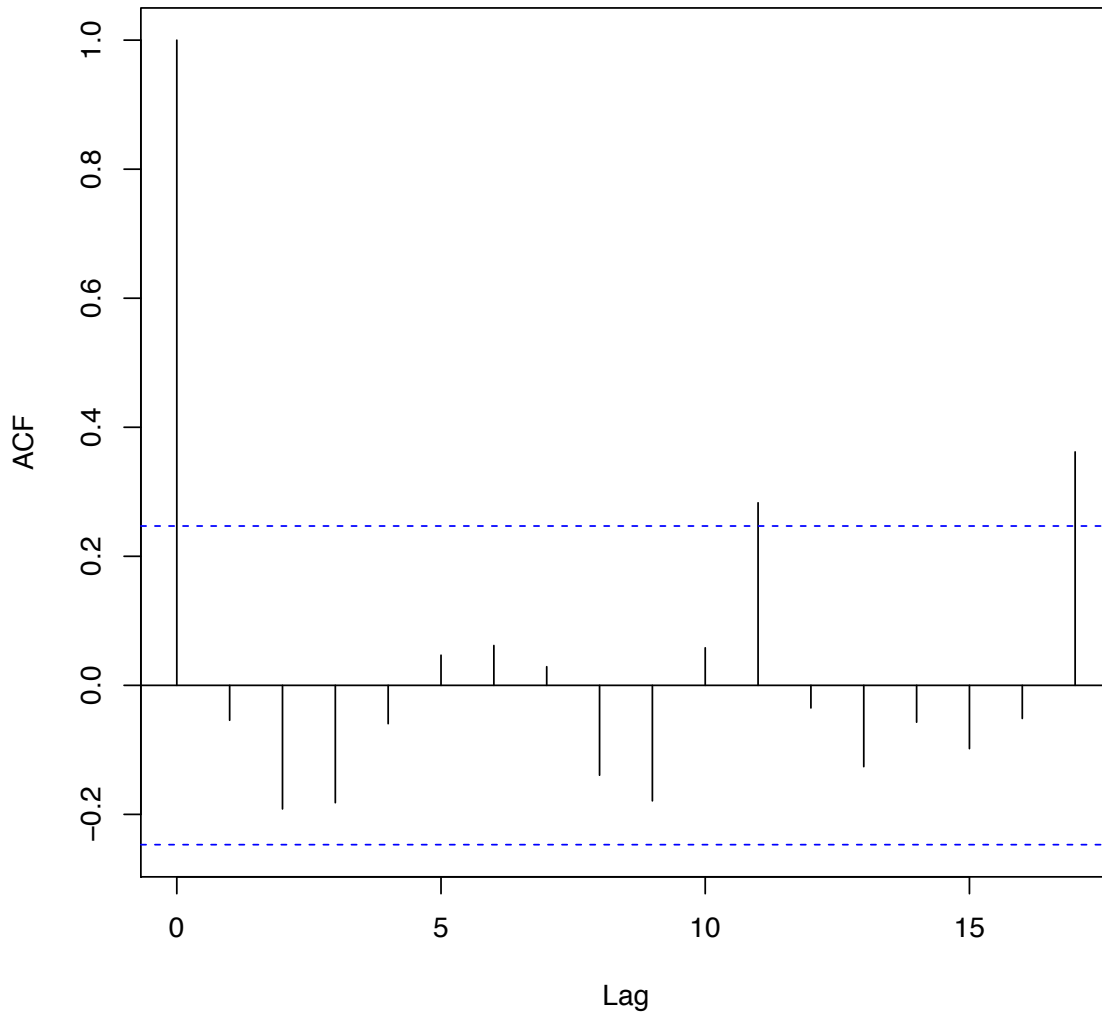


Fig. 3. Auto-correlation functions (ACF) between variance-to-mean-ratio vs. bird density and host size across sites and over time.