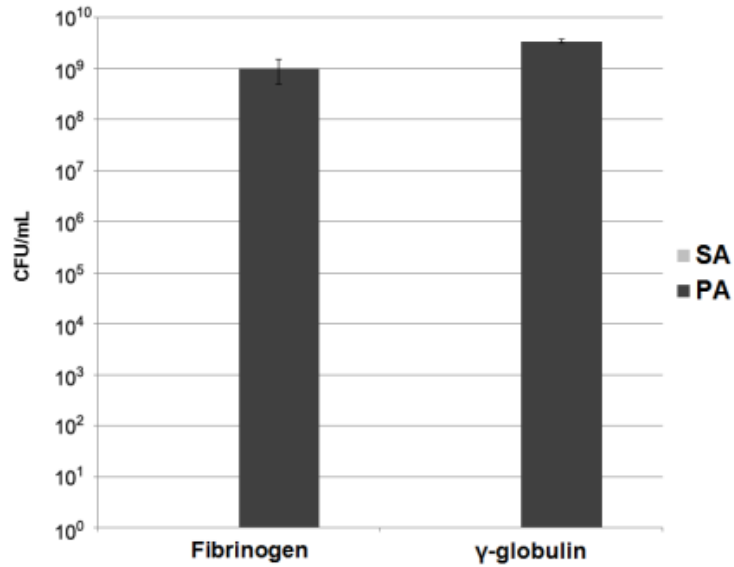
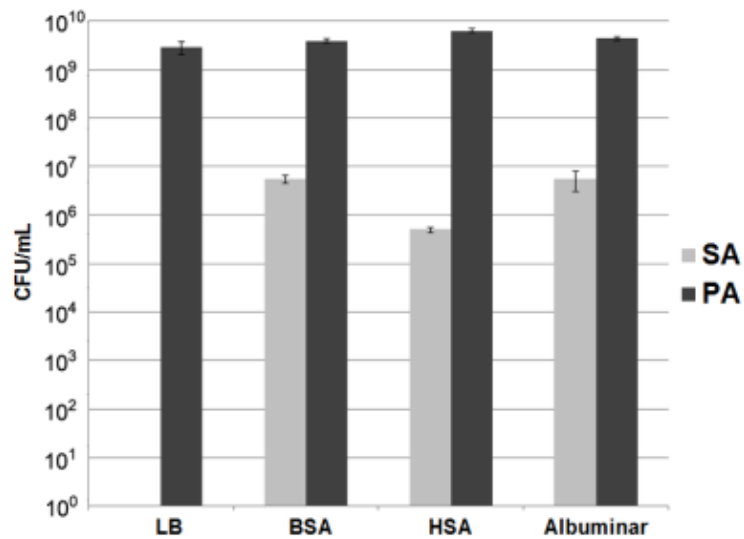


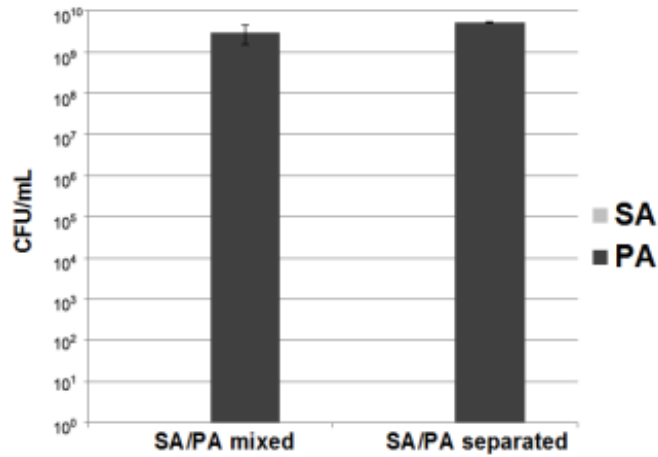
Supplemental Figure 1: SA is frequently eradicated from co-culture with PA. (A) Most PA strains were able to eradicate SA from co-culture. The indicated PA ‘wild-type’ laboratory strains and clinical isolates were co-cultured with SA31 overnight, after which the CFU/mL of each species was enumerated. (B) Most SA strains were eradicated from co-culture with PA. The indicated SA ‘wild-type’ laboratory strains and clinical isolates were co-cultured with PAO1 overnight, after which the CFU/mL of each species was enumerated. (C) PAO1 retained the ability to eradicate SA31 from overnight co-cultures in a variety of media types. Experiments were repeated at least 3 times, with at least 3 technical replicates.



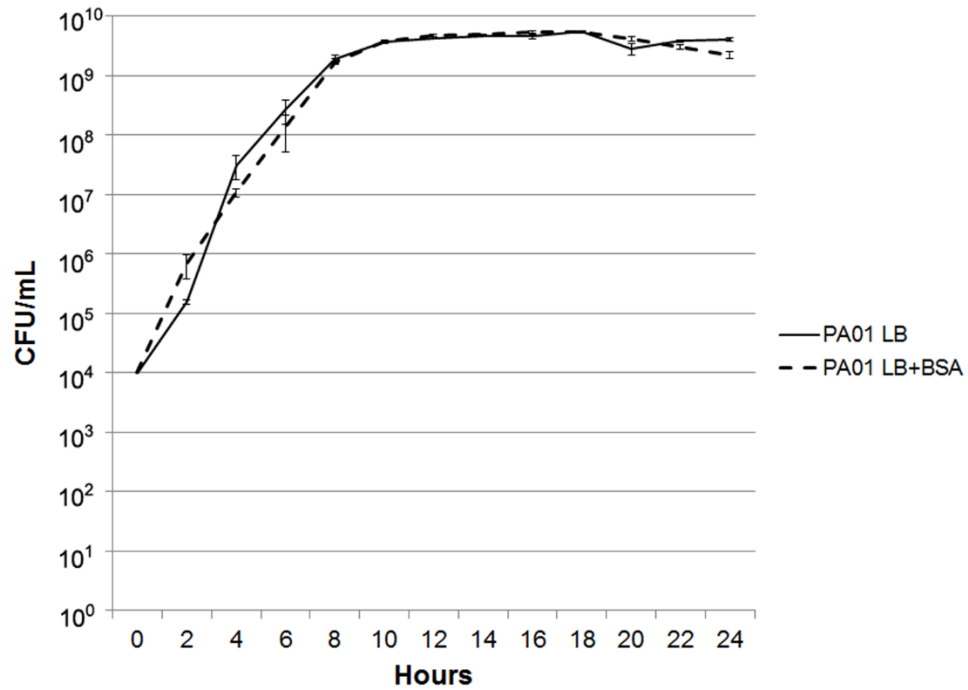
Supplemental Figure 2: Other serum proteins do not prevent PA from killing SA. LB was supplemented with 5% of the serum proteins fibrinogen or γ -globulins, inoculated with 10⁴ SA31:PAO1 (1:1), and grown overnight. Overnight cultures were then serially diluted and plated on *Pseudomonas* and *Staphylococcus* isolation agar to determine CFU/mL. No viable SA was detected. Experiments were repeated at least 3 times, with at least 3 technical replicates.



Supplemental Figure 3: SA was also rescued by human sources of albumin. LB was supplemented with 5% BSA or HSA or 25% Albuminar and inoculated with 10⁴ SA31:PAO1 (1:1). Overnight cultures were then serially diluted and plated on *Pseudomonas* isolation agar to obtain PA numbers and Mannitol salts medium to obtain SA numbers. Experiments were repeated at least 3 times, with at least 3 technical replicates.



Supplemental Figure.4: Cell-to-cell contact is not required for PA to kill SA. SA and PA were co-cultured overnight either together in both chambers of a transwell or separately, divided by a 0.4 μ M membrane. Samples were taken for serial dilution and plated *Pseudomonas* isolation agar to obtain PA numbers and Mannitol salts medium to obtain SA numbers. PA retained the ability to kill SA in both mixed co-culture and when separated from SA by a membrane, indicating that PA can kill SA independent of cell-to-cell contact. Experiments were repeated at least 3 times, with at least 3 technical replicates.



Supplemental Figure.5: The growth of PAO1 is not affected by albumin. PAO1 from an overnight culture was inoculated in to LB or LB supplemented with 5% BSA. Samples were then taken at the indicated time points, serially diluted and plated on *Pseudomonas* isolation agar to determine CFU/mL. Experiments were repeated at least 3 times, with at least 3 technical replicates.