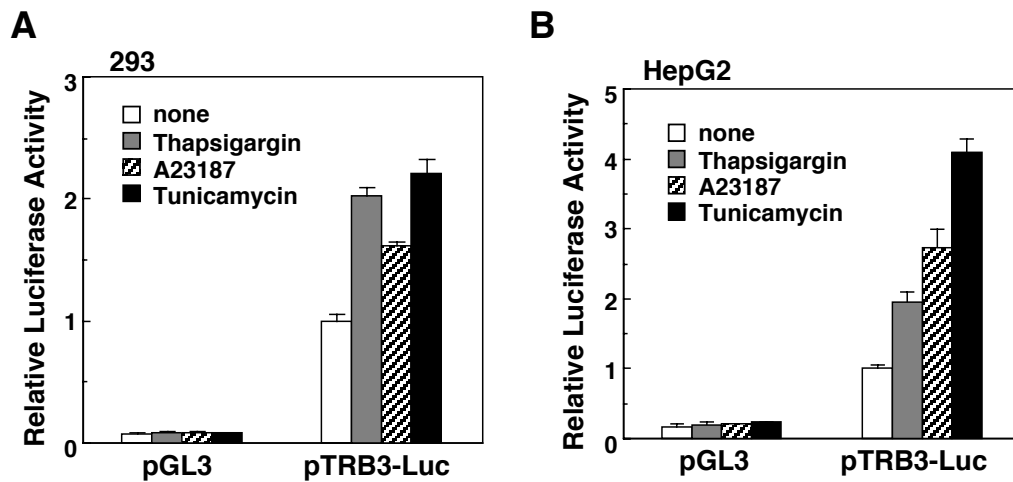


Supplementary Figure S5



***TRB3* promoter is activated by various ER stressors.**

293 cells (A) or HepG2 cells (B) were transiently transfected with pTRB3-Luc and pCMV- β -gal. After 24 hr, cells were treated with 2 μ M of Thapsigargin, 2 μ M of A23187 or 2 μ g/ml of Tunicamycin for 14hr. The luciferase activity in cell lysates was measured and normalized with β -galactosidase activity.