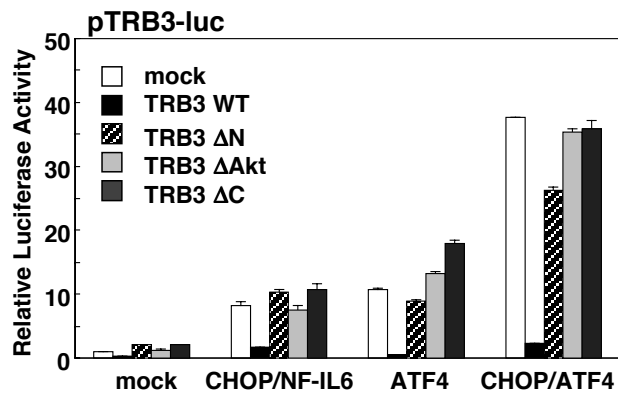


## Supplementary Figure S9



### **Full length of TRB3 is necessary to show the suppression of *TRB3* promoter by various treatments.**

293 cells were transiently transfected with expression vectors for wild type or deletion mutant of TRB3, pTRB3-Luc and pCMV- $\beta$ -gal combination with expression vectors for CHOP, NF-IL6 and ATF4 for 48hr. The luciferase activity in cell lysates was measured and was normalized with  $\beta$ -galactosidase activity.