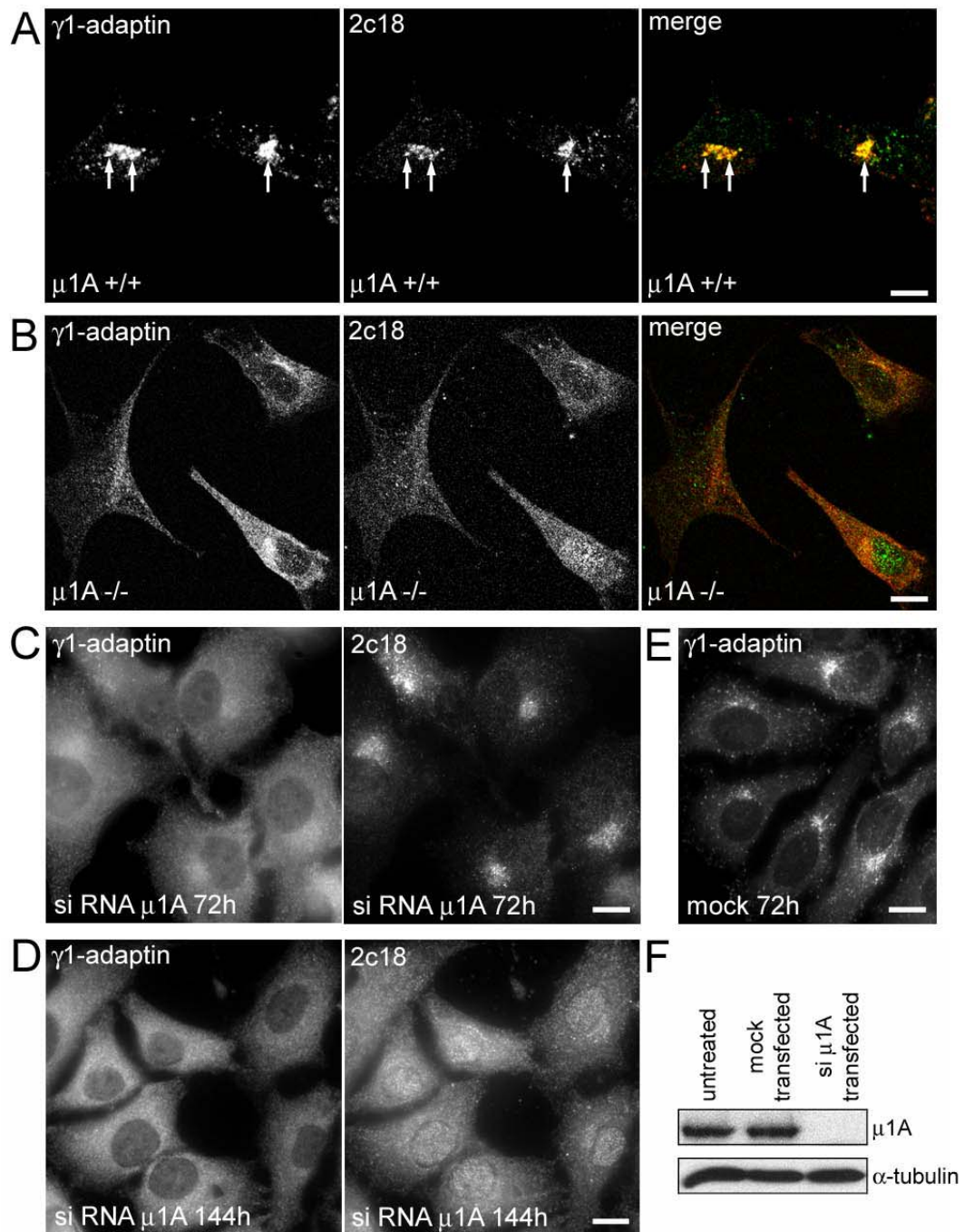


Sup_4.



Localization of 2c18 and γ 1-adaptin.

(A) and (B) Mouse fibroblast cells were immunostained for endogenous γ 1-adaptin (left panels) and 2c18 (middle panels). Co-localizing structures are marked by arrows.

(B) μ 1A-deficient mouse fibroblasts show that 2c18 loses its juxta-nuclear staining,

and similar to γ 1-adaptin appears more dispersed throughout the cytoplasm. (C) and (D) HeLa cells were treated with siRNA oligonucleotides against μ 1A-adaptin for 72 h (C) and for 144 h (D), then immunostained for γ 1-adaptin and 2c18, and show that 2c18 loses its juxta-nuclear staining under these conditions after γ 1-adaptin. (E) HeLa cells were mock transfected for 72 h, then immunostained for γ 1-adaptin. Bars represent 10 μ m. (F) Protein extracts from the cells in (D) were analyzed by SDS-PAGE and Western blotting.