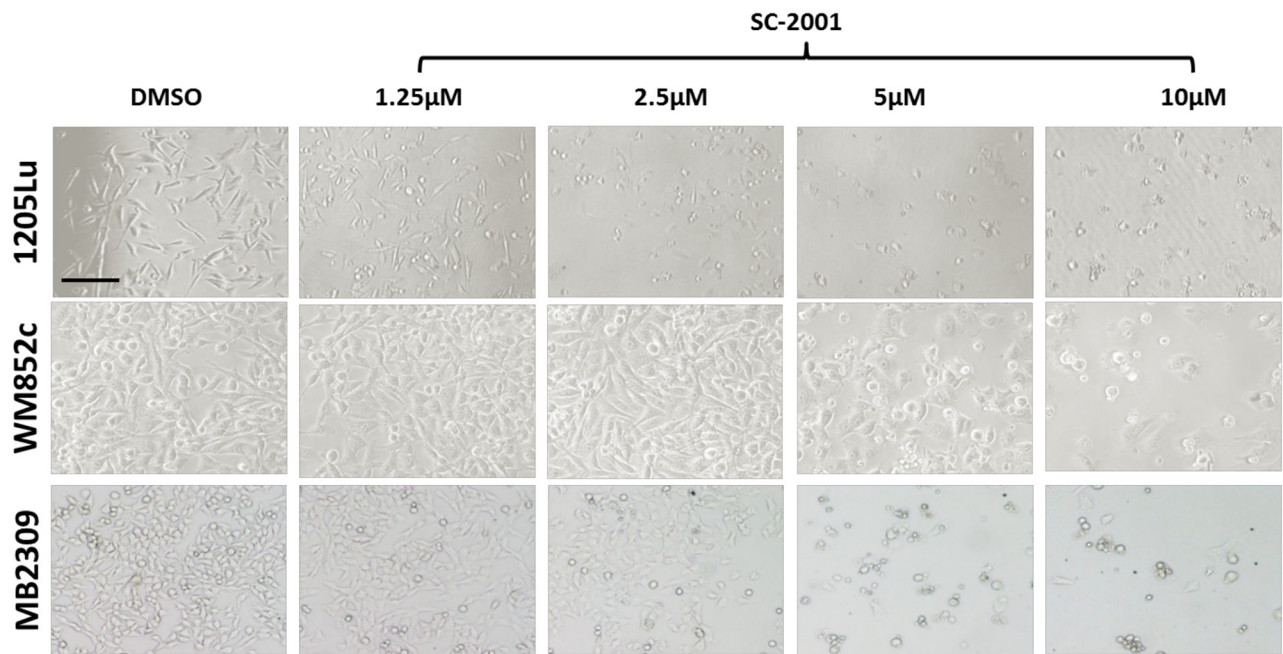
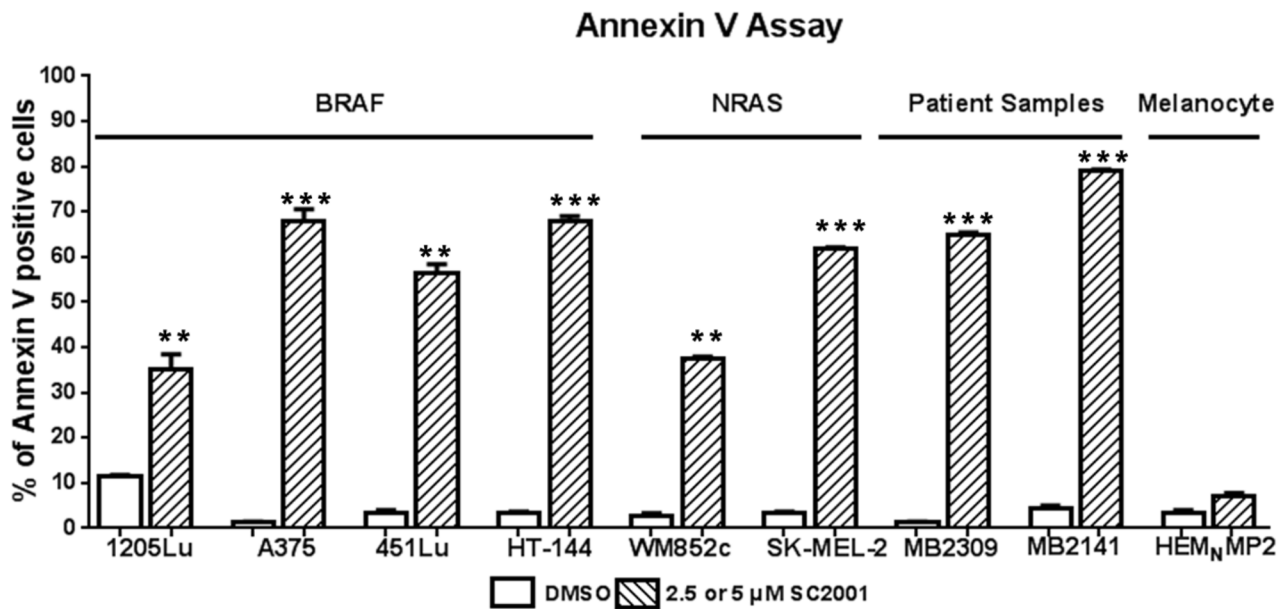


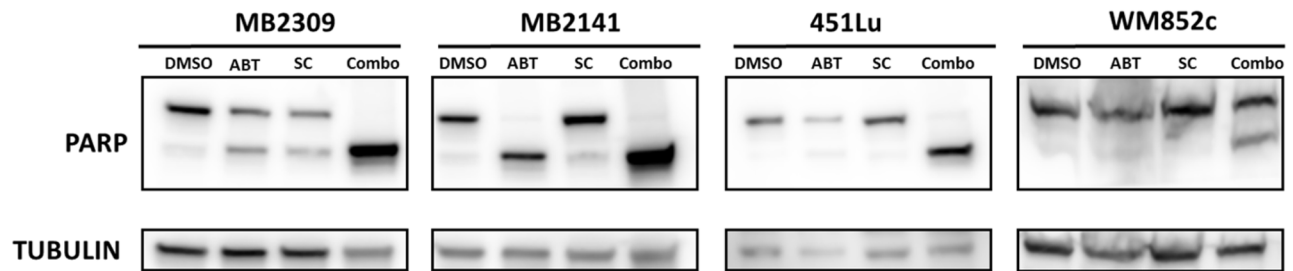
SUPPLEMENTARY FIGURES AND TABLES



Supplementary Figure S1: Bright-field images of melanoma cells treated with indicated dose of SC-2001 for 48 hrs. Scale bar = 100µm.



Supplementary Figure S2: The Annexin V assay shows massive apoptosis in melanoma cells induced by 48 hrs treatment of SC-2001. SC-2001 treatment significantly induced apoptosis compared to DMSO, (**P < 0.01; ***P < 0.001) in all melanoma cells tested (irrespective of the mutation status).



Supplementary Figure S3: Immunoblot of full length and cleaved PARP for sphere cell lysates treated with DMSO, ABT-737 (3.3µM), SC-2001 (2.5µM) or Combination for 48 hrs.

Supplementary Table S1: IC50 values for SC-2001

	IC50 (µM)
A375	3.52
1205Lu	4.61
HT144	2.14
WM852c	4.62
MB2309	4.12

Supplementary Table S2: Significance chart for Primary Sphere Assay

	DMSO vs. Combo	ABT-737 vs. Combo	SC-2001 vs. Combo
A375	***	***	**
451Lu	**	**	*
SKMEL-28	***	***	*
HT144	***	***	***
1205Lu	***	***	***
WM852c	***	***	**
MB2141	***	**	**
MB2309	**	**	***
MB1823	ns	ns	ns
MB1374	***	*	**
MB1860	***	***	**
MB1468	***	***	**
MB1920	***	***	***
PS4	***	***	***

***indicates $P < 0.001$ or less; **indicates $P < 0.01$; *indicates $P < 0.05$

Supplementary Table S3: Significance chart for ALDH assay

	DMSO vs. Combo	ABT-737 vs. Combo
A375	***	*
451Lu	**	ns
SKMEL-28	***	**
HT144	*	*
1205Lu	**	*
WM852c	*	**
MB2141	***	***
MB2309	***	***

***indicates P<0.001 or less; **indicates P<0.01; *indicates P<0.05

Unfortunately, we did not have enough material to do additional replicates for last four samples of Figure 4C, so we could not statistically analyze the data

Supplementary Table S4: Significance chart for Secondary Sphere Assay

	DMSO vs. Combo	ABT-737 vs. Combo	SC2001 vs. Combo
A375	***	**	*
451Lu	***	***	***
SKMEL-28	***	***	*
HT144	*	*	*
1205Lu	***	***	***
WM852c	***	***	***
MB2141	***	***	***
MB2309	***	***	***
MB1374	ns	ns	ns

***indicates P<0.001 or less; **indicates P<0.01; *indicates P<0.05