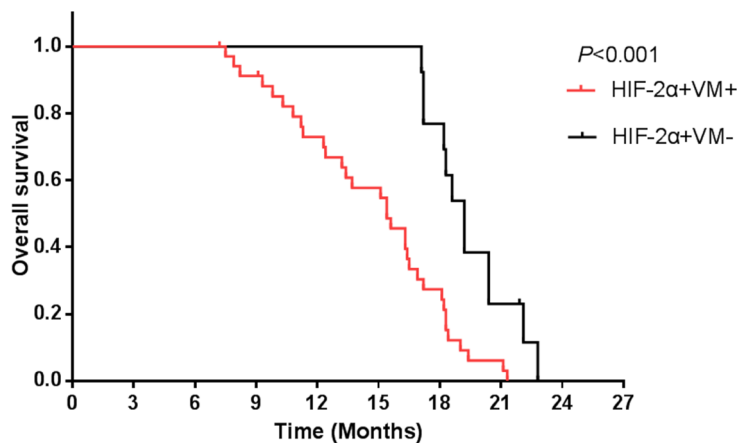


HIF-2 α promotes the formation of vasculogenic mimicry in pancreatic cancer by regulating the binding of Twist1 to the VE-cadherin promoter

SUPPLEMENTARY MATERIALS



Supplementary Figure 1: Survival curves of HIF-2 α +VM+ group and HIF-2 α +VM- group in pancreatic cancer patients (log-rank test, $P < 0.05$).