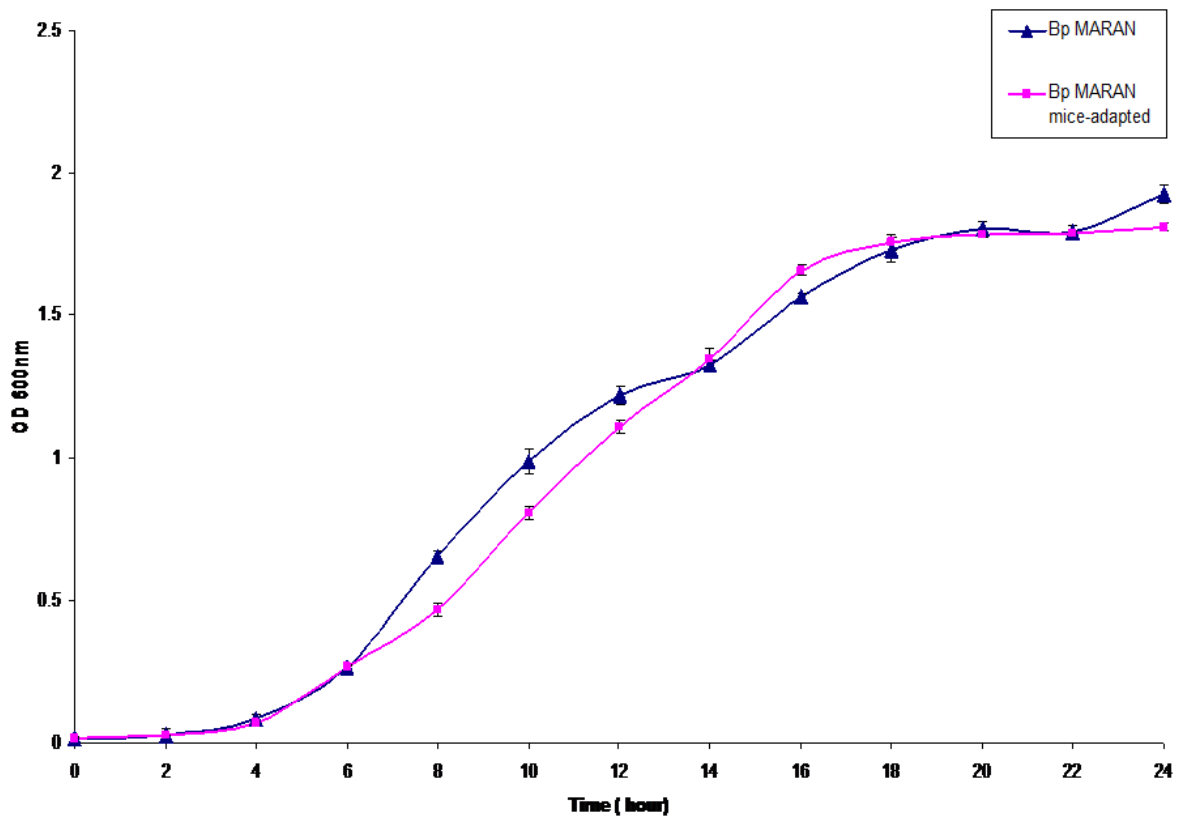


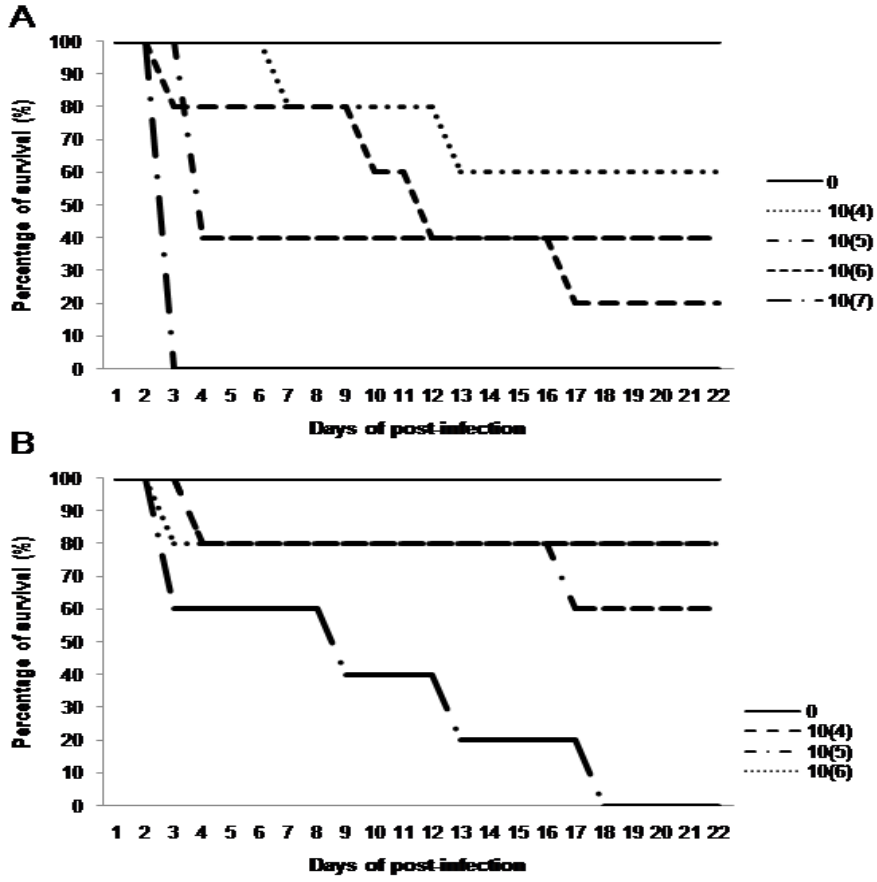
Host-Adaptation of *Burkholderia pseudomallei* Alters Metabolism and Virulence: a Global Proteome Analysis

Vanitha Mariappan¹, Kumutha Malar Vellasamy¹, Jamuna Vadivelu^{1*}

¹Department of Medical Microbiology, Tropical Infectious Diseases Research and Education Centre (TIDREC), Faculty of Medicine, University of Malaya, 50603 Kuala Lumpur, Malaysia



Supplementary Figure 1. Growth curve of Bp_{MARAN} and Bp_{mouse-adapted}. The culture was inoculated in LB medium and grown at 37°C from 0 h to 24 h. It was harvested at every 2 h intervals and the bacterial density was determined at OD_{600nm}. The experiment was conducted in three independent replicates (the error bars indicate the standard deviation).



Supplementary Figure 2. LD₅₀ of (A) Bp_{MARAN} and (B) Bp_{mouse}-adapted.

Table S1: List of primers used for gene expression

| Gene | Primer ((5'-3') | |
|--------------------------------------|------------------------|------------------------|
| catalase-peroxidase | F | aagcgaagtgcccggtccat |
| | R | gtagttgaaatccttgcca |
| hsp 20 | F | gaagatcgacgtgaccgaaa |
| | R | gccttccttcagttcctgt |
| hypothetical protein BPSS1107 | F | gacaagcagaccggcgtgat |
| | R | caggctgatctgttcgtagtcg |
| hypothetical protein BPSL1958 | F | cgctcgcgacatcgaaccag |
| | R | ccgacaacctatgccacgtt |
| chaperonin GroEL | F | cagttcgaccgcggtacctgtc |
| | R | aggtcgcggatgttcgacacct |
| elongation factor Tu | F | gggcgtggaaatgtccgcaagc |
| | R | accggcttcgccagaacctg |
| extracellular ligand binding protein | F | acgaactacaccggcgtgat |
| | R | ttacatcgtcacctgatcgagg |
| outer membrane protein | F | aatacgttgtcggcgctgaa |
| | R | gcatggttgaagtggactgc |