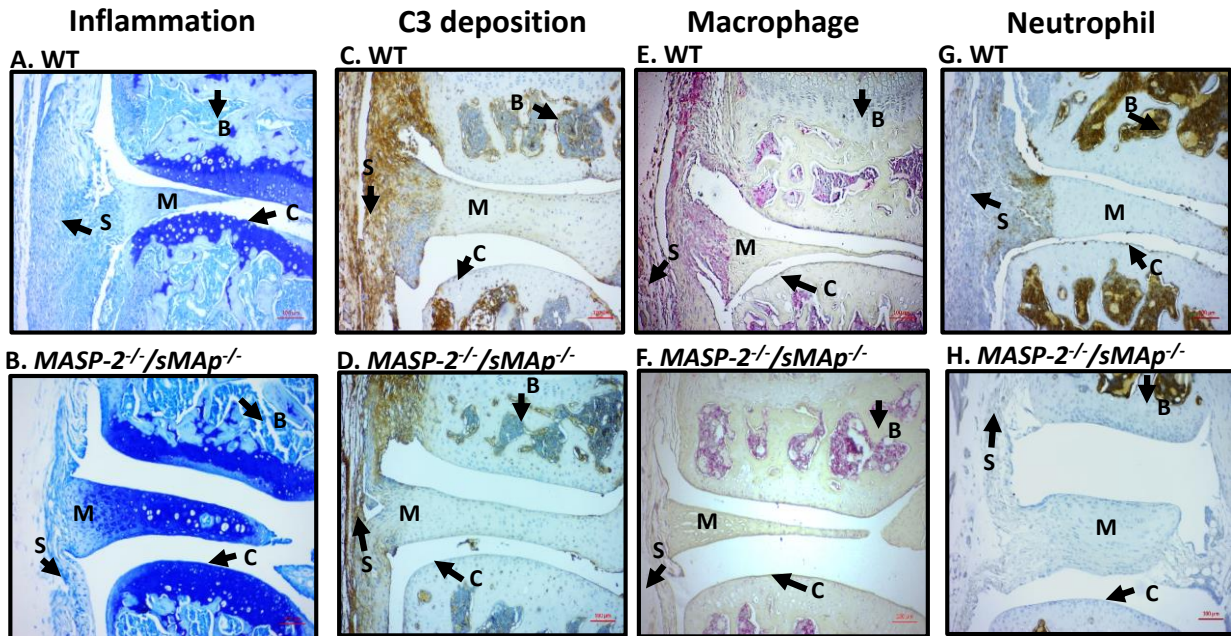


Supplemental Figure 1. Representative images of the knee joint inflammation (histopathology), C3 deposition, macrophage and neutrophil from the knee joints of WT and *FCN B^{-/-}* mice with CAIA. All joints were fixed in a 10% neutral buffered formalin, paraffin embedded, and sectioned at a thickness of 5 μ m. The top first four panels from left to right (**A**, **C**, **E**, & **G**) show staining with T-blue (toluidine-blue) (first left most panel) (blue color) from the knee joints of WT mice with CAIA or C3 deposition by anti-C3 Ab (second panel) (brown color) or macrophage by F4/80 (third panel) (red color) or neutrophil (last right most panel) (brown color). The second set of four panels from left to right (**B**, **C**, **F** & **H**) show staining T-blue (second left most panel) (blue color) from the knee joints of *FCN B^{-/-}* mice with CAIA or C3 deposition by anti-C3 Ab (second panel) (dark brown color) or macrophage with F4/80 (third panel) (red color) or neutrophil (last right most panel) (brown color). Specific areas of synovium (S-black arrow), cartilage (C-black arrow), bone (B-black arrow) and meniscus (M) are identified. The knee joint sections stained for C3 deposition, macrophage and neutrophil were counterstained with hematoxylin & eosin (H & E) and photographed under the 10x objective using Zeiss Observer. D1 (AXIO) microscope. Red scale bar shown at the bottom right hand corner in images from **A-H** equals 0.1 mm (100 μ m).



Supplement figure 2. Representative images of the knee joints inflammation (histopathology), C3 deposition, macrophage and neutrophil presence in WT and *MASP-2*^{-/-}/*sMAP*^{-/-} mice with CAIA. All joints were fixed in a 10% neutral buffered formalin, paraffin embedded, and sectioned at a thickness of 5 μ m followed by specific staining. The top set of four panels from left to right (**A, C, E & G**) show staining with T blue (blue color) from the knee joints of WT mice with CAIA (first left most panel) or C3 deposition by anti-C3 Ab (second panel) (brown color) or macrophage by F4/80 (third panel) (red color) or neutrophil (last right most panel) (brown color). The bottom set of four panels from left to right (**B, D, F & H**) show staining with T blue (blue color) from the knee joints of *MASP-2*^{-/-}/*sMAP*^{-/-} mice with CAIA (first left most panel) or C3 deposition by anti-C3 Ab (second panel) (brown color) or macrophage by F4/80 (third panel) (red color) or neutrophil (last right most panel) (brown color). Specific areas of synovium (S-black arrow), cartilage (C-black arrow), bone (B-black arrow) and meniscus (M) are identified. The knee joint sections stained for C3 deposition, macrophage and neutrophil were counterstained with hematoxylin & eosin (H & E) and photographed under the 10x objective using Zeiss Observer. D1 (AXIO) microscope. Red scale bar shown at the bottom right hand corner in images from **A-H** equals 0.1 mm (100 μ m).