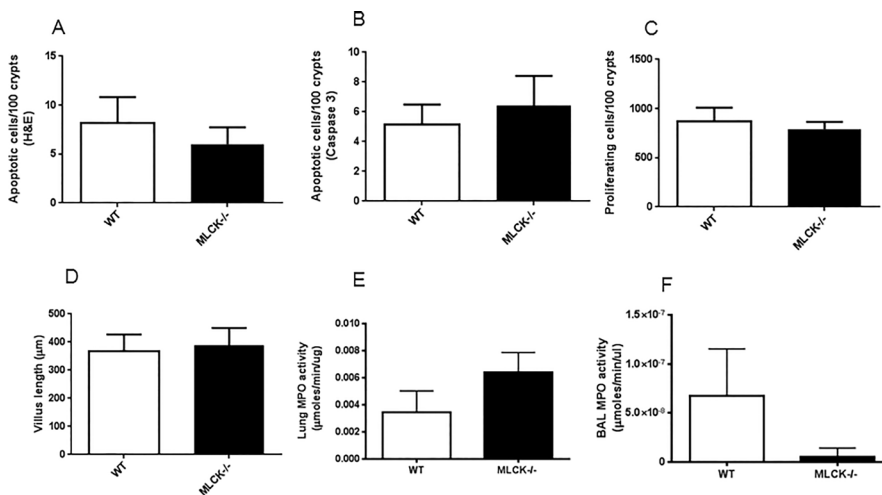


Supplemental Data

Myosin Light Chain Kinase Knockout Improves Gut Barrier Function and Confers a Survival Advantage in Polymicrobial Sepsis

C Adam Lorentz,<sup>1\*</sup> Zhe Liang,<sup>2\*</sup> Mei Meng,<sup>3</sup> Ching-Wen Chen,<sup>2</sup> Benyam P Yoseph,<sup>2</sup> Elise R Breed,<sup>2</sup> Rohit Mittal,<sup>2</sup> Nathan J Klingensmith,<sup>2</sup> Alton B Farris,<sup>4</sup> Eileen M Burd,<sup>4</sup> Michael Koval,<sup>5</sup> Mandy L Ford,<sup>6</sup> and Craig M Coopersmith<sup>2</sup>

Online address: <http://www.molmed.org>



**Supplementary Figure S1.** Effect of genetic deletion of MLCK on unmanipulated mice. No statistically significant differences were seen between WT and MLCK<sup>-/-</sup> mice in gut epithelial apoptosis by (A) H&E ( $p = 0.10$ ) or (B) active caspase 3 ( $p = 0.18$ ), (C) crypt proliferation ( $p = 0.19$ ), (D) villus length ( $p = 0.52$ ), (E) lung MPO ( $p = 0.20$ ) or (F) BAL MPO ( $p = 0.22$ ).  $N = 7$ /group for all experiments.