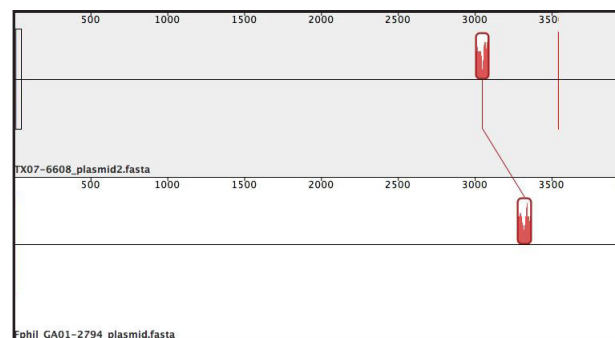
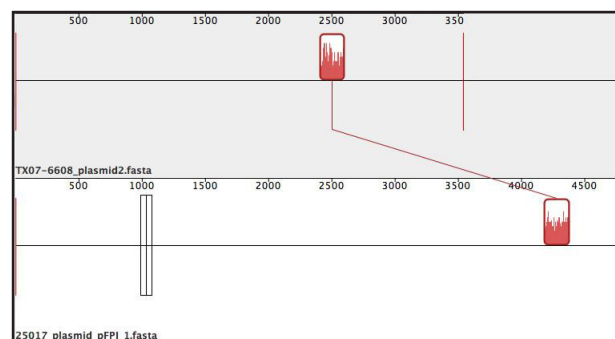
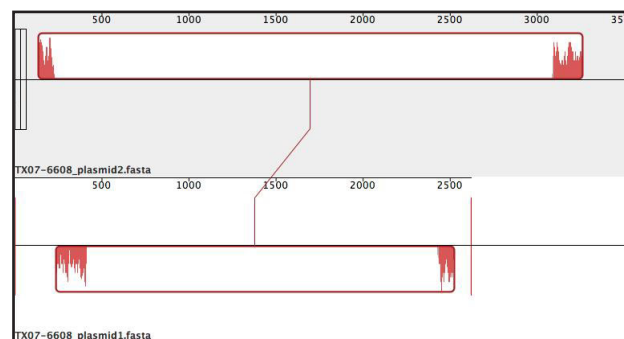
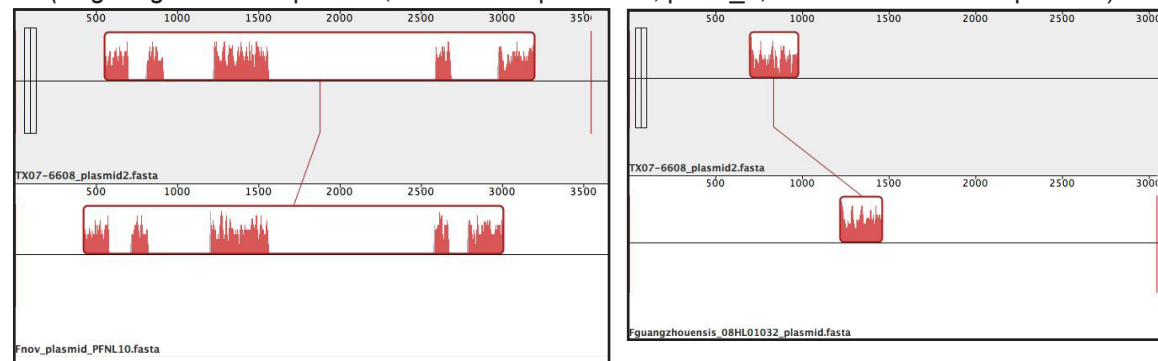
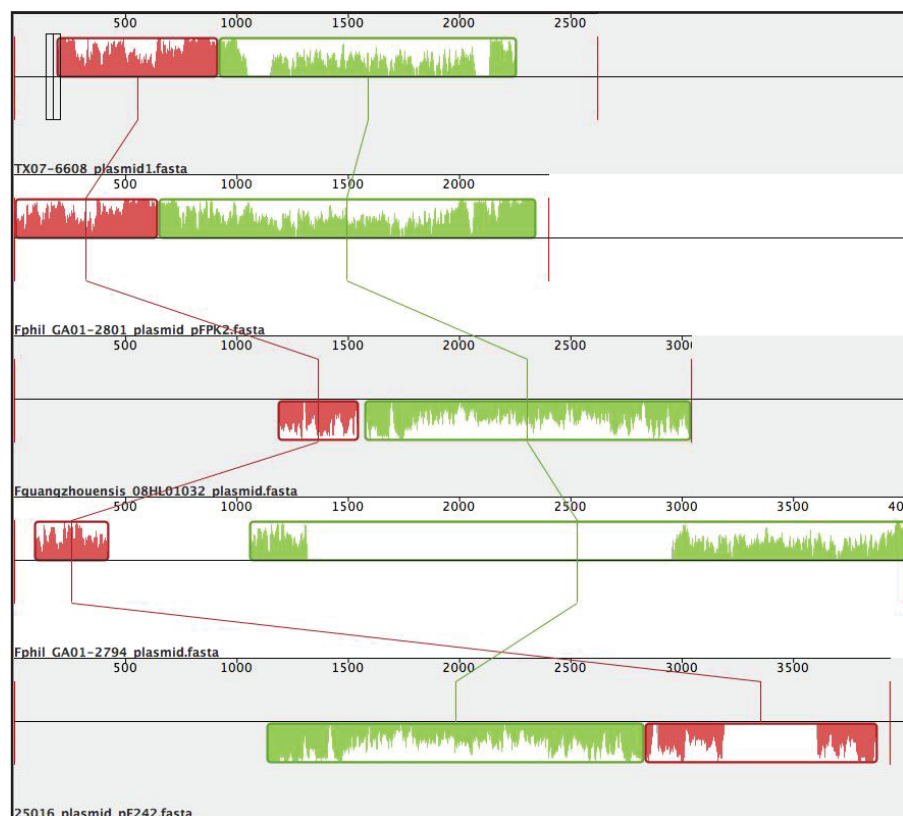


Figure S1. Progressive Mauve nucleotide sequence alignments of *F. novicida*-like strain TX07-6608 plasmids 1 and 2, and the plasmid from *Francisella* sp. MA06-7296 with the other *Francisella* plasmids that were most similar. Regions of similarity in the comparisons are shown in green and red.

A. TX07-6608 plasmid 1 was most similar to *F. philomiragia* plasmids pFPK_2, pF242, the GA01-2794 plasmid and the plasmid from *A. guangzhouensis*.

B. TX07-6608 plasmid 2 was most similar to pFNL10 from *F. novicida*-like strain F6168, and had smaller regions in common with other *Francisella* plasmids (A. *guangzhouensis* plasmid, TX07-6608 plasmid 1, pFPJ_1, and the GA01-2794 plasmid).



C. The plasmid from MA06-7296 had one small region of nucleotide sequence similarity to *F. philomiragia* plasmid pFPK_1.

