

**Association between genetic polymorphisms in the autophagy-related 5 gene promoter  
and the risk of sepsis**

**Author:**

Yiming Shao<sup>1#</sup>, Feng Chen<sup>1#</sup>, Yuhua Chen<sup>3#</sup>, Wenying Zhang<sup>1</sup>, Yao Lin<sup>4</sup>, Yujie Cai<sup>2</sup>, Zihan Yin<sup>1</sup>, Shoubao Tao<sup>1</sup>, Qinghui Liao<sup>3</sup>, Jianghao Zhao<sup>2</sup>, Hui Mai<sup>2</sup>, Yanfang He<sup>2</sup>, Junbing He<sup>1\*</sup>, Lili Cui<sup>2\*</sup>

**Author details:**

<sup>1</sup>The Intensive Care Unit, Guangdong Key Laboratory of Age-Related Cardiac and Cerebral Diseases, Affiliated Hospital of Guangdong Medical University, Zhanjiang, Guangdong, PR China

<sup>2</sup>Institute of Neurology, Guangdong Key Laboratory of Age-Related Cardiac and Cerebral Diseases, Affiliated Hospital of Guangdong Medical University, Zhanjiang, Guangdong, PR China

<sup>3</sup>The Department of Endocrinology and Metabolism, Longgang District People's Hospital of Shenzhen, Shenzhen, Guangdong, PR China

<sup>4</sup>The Department of Stomatology, Guangdong Key Laboratory of Age-Related Cardiac and Cerebral Diseases, Affiliated Hospital of Guangdong Medical University, Zhanjiang, Guangdong, PR China

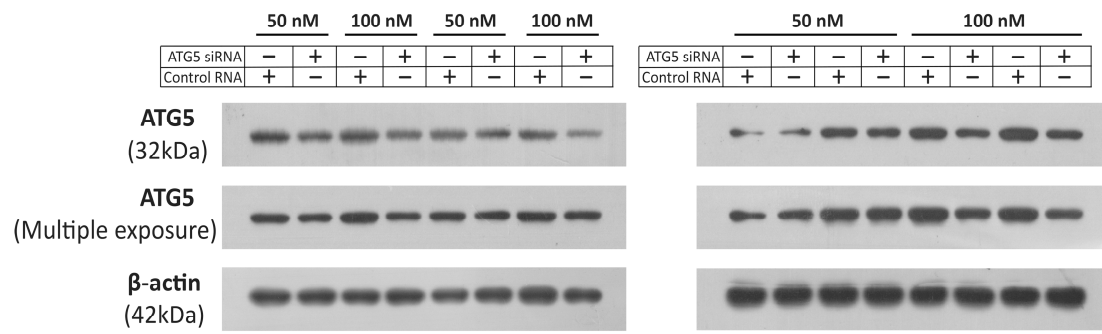
<sup>#</sup>These authors contributed equally to this work.

\*Correspondence: junbinghe\_gmc@163.com; cuilili@gdmu.edu.cn

<sup>1</sup>The Intensive Care Unit, Guangdong Key Laboratory of Age-Related Cardiac and Cerebral Diseases, Affiliated Hospital of Guangdong Medical University, Zhanjiang, Guangdong, PR China

<sup>2</sup>Institute of Neurology, Guangdong Key Laboratory of Age-Related Cardiac and Cerebral Diseases, Affiliated Hospital of Guangdong Medical University, Renmin street south 57, Xiashan district, Zhanjiang City 524001, Guangdong Province, PR China

## Supplementary Figure S1



**Supplementary Figure S1. The full-length and multiple exposed blots/gels.** Western blotting of ATG5 in THP-1 cells transfected with ATG5 siRNA or control siRNA for 72 h.