

Figure S1

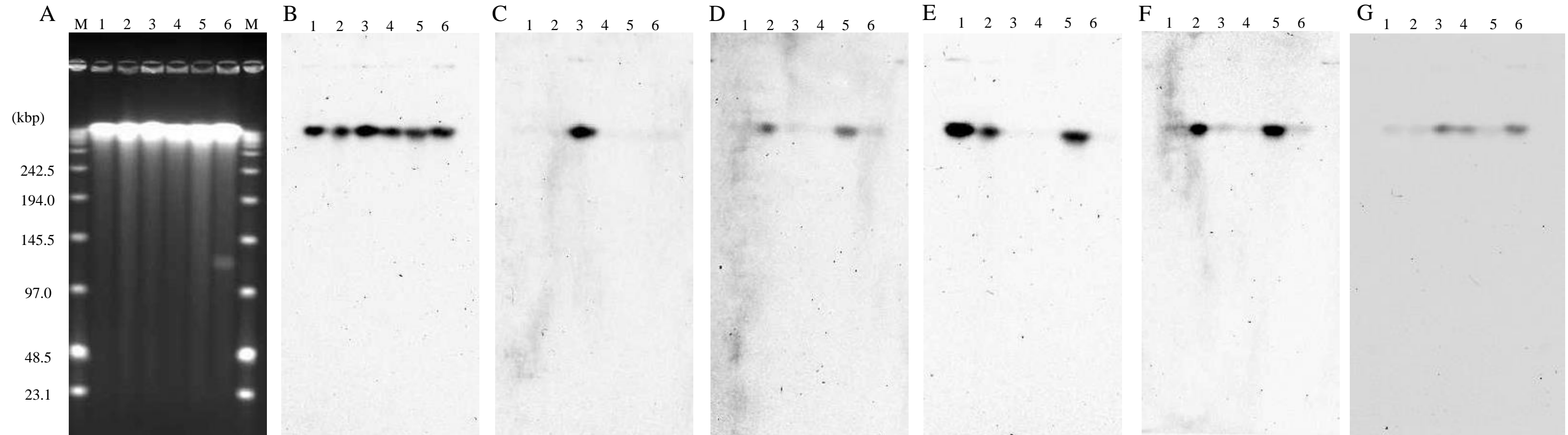


FIG. S1. Southern blot analysis with probes for genes encoding carbapenemases and 16S rRNA methyltransferases. Lane M, Low Range PFG Marker (New England Biolabs); Lane 1, IOMTU3; Lane 2, IOMTU9; Lane 3, IOMTU133; Lane 4, IOMTU184; Lane 5, IOMTU304; and Lane 6, IOMTU487. A, Pulsed-field gel electrophoresis patterns of S1 Nuclease-digested chromosomal DNAs stained with ethidium bromide; B, Southern hybridization with *P. aeruginosa* 16S rRNA probe; C, Southern hybridization with *bla*_{DIM-1} probe; D, Southern hybridization with *bla*_{NDM-1} probe; E, Southern hybridization with *bla*_{VIM-1} probe; F, Southern hybridization with *rmtB* probe; G, Southern hybridization with *rmtF* probe.

Figure S2

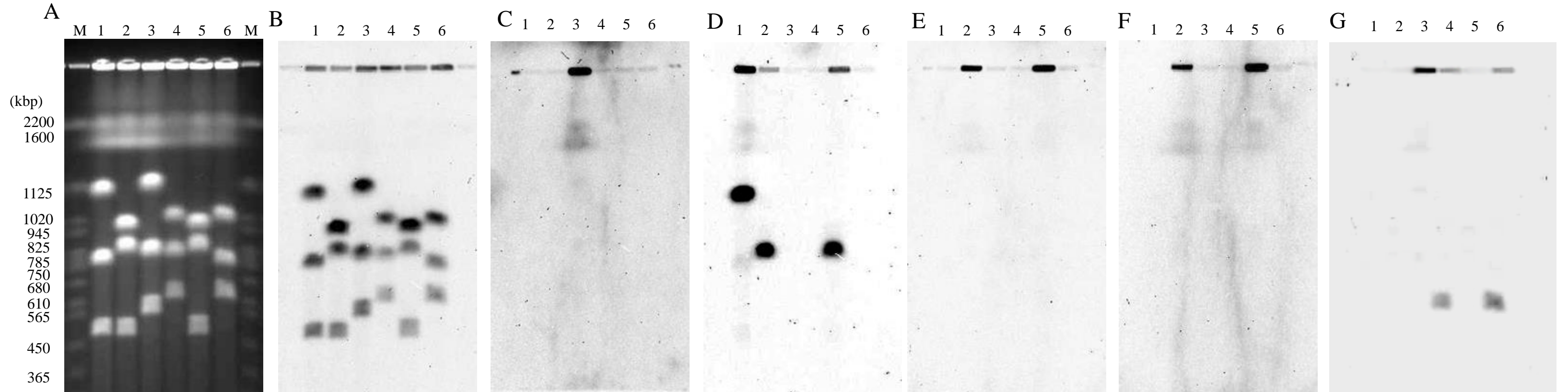


FIG. S2. Southern blot analysis with probes for genes encoding carbapenemases and 16S rRNA methyltransferases. Lane M, DNA size marker *Saccharomyces cerevisiae* (New England Biolabs); Lane 1, IOMTU3; Lane 2, IOMTU9; Lane 3, IOMTU133; Lane 4, IOMTU184; Lane 5, IOMTU304; and Lane 6, IOMTU487. A, Pulsed-field gel electrophoresis patterns of I-CeuI-digested chromosomal DNAs stained with ethidium bromide; B, Southern hybridization with *P. aeruginosa* 16S rRNA probe; C, Southern hybridization with *bla*_{DIM-1} probe; D, Southern hybridization with *bla*_{NDM-1} probe; E, Southern hybridization with *bla*_{VIM-1} probe; F, Southern hybridization with *rmtB* probe; G, Southern hybridization with *rmtF* probe.