

SUPPLEMENTARY DATA

Increased levels of Gab1 and Gab2 adaptor proteins skew IL-4 signaling toward M2
macrophage-driven pulmonary fibrosis in mice

**Xiaohong Guo, Tingting Li, Yun Xu, Xiayan Xu, Zhengyi Zhu, Yun Zhang, Jiaqi Xu,
Kaihong Xu, Hongqiang Cheng, Xue Zhang, Yuehai Ke**

Figure S1

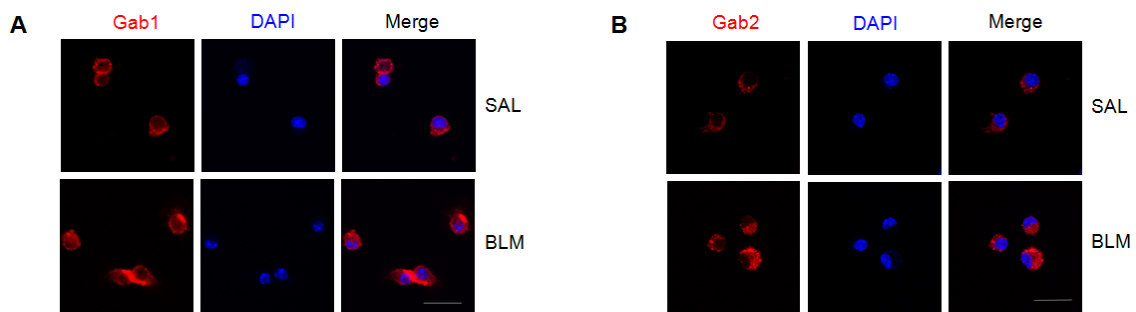


Figure S1

Figure S1. Elevated levels of Gab1/2 in alveolar macrophages isolated from fibrotic mice
(A-B) Alveolar macrophages obtained from SAL- or BLM-treated mice (n=3/group) were stained with Gab1 (red, A) or Gab2 (red, B). Nuclei were counterstained with DAPI (blue). Scale bars, 20 μ m. Data from three independent experiments are shown.