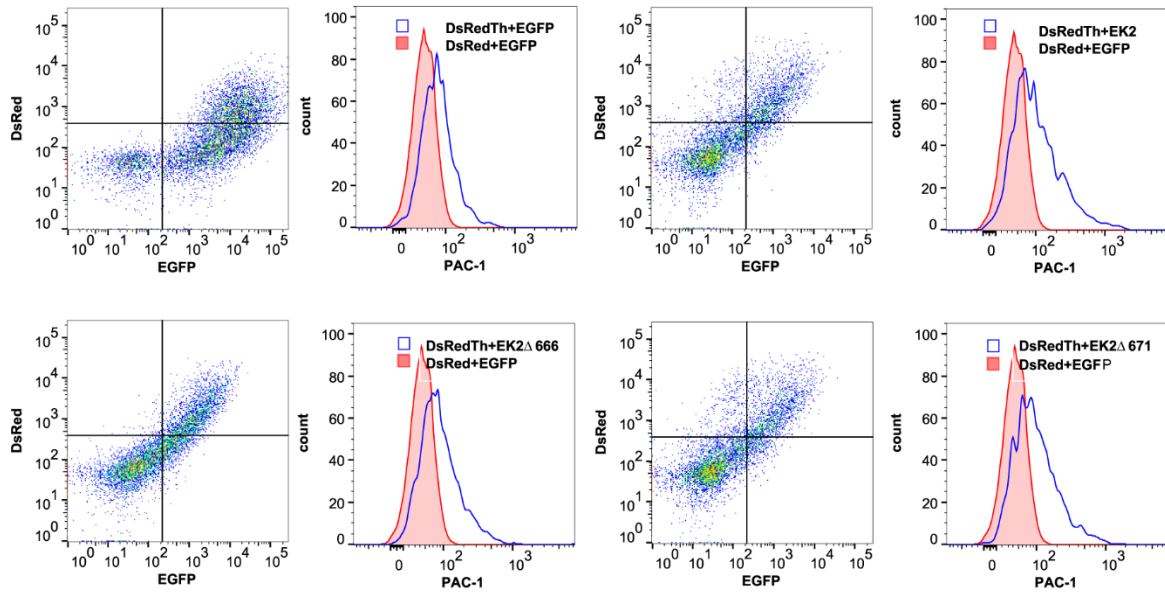


FIGURE S1. Integrin activation was measured using PAC-1 binding to α IIb β 3-CHO cells transiently expressing DsRed-fused talin-H and EGFP-fused K2 or its mutants and analyzed by flow cytometry. Each dot plot and resulting histogram is shown as a set of two panels for each construct. In each dot plot, the upper right quadrant is the cell population double-positive for DsRed and EGFP. Each histogram displays the PAC-1 binding to α IIb β 3-CHO cells double-positive for DsRed and EGFP.

A



B

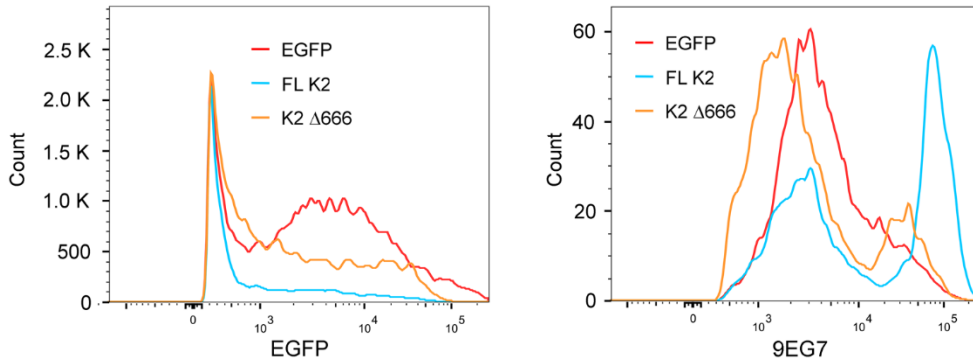


FIGURE S2. Integrin activation was measured using PAC-1 binding to HEL cells transiently expressing DsRed-fused talin-H and EGFP-fused K2 or its mutants (A). Each dot plot and resulting histogram is shown as a set of two panels for each construct. In each dot plot, the upper right quadrant is the cell population double-positive for DsRed and EGFP. Each histogram displays the PAC-1 binding to HEL cells double-positive for DsRed and EGFP. (B) $\beta 1$ integrin activation was measured using mAb 9EG7 to RAW 264.7 cells transiently expressing EGFP alone or EGFP-K2 constructs. The EGFP positive cell population are shown in the right panel and histograms display the 9EG7 binding to RAW 264.7 cells positive for EGFP are in left panel.

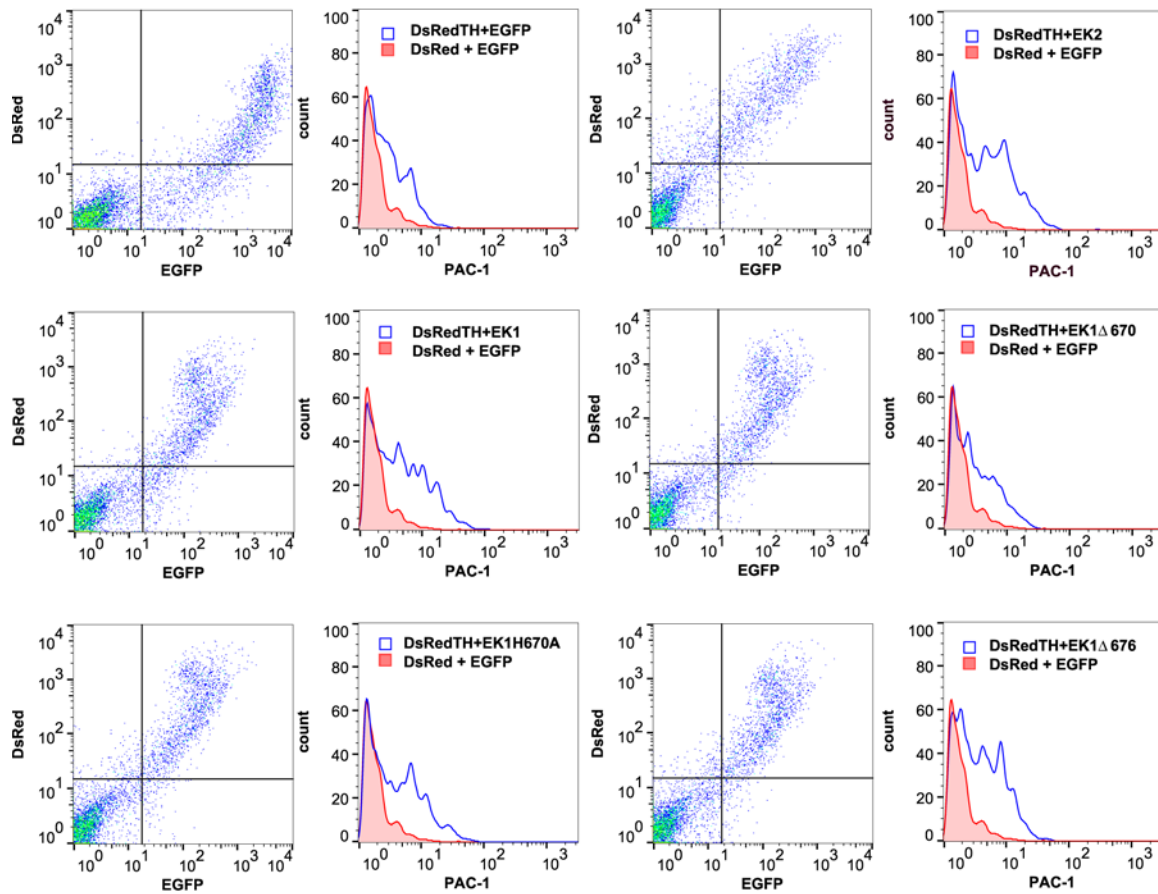


FIGURE S3. Integrin activation was measured using PAC-1 binding to α IIb β 3-CHO cells transiently expressing DsRed-fused talin-H and EGFP-fused K1, K2 or their mutants and analyzed by flow cytometry. Each dot plot and resulting histogram is shown as a set of two panels for each construct. In each dot plot, the upper right quadrant is the cell population double-positive for DsRed and EGFP. Each histogram displays the PAC-1 binding to α IIb β 3-CHO cells double-positive for DsRed and EGFP.

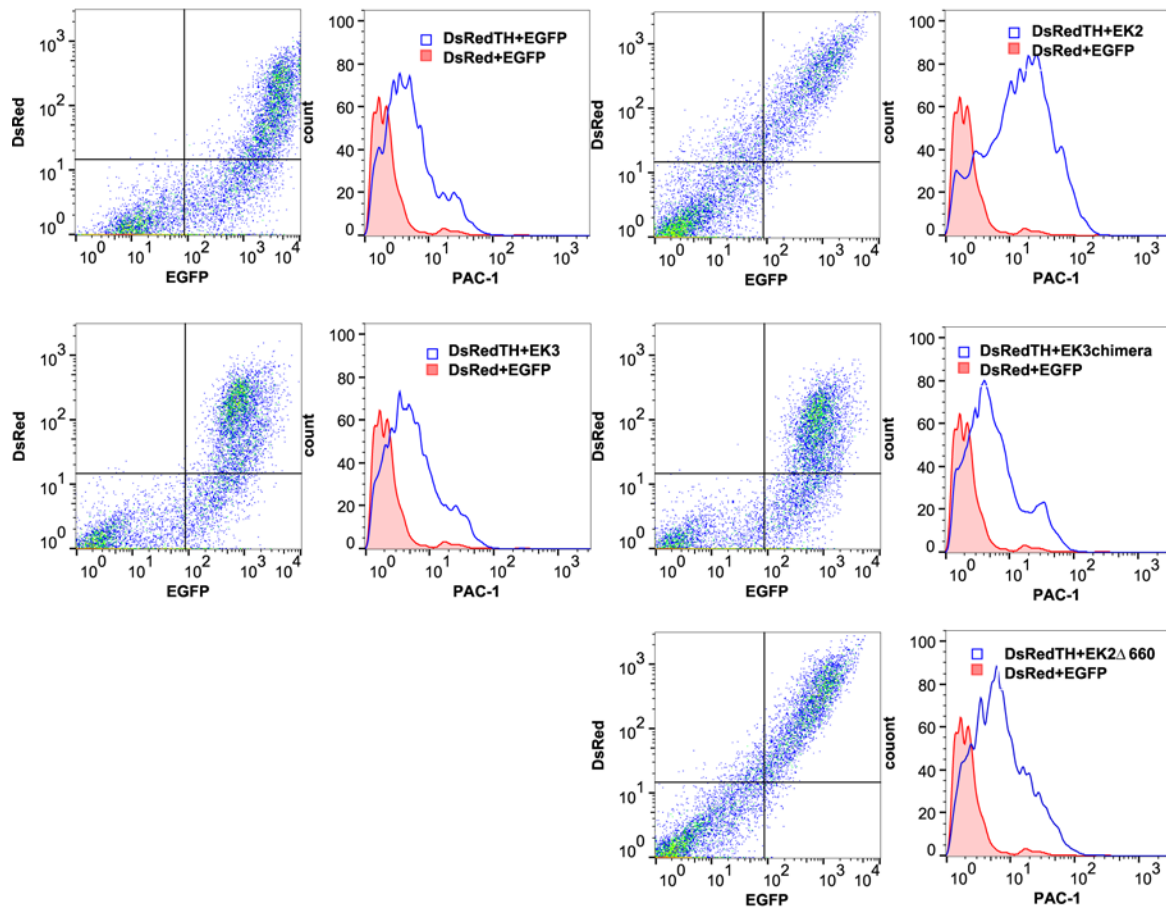


FIGURE S4 Integrin activation was measured using PAC-1 binding to α IIb β 3-CHO cells transiently expressing DsRed-fused talin-H and EGFP-fused K2 K2, K3 or K3 chimera (detailed in text and legend to Fig. 4). Each dot plot and resulting histogram is shown as a set of two panels for each construct. In each dot plot, the upper right quadrant is the cell population double-positive for DsRed and EGFP. Each histogram displays the PAC-1 binding to α IIb β 3-CHO cells double-positive for DsRed and EGFP.