

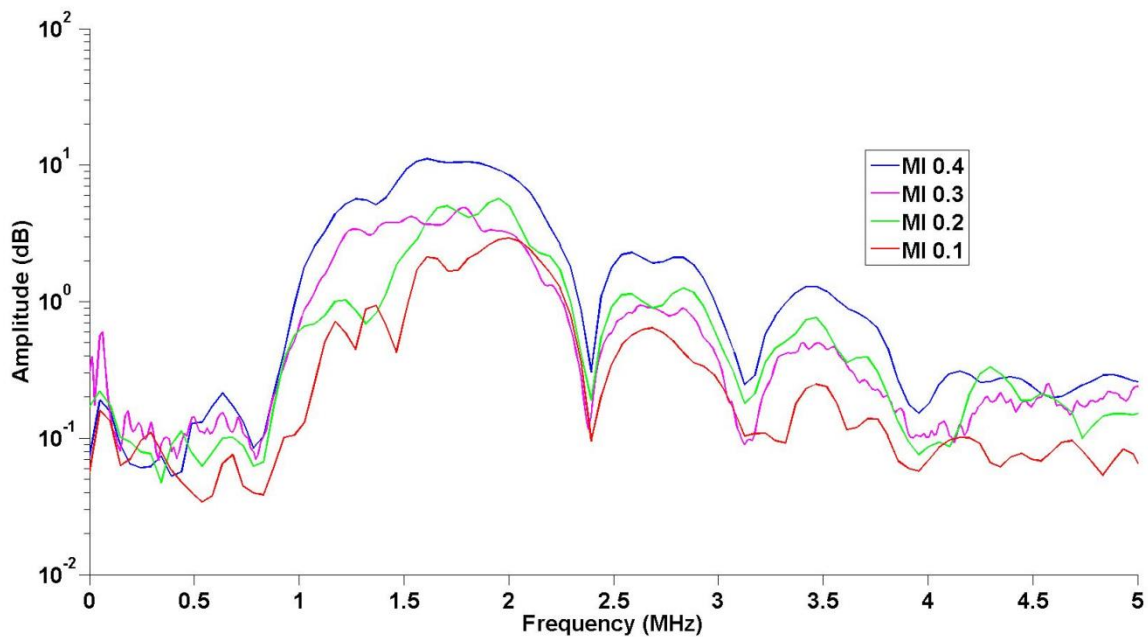
## Supplemental Table

### Raw Video Intensity Values From the First Post-destructive Frame (Background)

	Optison	Definity	Sonazoid	ANOVA p-value
MI 0.1	23±17	23±13	23±9	0.99
MI 0.3	30±17	38±10	37±12	0.63

MI, mechanical index;

## Supplemental Figure



**In vivo Passive Cavitation Detection.** Amplitude-frequency histograms for Sonazoid obtained during CEU perfusion imaging at rest. Harmonic peaks produced by stable cavitation increase with mechanical index (MI) while the broad-band signal produced by inertial cavitation stay modest and is detected only at  $MI \geq 0.3$ .