

# Supplementary Material

## Monitoring disease progression in mild cognitive impairment: associations between atrophy patterns, cognition, APOE and amyloid

---

Farshad Falahati<sup>1,□</sup>, Daniel Ferreira<sup>1</sup>, J-Sebastian Muehlboeck<sup>1</sup>, Maria Eriksdotter<sup>1,2</sup>, Andrew Simmons<sup>1,3-5</sup>, Lars-Olof Wahlund<sup>1,2</sup> and Eric Westman<sup>1,3,\*</sup>

<sup>1</sup> *Division of Clinical Geriatrics, Department of Neurobiology, Care Sciences and Society, Karolinska Institutet, Stockholm, Sweden*

<sup>2</sup> *Department of Geriatric Medicine, Karolinska University Hospital, Stockholm, Sweden*

<sup>3</sup> *Department of Neuroimaging, Centre for Neuroimaging Sciences, Institute of Psychiatry, Psychology and Neuroscience; King's College London, London, UK*

<sup>4</sup> *NIHR Biomedical Research Centre for Mental Health, London, UK*

<sup>5</sup> *NIHR Biomedical Research Unit for Dementia, London, UK*

□ Corresponding author:

Farshad Falahati

Karolinska Institutet

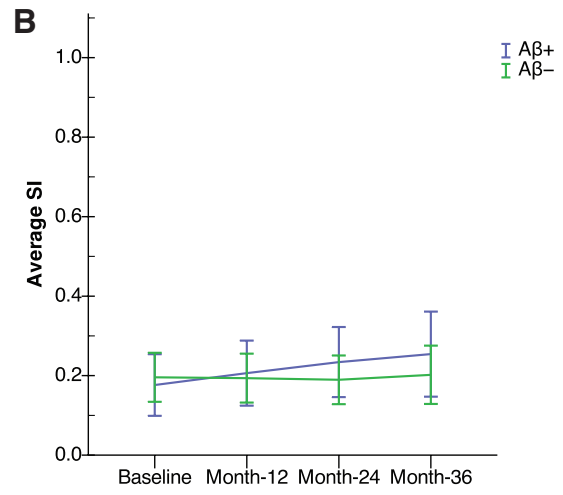
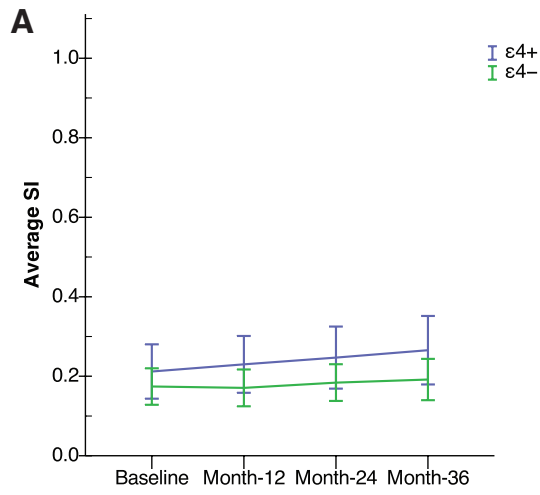
Novum, Plan 5

141 57 Stockholm, Sweden

Phone: +46 8 5858 9397

Fax: +46 8 517 761 11

Email: [farshad.falahati@ki.se](mailto:farshad.falahati@ki.se)



Supplementary Figure S1. Average SI of 129 CN subjects with 36 months follow-up, stratified by: **A)** APOE  $\epsilon 4^+$  and  $\epsilon 4^-$ ; **B)** CSF  $A\beta^+$  and  $A\beta^-$  groups.