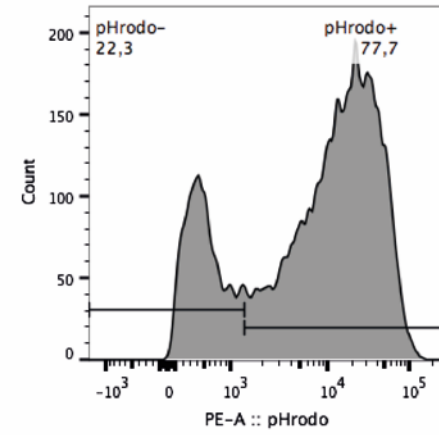
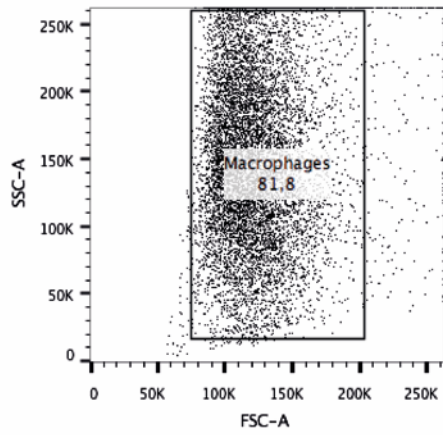
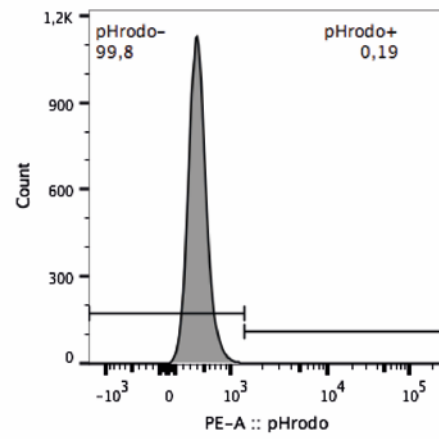
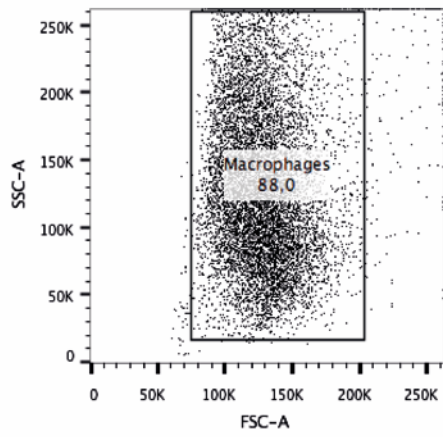
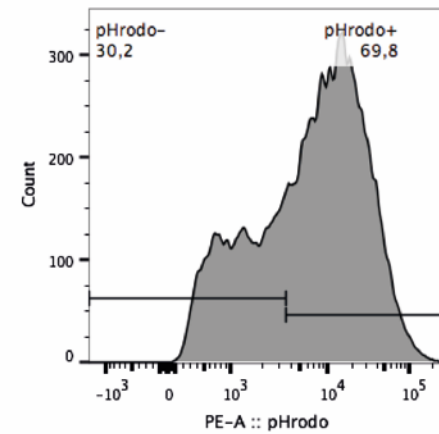
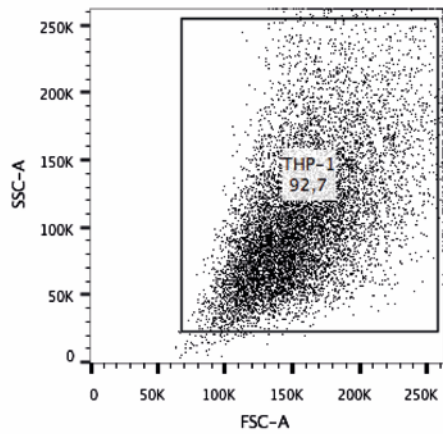
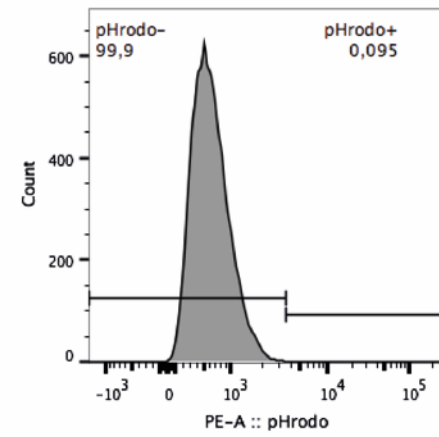
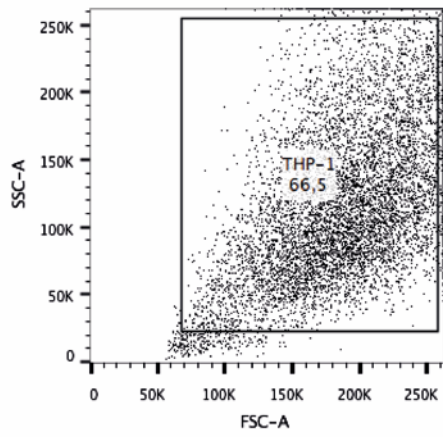
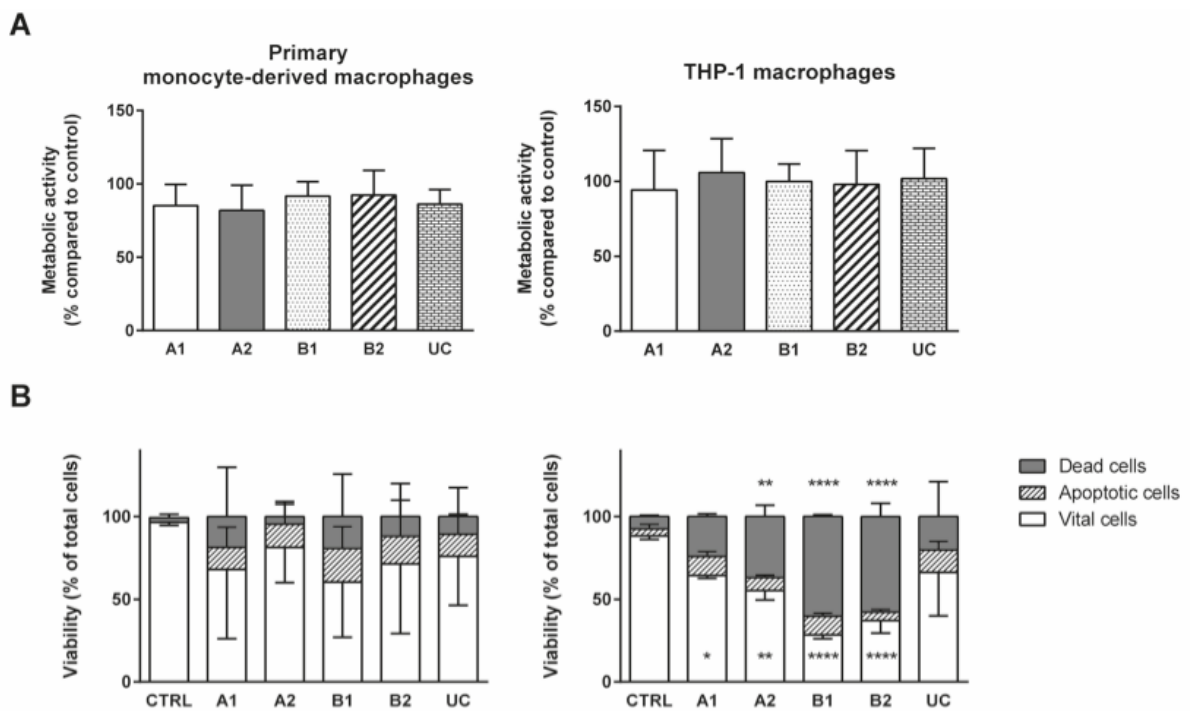


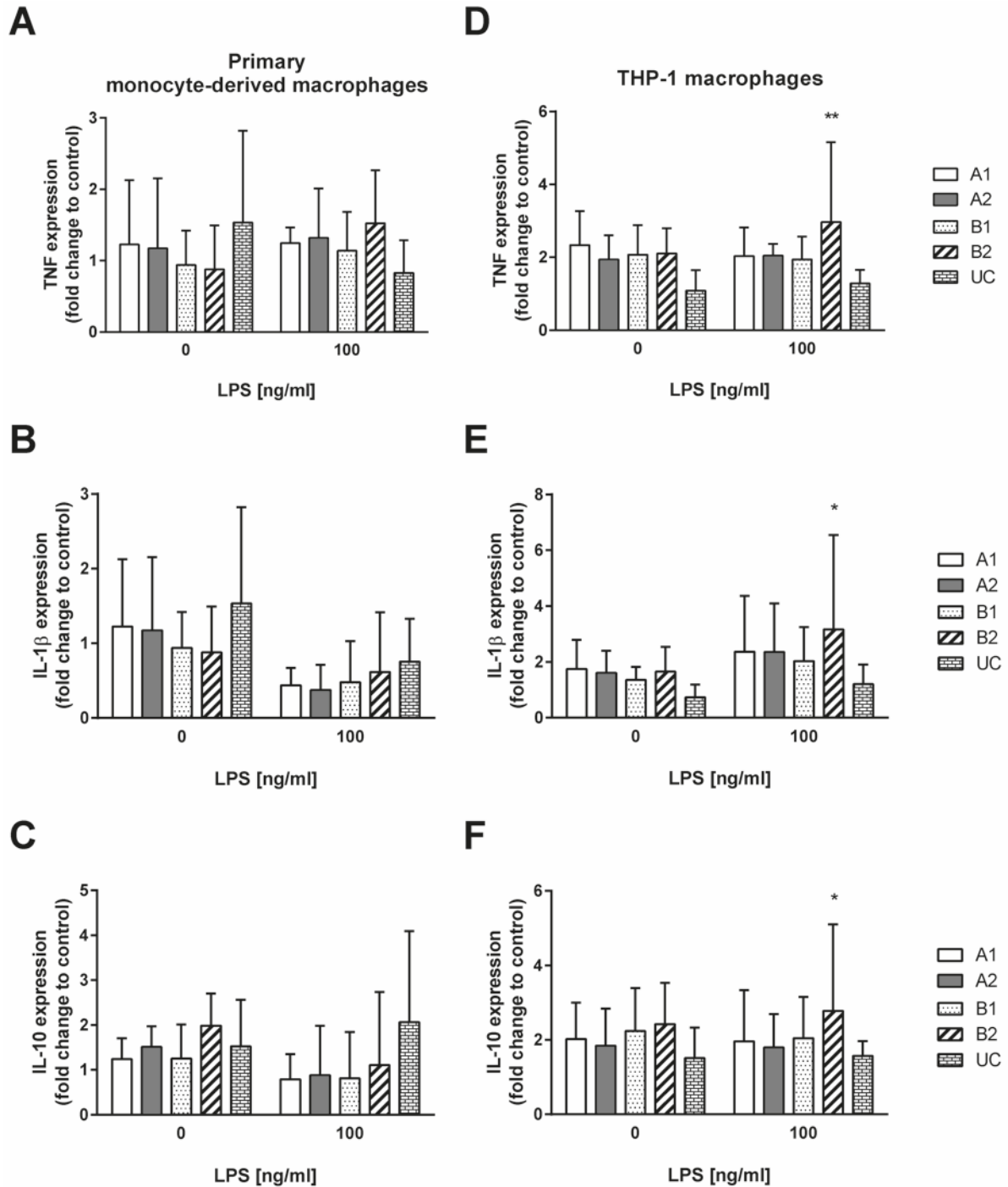
Supplementary Figure 1: Gating for macrophage viability assay. Upper panel: primary monocyte-derived macrophages, lower panel: THP-1 macrophages; Representative analyses of macrophages grown on CTRL and detached by trypsin are shown. Regions Q1: apoptotic cells, Q2/Q3: dead cells; Q4: viable cells.

A**B**

Supplementary Figure 2: Gating strategy for flow cytometry analysis of phagocytosis of macrophages: Two upper panels: primary monocyte-derived macrophages, two lower panels: THP-1 macrophages; Representative analyses of macrophages grown on CTRL, incubated with or without opsonized pHrodo™ BioParticles for 24 hours and detached by trypsin are shown. Gating for macrophage populations and their representative histogram plot for pHrodo™ MFI is shown.

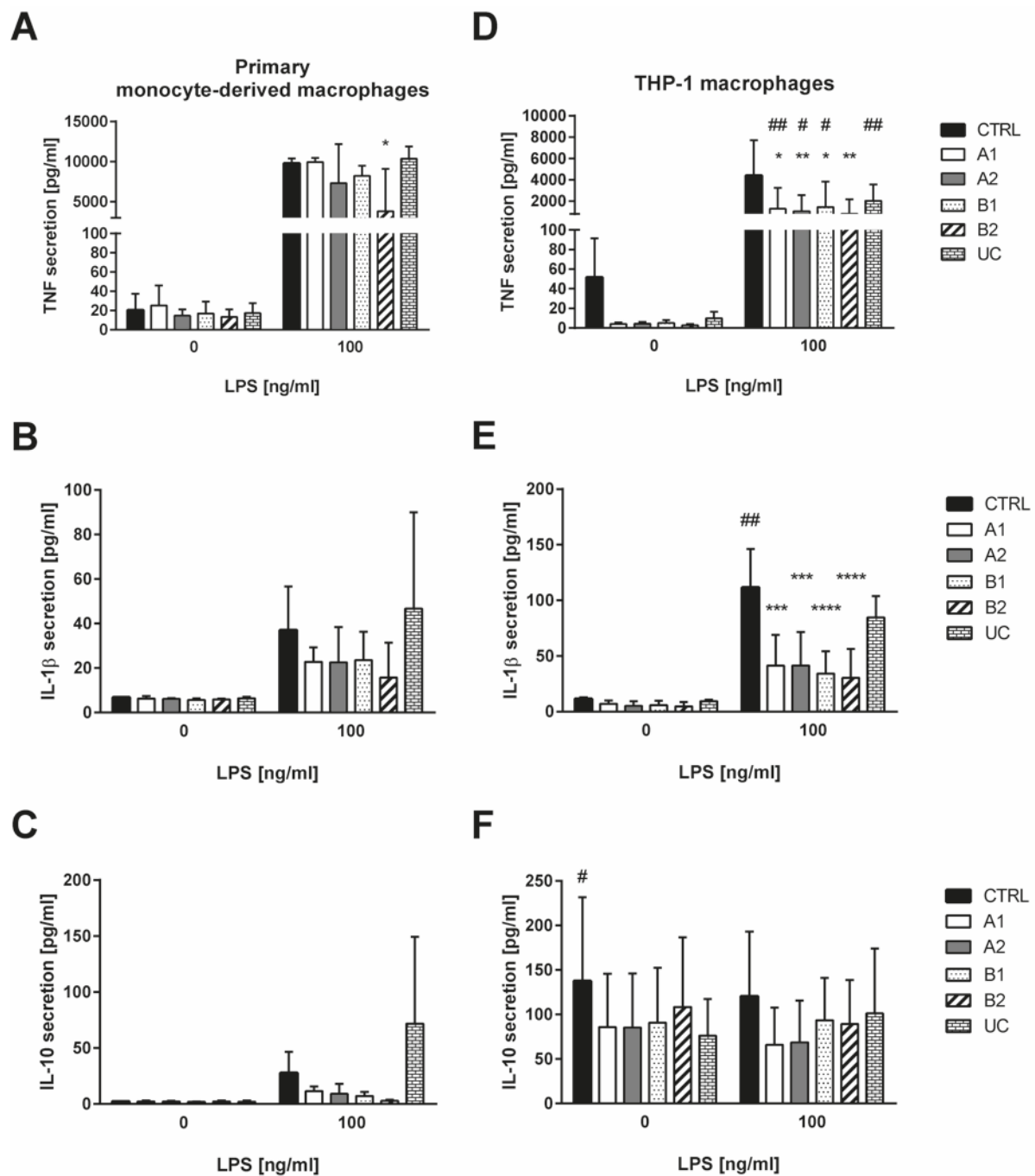


Supplementary Figure 3: Phagocytosis of macrophages on TRPs and CTRL. Macrophages were incubated for 24 hours with opsonized pHrodo™ *Escherichia coli* BioParticles and subsequently detached by temperature reduction or trypsin treatment and analyzed by flow cytometry. Percentages of pHrodo positive primary monocyte-derived macrophages and THP-1 macrophages are shown in **(A)** and **(B)**, respectively. **(C)** and **(D)** show MFI of intracellular pHrodo in primary monocyte-derived macrophages and THP-1 macrophages, respectively. A-D: The mean and standard deviation of four independent experiments are shown.



Supplementary Figure 4: Cytokine expression of macrophages grown on TRPs and CTRL. After six days of differentiation adherent macrophages were stimulated with 100 ng/ml LPS or left untreated for 24 hours. Expression levels in primary monocyte-

derived macrophages (A) to (C) for TNF (A), IL-1 β (B) and IL-10 (C) grown on TRPs compared to CTRL are shown. Expression levels in THP-1 macrophages (D) to (F) for TNF (D), IL-1 β (E) and IL-10 (F) grown on TRPs compared to CTRL are shown. The means and standard deviations of four independent experiments are shown.



Supplementary Figure 5: Cytokine secretion of macrophages grown on TRPs and CTRL. Six days differentiated and adherent macrophages were stimulated with 100 ng/ml LPS or left untreated for 24 hours. Secretion levels (pg/ml) of primary monocyte-derived macrophages **(A)** to **(C)** for TNF **(A)**, IL-1 β **(B)** and IL-10 **(C)** grown on TRPs and CTRL are shown. Secretion levels (pg/ml) of THP-1 macrophages **(D)** to **(F)** for TNF **(D)**, IL-1 β **(E)** and IL-10 **(F)** grown on TRPs and CTRL are shown. The means and standard deviations of three independent experiments are shown.