

## Supplemental Information

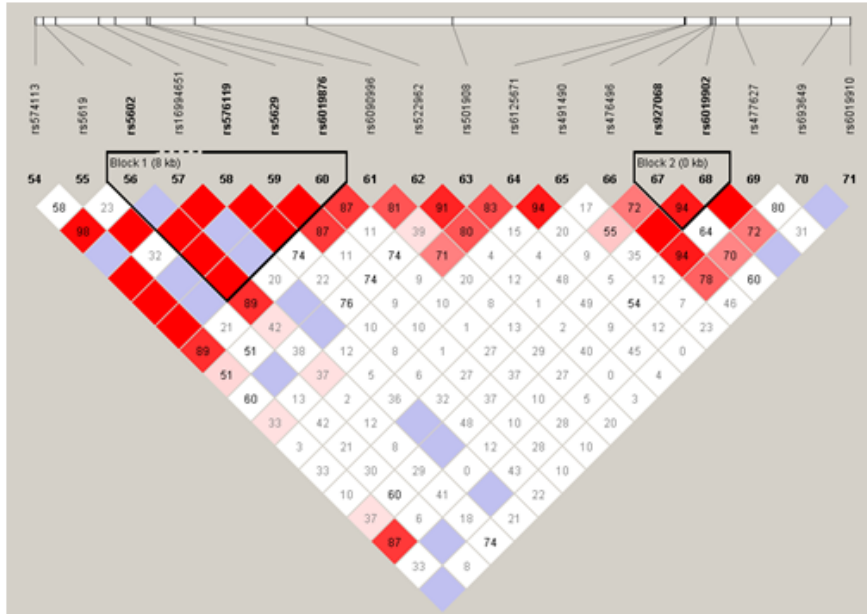
### Nonsteroidal Anti-inflammatory Drug Interaction with Prostacyclin Synthase Protects from Miscarriage

Digna R. Velez Edwards,<sup>1,2,3,4\*</sup> Todd L. Edwards,<sup>2,4,5,7</sup> Michael J. Bray,<sup>4</sup> Eric Torstenson,<sup>4</sup> Sarah Jones,<sup>2</sup> Martha J. Shrubsole,<sup>1,2,5,7</sup> Harvey J. Muff,<sup>5,6,7</sup> and Katherine E. Hartmann,<sup>1,2,3</sup>

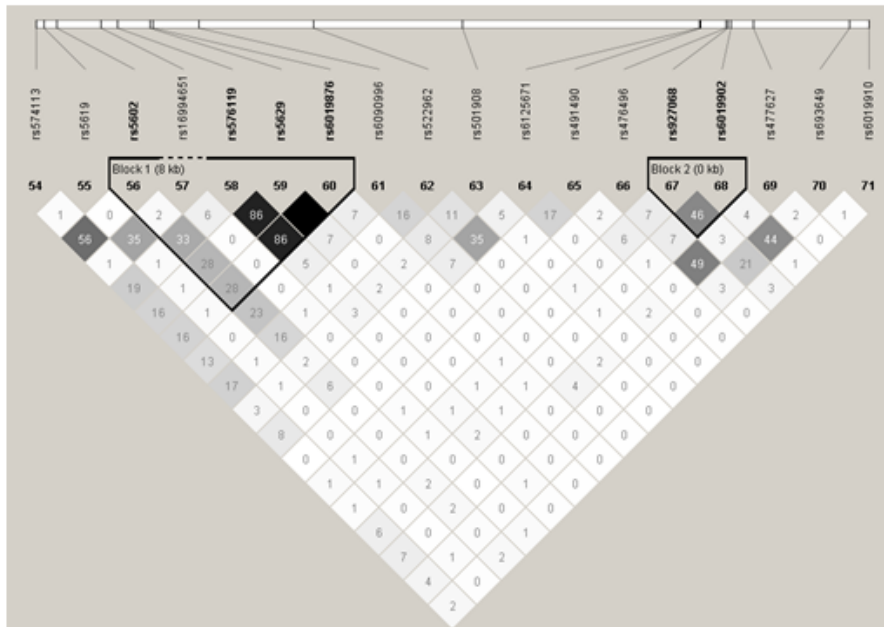
<sup>1</sup>Vanderbilt Epidemiology Center, <sup>2</sup>Institute for Medicine and Public Health, <sup>3</sup>Department of Obstetrics and Gynecology, <sup>4</sup>Vanderbilt Genetics Institute, <sup>5</sup>Division of Epidemiology, <sup>6</sup>Division of General Internal Medicine and Public Health, Vanderbilt University, Nashville, Tennessee, 37203, <sup>7</sup>GRECC, Department of Veterans Affairs, Tennessee Valley Healthcare System, Nashville, Tennessee

[\\*Corresponding author: digna.r.velez.edwards@vanderbilt.edu](mailto:digna.r.velez.edwards@vanderbilt.edu)

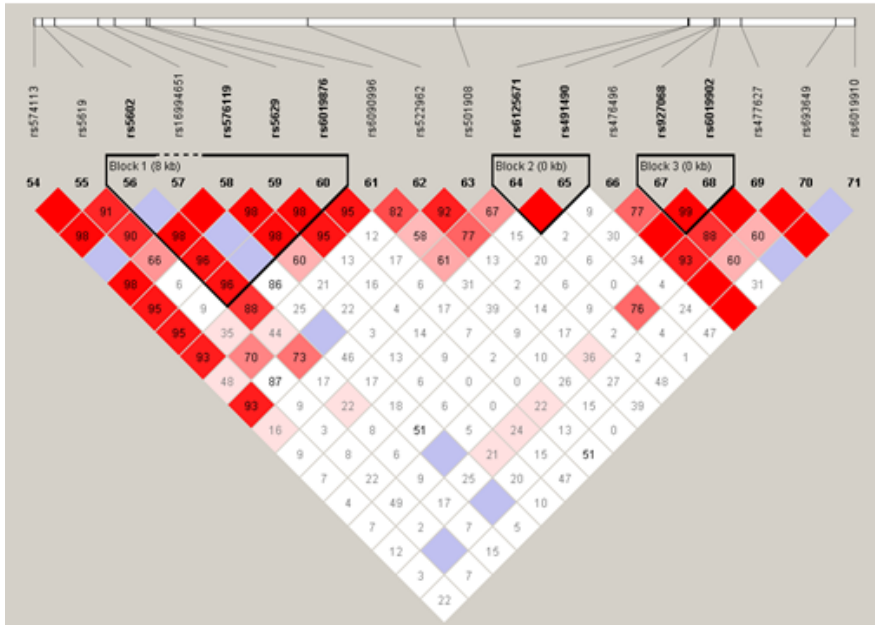
A.



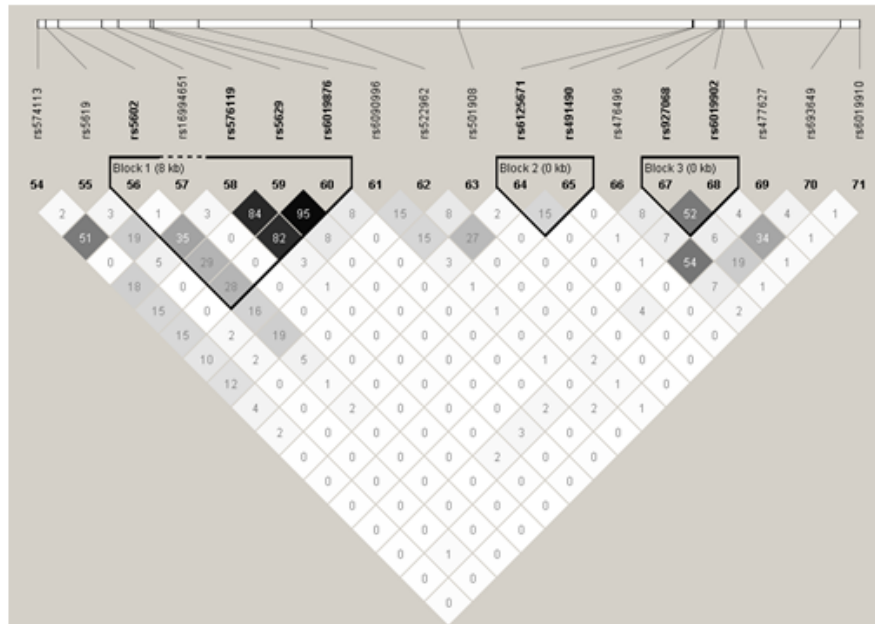
B.



C.



D.



**Supplemental Figure 1. Linkage disequilibrium in *PGIS* in cases and comparison group.** Linkage disequilibrium (LD) plots are presented for SAB cases and comparison group including both D' and  $r^2$ . All figures are oriented 5' to 3', right to left, relative to the gene orientation on the

minus strand.  $D'$  (shades of red) and  $r^2$  (shades of black) are indicated in percentages within squares in the LD plots, with solid blocks without numbers indicating  $D' = 1$  and  $r^2 = 1$ . Strong LD is indicated by red or dark gray, while pink and light gray and white indicate uninformative and low confidence values, respectively. LD Blocks were created in HaploView that creates 95% confidence bounds on  $D'$  considered being in strong LD where 95% of the comparisons made are informative.

**Supplemental Table 1. PGE-M single SNP association analyses of strongest association SNPs from Table 2**

Gene	rsID	Model	N	RA	RAF	BETA	95% CI		P
							Lower	Upper	
<i>PGIS</i>	rs5602	<b>Overall<sup>1</sup></b>	610	A	0.48	0.09	-0.002	0.19	0.033
		<b>Males<sup>2</sup></b>	453	A	0.46	0.10	0.01	0.35	0.038
		<b>Females<sup>2</sup></b>	157	A	0.51	0.18	0.01	0.19	0.036

Chr-chromosome; BP-base pair; RA-risk allele; RAF-risk allele frequency; CI-95% Confidence Interval.

<sup>1</sup>Models adjusted for age and sex

<sup>1</sup>Models adjusted for age