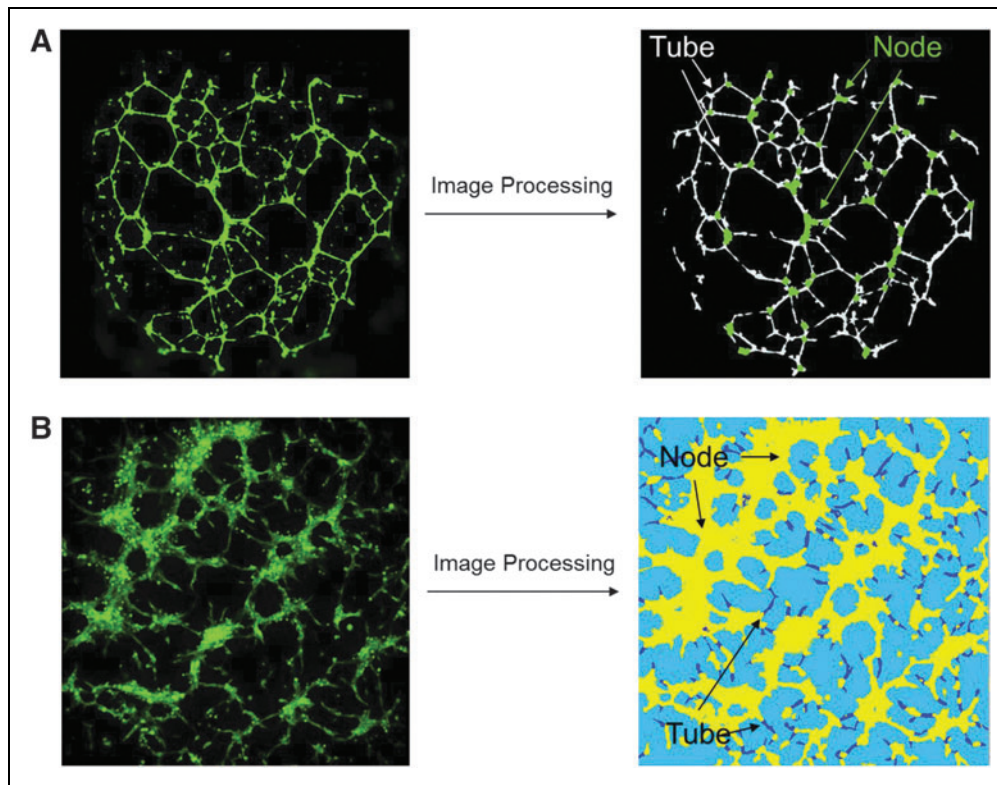


SUPPLEMENTARY DATA



Supplementary Fig. S1. Image processing for the Geltrex™ (A) and SP-105 hydrogel (B) experiments. For Geltrex image processing (A), the node area is shown in *green* and tubes are shown in *white*. Whereas for the SP-105 hydrogel image processing (B), the node area is in *yellow* and the tube or protrusions are in *dark blue*.