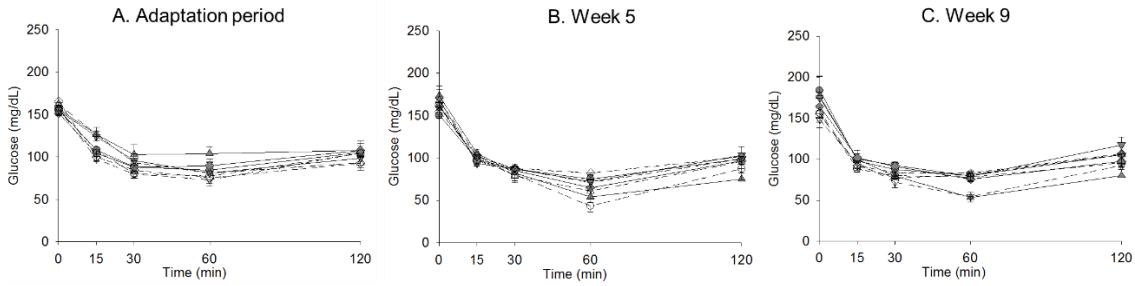
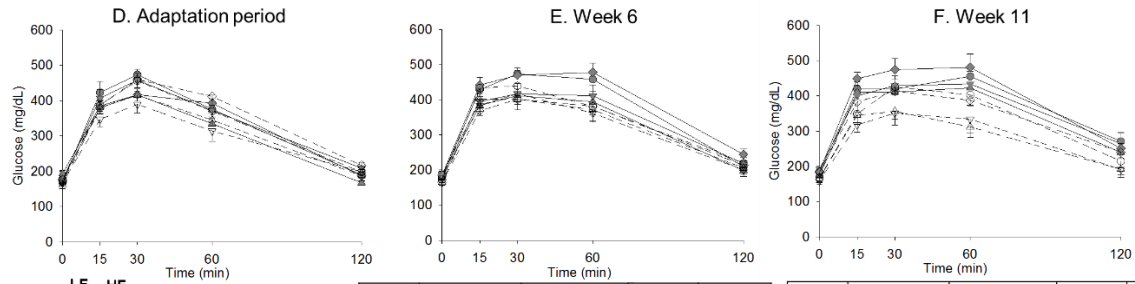


ITT curve.



GTT curve.



LF HF
 ○ —● Control
 △ —▲ 0.06 mg/kg bw/day
 ▽ —◆ 0.6 mg/kg bw/day
 ◇ —◇ 6 mg/kg bw/day

Effect	Dietary fat (D)	Imidacloprid (I)	Time (T)	D x I x T
P-value	<.0096	n.s.	<.0001	n.s.

Effect	Dietary fat (D)	Imidacloprid (I)	Time (T)	D x I x T
P-value	<.0001	0.0356	<.0001	n.s.

Figure 1S. Effects of imidacloprid on insulin tolerance test (ITT) (A, B, C) and glucose tolerance test (GTT) (D, E, F). Mice were fed with low fat diet or high fat diet supplemented with (0, 0.06, 0.6 and 6 mg/kg bw/day) imidacloprid for 12 weeks. ITT was measured during adaptation period, week 5 and 9. GTT was measured during adaptation period, week 6 and 11. Blood was collected from the tail vein, and glucose levels were determined at 0 min, then the insulin (ITT) or glucose solution (GTT) was administered by intraperitoneal injection and glucose level were further measured at 15, 30, 60 and 120 min. LF, low fat diet; HF, high fat diet. Numbers represent means \pm SE (n=5-8).