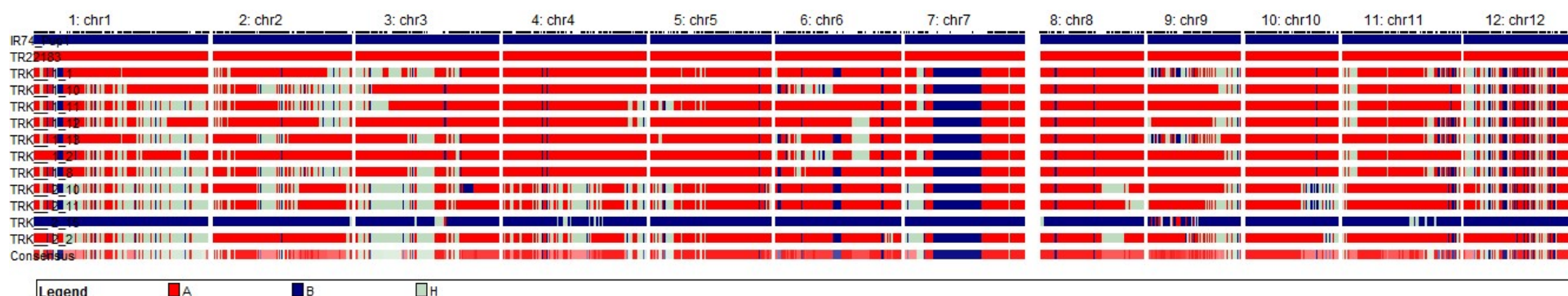
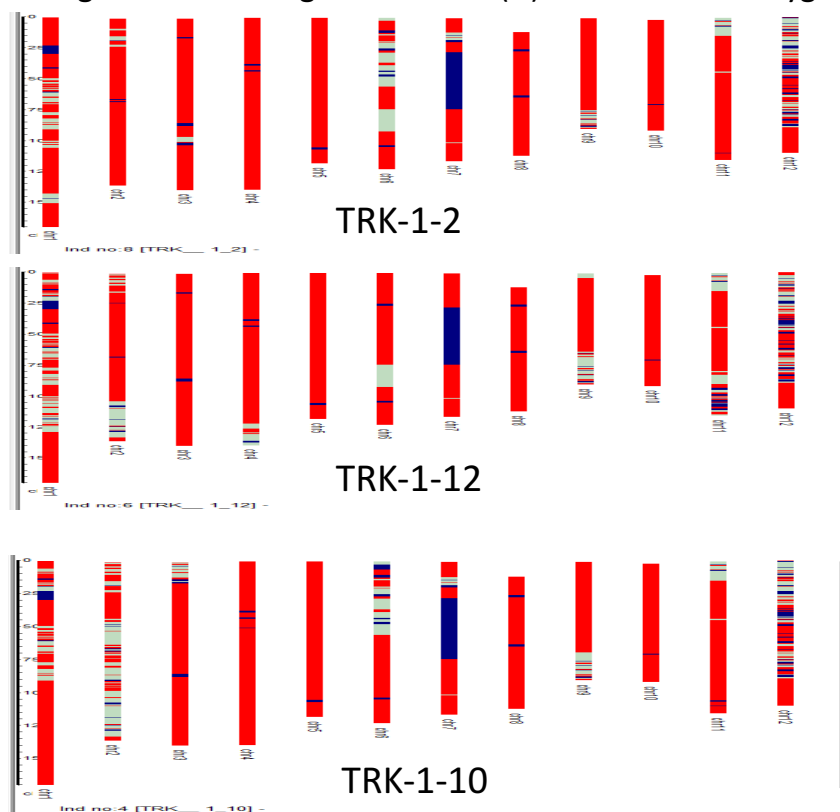


Figure S4. Use of C6AIR for background selection during TR22183-Pup1 NIL development



Graphical genotypes of selected BC2F1 of TR22183xIR74-Pup1 using 2055 polymorphic SNP markers. All selected plants were subjected to foreground genotyping using Pup1 major markers. Red color (A) indicates TR22183 segments, blue color (B) indicates donor introgression while light blue color (H) indicates heterozygosity.



Graphical genotypes of the top 3 best BC2F1 plants in terms of percent recipient segment recovered.

	Alias	A (%)	B (%)	H (%)	Total (cM)	Recombin	H-segments
	TR22183	100	0	0	1438.7	0	0
	TRK-1-2	81.9	7.1	11	1438.7	230	84
	TRK-1-12	78.7	7.5	13.8	1438.7	284	107
	TRK-1-10	77.3	7.8	15	1438.7	303	118
	TRK-1-1	75.5	8.9	15.5	1438.7	344	132
	TRK-1-11	75.2	7.3	17.5	1438.7	320	131
	TRK-1-13	75.1	8.8	16.1	1438.7	324	121
	TRK-1-8	74	8.2	17.9	1438.7	323	126
	TRK-2-2	67.5	7	25.6	1438.7	355	148
	TRK-2-6	63.1	8.7	28.2	1438.7	430	182
	TRK-2-7	61.6	9.2	29.2	1438.7	456	193
	TRK-2-10	61.5	9.7	28.7	1438.7	435	181
	TRK-2-11	61.1	9	29.9	1438.7	454	192
	TRK-2-3	58.4	9.9	31.7	1438.7	434	181
	TRK-2-8	54.7	9.5	35.9	1438.7	506	216
	TRK-2-15	1	95.8	3.3	1438.7	85	32
	IR74 Pup1	0	100	0	1438.7	0	0

Genotypic summary statistics of the selected BC2F1.