

Supplemental online content for:

Associations Between End-of-Life Cancer Care Patterns and Medicare Expenditures

Shi-Yi Wang, MD, PhD; Jane Hall, PhD; Craig E. Pollack, MD; Kerin Adelson, MD; Amy J. Davidoff, PhD; Jessica B. Long, MPH; and Cary P. Gross, MD

J Natl Compr Canc Netw 2016;14(8):1001–1008

- **eAppendix 1:** Sensitivity Analyses Examining Regional Expenditure Variation (Between the Top and Bottom Quintiles) Explained by Intensive End-of-Life Care Indicators
- **eAppendix 2:** Correlations Between Intensive Care Unit Use and Overall Hospitalization at the Hospital Referral Region Level

eAppendix 1. Sensitivity Analyses Examining Regional Expenditure Variation (Between the Top and Bottom Quintiles) Explained by Intensive End-of-Life Care Indicators

	Main Model	Sensitivity Analysis 1 ^a	Sensitivity Analysis 2 ^b	Sensitivity Analysis 3 ^c
Percentages explained by the variables				
Late chemotherapy	0.8	0.5	0.4	0.8
Short hospice stay	1.0	1.1	0.4	0.9
Repeated ED visits	18.9	19.2	8.6	18.3
Repeated hospitalizations	21.0	23.2	11.1	20.4
In-hospital death	30.8	30.6	17.5	29.5
ICU use	37.6	39.0	21.4	34.3
All covariates	63.0	67.6	31.0	59.1

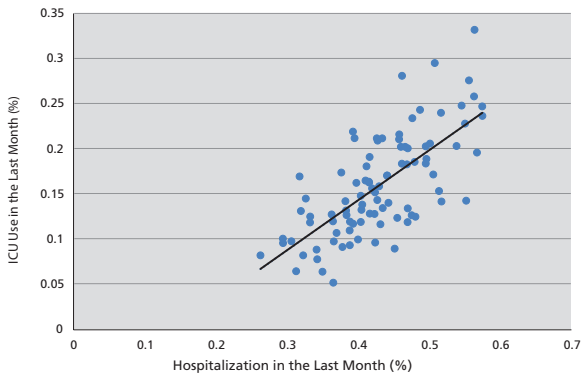
Abbreviations: ED, emergency department; ICU, intensive care unit.

^aIncluding patients who survived 1–36 months after cancer diagnosis.

^bUsing ordinal least squares without log-transformation and winsorization.

^cExcluding decedents who did not use hospice and did not have provider visits during the last 30 days.

eAppendix 2. Correlations Between Intensive Care Unit Use and Overall Hospitalization at the Hospital Referral Region Level



Person correlation coefficient = 0.707; $P < .001$.
Abbreviation: ICU, intensive care unit.