

Supplementary Materials: Mechanical contact characteristics of PC3 human prostate cancer cell on complex shaped silicon micropillars

Brandon B. Seo ¹, Zeinab Jahed ², Jennifer A. Coggan ³, Yeung Yeung Chau ³, Jacob L. Rogowski ¹, Frank X. Gu ¹, Weijia Wen ⁴, Mohammad R. K. Mofrad ² and Ting Y. Tsui ^{1,*1}. Heading

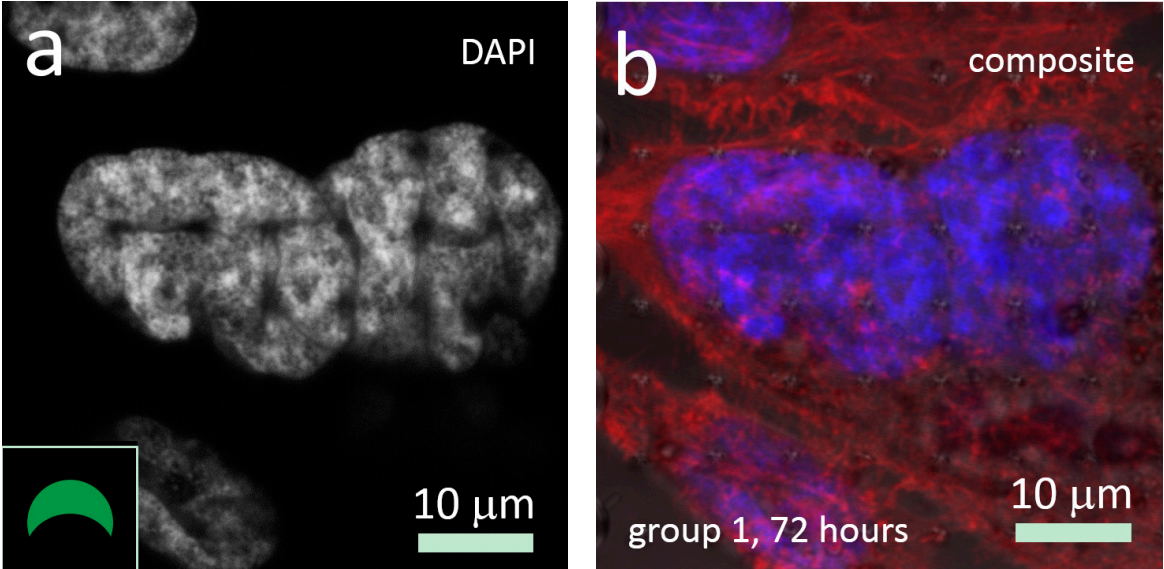


Figure S1. (a) show a DAPI only micrograph with dark line structures radiating out at the corners of the small c-shaped pillars (group 1). Composite image of the same cell is shown in (b). This cell was incubated on patterned silicon substrate for 72 hours. Inset indicates the pillar orientation.

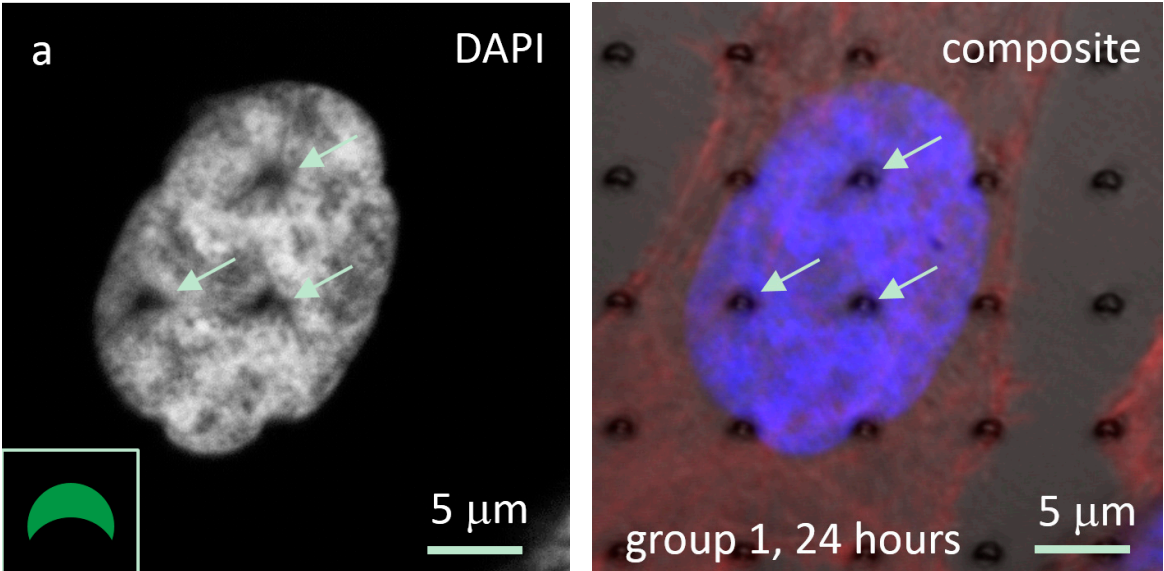


Figure S2. Cont.

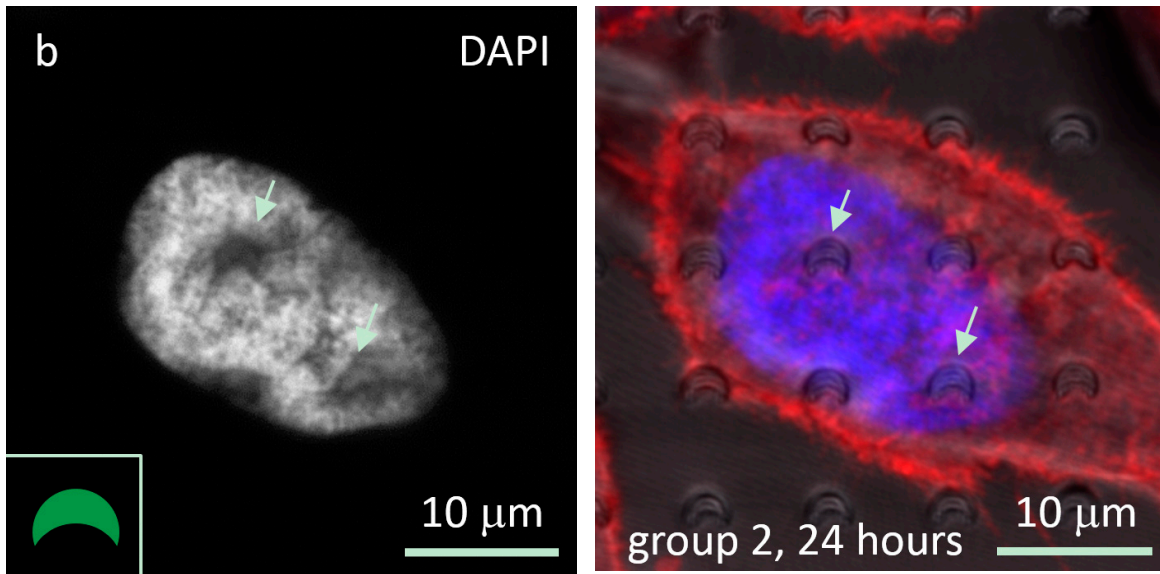


Figure S2. Representative DAPI only and composite confocal micrographs of dark line structures radiating out at the corners of (a) small C-shaped pillars (group 1) and (b) large C-shaped pillars (group 2) respectively. Cells were incubated on patterned substrate for 24 hours. Insets indicate the orientation of the pillars.