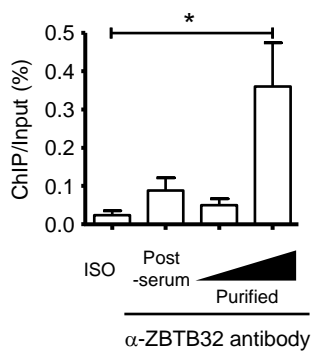
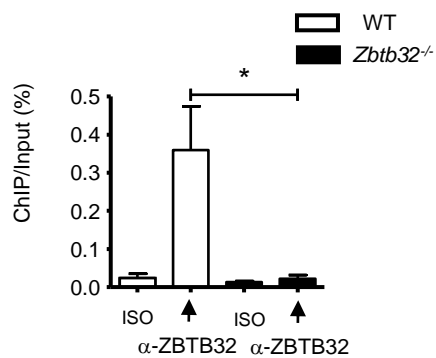


a



b



S10 Fig. Titration of ZBTB32 antibody

WT and *Zbtb32*^{-/-} mice were infected with LCMV-Armstrong. CD44^{hi} CD8⁺ T cells were isolated at day 7 post-infection, and chromatin was prepared. Purified ZBTB32-specific antibodies as described in supplemental materials and methods were used for ChIP assays (a,b). ChIP eluates were amplified by Q-PCR for the *Eomes* gene locus. Iso, isotype control antibody.