

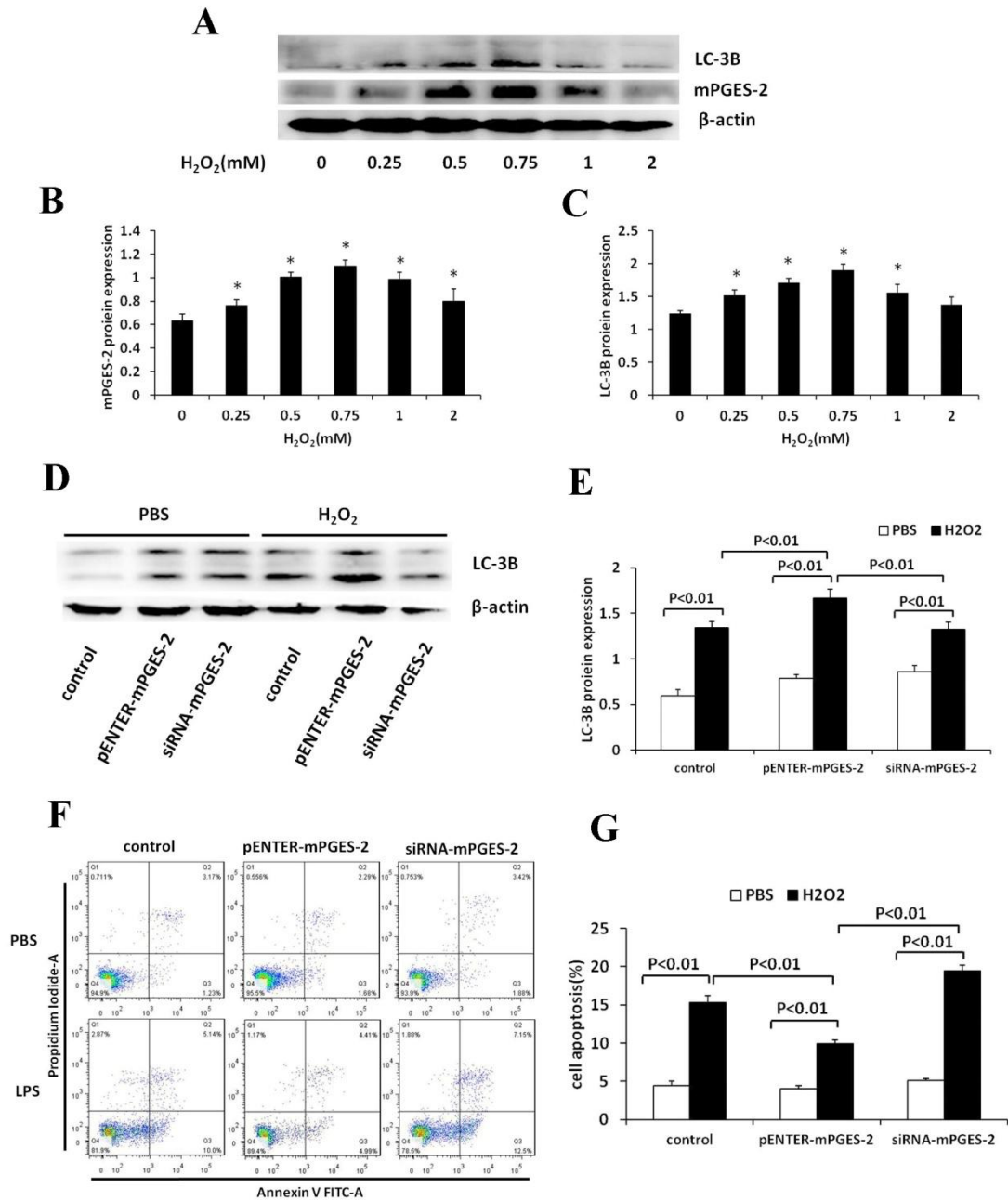
**Aggravation of acute kidney injury by mPGES-2 down regulation is associated  
with autophagy inhibition and enhanced apoptosis**

Ting Li<sup>1,2#</sup>, Ying Liu<sup>1,#,\*</sup>, Jie Zhao<sup>3</sup>, Shuying Miao<sup>1</sup>, Yunfei Xu<sup>1</sup>, Ke Liu<sup>1</sup>, Meidong  
Liu<sup>1</sup>, Guiliang Wang<sup>4</sup>, Xianzhong Xiao<sup>1,\*</sup>

<sup>1</sup> Department of Pathophysiology, Xiangya School of Medicine, Central South University, Changsha 410078, China; <sup>2</sup> Department of Physiology, Changzhi Medical College, Changzhi 046000, China; <sup>3</sup> Department of Neurosurgery, Xiangya Hospital, Central South University, Changsha 410078, China; <sup>4</sup> Department of Digestive Internal Medicine, Gannan Medical University Pingxiang Hospital, Pingxiang 337055, China.

# These authors contributed equally to this work.

## Supplementary Figures



**Supplementary Fig.1** The expression of mPGES-2 in H<sub>2</sub>O<sub>2</sub>-treated HK-2 cells and the effects of mPGES-2 overexpression and interference on autophagy and apoptosis of HK-2 cells treated with H<sub>2</sub>O<sub>2</sub>

A) The expression of mPGES-2 and LC-3B protein in HK-2 cells treated with H<sub>2</sub>O<sub>2</sub> at different concentrations for 12h. B) The gray scale ratio of mPGES-2 protein to

$\beta$ -actin. C) The gray scale ratio of LC3B-II/LC3B-I. D) Shown are immunoblot of LC3B-II/LC3B-I in HK-2 cells transfected with *mPGES-2* plasmid (pENTER-*mPGES-2*) and siRNA-*mPGES-2* after treatment with H<sub>2</sub>O<sub>2</sub> (0.75 mM) for 12 h. E) Shown are the gray scale ratios of LC3B-II/LC3B-I. F) Shown are the apoptosis of HK-2 cells in different groups examined by flow cytometry. G) Shown are the ratios of apoptotic cells in different groups. \* $P < 0.05$  versus the 0mM group. Data are mean  $\pm$ SD (n=3).