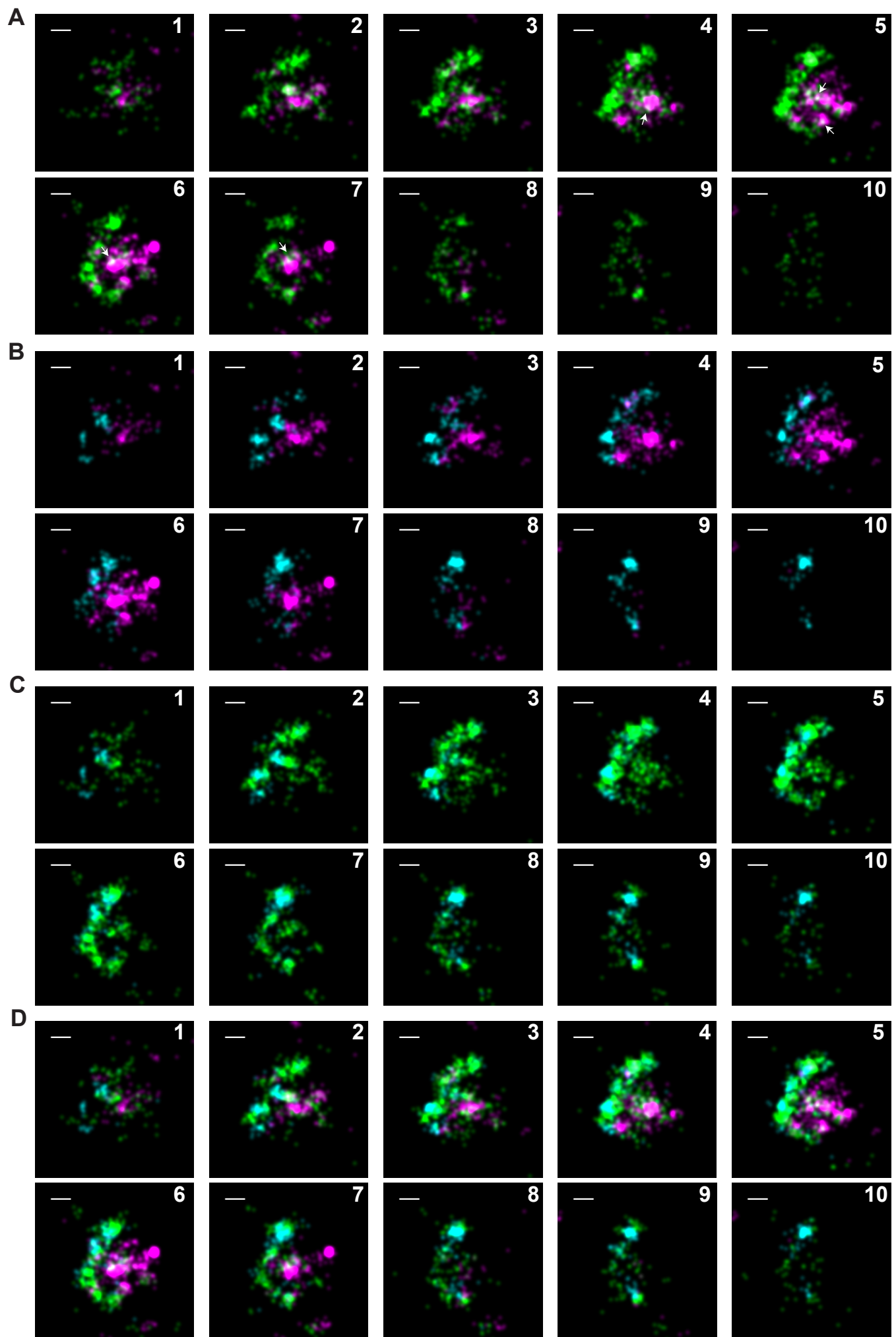


**Appendix for Ge L et al, Remodeling of ER-exit sites initiates a membrane supply pathway for autophagosome biogenesis (2017)**

**Table of contents**

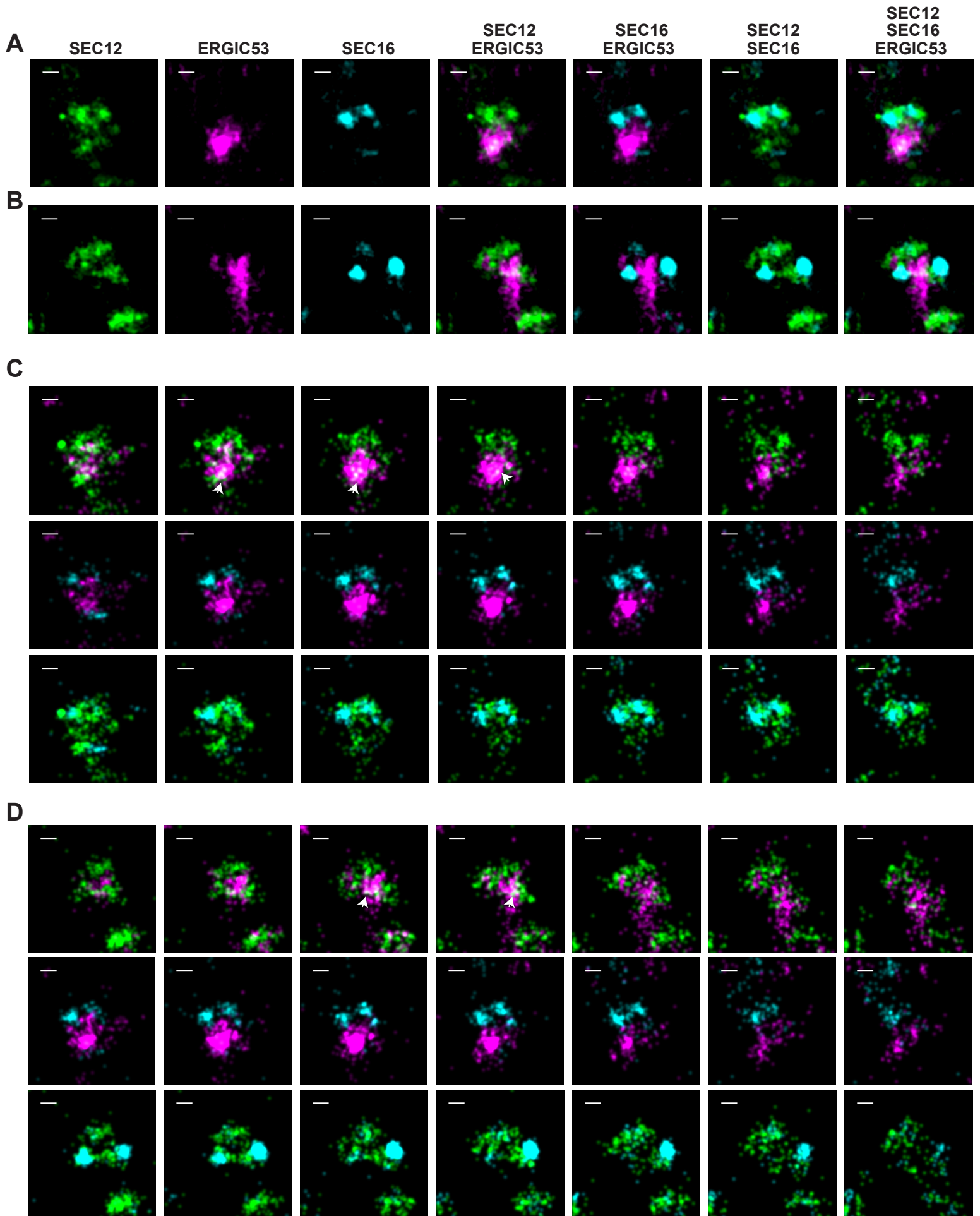
1. Appendix Figure S1	2-3
2. Appendix Figure S2	4-5



## Appendix Figure S1

### Virtual Z-sections shown for Figure 1E

Virtual Z-sections (50 nm thickness and 40 nm per step) of (E) were collected. Of the total, 10 of 13 sections are shown. Arrows in (A) indicate the ERGIC-localized SEC12. Bar: 100 nm. SEC12: green; ERGIC: magenta; SEC16: Cyan. (A, same as Fig 1E) SEC12/ERGIC53; (B) SEC16/ERGIC53; (C) SEC12/SEC16; (D) SEC12/SEC16/ERGIC53.



Appendix Figure S2

## Appendix Figure S2

### Extra SEC12-ERES/ERGIC structures from STORM analysis

More enlarged structures of SEC12 compartment obtained from the STORM analysis in Figure 1C-E are shown.

(A, B) Virtual stack images showing the two extra structures of SEC12 compartment. Bar: 100 nm

(C) Virtual Z-sections (50 nm thickness and 40 nm per step) corresponding to (A). Arrows indicate the ERGIC-localized SEC12. Bar: 100 nm

(D) Virtual Z-sections (50 nm thickness and 40 nm per step) corresponding to (B). Arrows indicate the ERGIC-localized SEC12. Bar: 100 nm

SEC12: green; ERGIC53: magenta; SEC16: Cyan