

Supplementary figure legend:

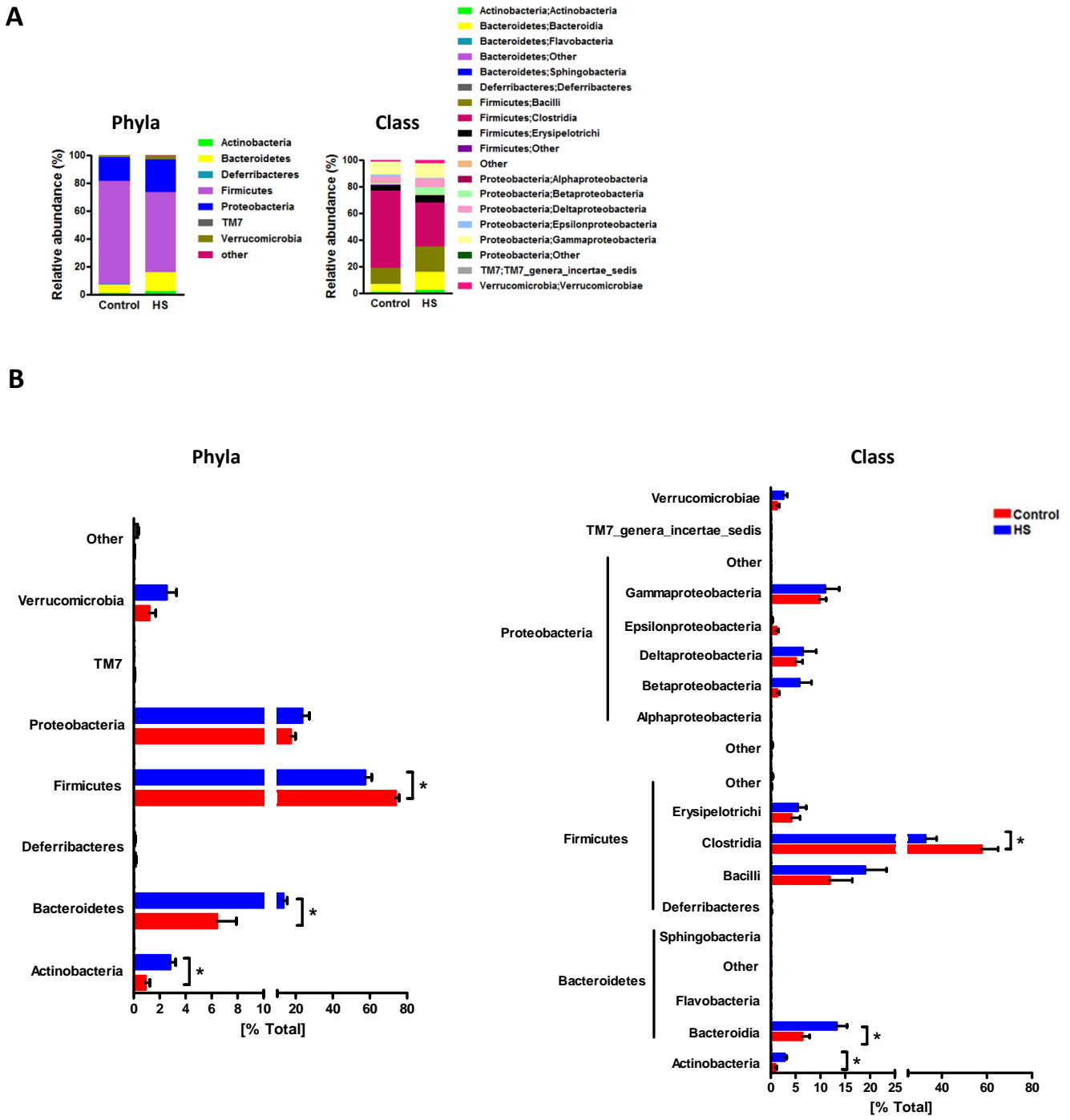
Supplementary Figure 1. The impact of chronic high salt feeding on cecal bacterial composition. C57BL/6 mice were fed with normal or high-salt drinking water for 8 weeks (n = 7). (A, B) Percentages of each community contributed by the indicated phyla or class. HS: high salt. Results are expressed as mean \pm SEM. *p < 0.05.

Supplementary Figure 2. LDA along with effect size measurements was applied to present the enriched bacteria in each group in cecal content. HS: high salt.

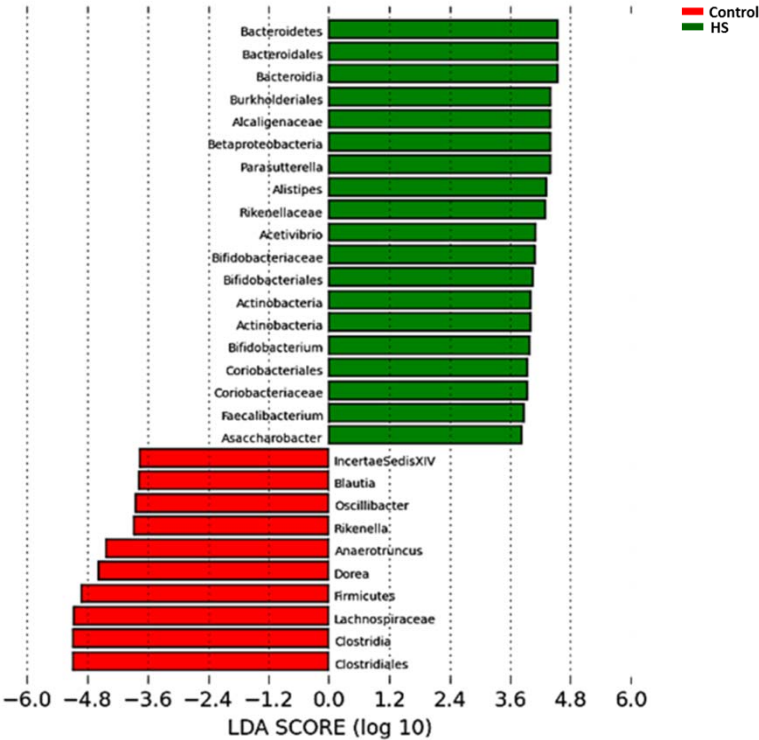
Supplementary Figure 3. Heat map of the expression of all related genes (displayed by log₂ (RPKM)) involved in “Cytokine-cytokine receptor interaction”, “NF- κ B signaling pathway” and “Toll-like receptor signaling pathway” based on the transcriptome analysis (n = 2). HS: high salt.

Supplementary Figure 4. Effect of chronic high salt feeding on sodium level in the cecal content. C57BL/6 mice were fed with normal or high-salt drinking water for 8 weeks (n = 10). The sodium concentration of cecal content in each group. HS: high salt.

Supplementary Figure 1

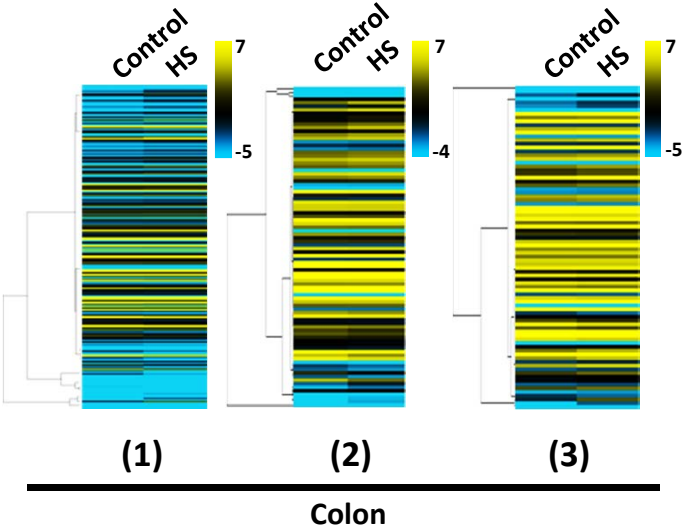
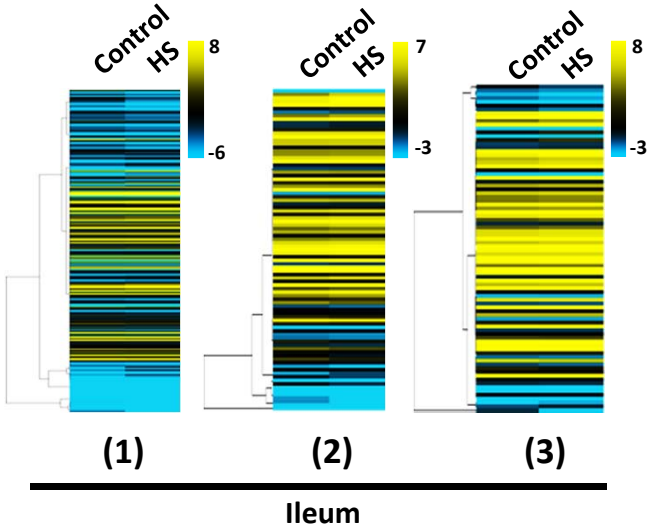


Supplementary Figure 2



Supplementary Figure 3

- (1) Cytokine-cytokine receptor interaction
- (2) NF-kappa B signaling pathway
- (3) Toll-like receptor signaling pathway



Supplementary Figure 4

