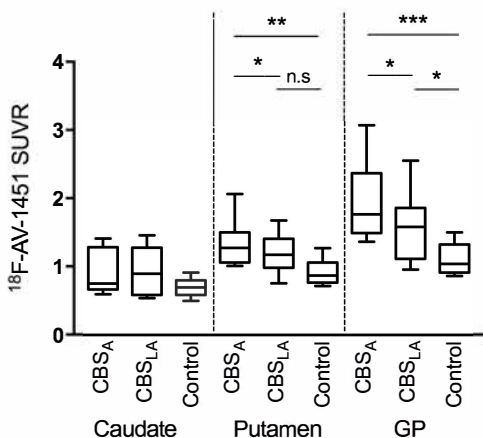
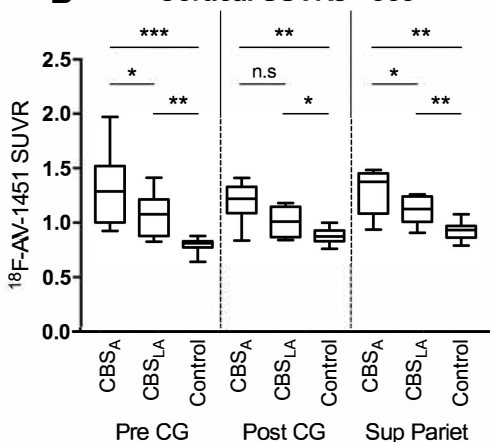


A Basal ganglia SUVRs - occ



B Cortical SUVRs - occ



Supplementary Figure e-3

$^{18}\text{F-AV-1451}$ SUVRs in different brain regions with an occipital reference region. SUVRs are shown for the basal ganglia (A) and the cerebral cortex (B). Results are shown for CBS, most affected side (CBS_A); CBS less affected side (CBS_{LA}) and Controls. Pre CG - Precentral gyrus; Post CG - Postcentral gyrus; Sup Pariet - Superior Parietal gyrus. * p < 0.05, ** p < 0.01, *** p < 0.001, n.s. - not significant.