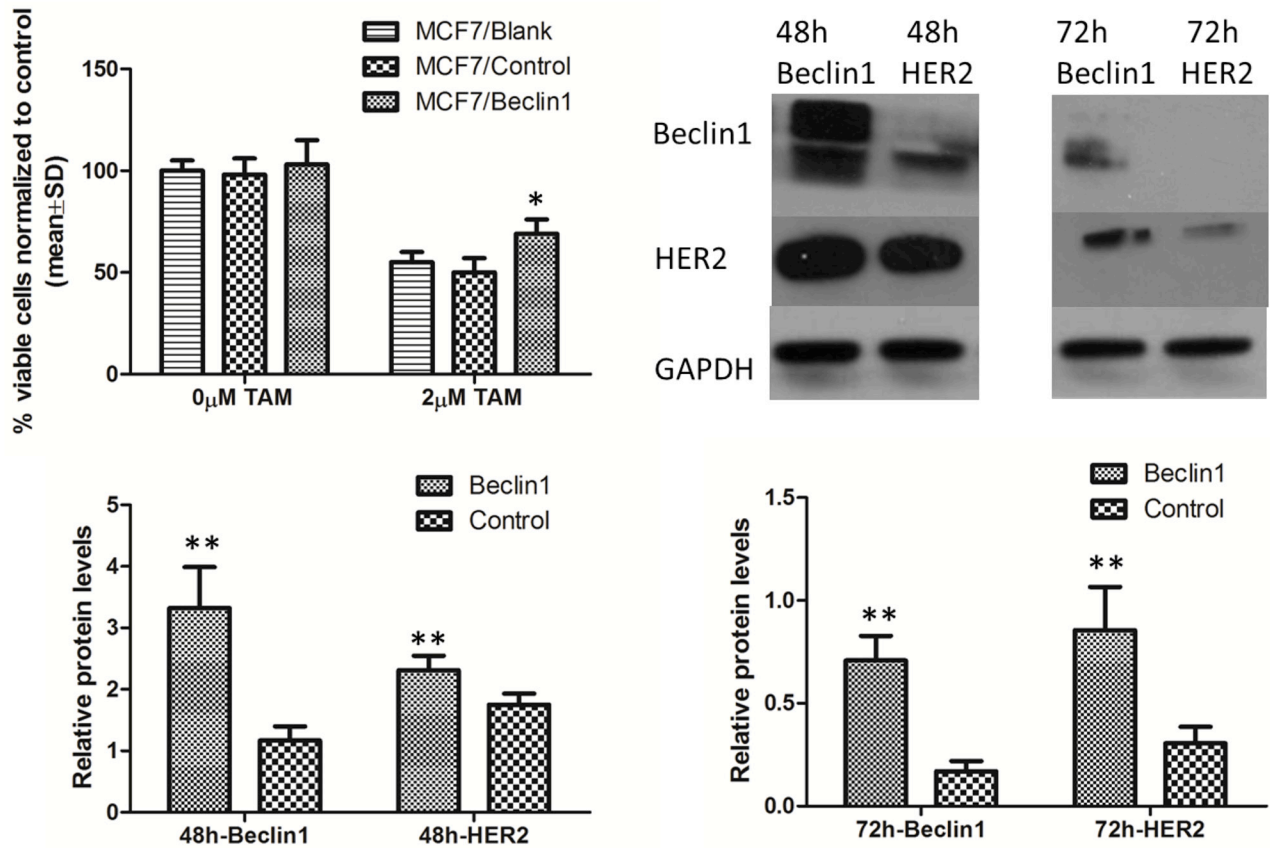
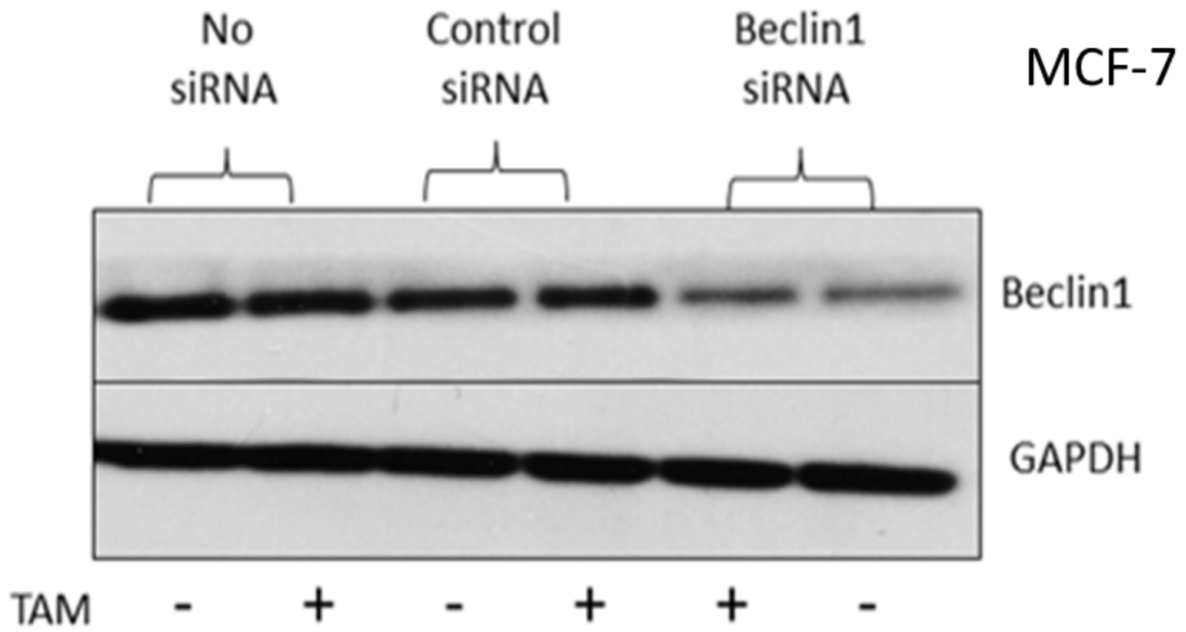


Lower Beclin 1 downregulates HER2 expression to enhance tamoxifen sensitivity and predicts a favorable outcome for ER positive breast cancer

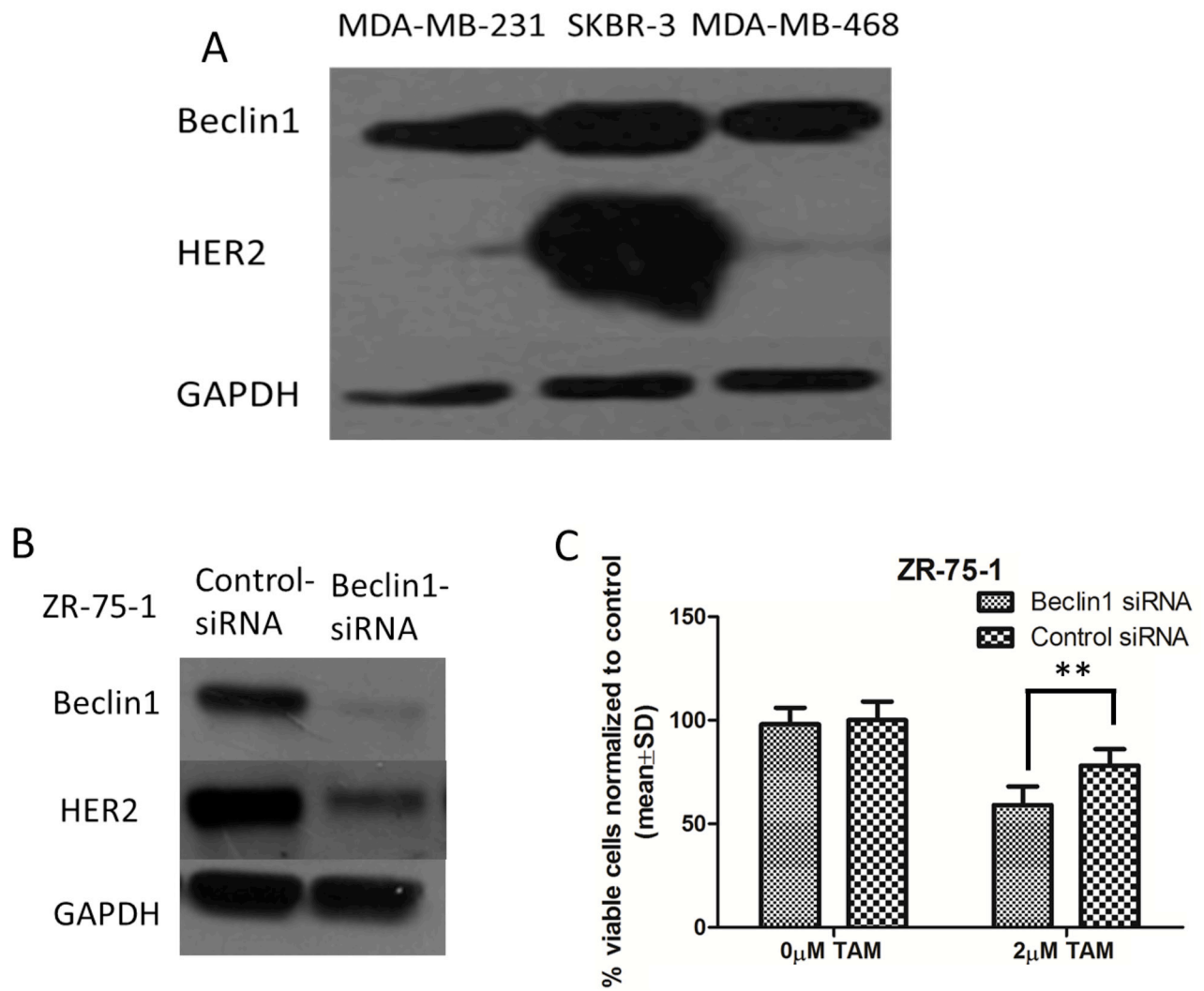
ADDITIONAL FILES



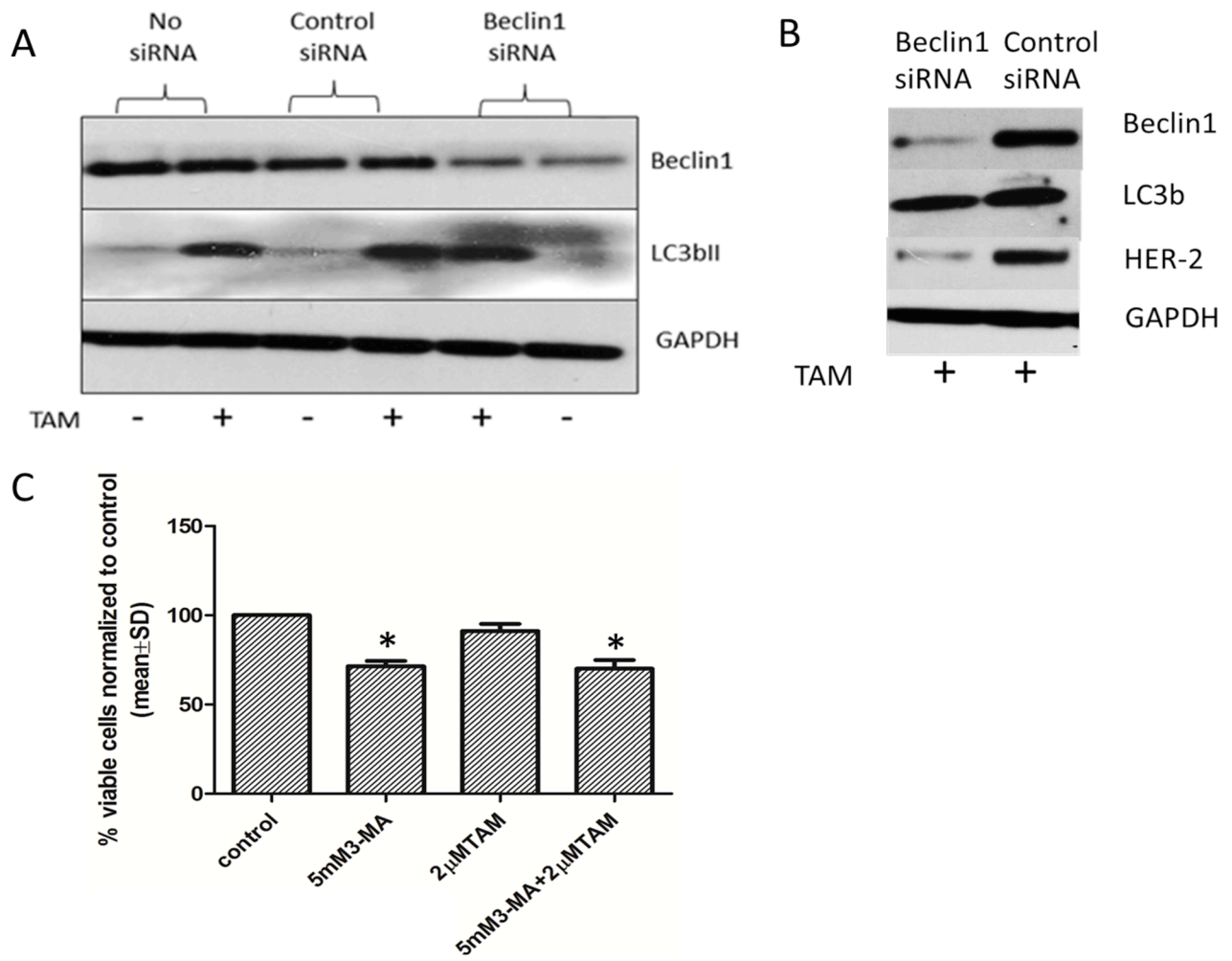
Additional File 1: Beclin 1 over-expression led to increased HER2 expression and enhanced cell proliferation of MCF-7 under TAM treatment.



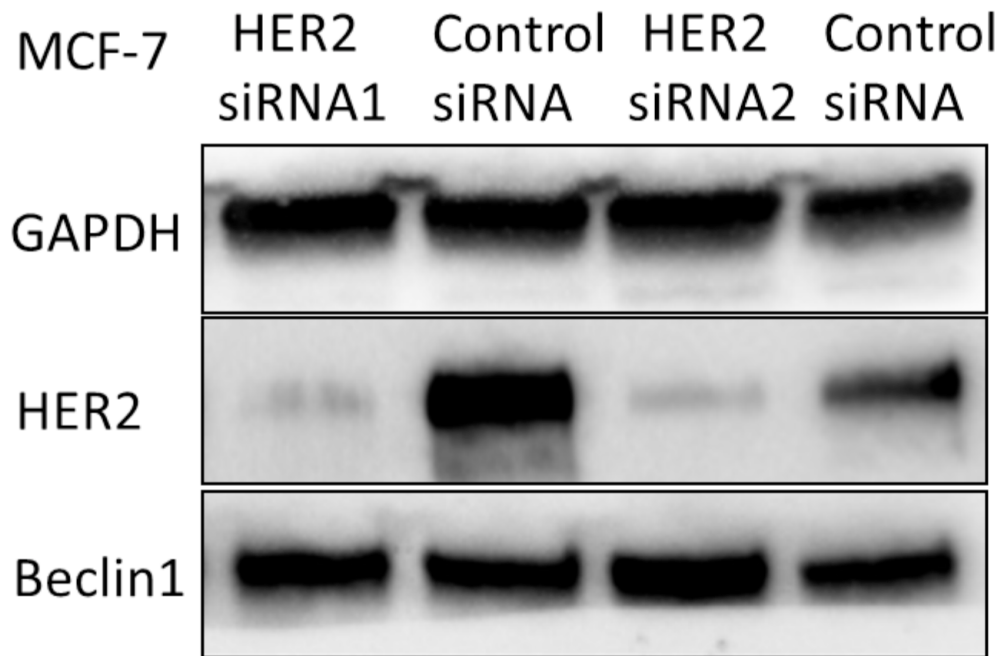
Additional File 2: The expression of Beclin1 in breast cancer cell MCF7 after treated with TAM for 48hrs.



Additional File 3: Role of Beclin 1 in different breast cancer cell lines.



Additional File 4: Role of Beclin1 in TAM induced autophagy of MCF-7.



Additional File 5: The expression of Beclin 1 in breast cancer cell MCF-7 after HER2 down-regulation.