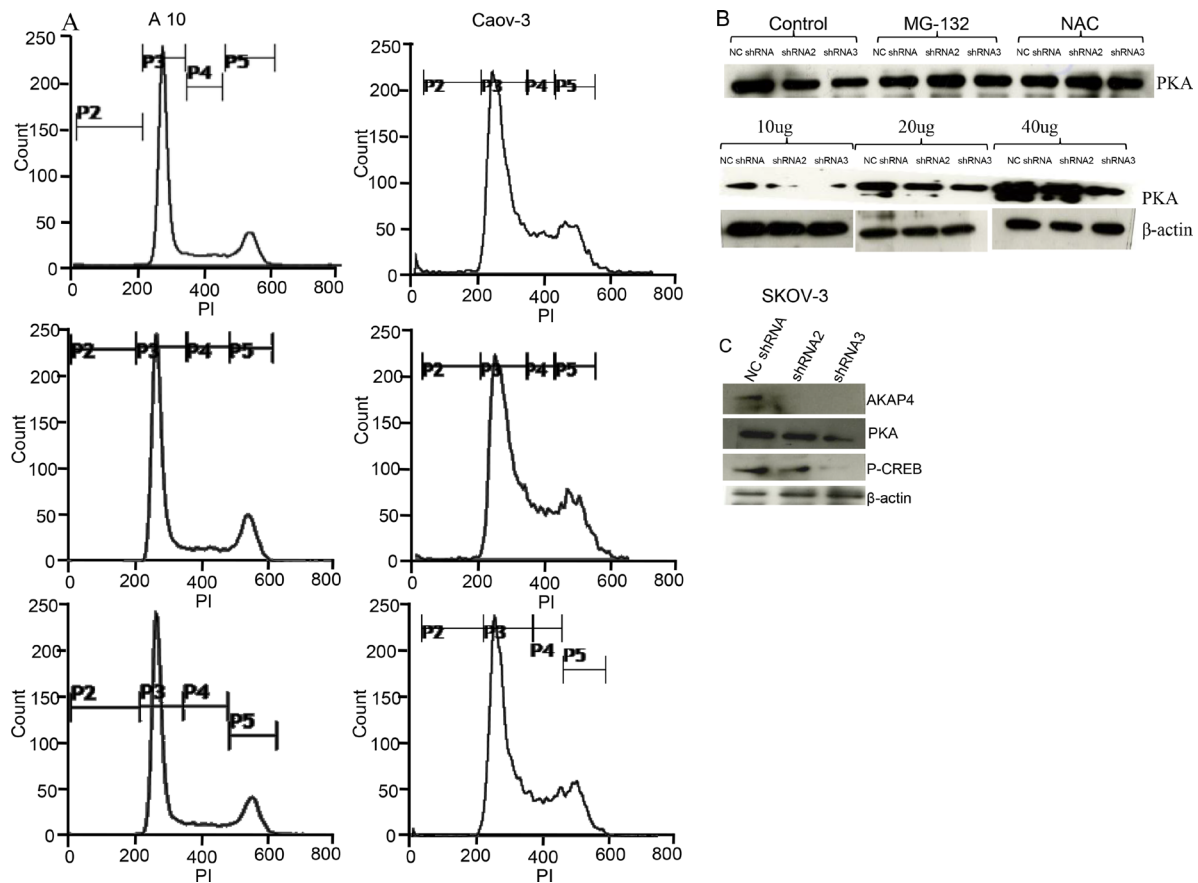
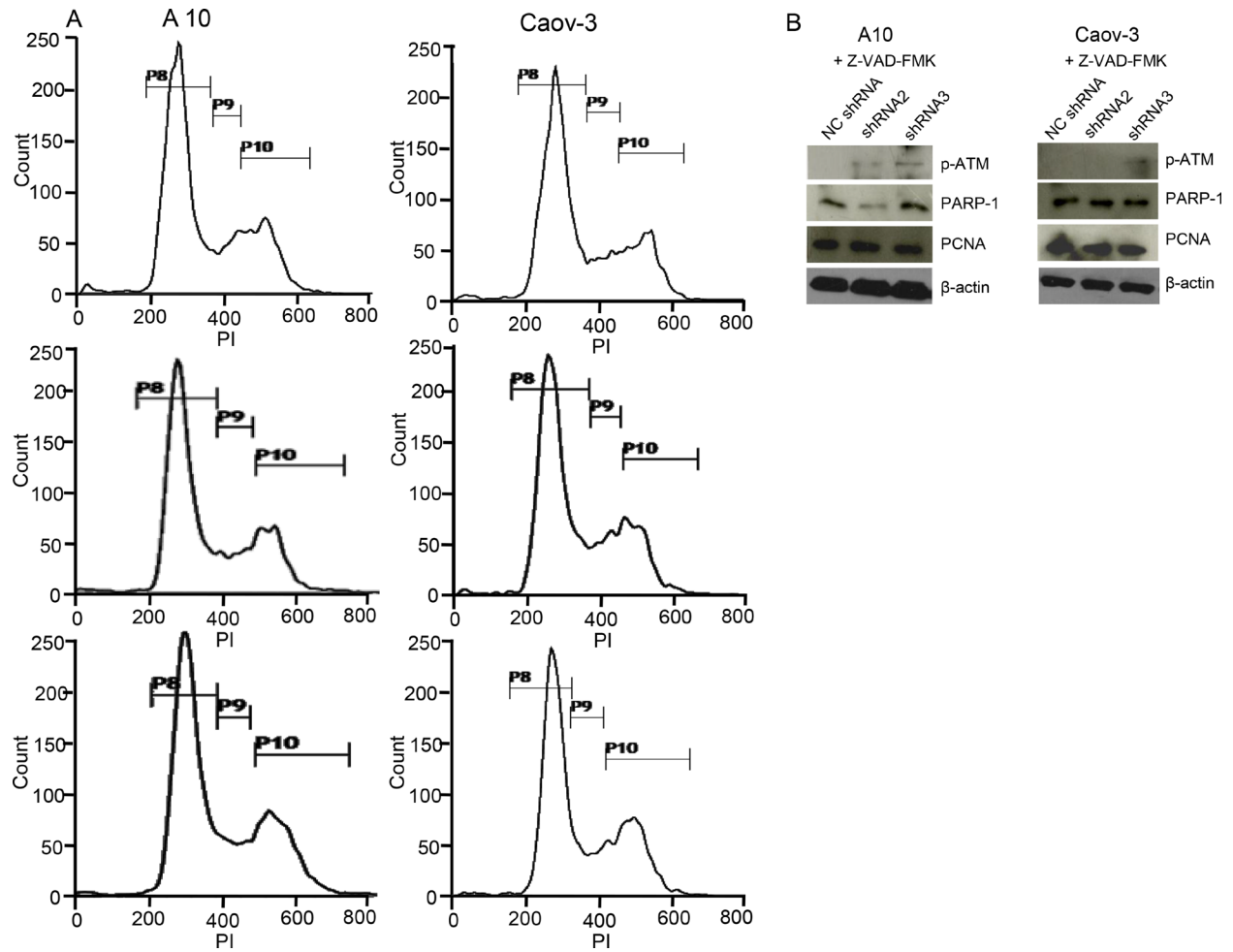


Role of A-Kinase anchor protein (AKAP4) in growth and survival of ovarian cancer cells

Supplementary Materials



Supplementary Figure 1: (A) Histogram analysis after PI staining shows cell cycle rescue after NAC treatment in A10 and Caov-3 cells at 48 hr. (B) Western blot shows PKA expression after various treatments (shRNA, shRNA+MG-132 and shRNA+NAC) and PKA expression at different concentration of cell lysate (10 μ g, 20 μ g and 40 μ g) in Caov-3 at 48 hr. (C) Western blot shows downregulation of AKAP4, PKA and p-CREB in SKOV-3 cells. β -actin serves as loading control. The data shown as mean \pm standard error of the mean (SEM) of three independent experiments. * $P < 0.05$; ** $P < 0.01$.



Supplementary Figure 2: (A) Histogram analysis after PI staining shows cell cycle rescue after caspase inhibitor (Z-VAD-FMK, 40 μ m) pre-treatment in A10 and Caov-3 cells at 48 hr. (B) Western blot shows expression of PCNA, PARP1 and p-ATM after caspase inhibition. β -actin serves as loading control.