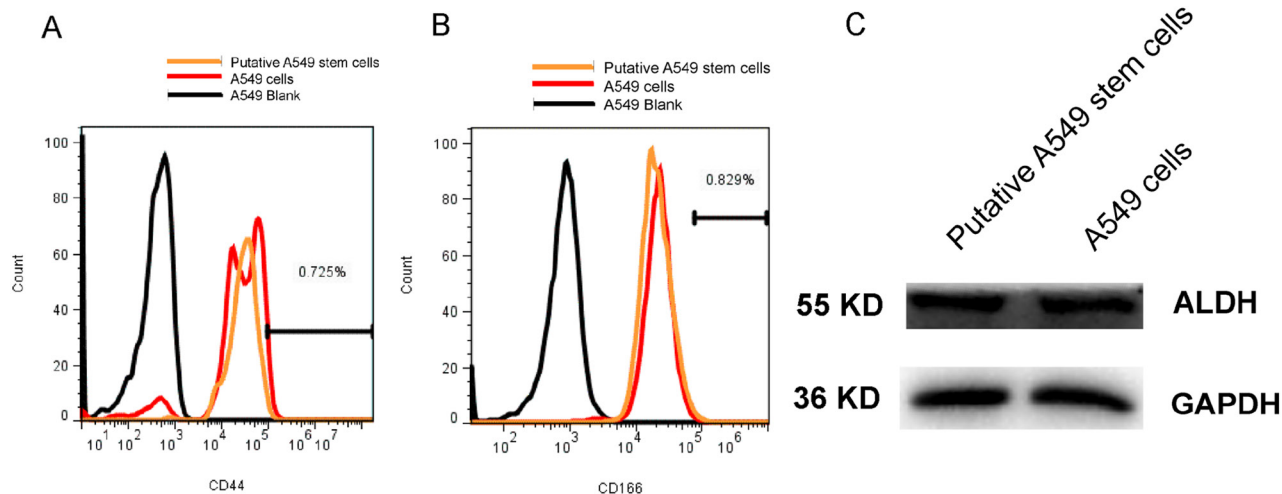
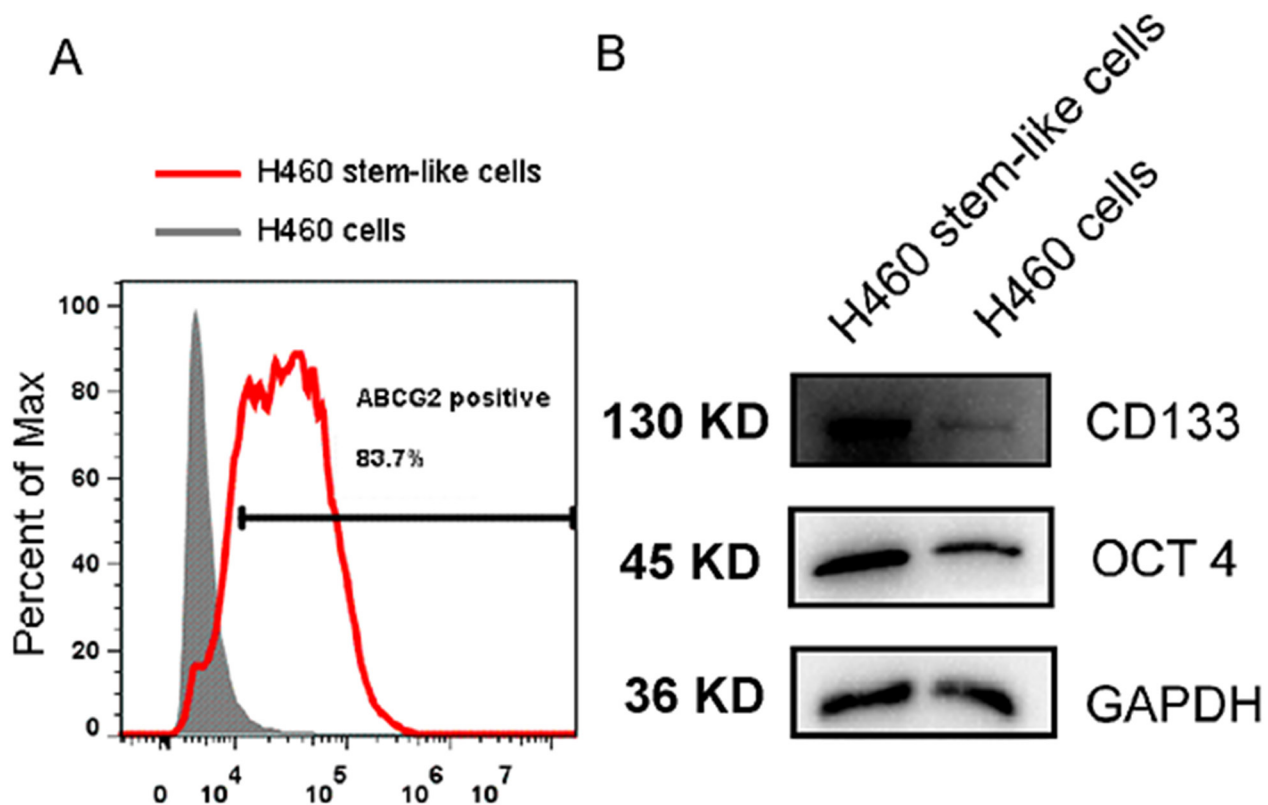


A combination of valproic acid sodium salt, CHIR99021, E-616452, tranylcypromine, and 3-Deazaneplanocin A causes stem cell-like characteristics in cancer cells

SUPPLEMENTARY MATERIALS



Supplementary Figure 1: Relative protein expression of putative A549 stem cells and A549 cells. (A) CD44 protein expression in putative A549 stem cells and A549 cells examined with flow cytometry. (B) CD166 protein expression in putative A549 stem cells and A549 cells examined with flow cytometry. (C) Western blot result for ALDH protein in putative A549 stem cells and A549 cells.



Supplementary Figure 2: Relative stem-like features of H460 stem-like cells and H460 cells. (A) ABCG2 protein expression in H460 stem-like cells and H460 cells examined with flow cytometry. (B) Western blot results for CD133 and OCT4 expression levels in H460 stem-like cells and H460 cells.