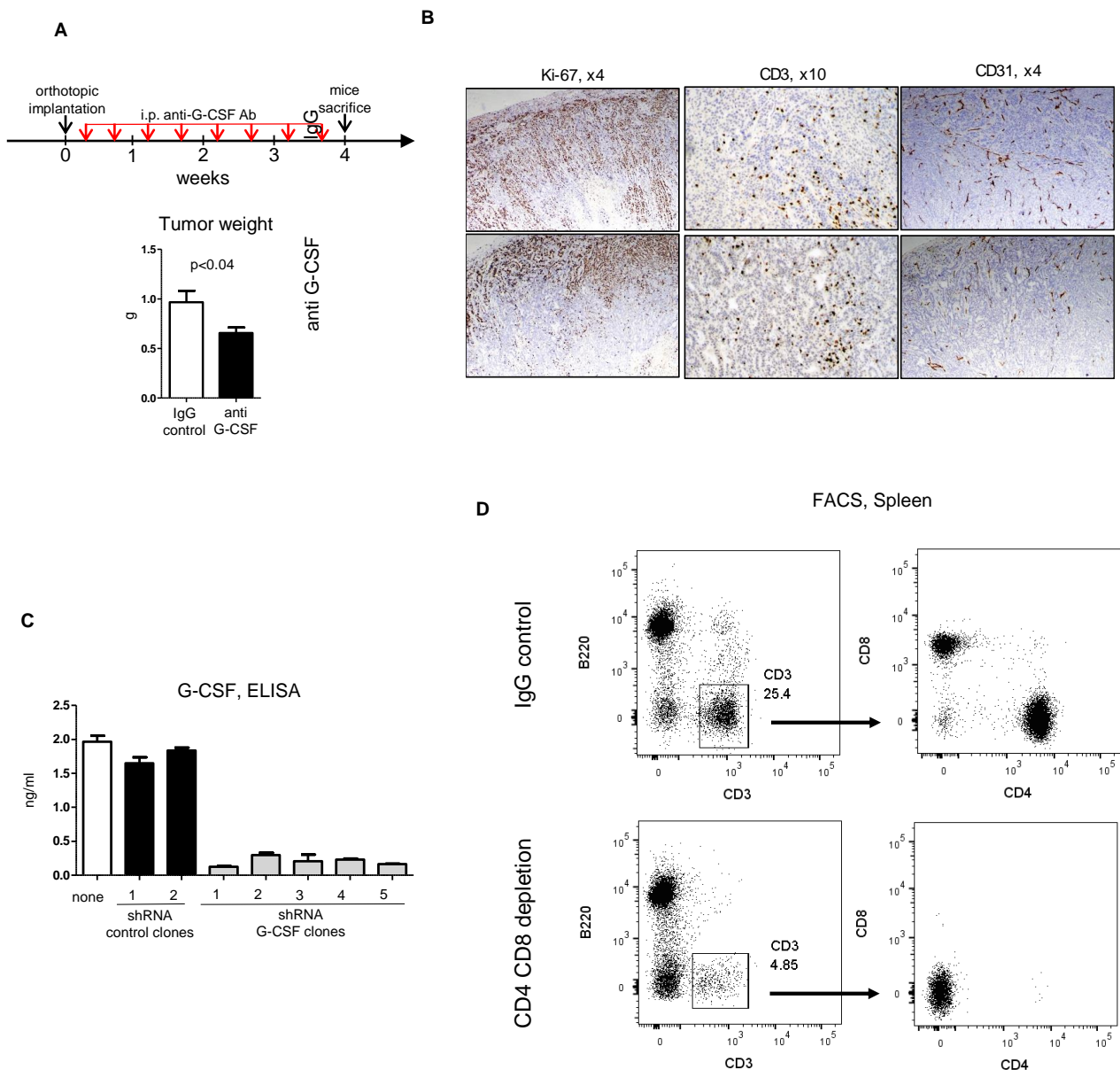


Supplementary Figure S1

A, Dendritic cells were differentiated for 5 days from bone marrow cells isolated from naïve Balb/c mice in presence of GM-CSF 20 ng/ml, IL4 10 ng/ml, then collected and incubated in a medium for 24 hr supplemented with 25% of conditioned medium from Kras/p48 or Kras/p48^{TGFβRII-KO} pancreas carcinoma cells. After incubation medium was collected and level of IL-10 was measured by ELISA. Secretion IL-10 by dendritic cells (**left**) and measurement of IL-10 in cultured medium (DMEM, 10%FBS) and conditioned media of tumor cells (**right**).

B, Dendritic cells (DC) were differentiated from bone marrow cells isolated from naïve c57bl/6 mice in presence of GM-CSF 20 ng/ml, IL4 10 ng/ml for 5 days, then mixed with T cells in ratio 1:10 (1×10^5 T cells + 10^4 DC). Additionally these cells were mixed with CD11b cells isolated from tumor tissue Kras/p48 or Kras/p48^{TGFβRII-KO} mice in different ratio. * -- $p < 0.05$.

Data correspond to the mean \pm SEM of two individual mice from two experiments.



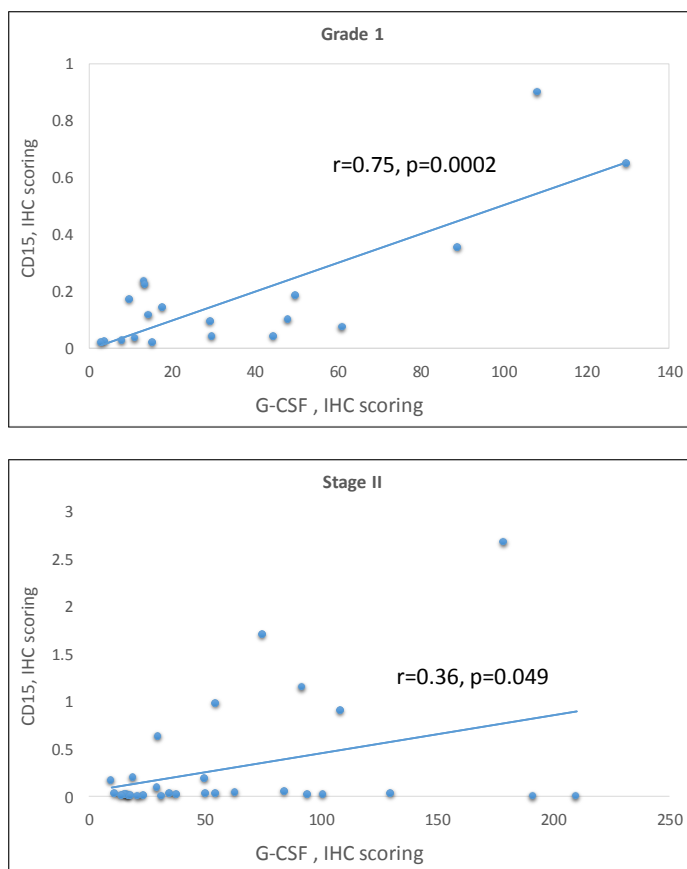
Supplementary Figure S2

A, Schematic of mouse treatment with anti G-CSF Ab (10 ug/mouse, MAB414) and tumor weight at 4th weeks after cell implantation.

B, IHC for Ki-67, CD3 and CD31 of tumor tissue isolated from mice treated with IgG (control group, top row) and mice treated with anti G-CSF (bottom row) on 4th weeks after tumor implantation.

C, Detection of G-CSF by ELISA (R&D System, Inc) secretion after using shRNA approach. Pancreas carcinoma cell lines were cultured in 6 wells plate in 3 ml of DMEM/10% FBS for 24 hr. Level of G-CSF was measured in conditioned medium, n=3.

D, FACS analysis of spleen to control purity of depletion of CD4 and CD8 cells



Supplementary Figure S3

Correlation analysis of human TMA between CD15 and G-CSF scoring.