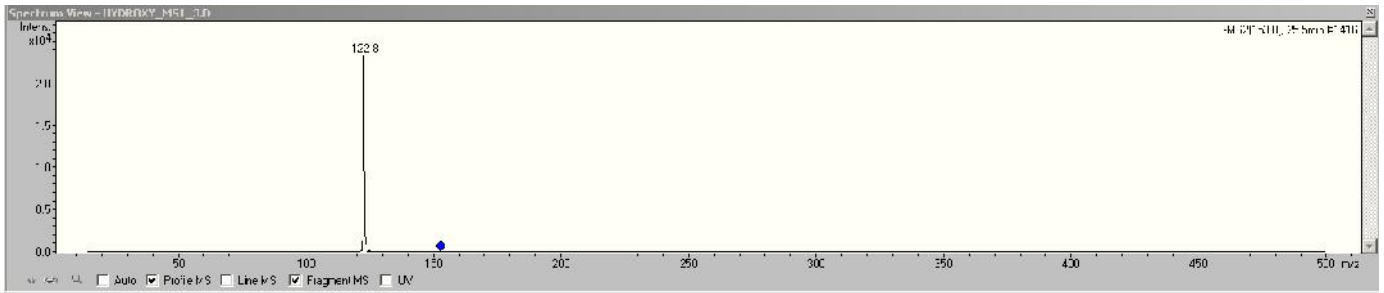


## S2 File. LC-MS conditions.

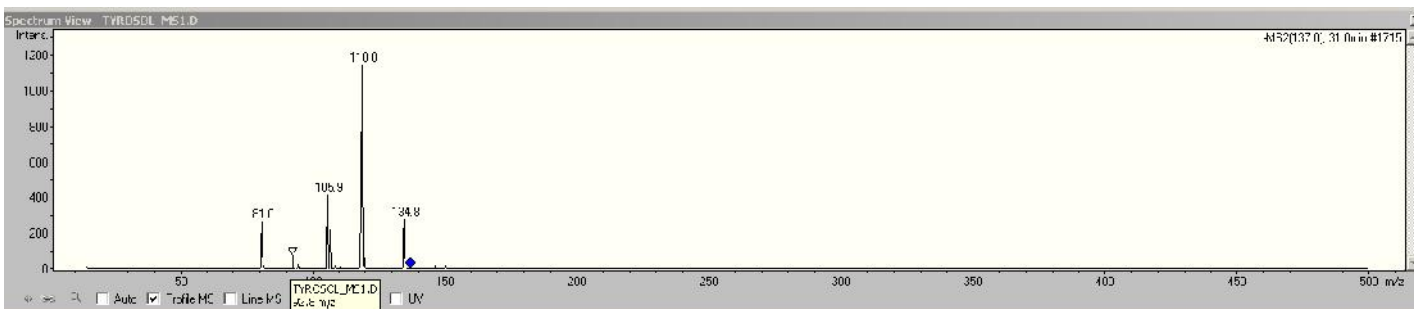
LC conditions same as HPLC condition.

MS conditions:

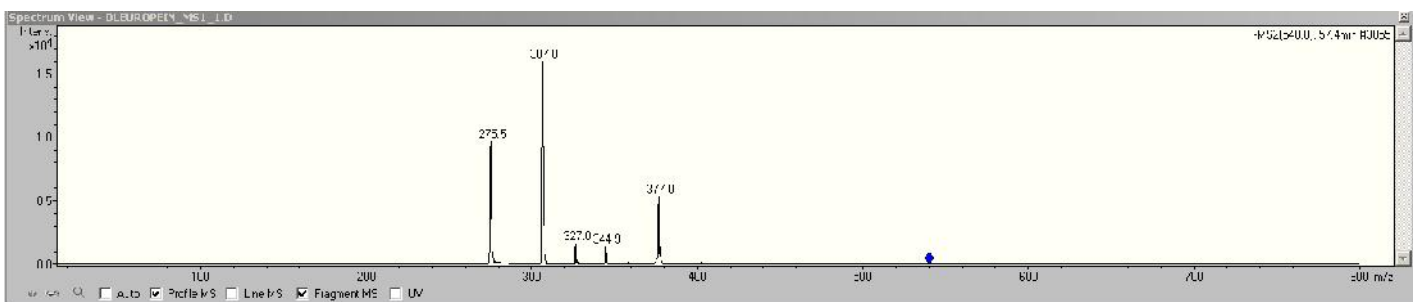
1. Hydroxytyrosol = negative mode, scan between  $m/z$  15-500, target ion at  $m/z$  153. MS/MS 153. Other peaks available = 122.8



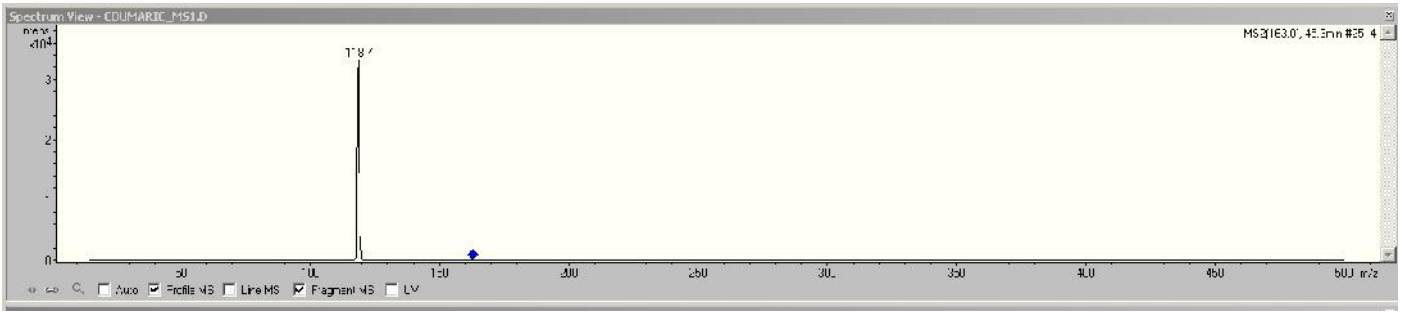
2. Tyrosol = negative mode, scan between  $m/z$  15-500, target ion at  $m/z$  137. MS/MS 137. Other peaks available = 118.8, 105.9, 92.3, 81



3. Oleuropein = negative mode, scan between  $m/z$  15-800, target ion at  $m/z$  540. MS/MS 540. Other peaks available = 377 (main peaks from journal article), 344.9, 327, 307, 275.



4. P-coumaric acid = negative mode, scan between  $m/z$  15-500, target ion at  $m/z$  164. MS/MS 164. Other peaks available = 118.7.



5. Ferrulic acid = negative mode, scan between m/z 15-500, target ion at m/z 193. MS/MS 193. Other peaks available = 177.7, 148.9 and 134.2.

