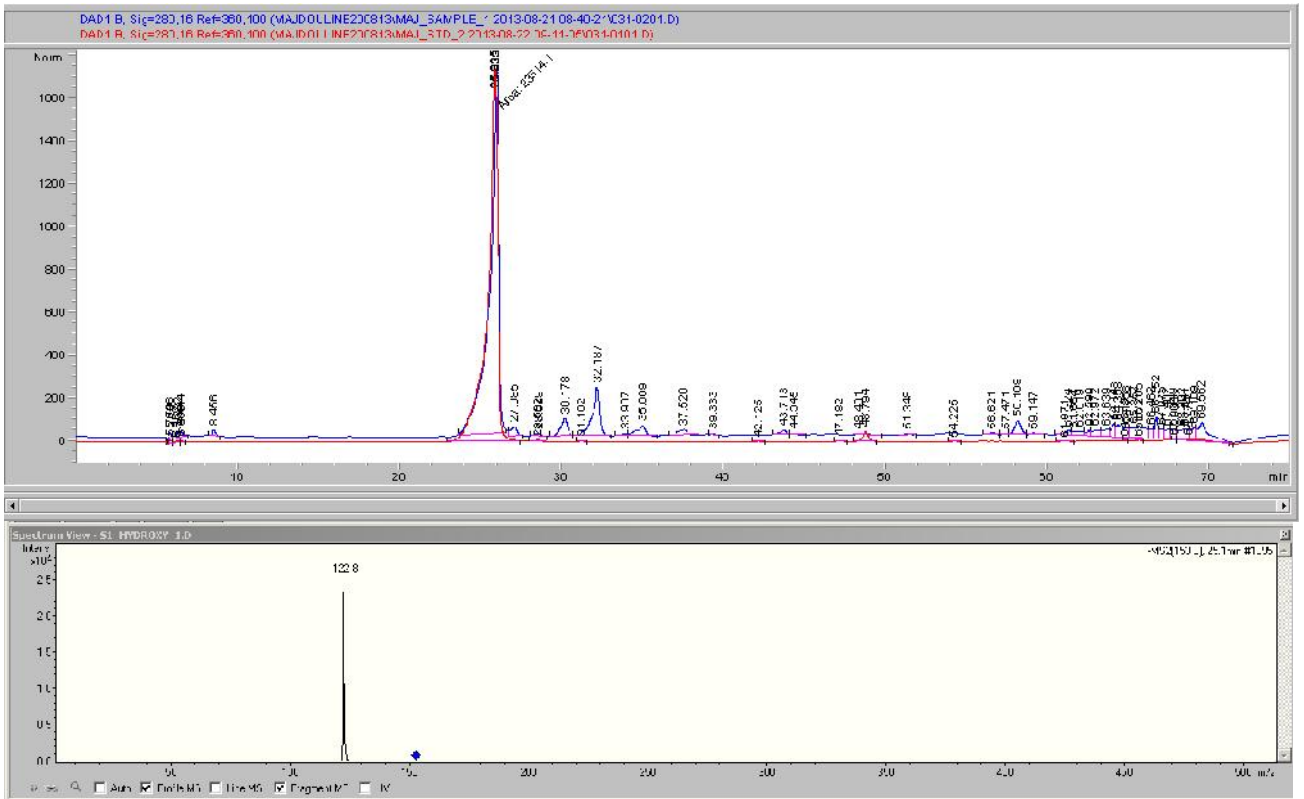
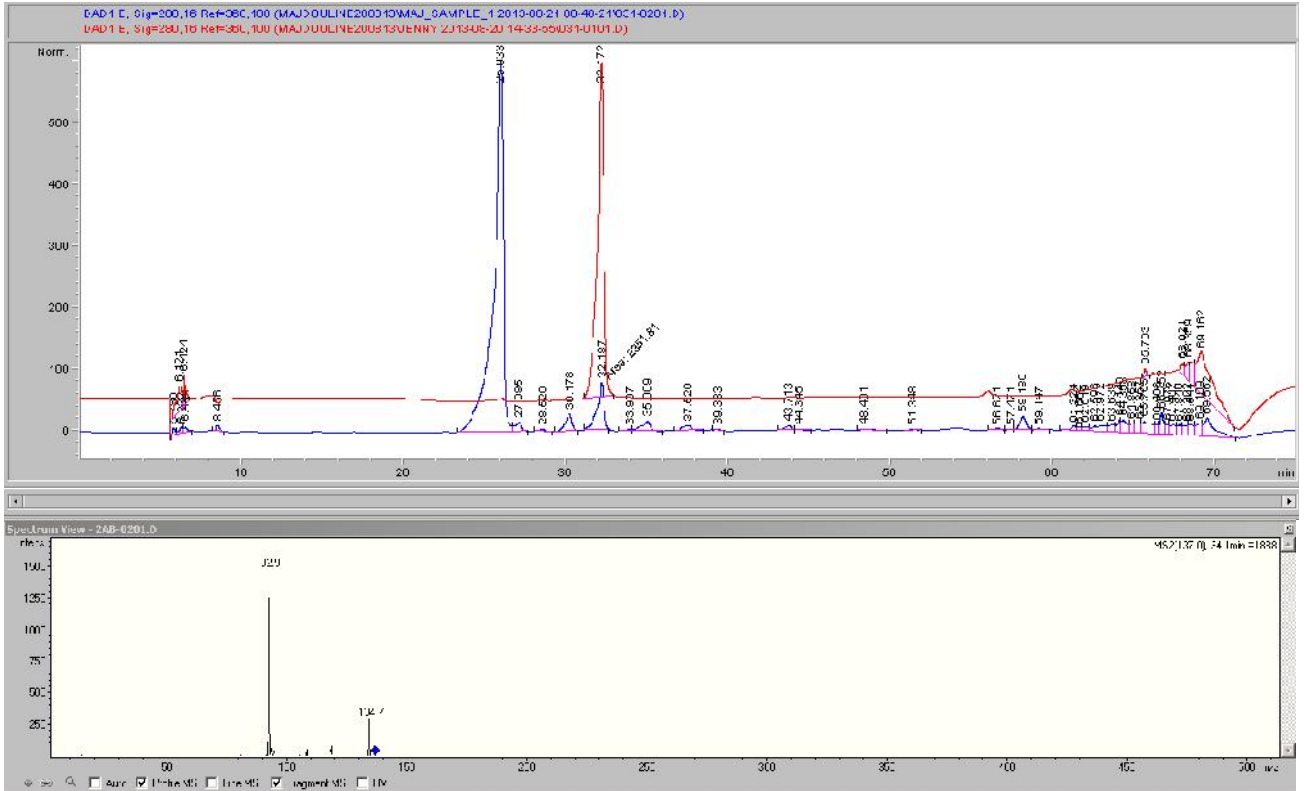


S3 File. HPLC and MS chromatogram of OMW samples.

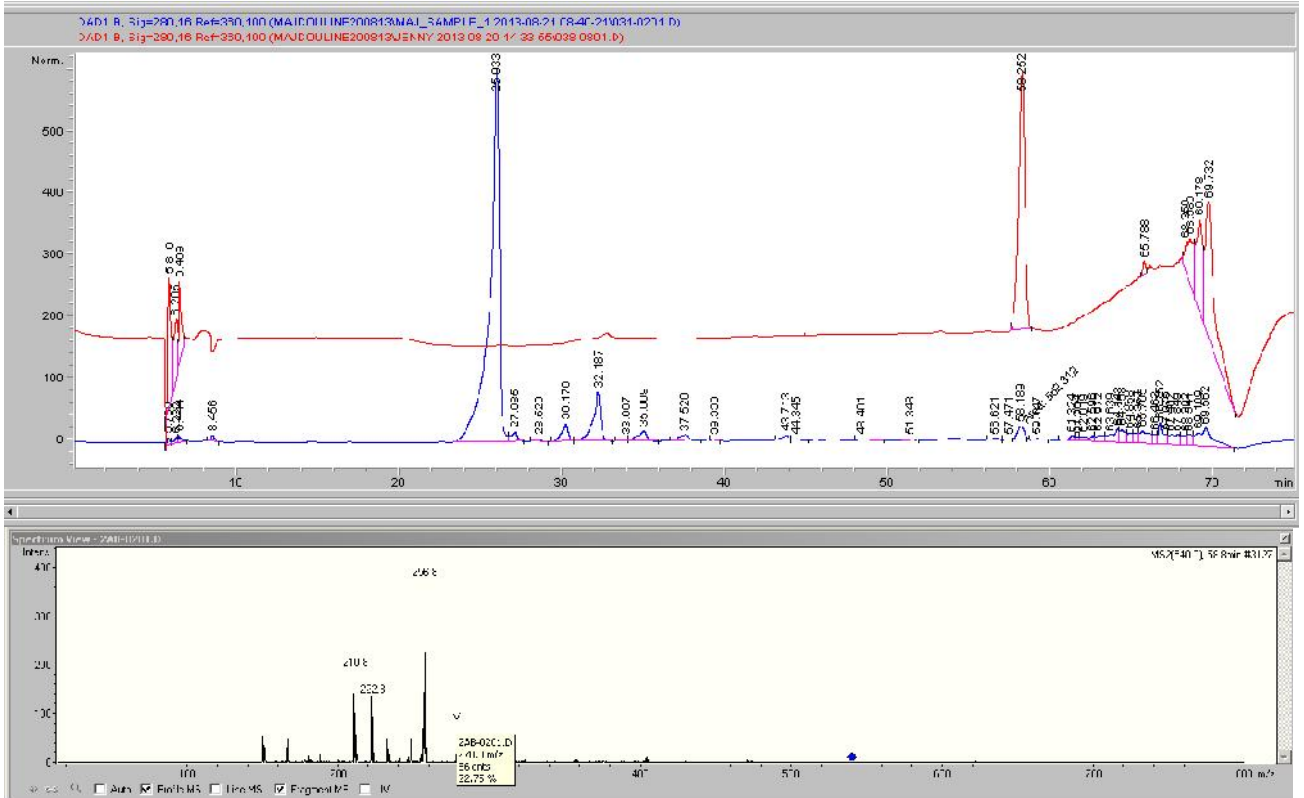
SI_hydroxytyrosol (area=23514.1)



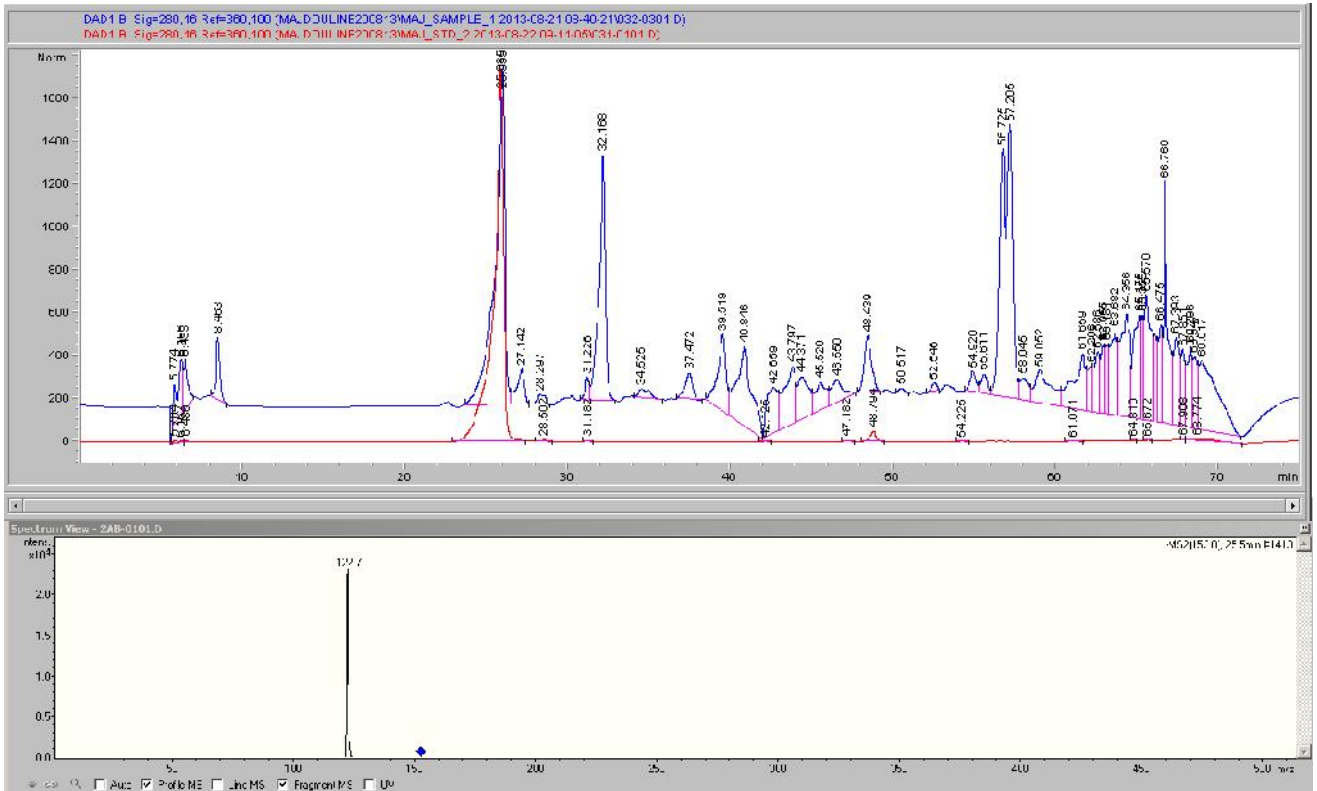
S1_Tyrosol (area=2351.81)



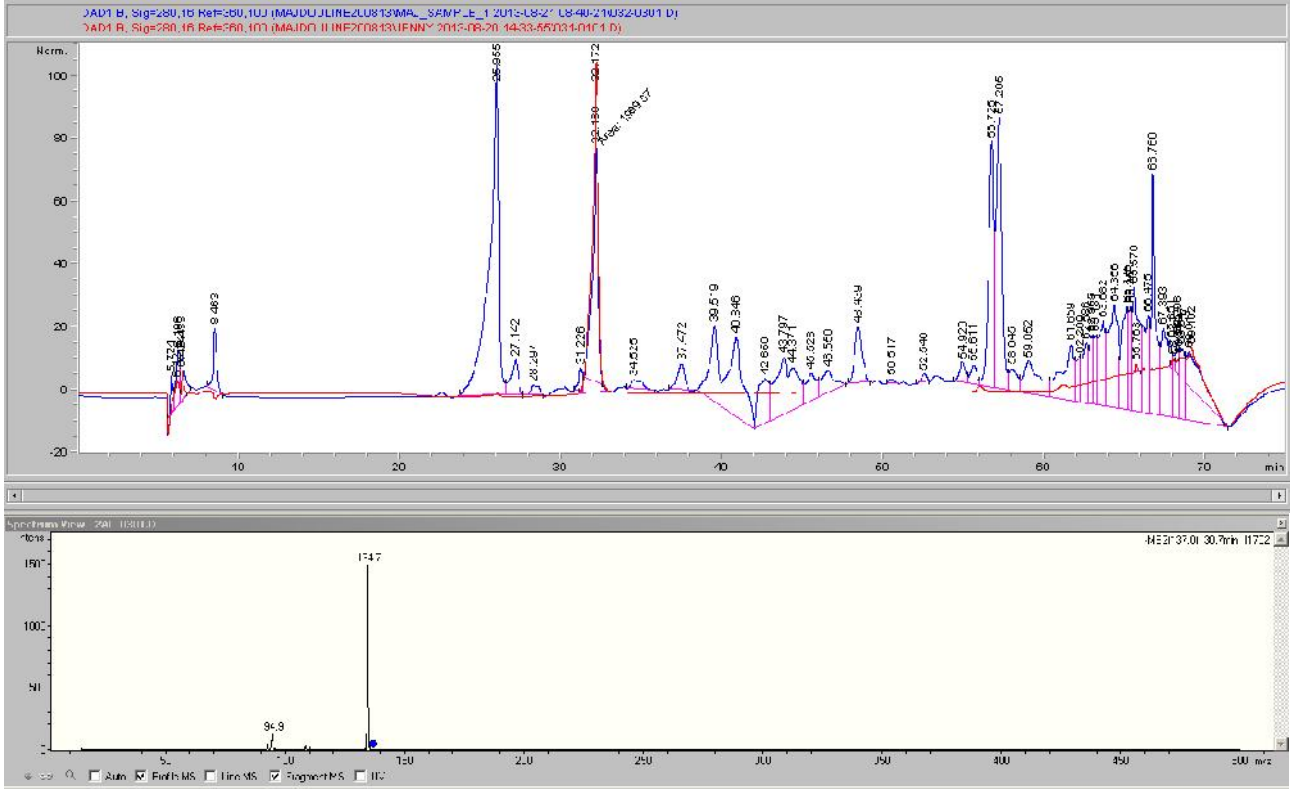
S1_Oleuropein (area=562.312)



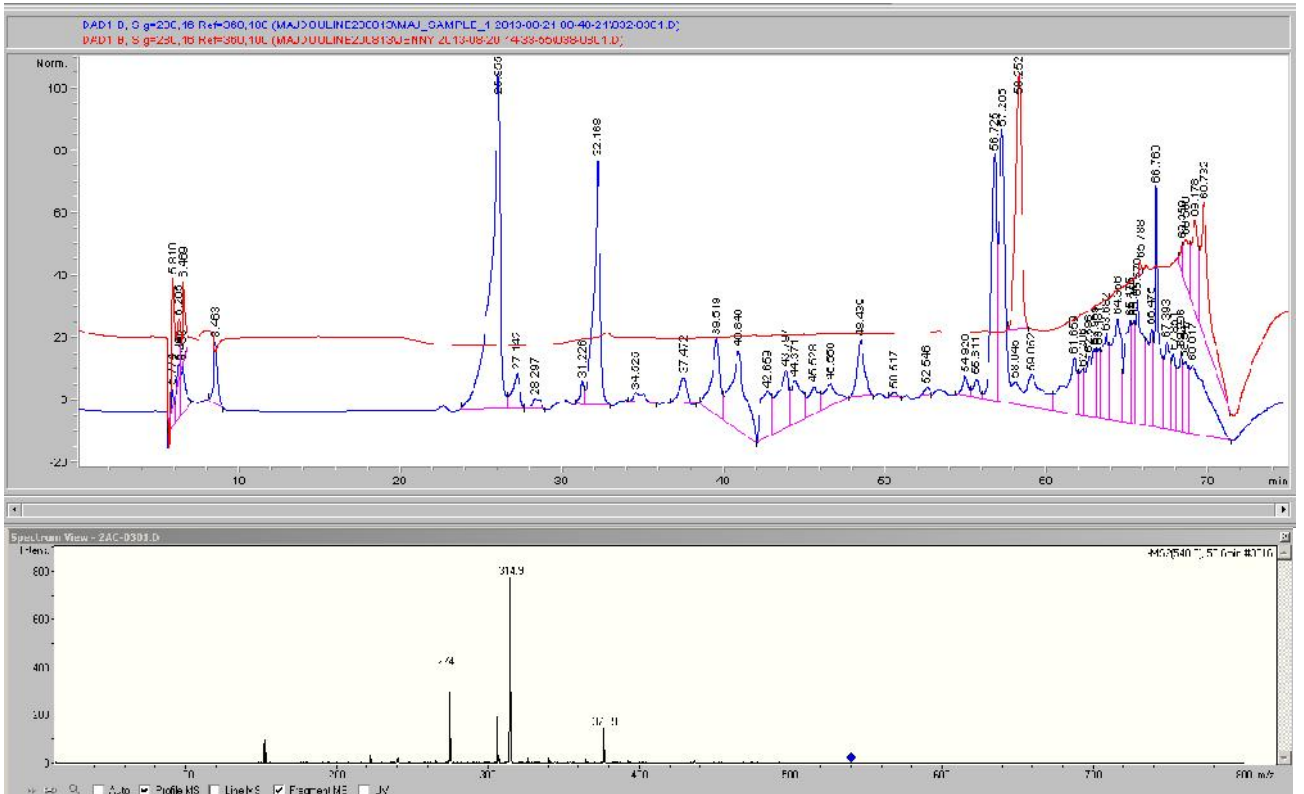
S2_Hydroxytyrosol (area=4024.34)



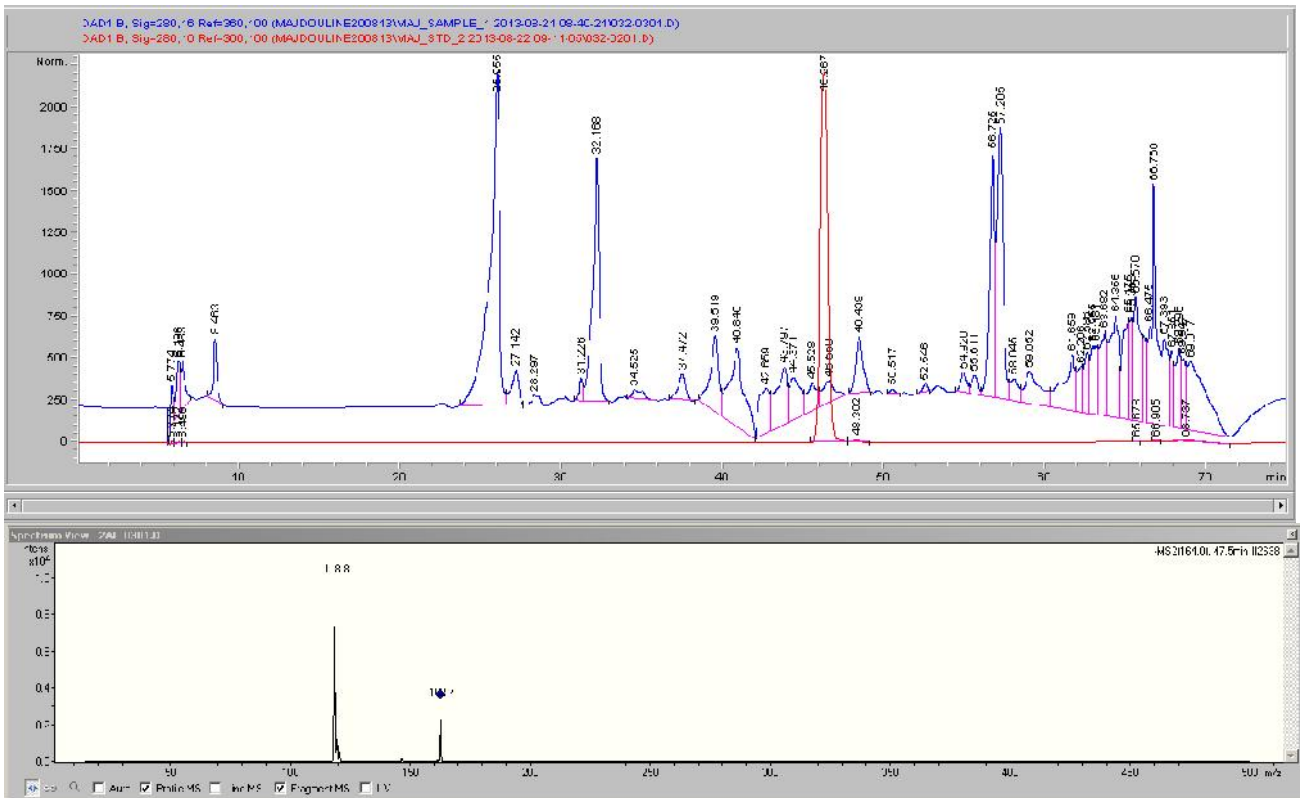
S2_Tyrosol (area=1999.67)



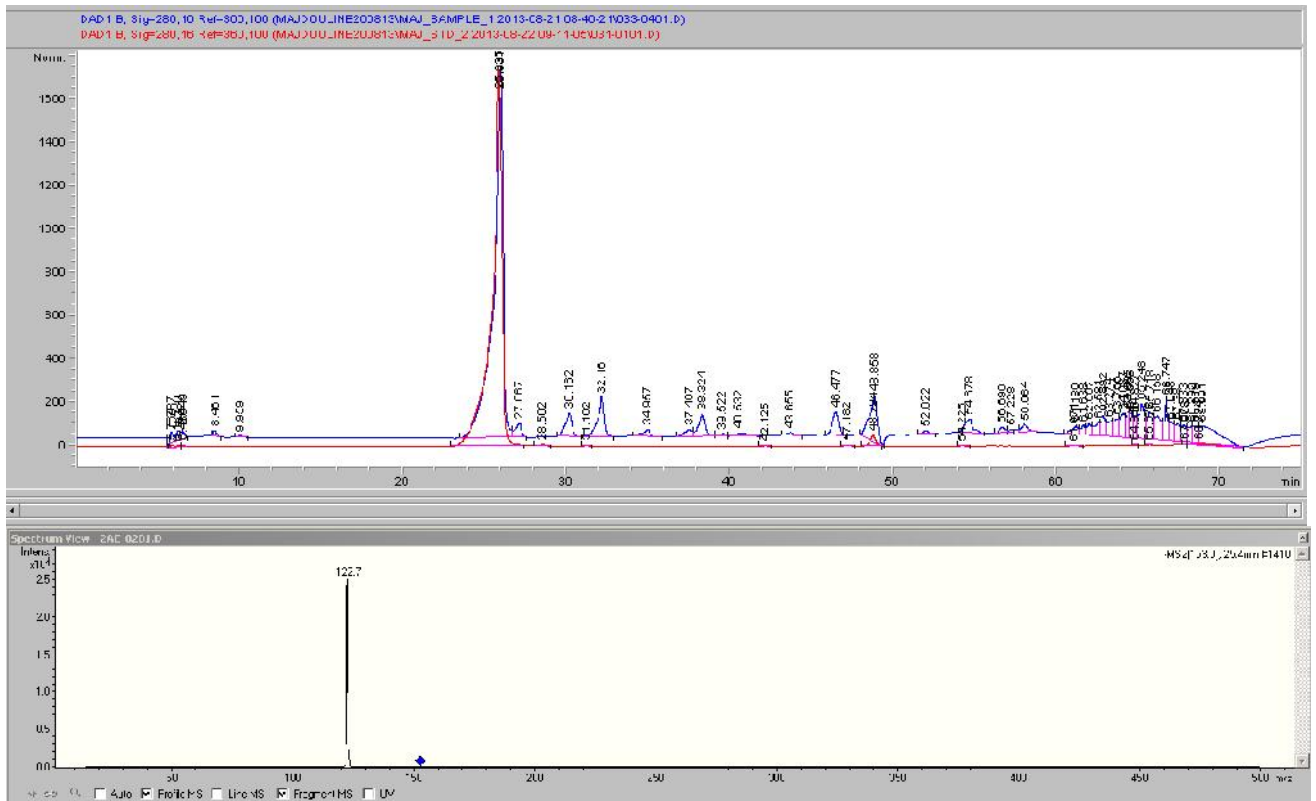
S2_Oleuropein (area=81.8678)



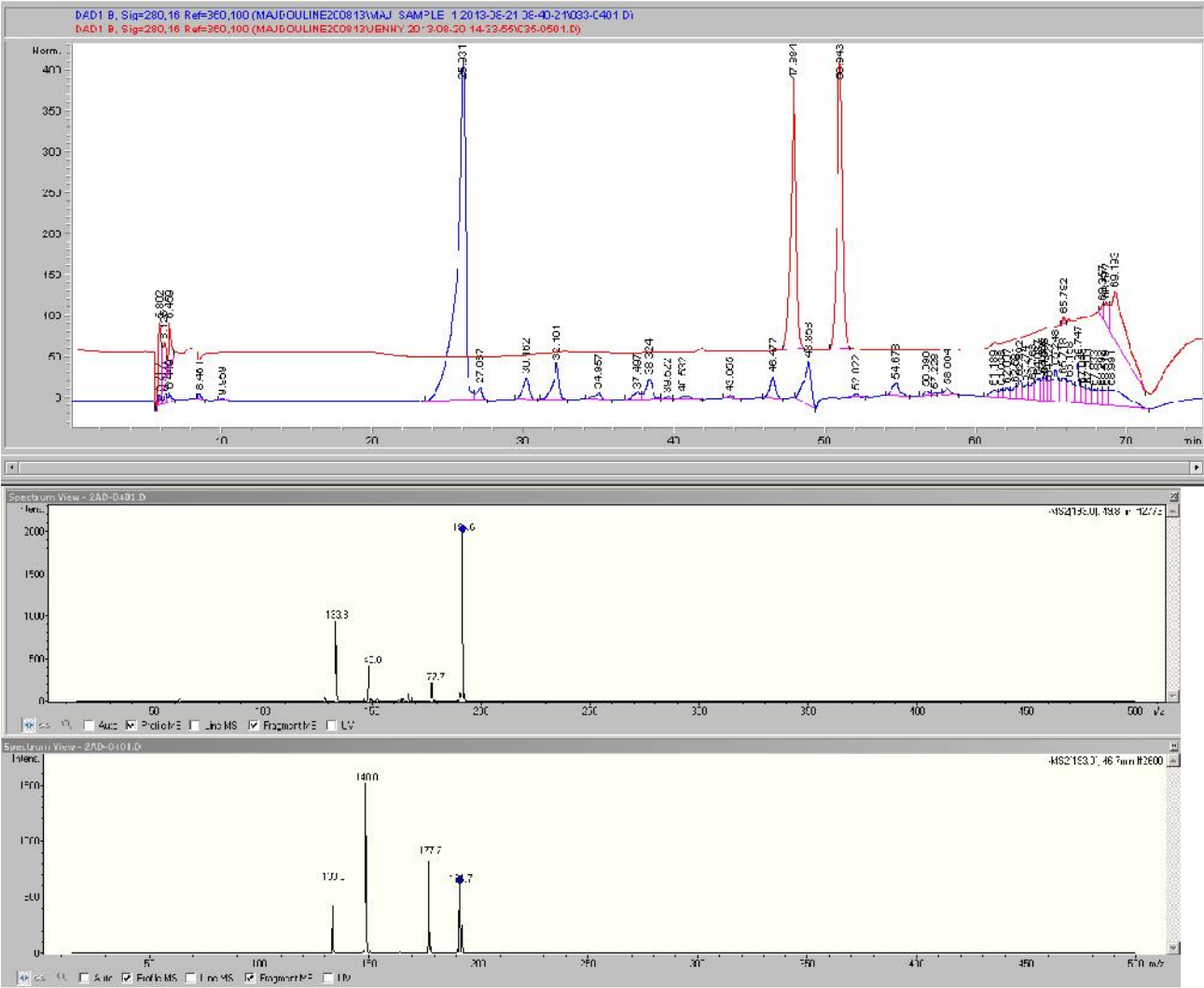
S2_P-coumaric (area= 500.266)



S3_hydroxytyrosol (area=15222.8)

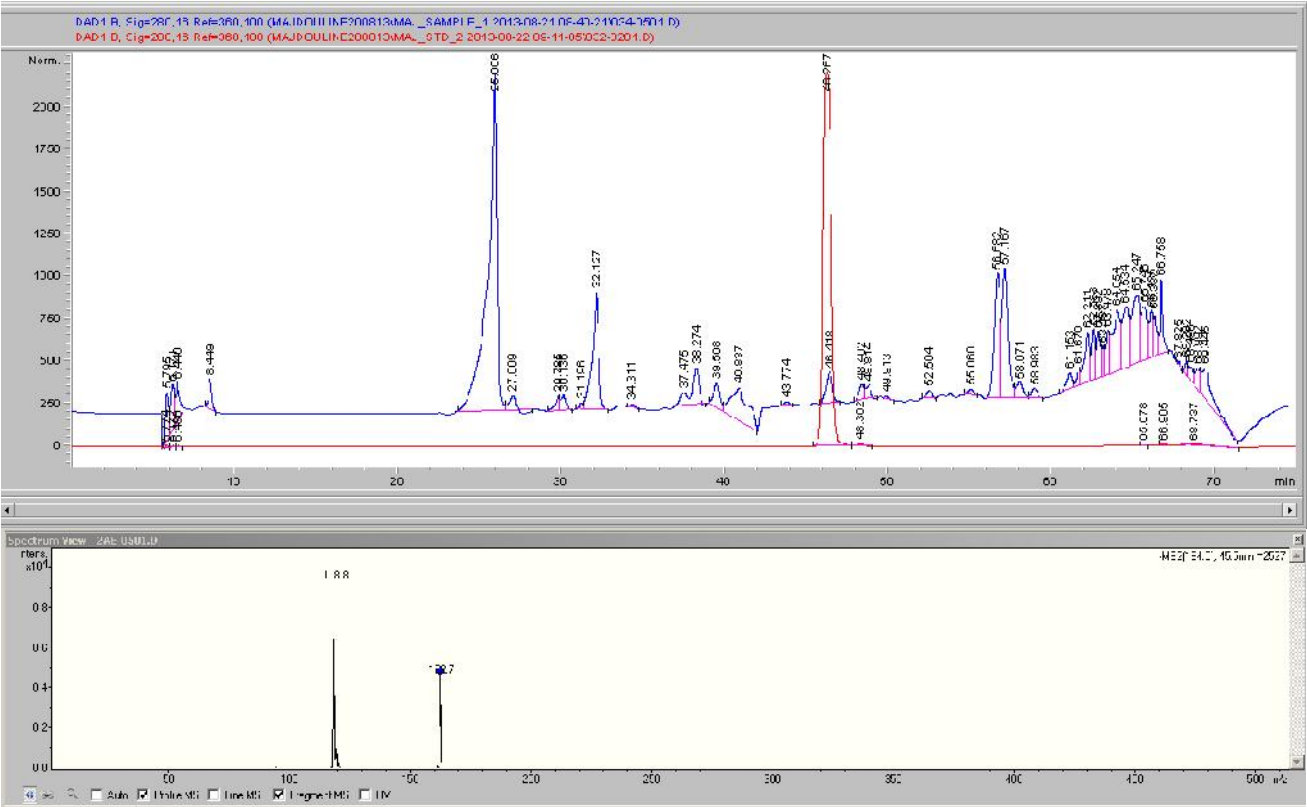


S3_Ferrulic acid (area=1855.89, 131.663)

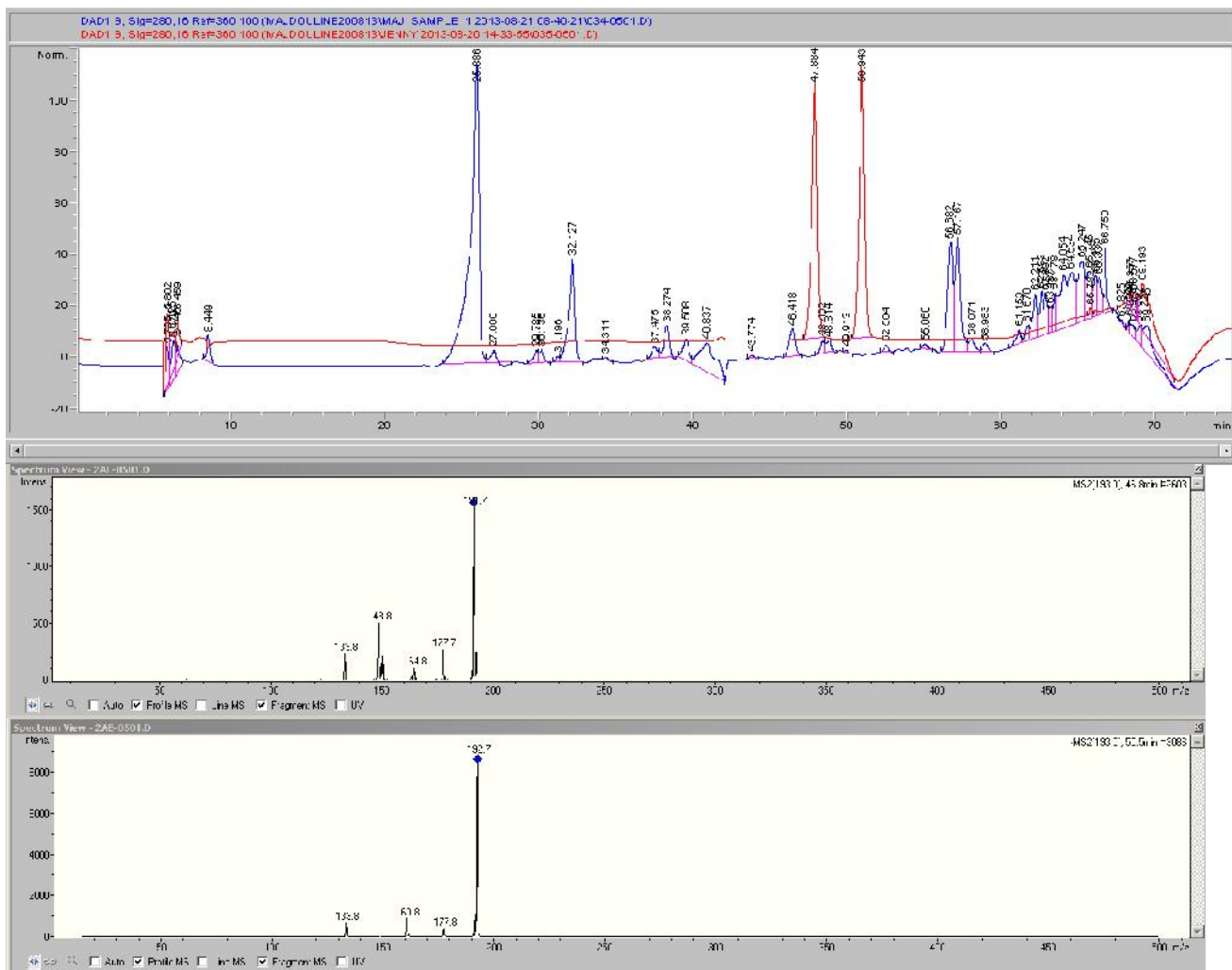


S3_Oleuropein (area=132.767)

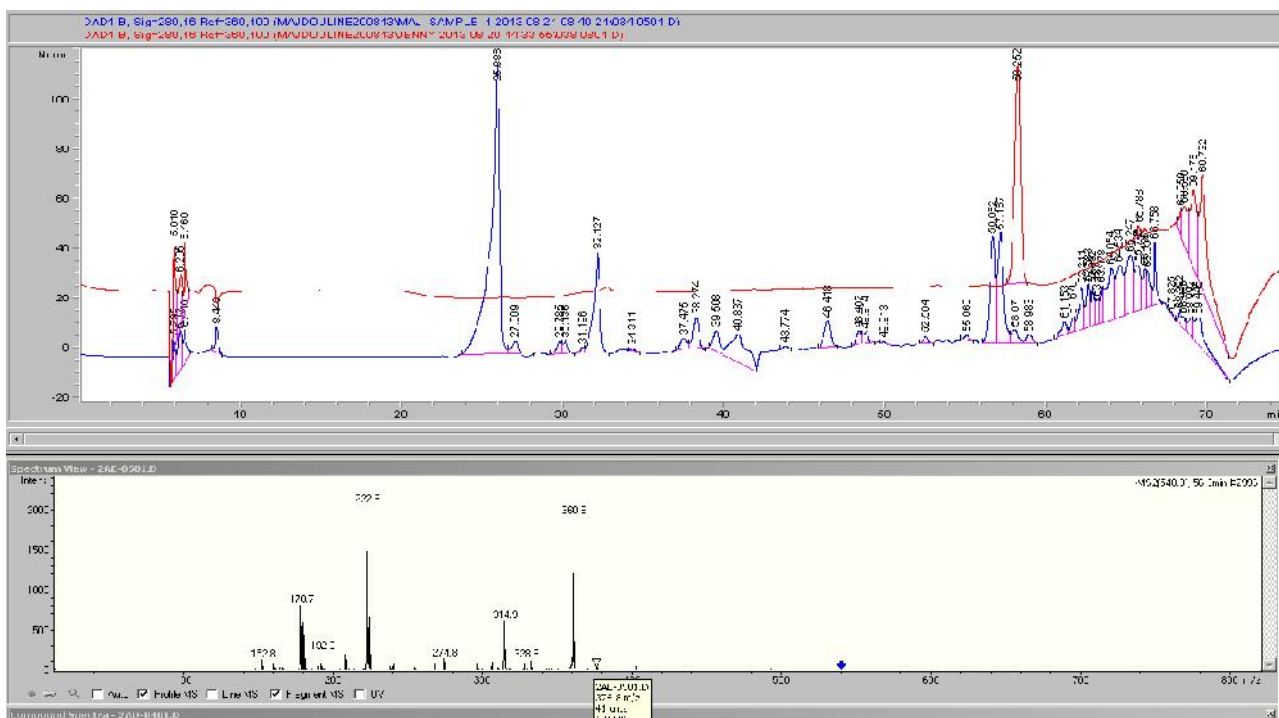
S4_P-coumaric acid (area=251.832)



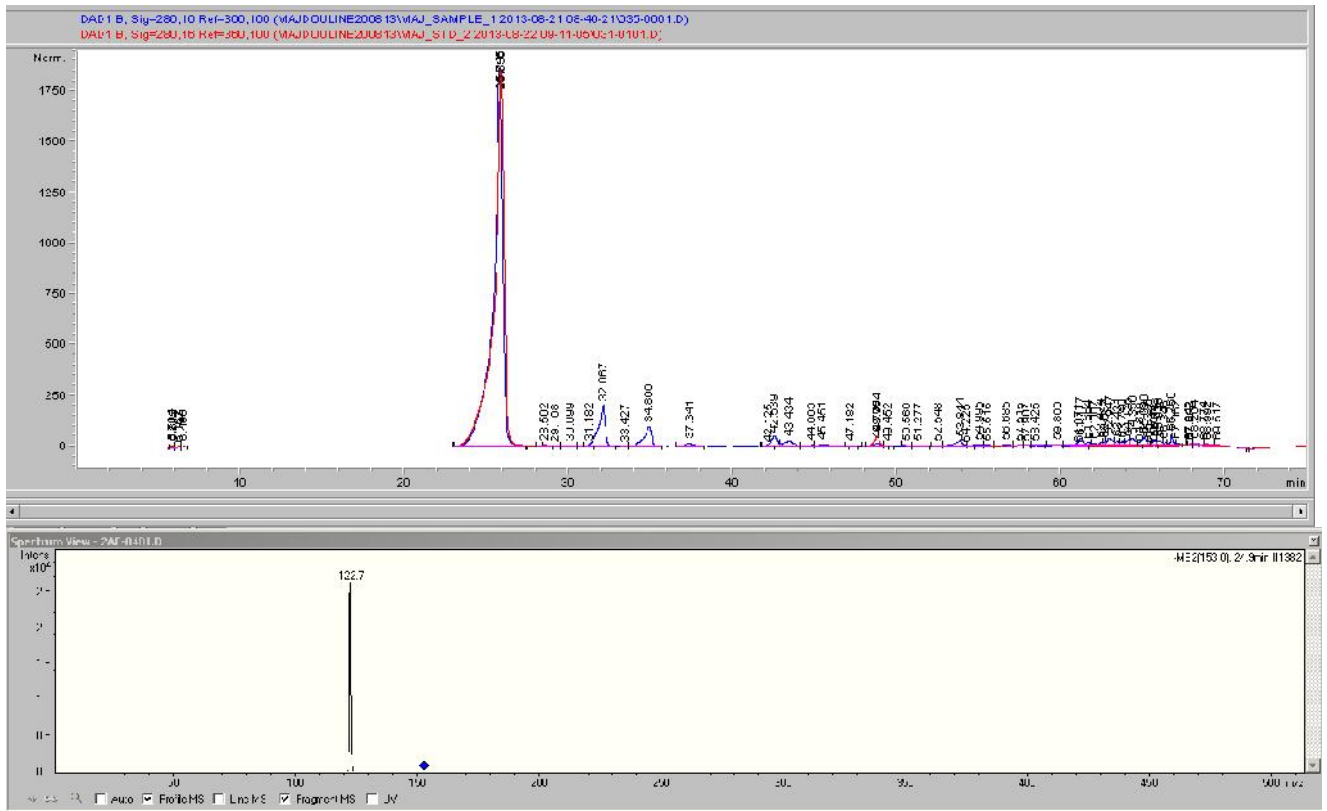
S4_Ferrulic acid (area=257.220, 36.74)



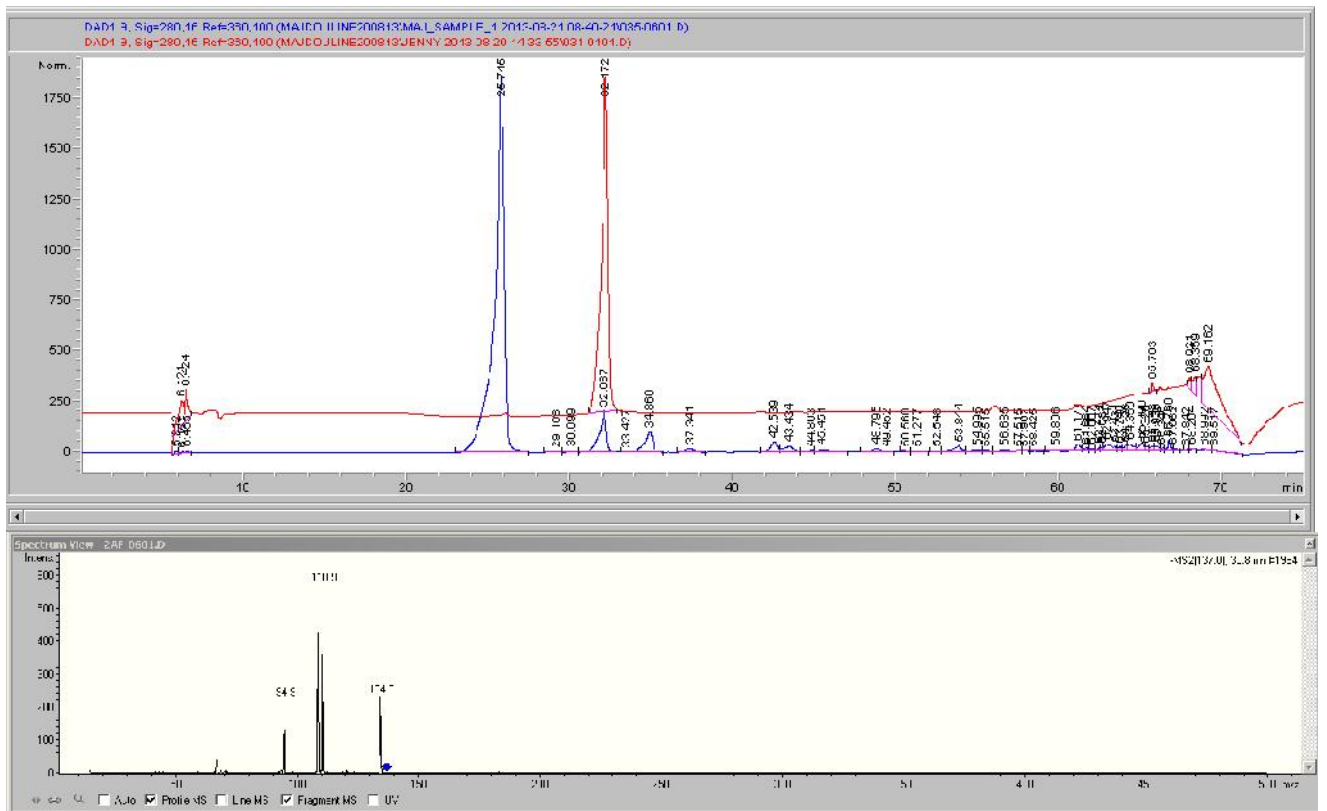
S4_Oleuropein (area=51.121)



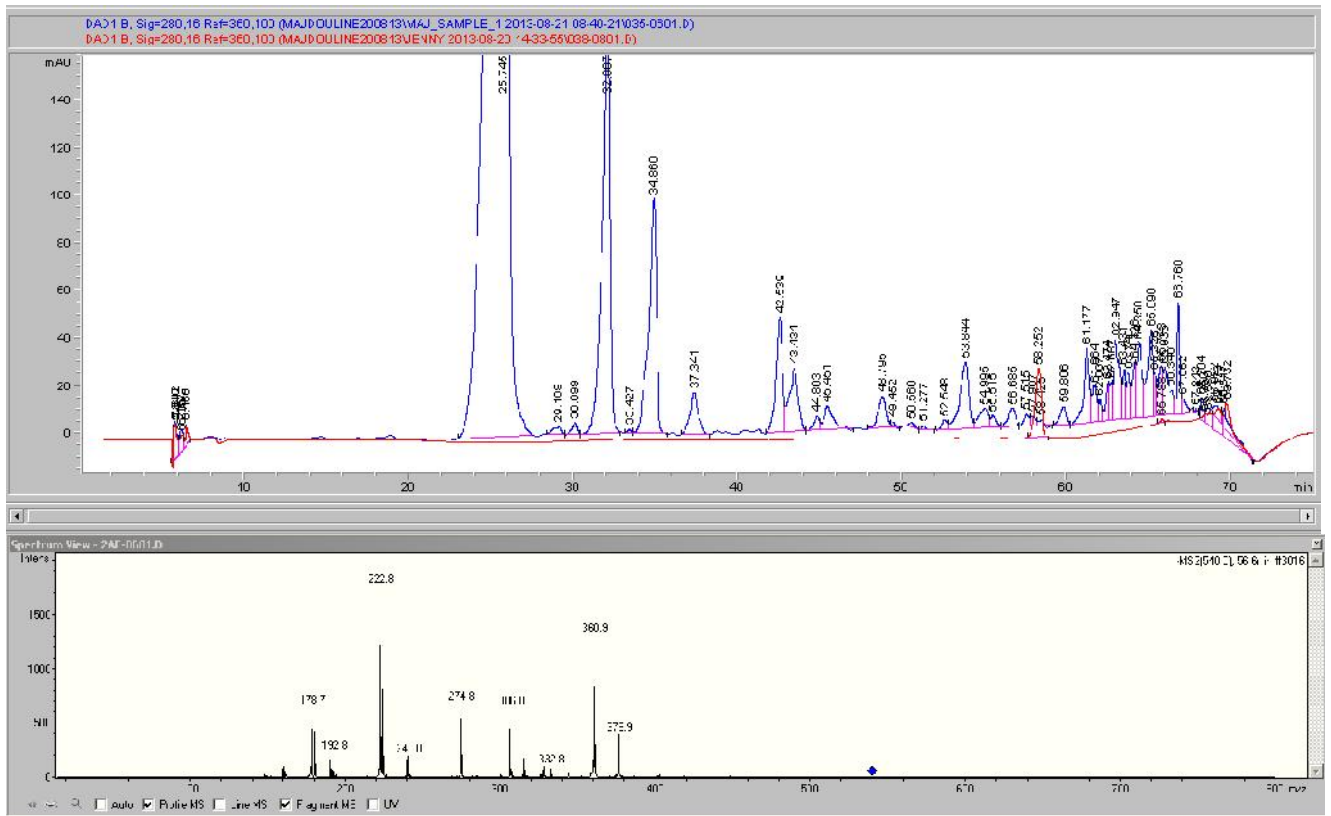
V_hydroxytyrosol (area=74211.3)



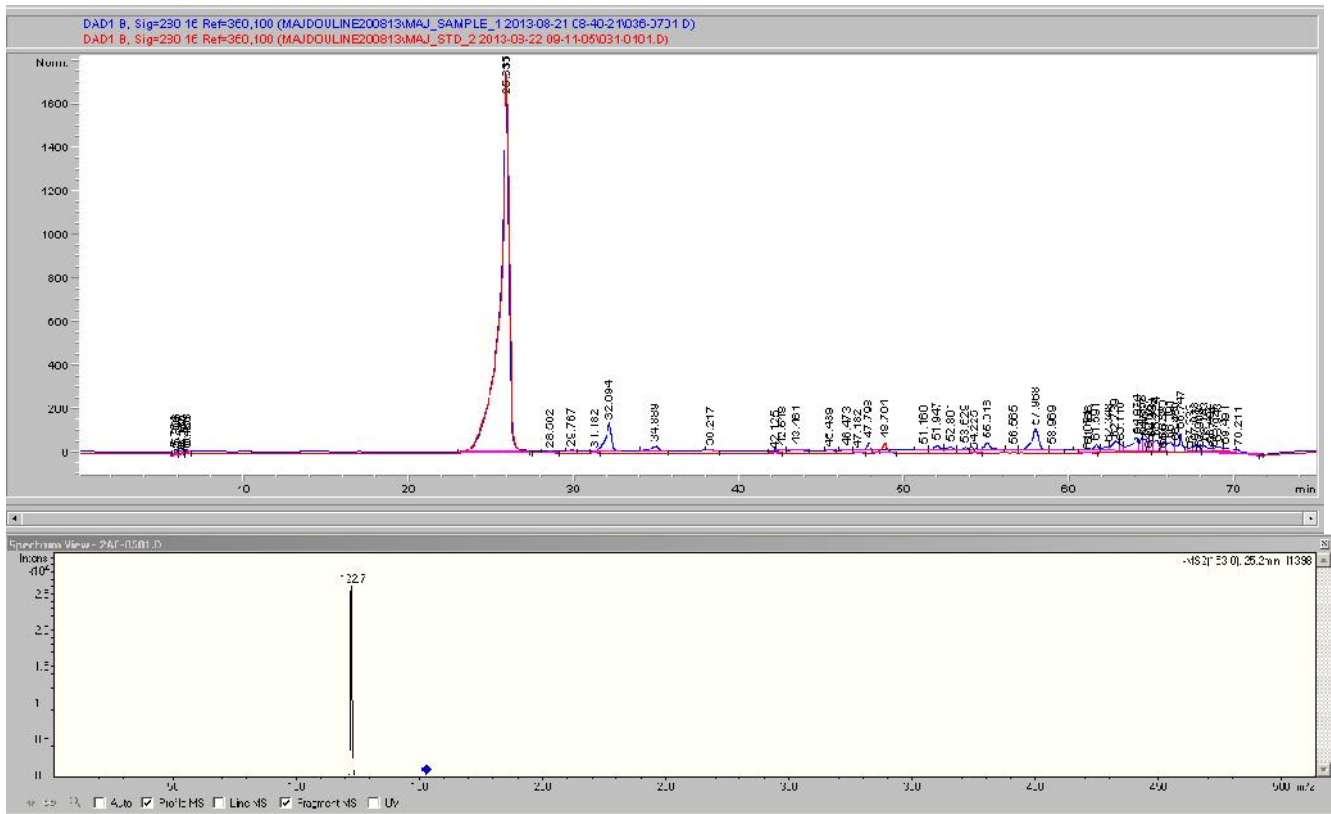
V_Tyrosol (area=5939.05)



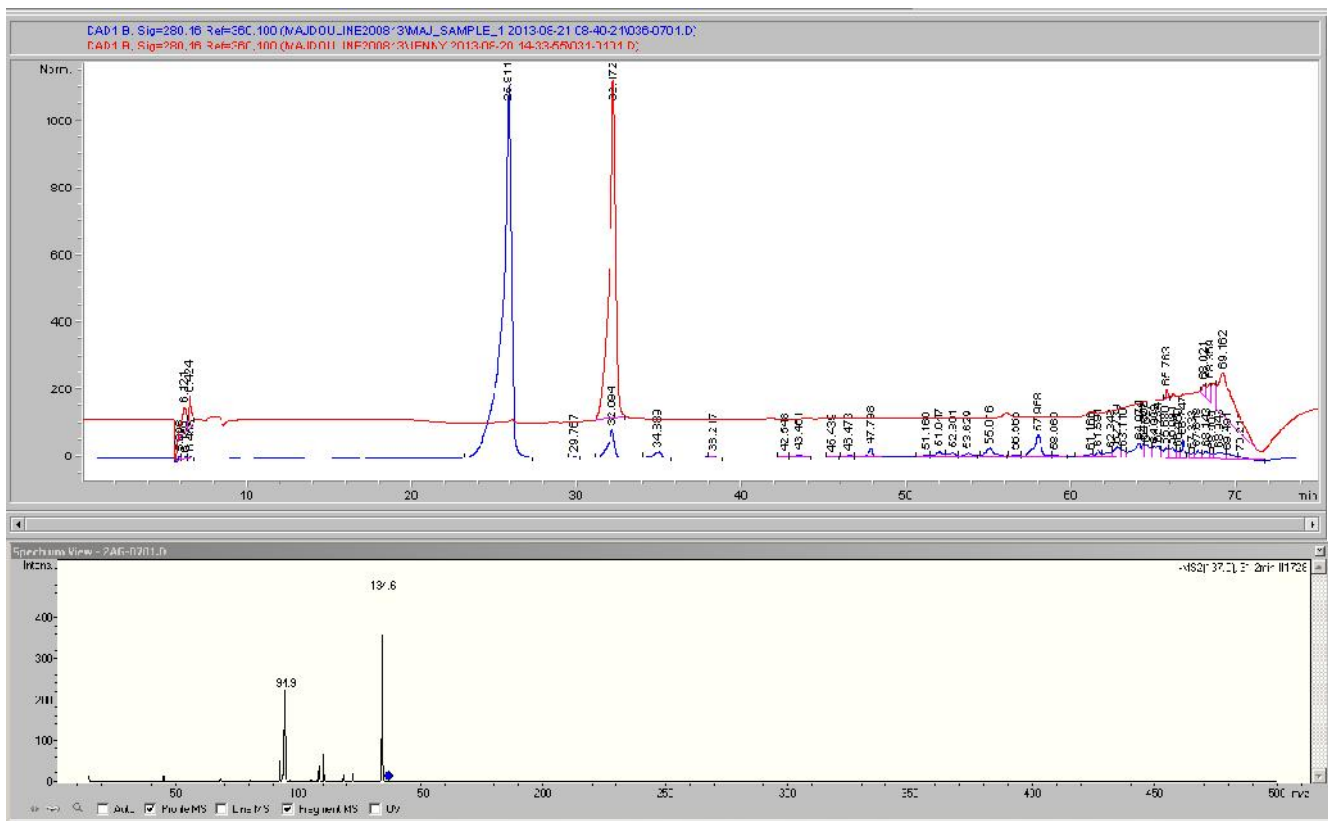
V_oleuropein (area=23.75)



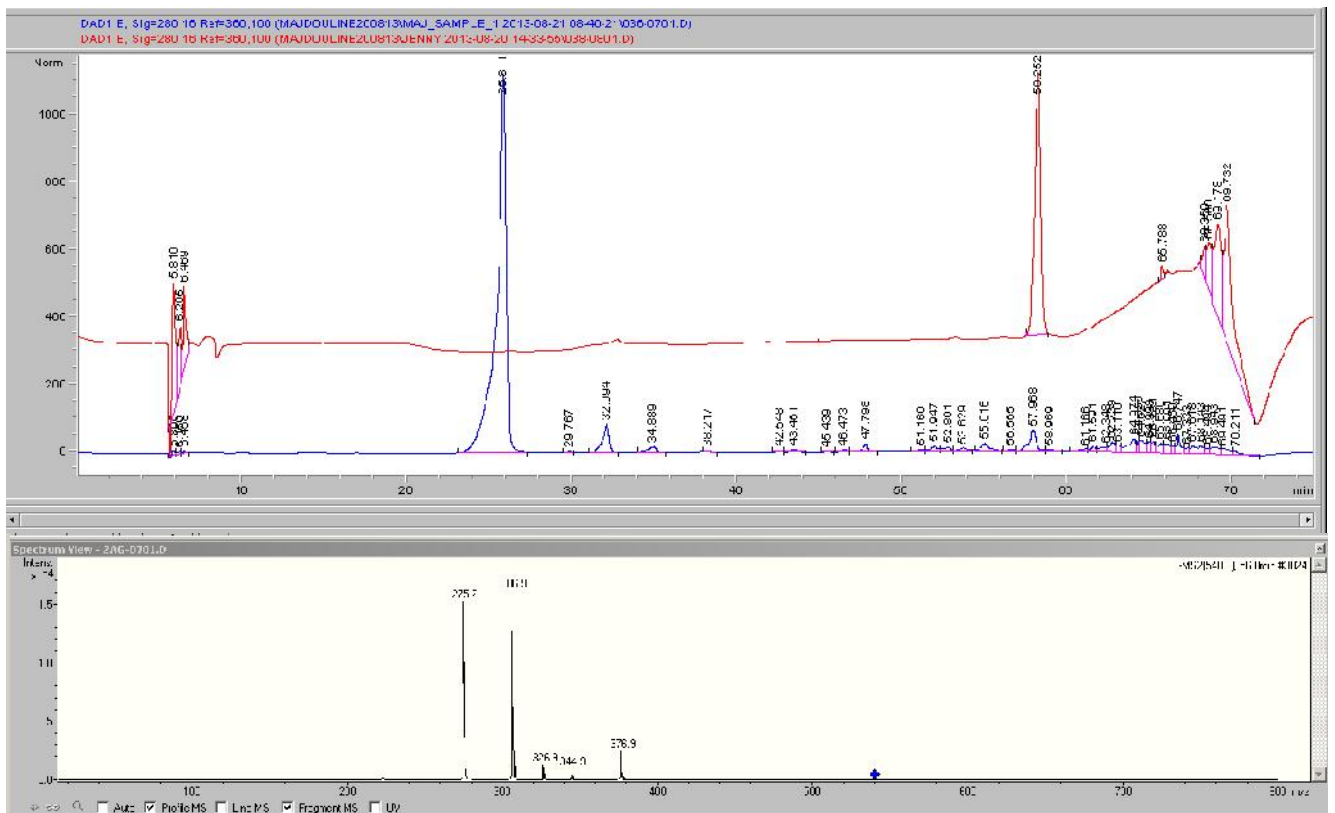
T_Hydroxytyrosol (area=43125.4)



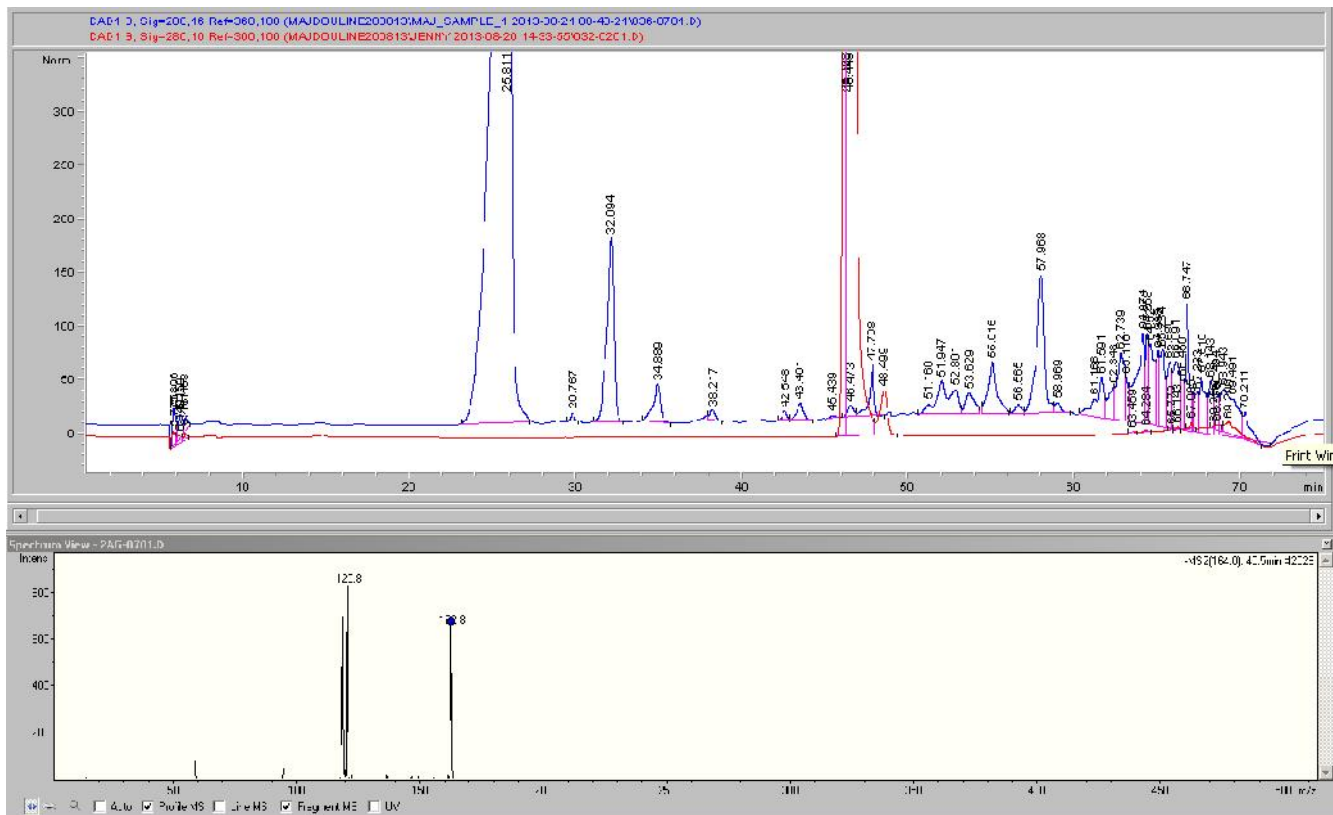
T_Tyrosol (area=2208.98)



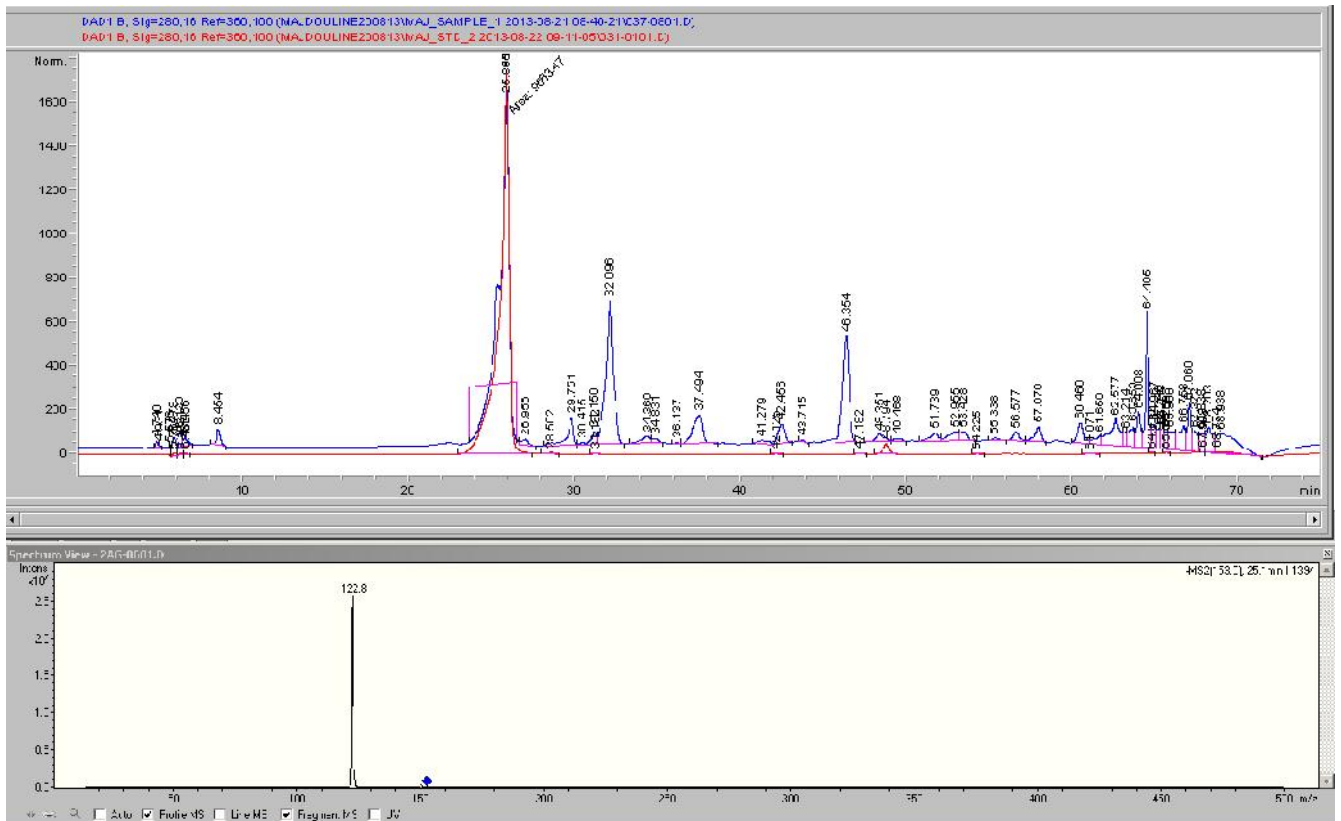
T_Oleuropein (area=1750.8)



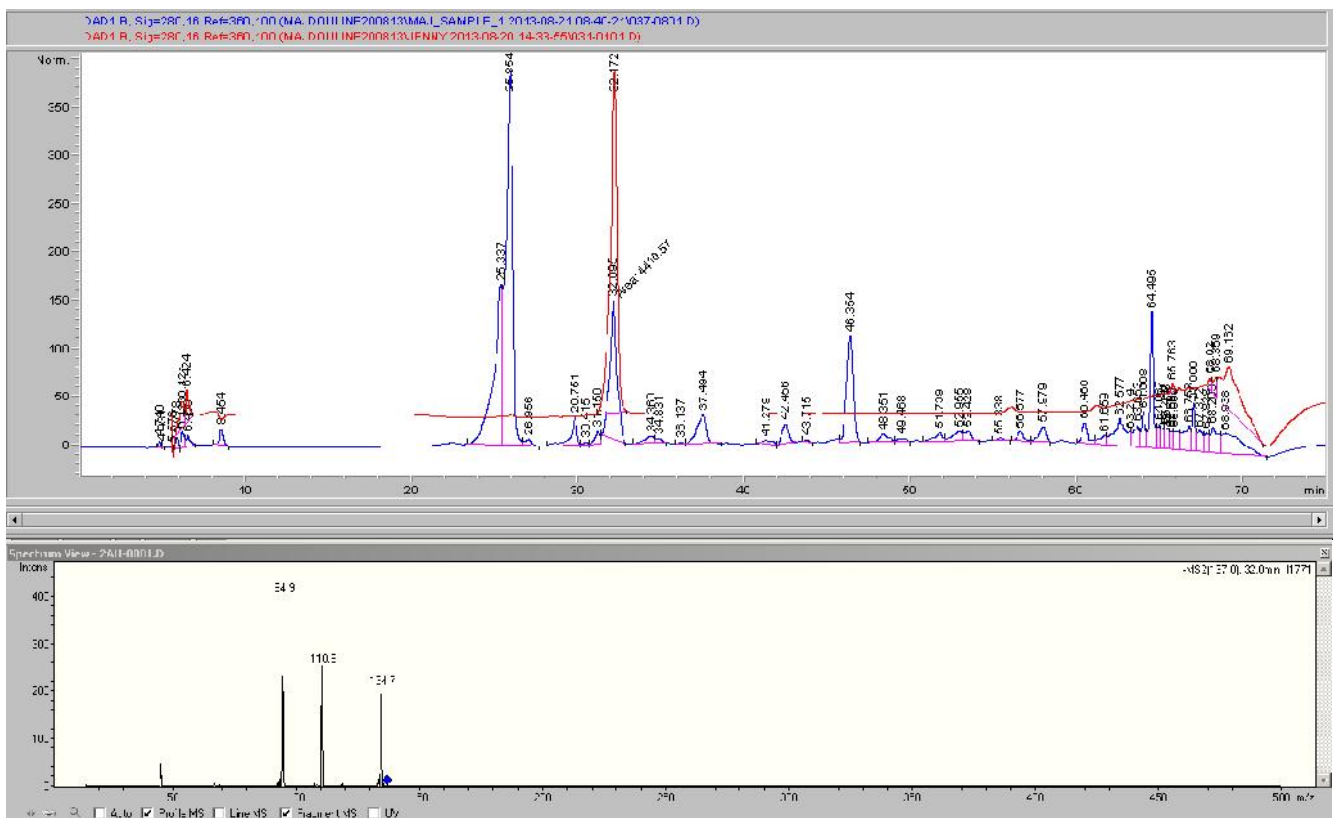
T_P-coumaric acid (area=282.313)



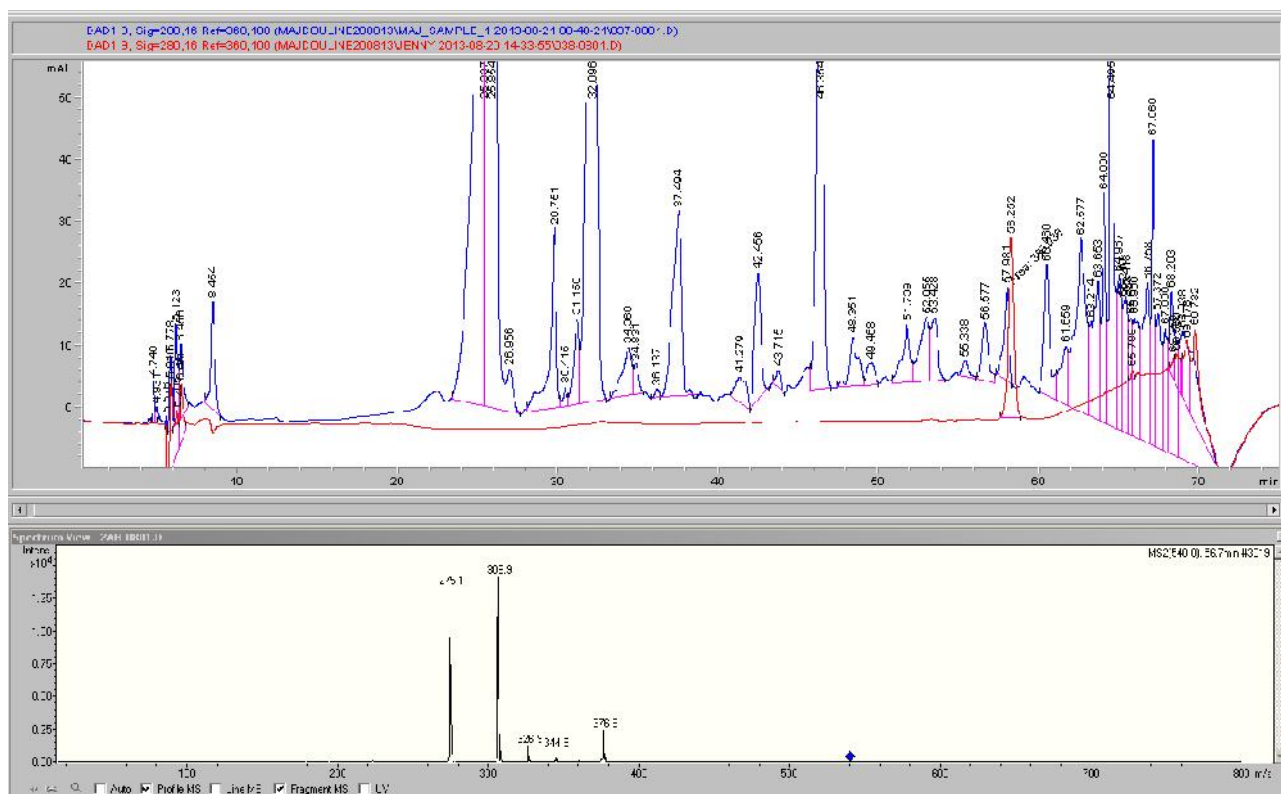
N_Hydroxytyrosol (area=9663.47)



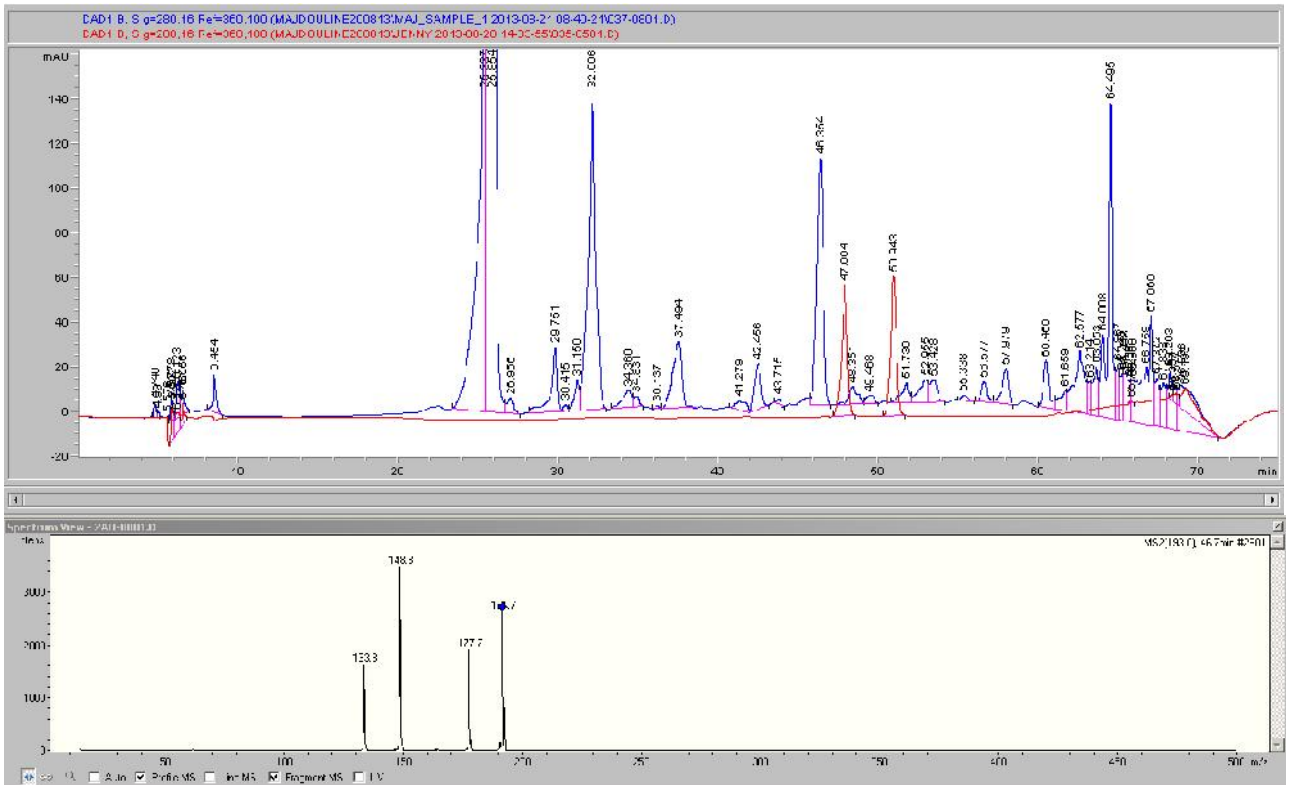
N_Tyrosol (area=4410.57)



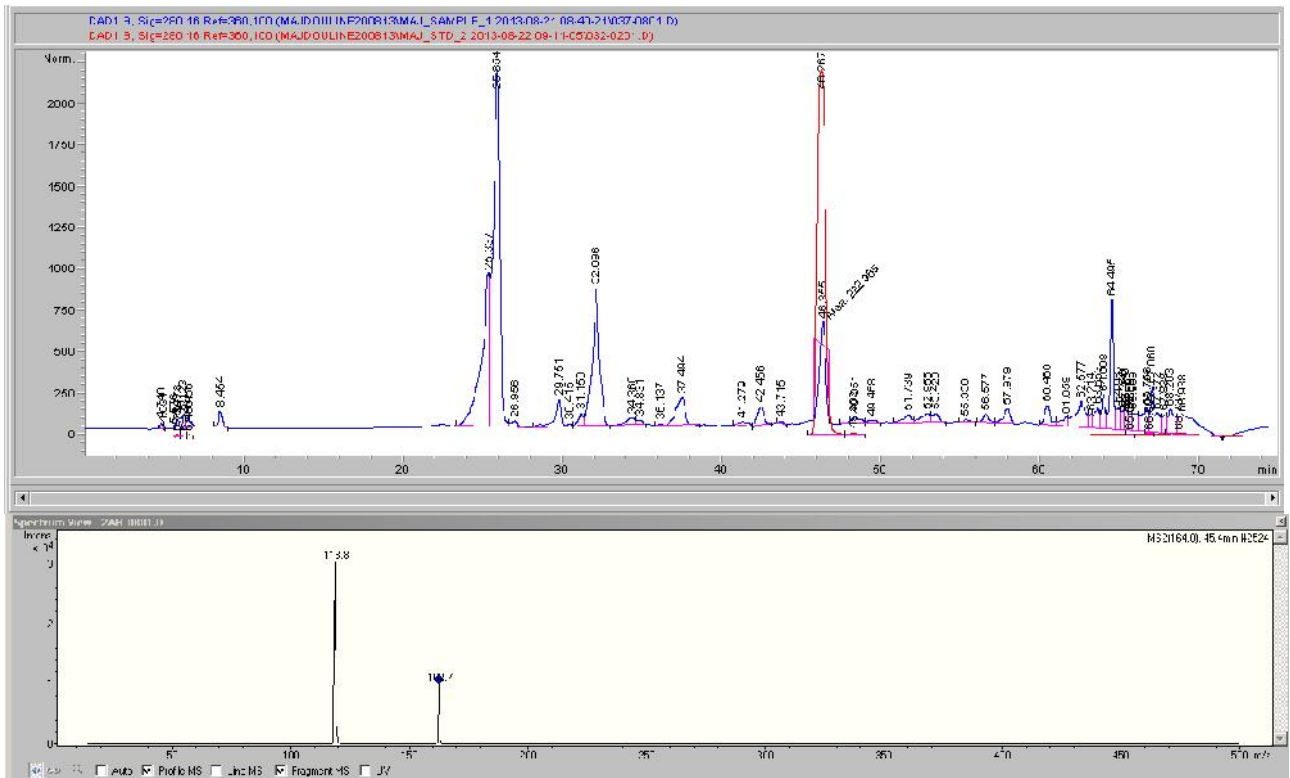
N_Oleuropein (area=388.036)



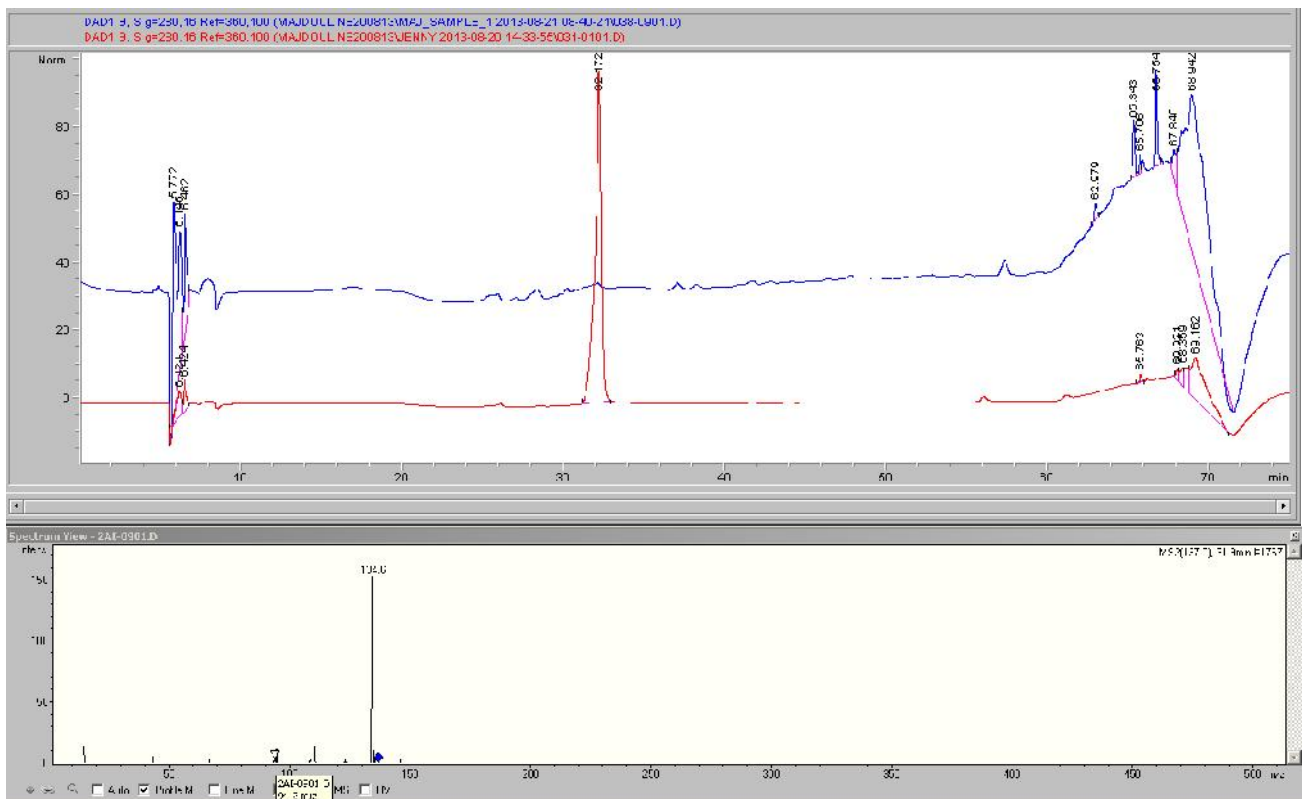
N_ferrulic acid (area=14.04, 35.28)



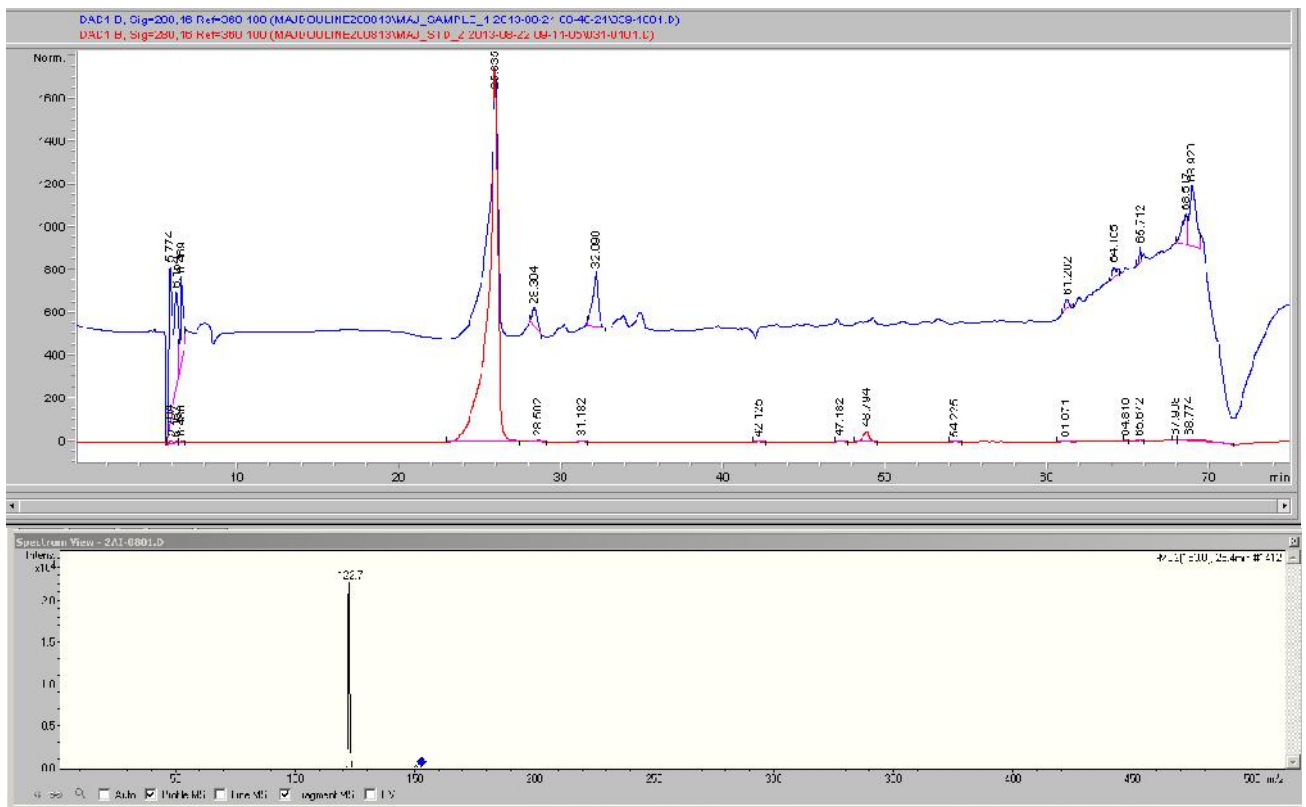
N_P-coumaric acid (area=222.965)



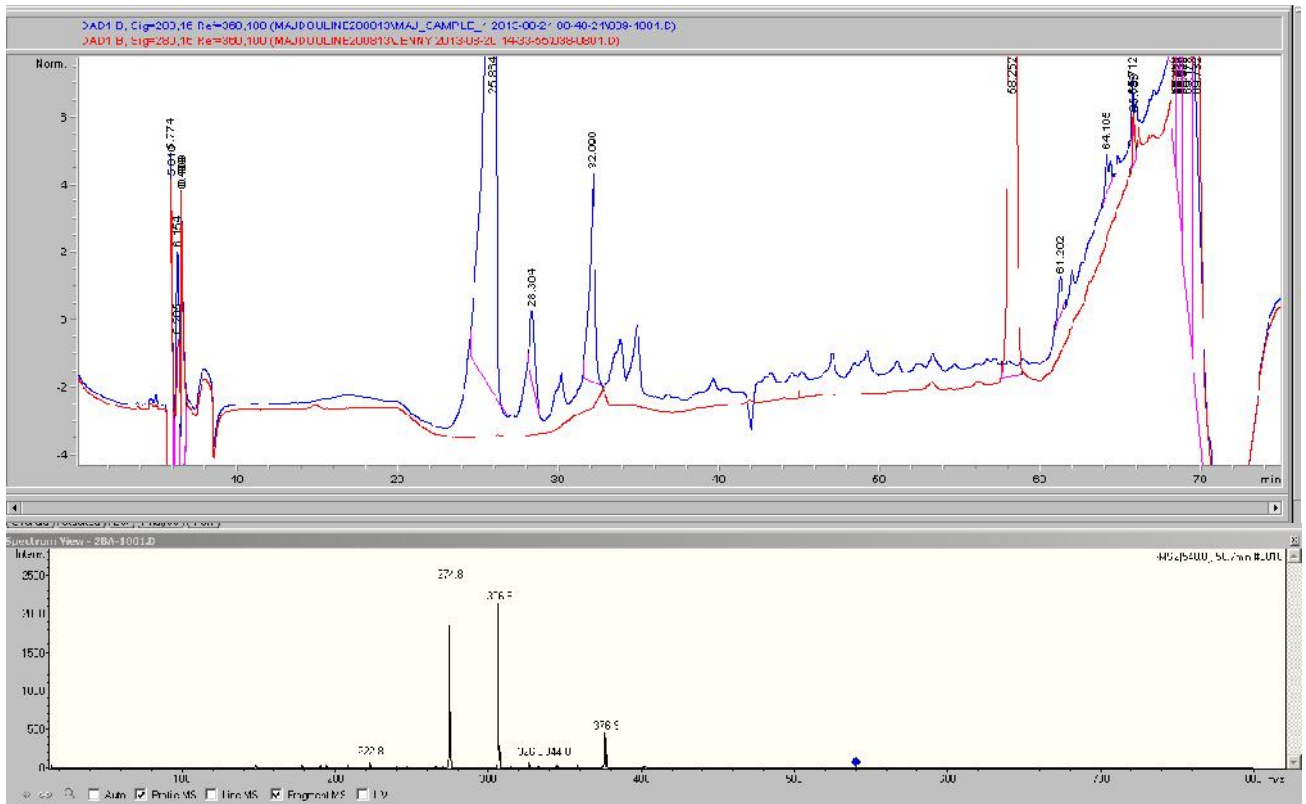
S1F1_Tyrosol (area=30.0784)



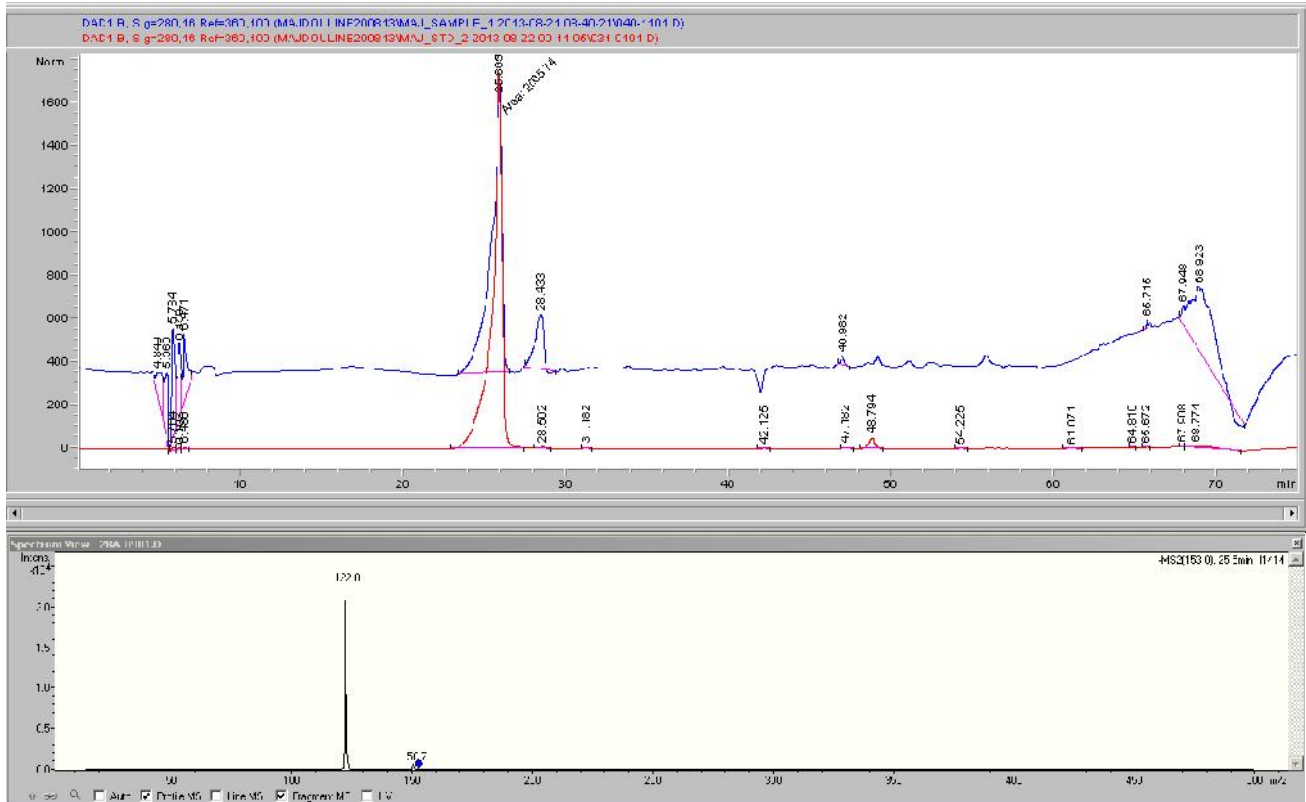
S1F6_Hydroxytyrosol (area=1075.7)



S1F6_Oleuropein (area=13.74)

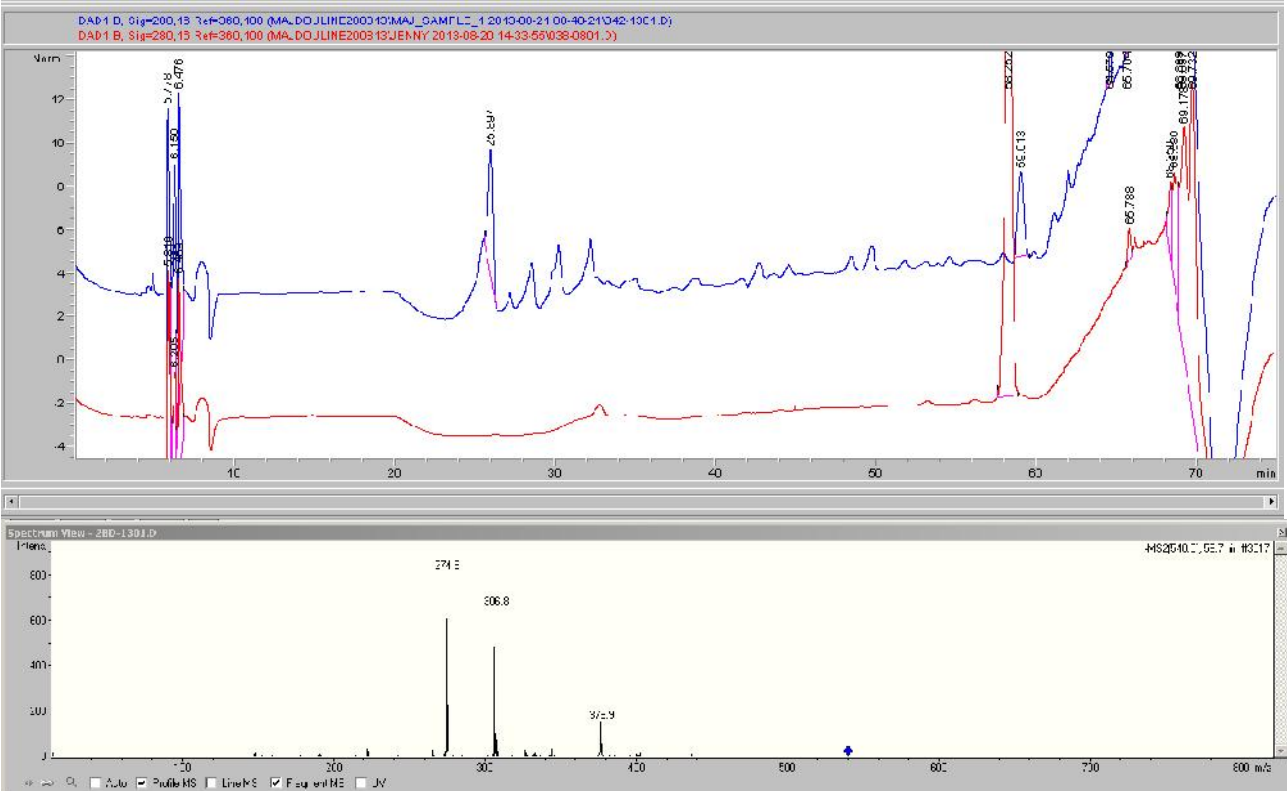


S1F7_Hydroxytyrosol (area=2085.74)

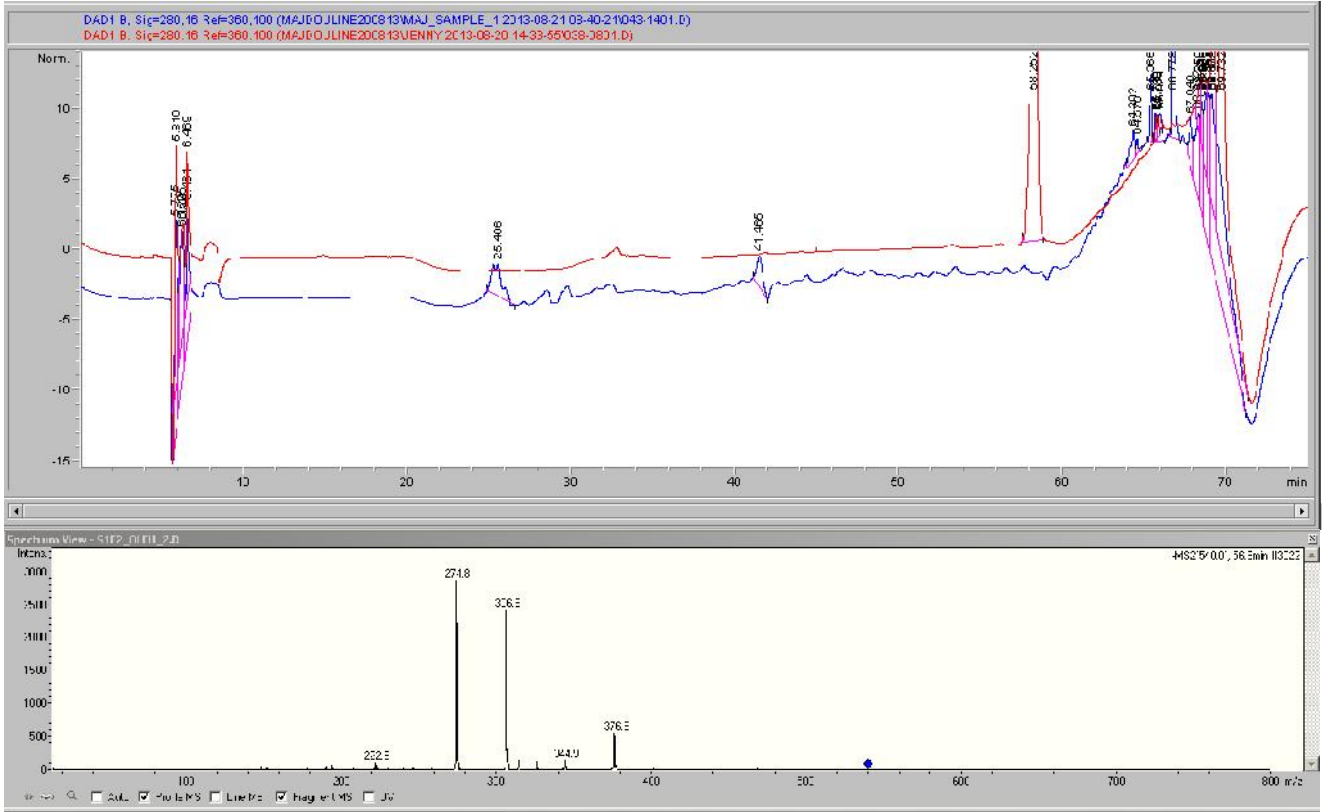


S1F8 = no confirmed compound

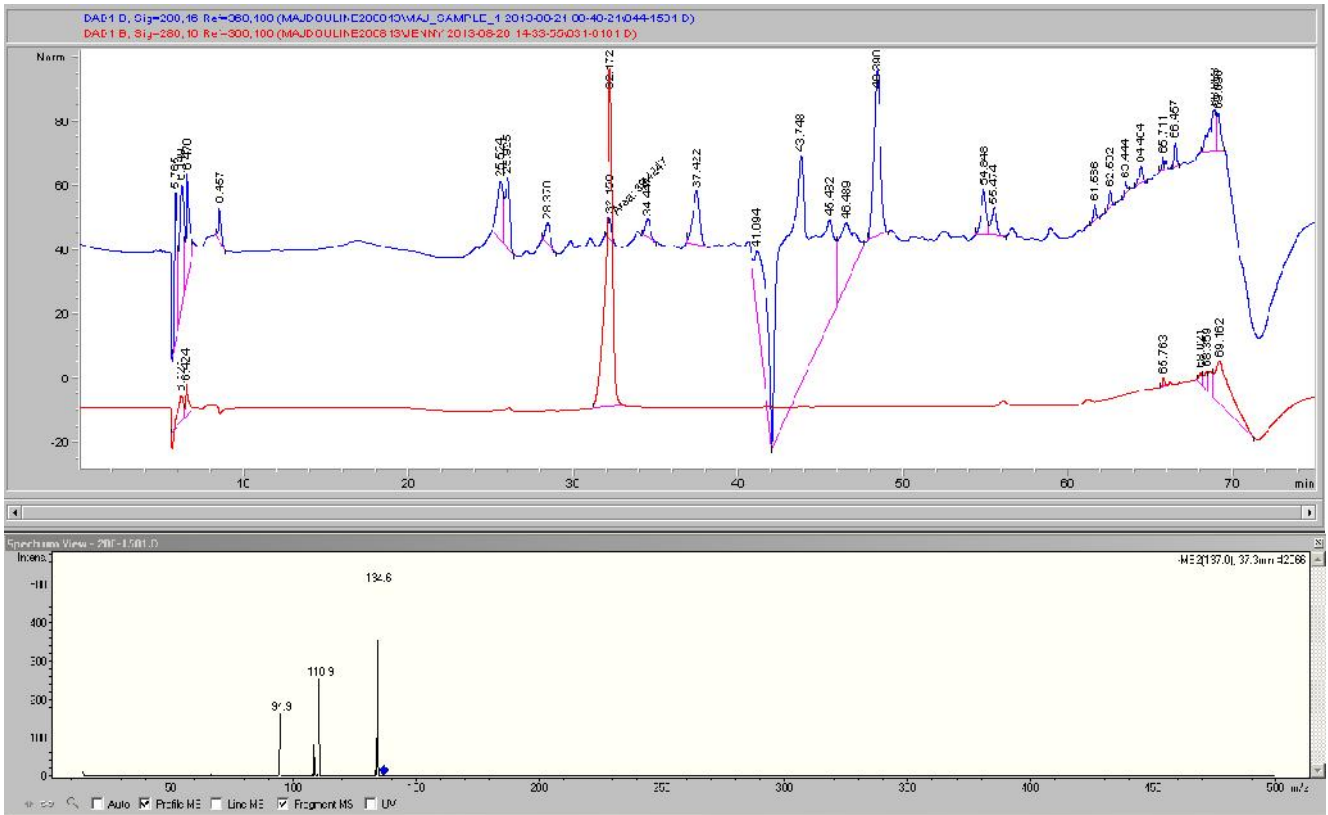
S1F9_oleuropein (area=54.1245)



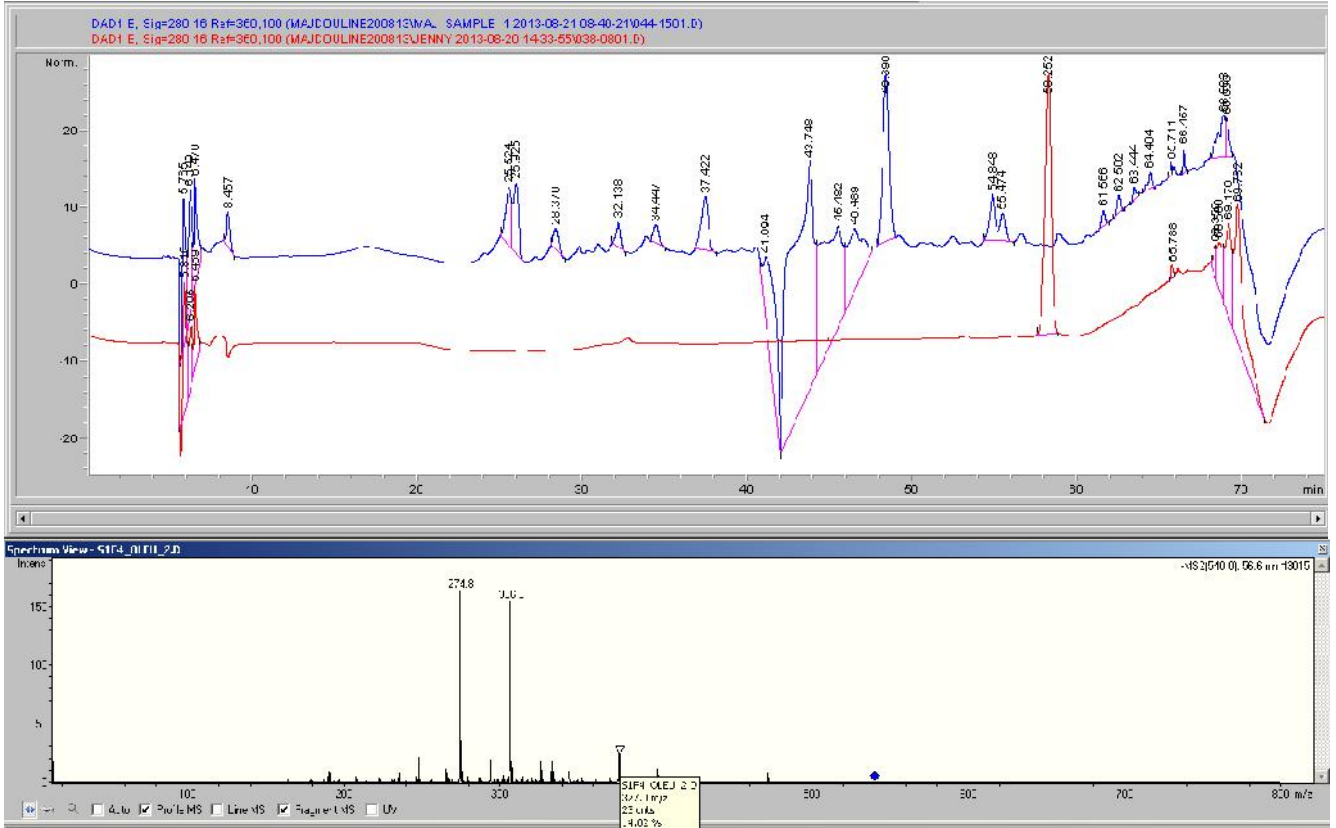
S2F2_Oleuropein (area=67.5804)



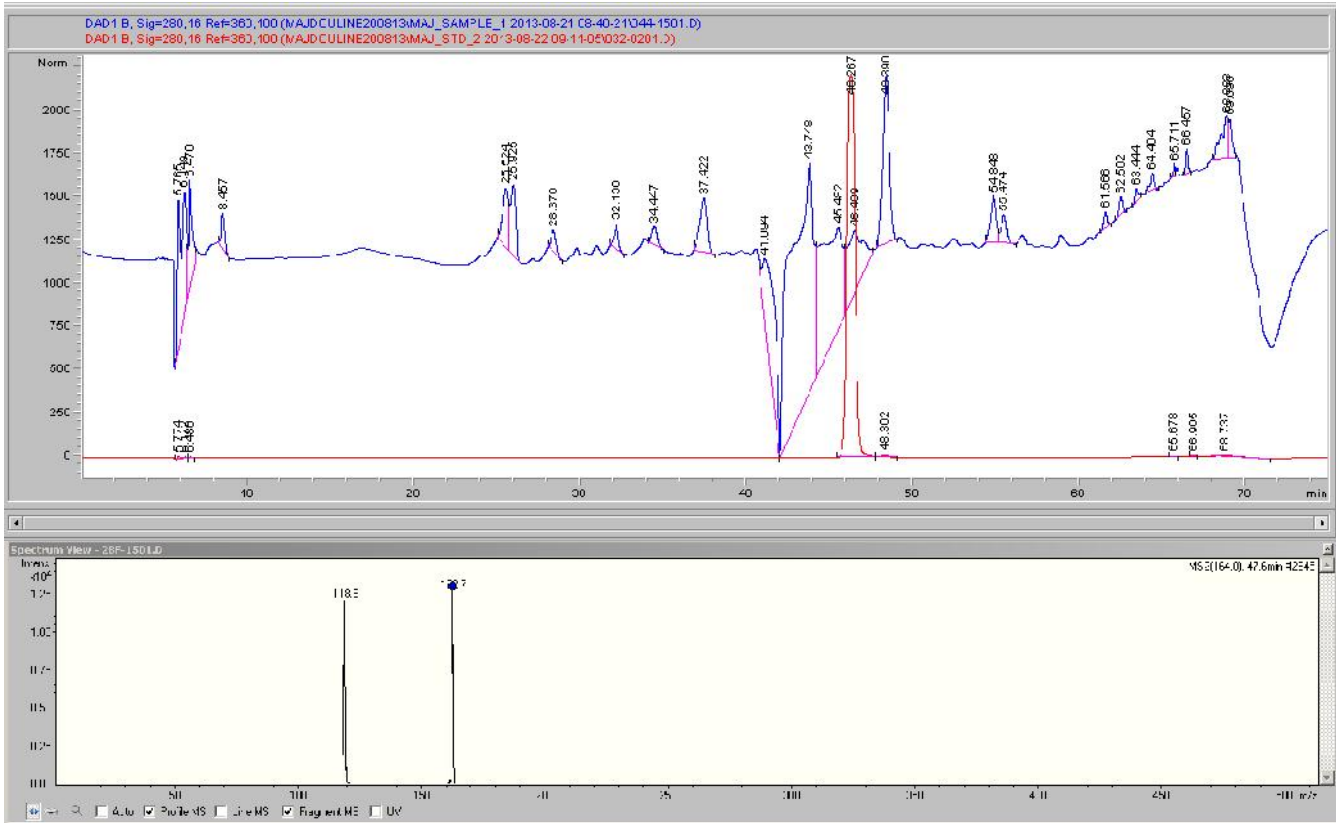
S2F4_tyrosol (area=39.4247)



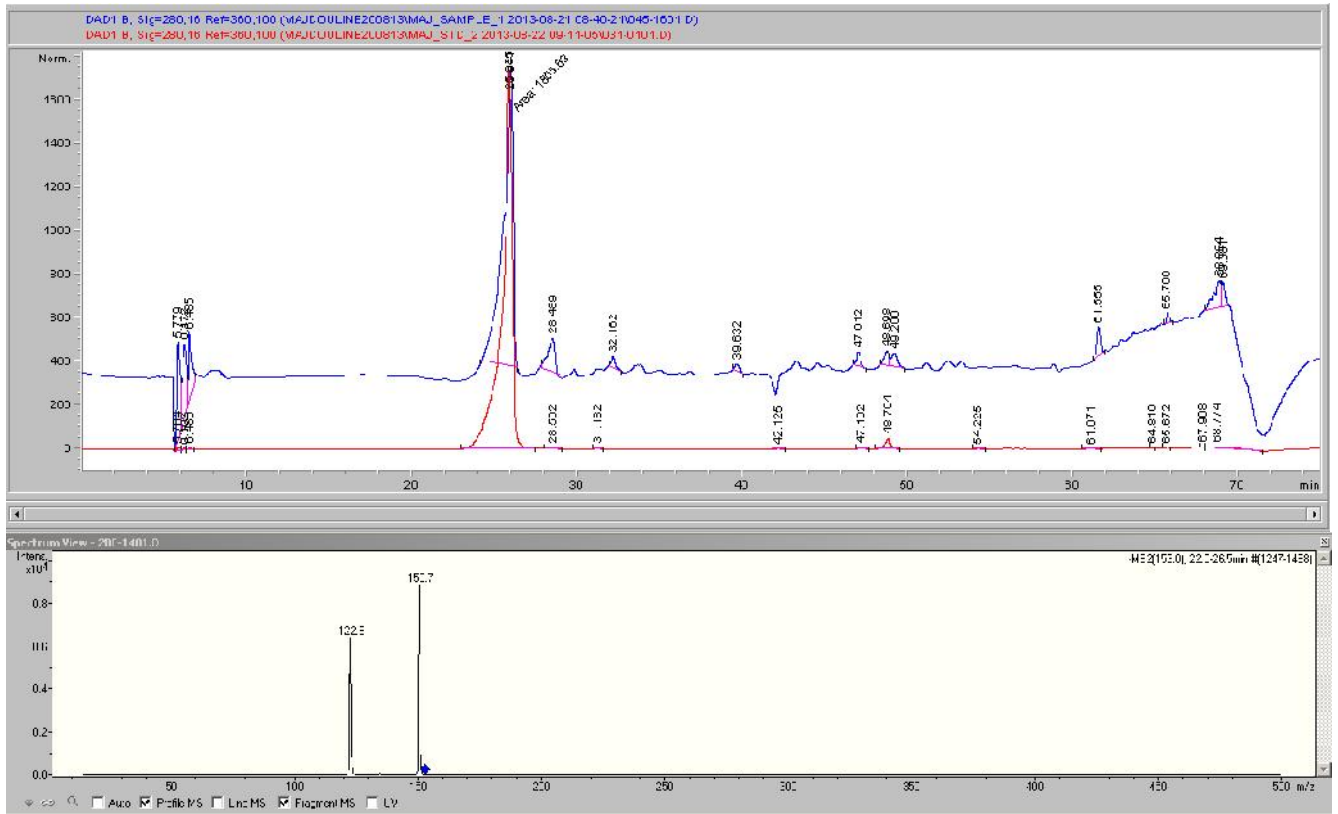
S2F4_Oleuropein (area=34.78)



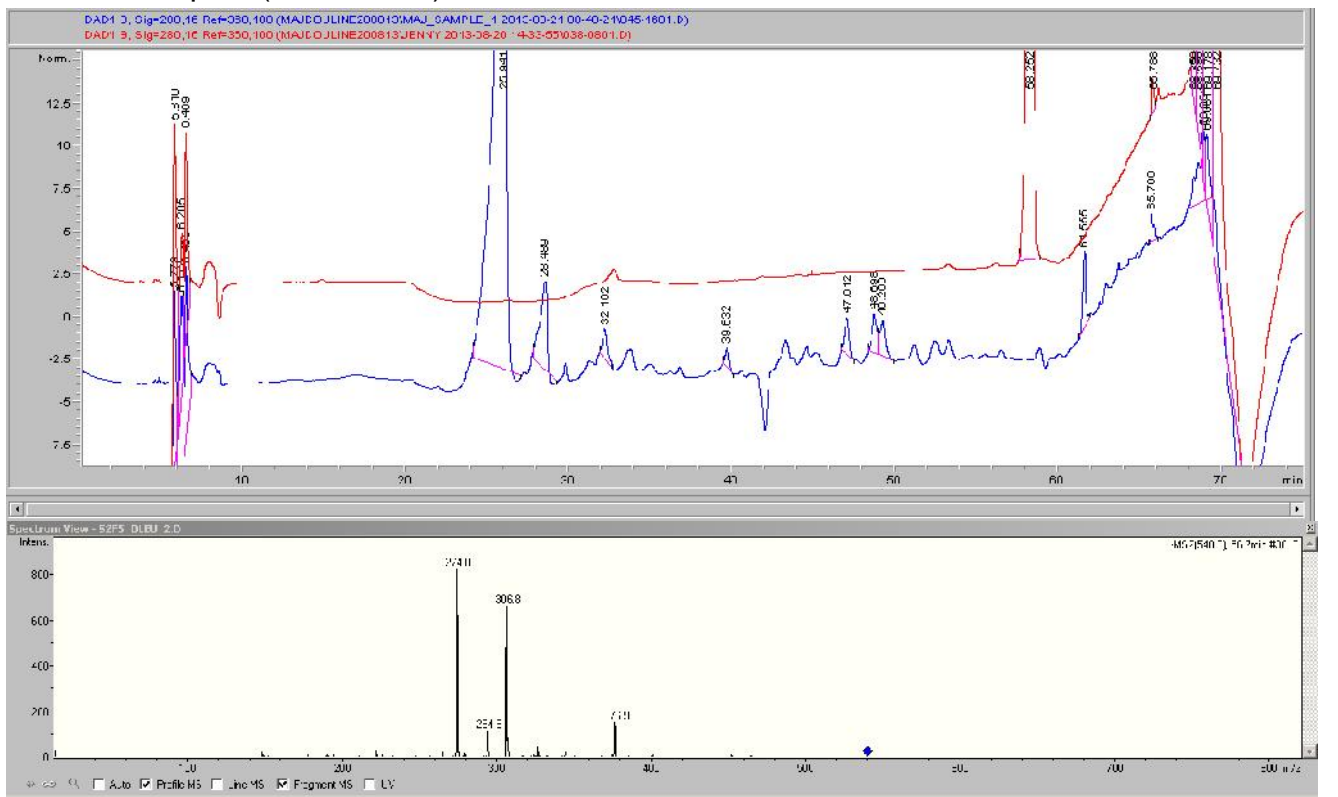
S2F4_P-coumaric acid (area=45.24)



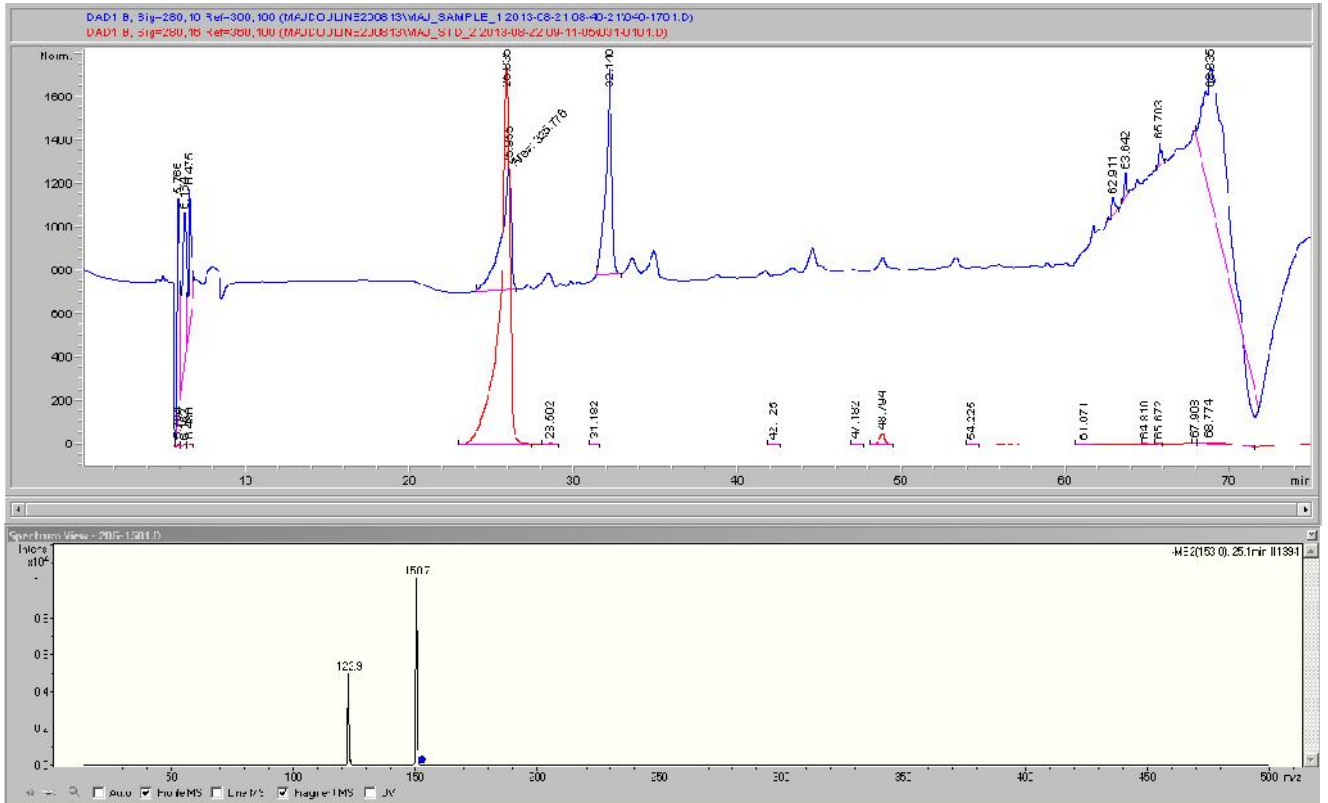
S2F5_hydroxytyrosol (area=1805.63)



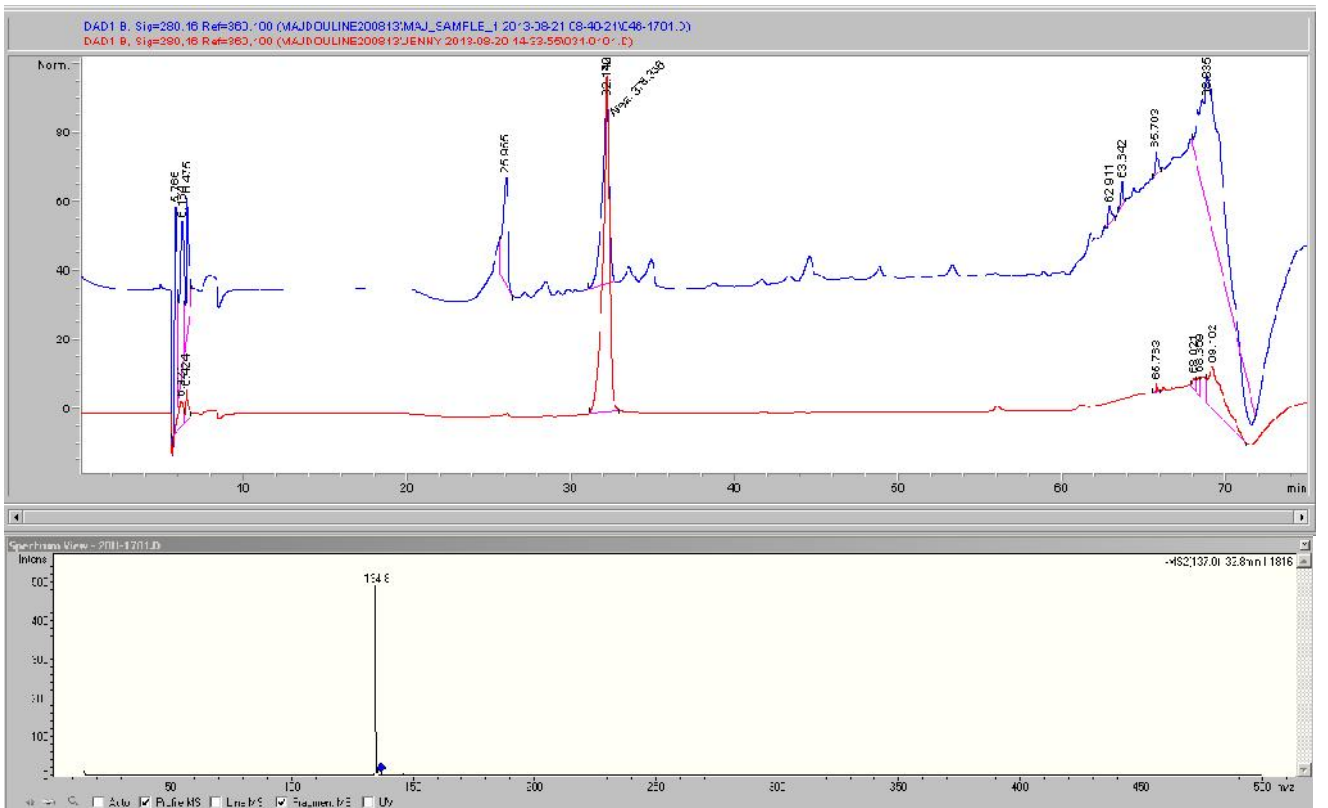
S2F5_oleuropein (area=53.03)



S2F6_hydroxytyrosol (area=325.776)



S2F6_Tyrosol (area=378.356)



S2F7_tyrosol (area=1859.39)

