

SUPPLEMENTAL MATERIAL

Table S1. List of genes differentially expressed in Cre(-) and SM22 α -Cre(+)Mmp14^{F/F} VSMCs

ENTREZ ID	SYMBOL	GENE NAME	Cre(-) 1	Cre(-) 2	Cre(+) 1	Cre(+) 2	Cre(-) AVG	Cre(+) AVG	Log2 (pos- nega)	Fold- change
379043	Raet1e	retinoic acid early transcript 1E	3.4	3.2	5.6	6.7	3.3	6.2	2.8	7.1
57266	Cxcl14	chemokine (C-X-C motif) ligand 14	5.4	4.7	8.6	6.4	5.0	7.5	2.5	5.7
20210	Saa3	serum amyloid A 3	3.4	6.0	7.3	7.0	4.7	7.1	2.5	5.5
14941	Gzmd	granzyme D	2.0	2.2	6.8	2.1	2.1	4.4	2.4	5.1
57781	Cd200r1	CD200 receptor 1	4.1	3.8	6.0	6.5	3.9	6.3	2.4	5.1
17533	Mrc1	mannose receptor, C type 1	4.9	5.7	7.0	7.7	5.3	7.4	2.1	4.2
80891	Fcrls	Fc receptor-like 5, scavenger receptor	6.0	3.7	8.2	5.6	4.8	6.9	2.1	4.2
232413	Clec12a	C-type lectin domain family 12, member a	4.8	5.3	7.3	6.8	5.0	7.0	2.0	4.1
56744	Pf4	platelet factor 4	4.3	5.2	5.5	8.1	4.8	6.8	2.0	4.1
21810	Tgfb1	transforming growth factor, beta induced	6.0	6.7	8.2	8.5	6.3	8.3	2.0	4.0
72318	Cyth4	cytohesin 4	5.8	5.7	7.6	7.9	5.8	7.7	2.0	3.9
15951	Ifi204	interferon activated gene 204	3.2	4.3	6.1	5.3	3.8	5.7	2.0	3.9
320292	Rasgef1b	RasGEF domain family, member 1B	3.7	3.9	5.8	5.7	3.8	5.8	2.0	3.9
12774	Ccr5	chemokine (C-C motif) receptor 5	3.4	3.0	4.8	5.4	3.2	5.1	1.9	3.7
14276	Folr2	folate receptor 2 (fetal)	5.0	4.5	8.0	5.4	4.8	6.7	1.9	3.7
20556	Slfm2	schlafen 2	6.2	5.9	7.9	8.0	6.0	7.9	1.9	3.7
15109	Hal	histidine ammonia lyase	2.4	2.8	2.5	6.5	2.6	4.5	1.9	3.7
243277	Gpr133	G protein-coupled receptor 133	2.9	4.1	6.1	4.7	3.5	5.4	1.9	3.6
68774	Ms4a6d	membrane-spanning 4-domains, subfamily A, member 6D	5.7	5.6	7.5	7.5	5.6	7.5	1.8	3.6
17916	Myo1f	myosin IF	5.6	5.7	7.3	7.7	5.7	7.5	1.8	3.6
107321	Lpxn	leupaxin	3.2	3.7	5.5	5.0	3.4	5.2	1.8	3.5
246177	Myo1g	myosin IG	3.3	3.3	4.4	5.8	3.3	5.1	1.8	3.5
20452	St8sia4	ST8 alpha-N-acetylneuraminide alpha-2,8-sialyltransferase 4	4.0	4.5	5.7	6.3	4.3	6.0	1.8	3.4
109648	Npy	neuropeptide Y	8.0	7.5	8.9	10.1	7.7	9.5	1.8	3.4
17084	Ly86	lymphocyte antigen 86	4.3	5.5	6.2	7.0	4.9	6.6	1.8	3.4
19264	Ptpnc	protein tyrosine phosphatase, receptor type, C	6.6	6.7	8.3	8.5	6.6	8.4	1.8	3.4
13733	Emr1	EGF-like module containing, mucin-like, hormone receptor-like sequence 1	6.1	6.0	7.9	7.6	6.0	7.8	1.7	3.3
14727	Gp49a	glycoprotein 49 A	6.6	5.9	7.8	8.2	6.3	8.0	1.7	3.3
23845	Clec5a	C-type lectin domain family 5, member a	4.4	4.7	5.8	6.8	4.6	6.3	1.7	3.3
20568	Slpi	secretory leukocyte peptidase inhibitor	5.0	4.7	6.2	6.9	4.9	6.6	1.7	3.3

20308	Ccl9	chemokine (C-C motif) ligand 9	5.2	6.0	6.9	7.7	5.6	7.3	1.7	3.2
18733	Pirb	paired Ig-like receptor B	5.5	5.9	7.1	7.7	5.7	7.4	1.7	3.2
17060	Blnk	B cell linker	6.1	6.1	7.8	7.8	6.1	7.8	1.7	3.2
100303646	AF357355	snoRNA AF357355	3.2	3.2	6.1	3.6	3.2	4.9	1.7	3.2
20288	Msr1	macrophage scavenger receptor 1	6.4	6.7	8.1	8.4	6.6	8.2	1.7	3.2
66109	Tspan13	tetraspanin 13	4.0	5.3	6.4	6.2	4.6	6.3	1.7	3.2
11501	Adam8	a disintegrin and metallopeptidase domain 8	6.6	6.5	8.3	8.0	6.5	8.2	1.7	3.1
319446	Dpep2	dipeptidase 2	5.3	3.9	6.6	5.9	4.6	6.3	1.7	3.1
544963	Iqgap2	IQ motif containing GTPase activating protein 2	5.4	4.9	6.3	7.3	5.2	6.8	1.6	3.1
69769	Tnfaip8l2	tumor necrosis factor, alpha-induced protein 8-like 2	4.6	4.9	6.1	6.8	4.8	6.4	1.6	3.1
12506	Cd48	CD48 antigen	5.8	5.3	6.9	7.5	5.6	7.2	1.6	3.1
382062	AB124611	cDNA sequence AB124611	5.1	5.1	6.3	7.1	5.1	6.7	1.6	3.1
15900	Irf8	interferon regulatory factor 8	5.5	5.2	6.6	7.3	5.4	7.0	1.6	3.1
20299	Ccl22	chemokine (C-C motif) ligand 22	2.7	3.3	2.6	6.7	3.0	4.6	1.6	3.0
20345	Selplg	selectin, platelet (p-selectin) ligand	5.5	5.1	6.3	7.5	5.3	6.9	1.6	3.0
22324	Vav1	vav 1 oncogene	4.5	3.8	5.6	5.9	4.2	5.8	1.6	3.0
16592	Fabp5	fatty acid binding protein 5, epidermal	8.5	8.0	9.4	10.2	8.2	9.8	1.6	3.0
17476	Mpeg1	macrophage expressed gene 1	6.9	6.6	8.0	8.7	6.8	8.3	1.6	3.0
233571	P2ry6	pyrimidinergic receptor P2Y, G-protein coupled, 6	6.9	6.6	8.5	8.2	6.7	8.3	1.6	3.0
15170	Ptpn6	protein tyrosine phosphatase, non-receptor type 6	5.0	5.3	6.4	7.1	5.2	6.7	1.6	3.0
83433	Trem2	triggering receptor expressed on myeloid cells 2	7.4	7.0	8.6	9.0	7.2	8.8	1.6	3.0
11690	Alox5ap	arachidonate 5-lipoxygenase activating protein	7.7	7.4	9.1	9.1	7.6	9.1	1.6	2.9
12259	C1qa	complement component 1, q subcomponent, alpha polypeptide	6.6	6.9	8.2	8.4	6.7	8.3	1.6	2.9
20302	Ccl3	chemokine (C-C motif) ligand 3	6.4	7.1	7.7	9.0	6.8	8.3	1.6	2.9
16912	Psmb9	proteasome (prosome, macropain) subunit, beta type 9 (large multifunctional peptidase 2)	4.6	4.8	5.8	6.7	4.7	6.3	1.6	2.9
14131	Fcgr3	Fc receptor, IgG, low affinity III	6.3	6.7	7.8	8.3	6.5	8.1	1.5	2.9
12768	Ccr1	chemokine (C-C motif) receptor 1	3.3	3.4	4.0	5.7	3.3	4.9	1.5	2.9
16149	Cd74	CD74 antigen (invariant polypeptide of major histocompatibility complex, class II antigen-associated)	3.9	3.4	3.7	6.6	3.6	5.1	1.5	2.9
17970	Ncf2	neutrophil cytosolic factor 2	5.2	5.6	6.5	7.4	5.4	7.0	1.5	2.9
17972	Ncf4	neutrophil cytosolic factor 4	3.6	4.3	5.2	5.8	4.0	5.5	1.5	2.9
14129	Fcgr1	Fc receptor, IgG, high affinity I	4.6	4.6	6.4	5.8	4.6	6.1	1.5	2.9
74272	1700054O19Rik	RIKEN cDNA 1700054O19 gene	2.5	4.0	4.8	4.7	3.2	4.7	1.5	2.8

12767	Cxcr4	chemokine (C-X-C motif) receptor 4	6.8	6.6	8.1	8.3	6.7	8.2	1.5	2.8
23900	Hcst	hematopoietic cell signal transducer	5.1	5.7	6.2	7.6	5.4	6.9	1.5	2.8
54712	Plxnc1	plexin C1	6.5	5.6	7.4	7.7	6.0	7.5	1.5	2.8
19354	Rac2	RAS-related C3 botulinum substrate 2	6.9	6.9	8.1	8.7	6.9	8.4	1.5	2.8
668218	Bin2	bridging integrator 2	3.0	2.9	3.9	5.0	2.9	4.4	1.5	2.8
217305	Cd300ld	CD300 molecule-like family member d	4.8	5.2	6.2	6.7	5.0	6.5	1.5	2.8
12984	Csf2rb2	colony stimulating factor 2 receptor, beta 2, low-affinity (granulocyte-macrophage)	6.3	6.0	7.3	8.0	6.1	7.6	1.5	2.8
13618	Ednrb	endothelin receptor type B	4.4	4.3	5.2	6.4	4.3	5.8	1.5	2.8
14130	Fcgr2b	Fc receptor, IgG, low affinity IIb	5.4	5.4	6.4	7.5	5.4	6.9	1.5	2.8
14544	Gda	guanine deaminase	4.8	5.9	6.3	7.4	5.4	6.8	1.5	2.8
14744	Gpr65	G-protein coupled receptor 65	5.8	4.9	7.1	6.7	5.4	6.9	1.5	2.8
66857	Plbd1	phospholipase B domain containing 1	3.2	4.9	3.2	7.8	4.0	5.5	1.5	2.8
16534	Kcnn4	potassium intermediate/small conductance calcium-activated channel, subfamily N, member 4	4.0	4.3	5.8	5.5	4.2	5.7	1.5	2.8
320207	Pik3r5	phosphoinositide-3-kinase, regulatory subunit 5, p101	5.9	5.7	7.2	7.4	5.8	7.3	1.5	2.8
216869	Arrb2	arrestin, beta 2	5.5	5.5	6.8	7.1	5.5	7.0	1.5	2.8
19735	Rgs2	regulator of G-protein signaling 2	5.3	4.4	6.2	6.5	4.9	6.3	1.5	2.8
217203	Tmem106a	transmembrane protein 106A	6.9	6.8	8.4	8.2	6.8	8.3	1.5	2.8
215632	Psd4	pleckstrin and Sec7 domain containing 4	4.1	2.9	4.7	5.1	3.5	4.9	1.5	2.7
226652	Arhgap30	Rho GTPase activating protein 30	4.8	4.6	5.8	6.4	4.7	6.1	1.4	2.7
12047	Bcl2a1d	B cell leukemia/lymphoma 2 related protein A1d	7.6	7.5	8.9	9.1	7.5	9.0	1.4	2.7
76933	Ifi2712a	interferon, alpha-inducible protein 27 like 2A	3.5	3.4	5.4	4.4	3.5	4.9	1.4	2.7
16197	Il7r	interleukin 7 receptor	6.7	7.2	7.8	9.0	7.0	8.4	1.4	2.7
17085	Ly9	lymphocyte antigen 9	4.1	4.3	5.2	6.1	4.2	5.7	1.4	2.7
105855	Nckap1l	NCK associated protein 1 like	6.9	6.8	8.2	8.4	6.8	8.3	1.4	2.7
239849	Cd200r4	CD200 receptor 4	6.6	6.2	7.7	8.0	6.4	7.9	1.4	2.7
16409	Itgam	integrin alpha M	5.7	5.9	6.4	8.0	5.8	7.2	1.4	2.7
50934	Slc7a8	solute carrier family 7 (cationic amino acid transporter, y+ system), member 8	5.9	5.8	7.2	7.4	5.9	7.3	1.4	2.7
107769	Tm6sf1	transmembrane 6 superfamily member 1	5.4	5.5	6.6	7.2	5.5	6.9	1.4	2.7
94176	Dock2	dedicator of cyto-kinesis 2	4.4	4.6	5.7	6.1	4.5	5.9	1.4	2.7
223433	Fam105a	family with sequence similarity 105, member A	5.1	5.0	6.1	6.8	5.1	6.5	1.4	2.7
279572	Tlr13	toll-like receptor 13	6.6	6.2	7.5	8.1	6.4	7.8	1.4	2.7

54486	Hpgds	hematopoietic prostaglandin D synthase	5.0	4.9	6.3	6.4	4.9	6.3	1.4	2.6
15559	Htr2b	5-hydroxytryptamine (serotonin) receptor 2B	3.8	4.2	5.3	5.6	4.0	5.4	1.4	2.6
11810	Apobec1	apolipoprotein B mRNA editing enzyme, catalytic polypeptide 1	7.3	7.4	8.8	8.7	7.3	8.7	1.4	2.6
17079	Cd180	CD180 antigen	6.9	6.7	8.3	8.0	6.8	8.2	1.4	2.6
13723	Emb	embigin	7.0	6.9	7.9	8.8	7.0	8.3	1.4	2.6
67092	Gatm	glycine amidinotransferase (L-arginine:glycine amidinotransferase)	4.8	4.9	5.7	6.8	4.9	6.2	1.4	2.6
382301	Sly	Sypc3 like Y-linked	4.4	4.9	6.3	5.9	4.7	6.1	1.4	2.6
27052	Aoah	acyloxyacyl hydrolase	3.4	3.2	4.4	5.0	3.3	4.7	1.4	2.6
20304	Ccl5	chemokine (C-C motif) ligand 5	4.7	5.3	5.1	7.6	5.0	6.4	1.4	2.6
12475	Cd14	CD14 antigen	5.6	5.8	7.1	7.0	5.7	7.1	1.4	2.6
246177	Myo1g	myosin IG	4.3	4.0	5.1	6.0	4.1	5.5	1.4	2.6
17969	Ncf1	neutrophil cytosolic factor 1	5.1	4.5	5.9	6.5	4.8	6.2	1.4	2.6
14960	H2-Aa	histocompatibility 2, class II antigen A, alpha	2.8	2.7	2.6	5.6	2.8	4.1	1.4	2.6
98496	Pid1	phosphotyrosine interaction domain containing 1	4.4	4.3	6.1	5.3	4.3	5.7	1.4	2.6
140497	AF251705	cDNA sequence AF251705	6.2	6.0	7.1	7.9	6.1	7.5	1.4	2.6
387142	Mir24-1	microRNA 24-1	3.3	4.0	5.6	4.5	3.7	5.0	1.4	2.6
67775	Rtp4	receptor transporter protein 4	3.1	2.7	5.4	3.0	2.9	4.2	1.4	2.6
12267	C3ar1	complement component 3a receptor 1	8.0	8.0	9.4	9.3	8.0	9.3	1.4	2.5
13032	Ctsc	cathepsin C	6.5	6.6	7.5	8.3	6.6	7.9	1.4	2.5
735268	Mir680-1	microRNA 680-1	4.4	5.8	6.7	6.2	5.1	6.4	1.3	2.5
50778	Rgs1	regulator of G-protein signaling 1	4.2	4.6	6.1	5.4	4.4	5.7	1.3	2.5
15442	Hpse	heparanase	5.4	5.7	6.3	7.4	5.5	6.9	1.3	2.5
56847	Aldh1a3	aldehyde dehydrogenase family 1, subfamily A3	4.6	4.0	6.2	5.0	4.3	5.6	1.3	2.5
12045	Bcl2a1b	B cell leukemia/lymphoma 2 related protein A1b	7.4	7.1	8.8	8.4	7.3	8.6	1.3	2.5
100628614	Mir5123	microRNA 5123	3.2	3.5	4.5	4.8	3.3	4.7	1.3	2.5
104759	Pld4	phospholipase D family, member 4	6.0	4.4	5.7	7.3	5.2	6.5	1.3	2.5
73329	1700040F15Rik	RIKEN cDNA 1700040F15 gene	4.4	5.6	6.5	6.1	5.0	6.3	1.3	2.5
68738	Acss1	acyl-CoA synthetase short-chain family member 1	2.7	3.4	3.8	4.9	3.1	4.4	1.3	2.5
52855	Lair1	leukocyte-associated Ig-like receptor 1	5.5	5.2	6.9	6.4	5.3	6.7	1.3	2.5
27419	Naglu	alpha-N-acetylglucosaminidase (Sanfilippo disease IIIB)	5.5	4.9	6.0	7.0	5.2	6.5	1.3	2.5
74039	Nfam1	Nfat activating molecule with ITAM motif 1	4.4	4.0	5.2	5.9	4.2	5.5	1.3	2.5
30955	Pik3cg	phosphoinositide-3-kinase, catalytic, gamma polypeptide	4.2	3.9	5.0	5.6	4.0	5.3	1.3	2.5
170744	Tlr8	toll-like receptor 8	4.8	4.6	5.6	6.4	4.7	6.0	1.3	2.5

210293	Dock10	dedicator of cytokinesis 10	5.9	5.7	6.5	7.7	5.8	7.1	1.3	2.5
212937	Tifab	TRAF-interacting protein with forkhead-associated domain, family member B	3.6	3.3	4.2	5.4	3.5	4.8	1.3	2.5
16411	Itgax	integrin alpha X	5.5	6.9	6.3	8.8	6.2	7.5	1.3	2.4
407790	Ndufa4l2	NADH dehydrogenase (ubiquinone) 1 alpha subcomplex, 4-like 2	3.6	6.2	6.3	6.1	4.9	6.2	1.3	2.4
16790	Anpep	alanyl (membrane) aminopeptidase	8.8	9.0	10.0	10.4	8.9	10.2	1.3	2.4
12044	Bcl2a1a	B cell leukemia/lymphoma 2 related protein A1a	6.0	6.3	7.2	7.6	6.2	7.4	1.3	2.4
18187	Nrp2	neuropilin 2	6.7	6.2	7.6	7.9	6.5	7.7	1.3	2.4
71653	4930506M07Rik	RIKEN cDNA 4930506M07 gene	6.1	5.5	6.4	7.7	5.8	7.1	1.3	2.4
60533	Cd274	CD274 antigen	4.7	4.5	4.6	7.1	4.6	5.8	1.3	2.4
18726	Lilra6	leukocyte immunoglobulin-like receptor, subfamily A (with TM domain), member 6	3.7	3.8	4.8	5.2	3.7	5.0	1.3	2.4
228026	Pdk1	pyruvate dehydrogenase kinase, isoenzyme 1	3.8	4.7	5.5	5.4	4.2	5.5	1.3	2.4
13034	Ctse	cathepsin E	3.0	4.3	3.2	6.7	3.7	4.9	1.3	2.4
15163	Hcls1	hematopoietic cell specific Lyn substrate 1	6.1	5.7	7.1	7.2	5.9	7.2	1.3	2.4
16822	Lcp2	lymphocyte cytosolic protein 2	5.3	5.3	6.2	6.9	5.3	6.5	1.3	2.4
237542	Osbp18	oxysterol binding protein-like 8	7.6	7.1	8.6	8.7	7.4	8.6	1.3	2.4
12523	Cd84	CD84 antigen	6.8	7.1	7.8	8.7	7.0	8.2	1.3	2.4
56619	Clec4e	C-type lectin domain family 4, member e	5.4	3.8	5.5	6.2	4.6	5.8	1.3	2.4
211228	Lrrc25	leucine rich repeat containing 25	3.9	4.3	5.0	5.7	4.1	5.3	1.3	2.4
12508	Cd53	CD53 antigen	8.5	8.5	9.6	10.0	8.5	9.8	1.2	2.4
83490	Pik3ap1	phosphoinositide-3-kinase adaptor protein 1	5.5	5.5	6.8	6.6	5.5	6.7	1.2	2.4
56193	Plek	pleckstrin	7.7	7.6	8.6	9.3	7.7	8.9	1.2	2.4
78591	A430104N18Rik	RIKEN cDNA A430104N18 gene	4.5	3.2	4.4	5.7	3.8	5.1	1.2	2.3
72042	Cotl1	coactosin-like 1 (Dictyostelium)	6.7	6.2	7.2	8.2	6.4	7.7	1.2	2.3
101056121	LOC101056121	Y-linked testis-specific protein 1-like	4.2	4.5	5.6	5.6	4.4	5.6	1.2	2.3
56857	Slc37a2	solute carrier family 37 (glycerol-3-phosphate transporter), member 2	5.2	4.7	6.2	6.2	5.0	6.2	1.2	2.3
170743	Tlr7	toll-like receptor 7	4.9	4.8	5.7	6.4	4.8	6.1	1.2	2.3
436467	Trav14-1	T cell receptor alpha variable 14-1	2.9	3.9	4.7	4.5	3.4	4.6	1.2	2.3
53314	Batf	basic leucine zipper transcription factor, ATF-like	3.8	3.7	4.5	5.4	3.7	4.9	1.2	2.3
12493	Cd37	CD37 antigen	4.9	4.7	5.9	6.2	4.8	6.1	1.2	2.3
16414	Itgb2	integrin beta 2	7.3	7.1	7.8	9.1	7.2	8.4	1.2	2.3
56792	Stap1	signal transducing adaptor family member 1	3.4	3.7	5.0	4.6	3.6	4.8	1.2	2.3
239393	Lrp12	low density lipoprotein-related protein 12	6.6	6.4	7.2	8.2	6.5	7.7	1.2	2.3

22368	Trpv2	transient receptor potential cation channel, subfamily V, member 2	6.1	5.6	7.0	7.1	5.8	7.0	1.2	2.3
100504230	AU020206	expressed sequence AU020206	8.0	7.0	8.5	8.8	7.5	8.7	1.2	2.3
212032	Hk3	hexokinase 3	3.8	4.0	5.0	5.2	3.9	5.1	1.2	2.3
80719	Igsf6	immunoglobulin superfamily, member 6	6.0	6.3	6.8	8.0	6.2	7.4	1.2	2.3
78771	Mctp1	multiple C2 domains, transmembrane 1	5.4	4.9	6.1	6.6	5.2	6.3	1.2	2.3
20564	Slit3	slit homolog 3 (Drosophila)	6.3	5.8	7.7	6.8	6.1	7.3	1.2	2.3
216991	Adap2	ArfGAP with dual PH domains 2	4.2	3.8	5.0	5.4	4.0	5.2	1.2	2.3
54725	Cadm1	cell adhesion molecule 1	6.9	5.7	7.4	7.6	6.3	7.5	1.2	2.3
18106	Cd244	CD244 natural killer cell receptor 2B4	3.0	2.8	3.3	4.9	2.9	4.1	1.2	2.3
16154	Il10ra	interleukin 10 receptor, alpha	3.8	4.0	4.8	5.3	3.9	5.1	1.2	2.3
101056060	LOC101056060	Y-linked testis-specific protein 1-like	4.8	5.5	6.4	6.2	5.1	6.3	1.2	2.3
23833	Cd52	CD52 antigen	7.1	6.9	7.7	8.7	7.0	8.2	1.2	2.3
12825	Col3a1	collagen, type III, alpha 1	5.5	5.4	7.0	6.2	5.4	6.6	1.2	2.3
66102	Cxcl16	chemokine (C-X-C motif) ligand 16	6.8	6.4	7.7	7.9	6.6	7.8	1.2	2.3
16331	Inpp5d	inositol polyphosphate-5-phosphatase D	5.8	5.3	6.6	6.9	5.6	6.7	1.2	2.3
68279	Mcoln2	mucoilin 2	5.3	4.4	6.0	6.1	4.9	6.0	1.2	2.3
109225	Ms4a7	membrane-spanning 4-domains, subfamily A, member 7	8.8	8.1	9.9	9.5	8.5	9.7	1.2	2.3
100034251	Wfdc17	WAP four-disulfide core domain 17	9.0	9.3	9.6	11.1	9.2	10.4	1.2	2.3
73149	Clec4a3	C-type lectin domain family 4, member a3	3.1	3.9	4.2	5.1	3.5	4.7	1.2	2.3
16658	Mafb	v-maf musculoaponeurotic fibrosarcoma oncogene family, protein B (avian)	4.9	4.7	5.9	6.1	4.8	6.0	1.2	2.3
245945	Rbm47	RNA binding motif protein 47	4.1	3.9	5.0	5.3	4.0	5.1	1.2	2.3
21938	Tnfrsf1b	tumor necrosis factor receptor superfamily, member 1b	6.8	6.5	7.3	8.4	6.7	7.8	1.2	2.3
57257	Vav3	vav 3 oncogene	3.4	3.0	4.3	4.4	3.2	4.3	1.2	2.3
219144	Arl11	ADP-ribosylation factor-like 11	4.9	4.6	5.7	6.1	4.7	5.9	1.2	2.2
12260	C1qb	complement component 1, q subcomponent, beta polypeptide	8.3	8.1	9.3	9.4	8.2	9.4	1.2	2.2
381654	C87414	expressed sequence C87414	2.3	4.2	4.3	4.6	3.3	4.4	1.2	2.2
108101	Fermt3	fermitin family homolog 3 (Drosophila)	4.6	4.6	5.7	5.9	4.6	5.8	1.2	2.2
207839	Galnt6	UDP-N-acetyl-alpha-D-galactosamine:polypeptide N-acetylgalactosaminyltransferase 6	4.9	4.5	5.4	6.3	4.7	5.9	1.2	2.2
18826	Lcp1	lymphocyte cytosolic protein 1	7.9	7.9	8.9	9.2	7.9	9.1	1.2	2.2
73656	Ms4a6c	membrane-spanning 4-domains, subfamily A, member 6C	4.3	3.8	4.6	5.8	4.1	5.2	1.2	2.2

22368	Trpv2	transient receptor potential cation channel, subfamily V, member 2	6.3	6.1	7.5	7.3	6.2	7.4	1.2	2.2
54445	Unc93b1	unc-93 homolog B1 (C. elegans)	6.6	6.2	7.3	7.8	6.4	7.6	1.2	2.2
12721	Coro1a	coronin, actin binding protein 1A	5.1	5.2	6.3	6.3	5.1	6.3	1.2	2.2
12978	Csf1r	colony stimulating factor 1 receptor	6.7	6.3	7.7	7.7	6.5	7.7	1.2	2.2
20311	Cxcl5	chemokine (C-X-C motif) ligand 5	3.5	4.3	4.6	5.5	3.9	5.1	1.2	2.2
13058	Cybb	cytochrome b-245, beta polypeptide	7.6	7.2	7.9	9.2	7.4	8.6	1.2	2.2
17948	Naip2	NLR family, apoptosis inhibitory protein 2	5.1	4.8	5.8	6.4	5.0	6.1	1.2	2.2
11468	Actg2	actin, gamma 2, smooth muscle, enteric	8.1	7.6	9.4	8.5	7.8	9.0	1.1	2.2
12491	Cd36	CD36 antigen	6.4	7.6	7.1	9.2	7.0	8.2	1.1	2.2
14017	Evi2a	ecotropic viral integration site 2a	5.7	5.7	6.8	6.8	5.7	6.8	1.1	2.2
23880	Fyb	FYN binding protein	5.5	5.0	6.7	6.2	5.3	6.4	1.1	2.2
70719	Hmha1	histocompatibility (minor) HA-1	4.8	4.0	5.6	5.5	4.4	5.5	1.1	2.2
64099	Parvg	parvin, gamma	3.5	3.9	3.7	5.8	3.7	4.8	1.1	2.2
230787	Themis2	thymocyte selection associated family member 2	4.5	4.3	5.1	6.0	4.4	5.5	1.1	2.2
57425	U90926	cDNA sequence U90926	3.9	5.3	4.8	6.7	4.6	5.7	1.1	2.2
12489	Cd33	CD33 antigen	6.0	5.7	5.7	8.2	5.8	7.0	1.1	2.2
14191	Fgr	Gardner-Rasheed feline sarcoma viral (Fgr) oncogene homolog	3.1	3.0	3.0	5.3	3.0	4.2	1.1	2.2
15117	Has2	hyaluronan synthase 2	5.3	5.3	6.4	6.5	5.3	6.5	1.1	2.2
14728	Lilrb4	leukocyte immunoglobulin-like receptor, subfamily B, member 4	9.1	9.5	10.3	10.6	9.3	10.4	1.1	2.2
69189	Mcemp1	mast cell expressed membrane protein 1	3.4	3.1	3.2	5.6	3.3	4.4	1.1	2.2
257662	Olf1290	olfactory receptor 1290	2.3	3.4	4.7	3.4	2.9	4.0	1.1	2.2
241452	Dhrs9	dehydrogenase/reductase (SDR family) member 9	4.0	4.2	5.2	5.3	4.1	5.3	1.1	2.2
56743	Lat2	linker for activation of T cells family, member 2	6.3	6.3	7.4	7.4	6.3	7.4	1.1	2.2
11846	Arg1	arginase, liver	3.8	3.4	4.3	5.2	3.6	4.7	1.1	2.2
665521	BC080696	cDNA sequence BC080696	3.5	4.0	4.7	5.0	3.7	4.8	1.1	2.2
18830	Pltp	phospholipid transfer protein	5.4	5.5	7.1	6.1	5.5	6.6	1.1	2.2
218442	Serinc5	serine incorporator 5	5.2	5.0	5.7	6.7	5.1	6.2	1.1	2.2
171209	Asic3	acid-sensing (proton-gated) ion channel 3	3.1	3.3	5.1	3.5	3.2	4.3	1.1	2.1
232975	Atp1a3	ATPase, Na ⁺ /K ⁺ transporting, alpha 3 polypeptide	5.6	5.3	6.0	7.2	5.5	6.6	1.1	2.1
20305	Ccl6	chemokine (C-C motif) ligand 6	6.6	7.8	6.5	10.1	7.2	8.3	1.1	2.1
329679	Fnip2	folliculin interacting protein 2	6.2	6.5	7.1	7.7	6.3	7.4	1.1	2.1
83924	Gpr137b	G protein-coupled receptor 137B	6.4	5.8	6.8	7.6	6.1	7.2	1.1	2.1

15950	Ifi203	interferon activated gene 203	3.4	3.1	5.0	3.7	3.2	4.3	1.1	2.1
213391	Rassf4	Ras association (RalGDS/AF-6) domain family member 4	4.6	3.4	4.9	5.3	4.0	5.1	1.1	2.1
76408	Abcc3	ATP-binding cassette, sub-family C (CFTR/MRP), member 3	5.0	4.2	5.9	5.5	4.6	5.7	1.1	2.1
620551	LOC620551	PRAME family member 5-like	3.3	3.9	4.8	4.5	3.6	4.7	1.1	2.1
20354	Sema4d	sema domain, immunoglobulin domain (Ig), transmembrane domain (TM) and short cytoplasmic domain, (semaphorin) 4D	4.3	4.1	5.1	5.4	4.2	5.3	1.1	2.1
20612	Siglec1	sialic acid binding Ig-like lectin 1, sialoadhesin	4.6	4.0	5.0	5.8	4.3	5.4	1.1	2.1
65221	Slc15a3	solute carrier family 15, member 3	7.3	7.4	8.1	8.8	7.3	8.4	1.1	2.1
320148	B430306N03Rik	RIKEN cDNA B430306N03 gene	4.2	4.1	4.7	5.7	4.1	5.2	1.1	2.1
12229	Btk	Bruton agammaglobulinemia tyrosine kinase	4.3	4.0	5.1	5.4	4.1	5.2	1.1	2.1
17474	Clec4d	C-type lectin domain family 4, member d	8.4	8.2	9.1	9.6	8.3	9.3	1.1	2.1
100316820	Mir1970	microRNA 1970	3.8	3.7	4.9	4.8	3.8	4.9	1.1	2.1
100628621	Mir3961	microRNA 3961	4.9	4.0	5.6	5.4	4.4	5.5	1.1	2.1
20611	Ssty1	spermiogenesis specific transcript on the Y 1	5.0	5.9	6.6	6.4	5.4	6.5	1.1	2.1
226409	Zranb3	zinc finger, RAN-binding domain containing 3	4.3	4.6	5.2	5.9	4.5	5.6	1.1	2.1
232201	Arhgap25	Rho GTPase activating protein 25	4.8	5.4	5.7	6.7	5.1	6.2	1.1	2.1
380732	Milr1	mast cell immunoglobulin like receptor 1	4.5	4.4	5.5	5.4	4.4	5.5	1.1	2.1
320024	Nceh1	neutral cholesterol ester hydrolase 1	8.0	7.9	8.9	9.2	8.0	9.0	1.1	2.1
14051	Eya4	eyes absent 4 homolog (Drosophila)	3.3	2.8	4.4	3.8	3.1	4.1	1.1	2.1
67731	Fbxo32	F-box protein 32	4.3	4.3	4.7	6.0	4.3	5.4	1.1	2.1
14176	Fgf5	fibroblast growth factor 5	4.1	3.8	4.4	5.6	3.9	5.0	1.1	2.1
237436	Gas2l3	growth arrest-specific 2 like 3	5.2	5.7	6.1	6.9	5.4	6.5	1.1	2.1
16114	Igk-V28	immunoglobulin kappa chain variable 28 (V28)	4.9	4.3	5.8	5.5	4.6	5.7	1.1	2.1
319480	Itga11	integrin alpha 11	4.0	4.0	6.1	4.0	4.0	5.1	1.1	2.1
320024	Nceh1	neutral cholesterol ester hydrolase 1	8.0	7.9	9.0	9.1	8.0	9.1	1.1	2.1
20846	Stat1	signal transducer and activator of transcription 1	5.9	5.6	7.2	6.5	5.8	6.8	1.1	2.1
12053	Bcl6	B cell leukemia/lymphoma 6	6.4	6.1	7.6	7.0	6.2	7.3	1.1	2.1
12606	Cebpa	CCAAT/enhancer binding protein (C/EBP), alpha	4.6	4.3	5.3	5.7	4.4	5.5	1.1	2.1
19141	Lgmn	legumain	8.4	8.3	9.3	9.4	8.3	9.4	1.1	2.1
241633	Atp8b4	ATPase, class I, type 8B, member 4	3.2	3.1	4.1	4.3	3.2	4.2	1.0	2.1
12362	Casp1	caspase 1	5.5	5.8	6.8	6.6	5.7	6.7	1.0	2.1
100628574	Mir28b	microRNA 28b	4.0	5.3	6.1	5.2	4.6	5.7	1.0	2.1

19200	Pstpip1	proline-serine-threonine phosphatase-interacting protein 1	5.0	5.3	5.9	6.4	5.1	6.2	1.0	2.1
18173	Slc11a1	solute carrier family 11 (proton-coupled divalent metal ion transporters), member 1	5.0	4.9	5.5	6.4	4.9	6.0	1.0	2.1
18636	Cfp	complement factor properdin	5.1	4.4	5.1	6.4	4.8	5.8	1.0	2.0
14127	Fcer1g	Fc receptor, IgE, high affinity I, gamma polypeptide	9.6	9.2	10.4	10.5	9.4	10.5	1.0	2.0
16186	Il2rg	interleukin 2 receptor, gamma chain	6.4	6.1	6.6	8.0	6.2	7.3	1.0	2.0
17101	Lyst	lysosomal trafficking regulator	5.5	5.6	6.3	6.9	5.6	6.6	1.0	2.0
667742	Piezo2	piezo-type mechanosensitive ion channel component 2	3.6	4.2	5.4	4.4	3.9	4.9	1.0	2.0
19332	Rab20	RAB20, member RAS oncogene family	4.4	4.1	5.4	5.2	4.3	5.3	1.0	2.0
11980	Atp8a1	ATPase, aminophospholipid transporter (APLT), class I, type 8A, member 1	3.6	3.4	4.2	4.8	3.5	4.5	1.0	2.0
14247	Fli1	Friend leukemia integration 1	5.4	5.4	6.2	6.7	5.4	6.4	1.0	2.0
211401	Mtss1	metastasis suppressor 1	6.6	6.5	7.7	7.4	6.5	7.6	1.0	2.0
17951	Naip5	NLR family, apoptosis inhibitory protein 5	4.1	3.5	4.1	5.5	3.8	4.8	1.0	2.0
241062	Pgap1	post-GPI attachment to proteins 1	5.2	5.4	5.6	7.1	5.3	6.3	1.0	2.0
19850	Rnu3a	U3A small nuclear RNA	3.2	3.3	4.2	4.3	3.2	4.3	1.0	2.0
69583	Tnfsf13	tumor necrosis factor (ligand) superfamily, member 13	6.0	6.0	6.8	7.3	6.0	7.0	1.0	2.0
20303	Ccl4	chemokine (C-C motif) ligand 4	5.7	6.1	6.9	6.9	5.9	6.9	1.0	2.0
12483	Cd22	CD22 antigen	3.7	3.8	4.1	5.5	3.8	4.8	1.0	2.0
234356	Csgalnact1	chondroitin sulfate N-acetylgalactosaminyltransferase 1	3.5	3.4	5.2	3.7	3.5	4.5	1.0	2.0
100041034	LOC100041034	Sp110 nuclear body protein-like	5.8	5.3	6.4	6.7	5.5	6.5	1.0	2.0
320139	Ptpn7	protein tyrosine phosphatase, non-receptor type 7	4.2	4.1	5.1	5.3	4.2	5.2	1.0	2.0
57319	Smpdl3a	sphingomyelin phosphodiesterase, acid-like 3A	6.7	6.4	7.3	7.9	6.6	7.6	1.0	2.0
652925	Tmem243	transmembrane protein 243, mitochondrial	3.8	4.2	4.8	5.3	4.0	5.0	1.0	2.0
12262	C1qc	complement component 1, q subcomponent, C chain	7.1	7.2	8.1	8.1	7.1	8.1	1.0	2.0
101056308	LOC101056308	Y-linked testis-specific protein 1-like	3.5	3.9	4.9	4.5	3.7	4.7	1.0	2.0
140795	P2ry14	purinergic receptor P2Y, G-protein coupled, 14	3.2	3.7	3.6	5.3	3.5	4.5	1.0	2.0
11835	Ar	androgen receptor	5.1	4.9	3.8	4.1	5.0	4.0	-1.0	-2.0
19716	Bex1	brain expressed gene 1	5.7	6.4	3.2	6.9	6.1	5.1	-1.0	-2.0
241520	Fam171b	family with sequence similarity 171, member B	4.3	4.8	3.5	3.6	4.5	3.5	-1.0	-2.0
18481	Pak3	p21 protein (Cdc42/Rac)-activated kinase 3	4.8	4.7	3.8	3.7	4.7	3.7	-1.0	-2.0

76969	Chst1	carbohydrate (keratan sulfate Gal-6) sulfotransferase 1	4.6	4.6	3.9	3.2	4.6	3.6	-1.0	-2.0
71785	Pdgfd	platelet-derived growth factor, D polypeptide	6.6	5.9	5.6	4.8	6.2	5.2	-1.0	-2.0
20289	Scx	scleraxis	3.4	4.8	2.8	3.3	4.1	3.1	-1.0	-2.0
21873	Tjp2	tight junction protein 2	6.6	6.2	5.3	5.4	6.4	5.4	-1.0	-2.0
217310	Hid1	HID1 domain containing	4.7	5.0	3.7	3.9	4.8	3.8	-1.0	-2.0
100604	Lrrc8c	leucine rich repeat containing 8 family, member C	8.2	8.1	6.6	7.7	8.2	7.1	-1.0	-2.0
14013	Mecom	MDS1 and EVI1 complex locus	4.1	4.1	3.1	3.0	4.1	3.1	-1.0	-2.0
235505	Cd109	CD109 antigen	7.0	8.2	6.4	6.7	7.6	6.6	-1.0	-2.1
12583	Cdo1	cysteine dioxygenase 1, cytosolic	7.9	8.6	7.1	7.3	8.2	7.2	-1.0	-2.1
13874	Ereg	epiregulin	8.7	8.3	7.2	7.8	8.5	7.5	-1.0	-2.1
22762	Zfp2	zinc finger protein, multitype 2	5.7	5.4	4.7	4.3	5.5	4.5	-1.0	-2.1
18214	Ddr2	discoidin domain receptor family, member 2	7.5	7.4	6.9	6.0	7.5	6.4	-1.1	-2.1
74754	Dhcr24	24-dehydrocholesterol reductase	7.4	7.5	6.7	6.1	7.5	6.4	-1.1	-2.1
66203	Lce1m	late cornified envelope 1M	5.3	4.6	3.9	3.9	4.9	3.9	-1.1	-2.1
19223	Ptgis	prostaglandin I2 (prostacyclin) synthase	7.5	8.2	6.7	6.9	7.8	6.8	-1.1	-2.1
216363	Rab3ip	RAB3A interacting protein	7.4	7.5	6.6	6.1	7.4	6.4	-1.1	-2.1
24052	Sgcd	sarcoglycan, delta (dystrophin-associated glycoprotein)	5.7	5.7	4.5	4.8	5.7	4.7	-1.1	-2.1
20983	Syt4	synaptotagmin IV	5.9	3.3	3.5	3.5	4.6	3.5	-1.1	-2.1
11752	Anxa8	annexin A8	4.6	4.6	3.7	3.4	4.6	3.6	-1.1	-2.1
14457	Gas7	growth arrest specific 7	6.1	5.8	4.4	5.4	5.9	4.9	-1.1	-2.1
69884	2010300F17Rik	RIKEN cDNA 2010300F17 gene	5.8	4.3	4.0	3.9	5.0	4.0	-1.1	-2.1
320692	9430037G07Rik	RIKEN cDNA 9430037G07 gene	5.4	3.9	3.5	3.6	4.6	3.6	-1.1	-2.1
20315	Cxcl12	chemokine (C-X-C motif) ligand 12	9.1	10.1	8.6	8.5	9.6	8.5	-1.1	-2.1
207683	Igsf11	immunoglobulin superfamily, member 11	6.8	6.6	5.0	6.3	6.7	5.6	-1.1	-2.1
107065	Lrrtm2	leucine rich repeat transmembrane neuronal 2	4.2	4.6	3.2	3.5	4.4	3.3	-1.1	-2.1
68458	Ppp1r14a	protein phosphatase 1, regulatory (inhibitor) subunit 14A	4.6	3.4	3.2	2.8	4.0	3.0	-1.1	-2.1
240725	Sulf1	sulfatase 1	9.3	9.5	8.7	8.0	9.4	8.4	-1.1	-2.1
69953	2810025M15Rik	RIKEN cDNA 2810025M15 gene	7.2	8.0	6.4	6.7	7.6	6.5	-1.1	-2.1
68567	Cgref1	cell growth regulator with EF hand domain 1	6.3	6.0	4.9	5.3	6.2	5.1	-1.1	-2.1
15551	Htr1b	5-hydroxytryptamine (serotonin) receptor 1B	6.2	5.6	4.7	5.0	5.9	4.8	-1.1	-2.1
381493	S100a7a	S100 calcium binding protein A7A	6.1	4.9	4.1	4.8	5.5	4.4	-1.1	-2.1
56496	Tspan6	tetraspanin 6	8.3	7.6	7.1	6.6	7.9	6.8	-1.1	-2.1
70892	Ttll7	tubulin tyrosine ligase-like family, member 7	5.5	6.1	4.8	4.7	5.8	4.7	-1.1	-2.1

14266	Aff2	AF4/FMR2 family, member 2	5.5	5.2	4.7	3.8	5.4	4.3	-1.1	-2.1
104943	Fam110c	family with sequence similarity 110, member C	4.6	4.2	3.3	3.3	4.4	3.3	-1.1	-2.1
14205	Figf	c-fos induced growth factor	6.3	7.3	6.6	4.9	6.8	5.8	-1.1	-2.1
20378	Frzb	frizzled-related protein	6.6	7.7	6.4	5.6	7.1	6.0	-1.1	-2.1
16447	Ivl	involucrin	6.5	4.3	4.0	4.6	5.4	4.3	-1.1	-2.1
21956	Tnnt2	troponin T2, cardiac	5.7	5.8	4.3	5.0	5.8	4.7	-1.1	-2.1
12269	C4bp	complement component 4 binding protein	4.9	4.8	4.1	3.4	4.9	3.8	-1.1	-2.1
12389	Cav1	caveolin 1, caveolae protein	8.1	7.7	6.6	6.9	7.9	6.8	-1.1	-2.1
73379	Dcbl2	discoidin, CUB and LCCL domain containing 2	7.4	6.9	6.5	5.6	7.1	6.0	-1.1	-2.1
67350	1700084E18Rik	RIKEN cDNA 1700084E18 gene	4.8	3.9	3.1	3.4	4.3	3.2	-1.1	-2.2
66175	Mustn1	musculoskeletal, embryonic nuclear protein 1	9.8	8.6	8.7	7.5	9.2	8.1	-1.1	-2.2
269233	Fam171a1	family with sequence similarity 171, member A1	6.3	6.6	5.1	5.6	6.4	5.3	-1.1	-2.2
329628	Fat4	FAT tumor suppressor homolog 4 (Drosophila)	5.2	5.2	4.2	4.1	5.2	4.1	-1.1	-2.2
77446	Heg1	HEG homolog 1 (zebrafish)	7.7	8.2	7.4	6.3	7.9	6.8	-1.1	-2.2
100503380	Snhg4	small nucleolar RNA host gene 4	4.7	4.2	3.1	3.4	4.4	3.3	-1.1	-2.2
23876	Fbln5	fibulin 5	8.4	8.9	8.2	6.8	8.6	7.5	-1.1	-2.2
16008	Igfbp2	insulin-like growth factor binding protein 2	6.5	7.8	6.7	5.4	7.2	6.1	-1.1	-2.2
233726	Ipo7	importin 7	7.9	7.4	6.5	6.5	7.6	6.5	-1.1	-2.2
13642	Efnb2	ephrin B2	7.8	7.7	6.6	6.7	7.8	6.6	-1.1	-2.2
67374	Jam2	junction adhesion molecule 2	8.8	9.2	7.8	7.9	9.0	7.9	-1.1	-2.2
68404	Nrn1	neuritin 1	7.1	7.6	5.4	7.0	7.4	6.2	-1.1	-2.2
71720	Osbpl3	oxysterol binding protein-like 3	4.8	5.0	3.4	4.1	4.9	3.7	-1.1	-2.2
19243	Ptp4a1	protein tyrosine phosphatase 4a1	6.4	5.8	4.6	5.4	6.1	5.0	-1.1	-2.2
72780	Rspo3	R-spondin 3 homolog (Xenopus laevis)	6.2	6.4	6.0	4.4	6.3	5.2	-1.1	-2.2
217410	Trib2	tribbles homolog 2 (Drosophila)	5.9	6.3	5.3	4.6	6.1	4.9	-1.1	-2.2
12064	Bdnf	brain derived neurotrophic factor	5.6	5.2	4.5	4.0	5.4	4.3	-1.2	-2.2
14677	Gnai1	guanine nucleotide binding protein (G protein), alpha inhibiting 1	6.3	7.0	5.6	5.5	6.7	5.5	-1.2	-2.2
22160	Twist1	twist basic helix-loop-helix transcription factor 1	6.1	6.5	5.3	5.0	6.3	5.1	-1.2	-2.2
73720	Cst6	cystatin E/M	5.4	5.3	4.3	4.1	5.3	4.2	-1.2	-2.2
319146	Ifnz	interferon zeta	5.2	4.5	3.8	3.7	4.9	3.7	-1.2	-2.2
23959	Nt5e	5' nucleotidase, ecto	4.7	4.3	3.1	3.5	4.5	3.3	-1.2	-2.3
19272	Ptprk	protein tyrosine phosphatase, receptor type, K	7.0	6.9	5.6	6.0	7.0	5.8	-1.2	-2.3
20197	S100a3	S100 calcium binding protein A3	5.3	5.1	3.9	4.1	5.2	4.0	-1.2	-2.3

100217453	Snord16a	small nucleolar RNA, C/D box 16A	7.0	6.5	5.3	5.8	6.7	5.6	-1.2	-2.3
11421	Ace	angiotensin I converting enzyme (peptidyl-dipeptidase A) 1	3.4	4.8	2.9	2.9	4.1	2.9	-1.2	-2.3
170757	Eltf1	EGF, latrophilin seven transmembrane domain containing 1	5.1	3.6	3.1	3.2	4.4	3.2	-1.2	-2.3
53614	Reck	reversion-inducing-cysteine-rich protein with kazal motifs	6.9	7.4	6.1	5.8	7.2	6.0	-1.2	-2.3
58994	Smpd3	sphingomyelin phosphodiesterase 3, neutral	5.4	4.4	3.8	3.7	4.9	3.7	-1.2	-2.3
13797	Emx2	empty spiracles homeobox 2	5.2	4.0	3.7	3.1	4.6	3.4	-1.2	-2.3
16773	Lama2	laminin, alpha 2	6.2	6.3	5.0	5.1	6.3	5.1	-1.2	-2.3
17386	Mmp13	matrix metalloproteinase 13	8.3	9.1	6.8	8.1	8.7	7.5	-1.2	-2.3
22329	Vcam1	vascular cell adhesion molecule 1	8.2	8.3	7.2	6.9	8.2	7.0	-1.2	-2.3
217887	BC022687	cDNA sequence BC022687	6.7	6.6	5.4	5.4	6.6	5.4	-1.2	-2.3
19224	Ptgs1	prostaglandin-endoperoxide synthase 1	7.1	7.8	5.9	6.5	7.4	6.2	-1.2	-2.3
14611	Gja3	gap junction protein, alpha 3	5.1	3.5	3.2	2.8	4.3	3.0	-1.2	-2.3
13876	Erg	avian erythroblastosis virus E-26 (v-ets) oncogene related	4.6	4.4	3.2	3.3	4.5	3.3	-1.2	-2.3
16669	Krt19	keratin 19	4.5	4.6	3.4	3.3	4.6	3.3	-1.2	-2.3
216459	Myl6b	myosin, light polypeptide 6B	5.6	5.5	4.5	4.2	5.6	4.3	-1.2	-2.3
18788	Serpinb2	serine (or cysteine) peptidase inhibitor, clade B, member 2	7.8	6.1	4.1	7.3	6.9	5.7	-1.2	-2.3
20042	Rps12	ribosomal protein S12	4.9	4.6	3.3	3.7	4.7	3.5	-1.2	-2.4
97848	Serpinb6c	serine (or cysteine) peptidase inhibitor, clade B, member 6c	7.1	5.7	5.7	4.5	6.4	5.1	-1.3	-2.4
23967	Osr1	odd-skipped related 1 (Drosophila)	7.9	9.0	7.6	6.8	8.5	7.2	-1.3	-2.4
16367	Irs1	insulin receptor substrate 1	6.2	5.7	4.8	4.6	6.0	4.7	-1.3	-2.4
13395	Dlx5	distal-less homeobox 5	3.0	5.2	3.0	2.6	4.1	2.8	-1.3	-2.4
110454	Ly6a	lymphocyte antigen 6 complex, locus A	8.1	10.1	8.1	7.6	9.1	7.9	-1.3	-2.4
73904	4833412C05Rik	RIKEN cDNA 4833412C05 gene	5.9	4.9	3.9	4.3	5.4	4.1	-1.3	-2.4
14461	Gata2	GATA binding protein 2	4.7	4.3	3.3	3.1	4.5	3.2	-1.3	-2.5
279653	Pcdh19	protocadherin 19	7.3	6.7	5.9	5.6	7.0	5.7	-1.3	-2.5
109294	Prex2	phosphatidylinositol-3,4,5-trisphosphate-dependent Rac exchange factor 2	5.5	5.5	4.3	4.1	5.5	4.2	-1.3	-2.5
229672	Bcl2l15	BCL2-like 15	5.4	4.9	3.1	4.7	5.2	3.9	-1.3	-2.5
216616	Efemp1	epidermal growth factor-containing fibulin-like extracellular matrix protein 1	7.9	9.6	7.8	7.1	8.8	7.5	-1.3	-2.5
11668	Aldh1a1	aldehyde dehydrogenase family 1, subfamily A1	7.8	7.0	6.6	5.5	7.4	6.1	-1.3	-2.5
407828	BC023969	cDNA sequence BC023969	3.8	5.7	3.3	3.5	4.7	3.4	-1.3	-2.5
216831	Arhgap44	Rho GTPase activating protein 44	6.4	6.4	5.3	4.9	6.4	5.1	-1.3	-2.5
211323	Nrg1	neuregulin 1	6.6	5.6	4.8	4.7	6.1	4.8	-1.3	-2.5

16398	Itga2	integrin alpha 2	6.5	6.7	4.6	5.8	6.6	5.2	-1.4	-2.6
433619	Kprp	keratinocyte expressed, proline-rich	7.2	5.5	5.0	4.8	6.3	4.9	-1.4	-2.7
27273	Pdk4	pyruvate dehydrogenase kinase, isoenzyme 4	7.5	6.6	5.5	5.8	7.1	5.6	-1.4	-2.7
94242	Tinagl1	tubulointerstitial nephritis antigen-like 1	6.7	7.3	5.5	5.7	7.0	5.6	-1.4	-2.7
14600	Ghr	growth hormone receptor	7.7	7.4	6.3	6.1	7.6	6.2	-1.4	-2.7
73738	Haus7	HAUS augmin-like complex, subunit 7	5.6	6.4	4.7	4.5	6.0	4.6	-1.4	-2.7
15483	Hsd11b1	hydroxysteroid 11-beta dehydrogenase 1	5.3	7.2	5.0	4.6	6.2	4.8	-1.4	-2.7
29818	Hspb7	heat shock protein family, member 7 (cardiovascular)	7.6	8.1	6.4	6.4	7.9	6.4	-1.4	-2.7
11731	Ang2	angiogenin, ribonuclease A family, member 2	7.4	7.7	5.9	6.2	7.5	6.0	-1.5	-2.8
12161	Bmp6	bone morphogenetic protein 6	5.0	4.8	3.6	3.2	4.9	3.4	-1.5	-2.8
73173	Pcdh18	protocadherin 18	6.8	6.1	5.2	4.8	6.4	5.0	-1.5	-2.8
223881	Rnd1	Rho family GTPase 1	5.8	6.1	4.5	4.5	6.0	4.5	-1.5	-2.8
110058	Syt17	synaptotagmin XVII	7.0	7.0	5.2	5.9	7.0	5.5	-1.5	-2.8
54195	Gucy1b3	guanylate cyclase 1, soluble, beta 3	6.2	5.3	4.1	4.4	5.8	4.3	-1.5	-2.8
19124	Procr	protein C receptor, endothelial	8.0	6.8	5.8	6.1	7.4	5.9	-1.5	-2.8
654795	Sdr39u1	short chain dehydrogenase/reductase family 39U, member 1	7.1	4.8	4.1	4.9	6.0	4.5	-1.5	-2.8
56429	Dpt	dermatopontin	6.9	5.8	4.4	5.3	6.4	4.8	-1.5	-2.8
224792	Gpr116	G protein-coupled receptor 116	4.9	4.3	3.0	3.1	4.6	3.1	-1.5	-2.9
26415	Mapk13	mitogen-activated protein kinase 13	6.6	6.6	4.8	5.4	6.6	5.1	-1.5	-2.9
18383	Tnfrsf11b	tumor necrosis factor receptor superfamily, member 11b (osteoprotegerin)	7.6	7.9	6.5	6.0	7.8	6.2	-1.5	-2.9
13024	Ctla2a	cytotoxic T lymphocyte- associated protein 2 alpha	9.5	8.7	7.9	7.2	9.1	7.6	-1.5	-2.9
76400	Pbp2	phosphatidylethanolamine binding protein 2	5.7	4.6	4.0	3.2	5.1	3.6	-1.5	-2.9
228765	Sdcbp2	syndecan binding protein (syntenin) 2	7.0	5.4	4.7	4.6	6.2	4.7	-1.5	-2.9
20706	Serpib9b	serine (or cysteine) peptidase inhibitor, clade B, member 9b	9.4	9.1	8.0	7.4	9.2	7.7	-1.5	-2.9
12484	Cd24a	CD24a antigen	9.4	8.5	6.3	8.6	9.0	7.4	-1.6	-3.0
14858	Gsta2	glutathione S-transferase, alpha 2 (Yc2)	5.7	6.1	4.4	4.2	5.9	4.3	-1.6	-3.0
20682	Sox9	SRY (sex determining region Y)- box 9	5.1	6.6	3.9	4.6	5.8	4.2	-1.6	-3.0
22634	Plagl1	pleiomorphic adenoma gene- like 1	5.6	6.3	3.5	5.2	6.0	4.4	-1.6	-3.0
12349	Car2	carbonic anhydrase 2	6.1	5.2	3.8	4.3	5.7	4.0	-1.6	-3.1
268977	Ltbp1	latent transforming growth factor beta binding protein 1	6.7	7.4	5.2	5.6	7.0	5.4	-1.6	-3.1
13614	Edn1	endothelin 1	8.8	7.8	6.6	6.8	8.3	6.7	-1.7	-3.2

13640	Efna5	ephrin A5	6.2	6.6	4.3	5.1	6.4	4.7	-1.7	-3.2
11459	Acta1	actin, alpha 1, skeletal muscle	8.8	7.7	5.6	7.6	8.2	6.6	-1.7	-3.2
232431	Gprc5a	G protein-coupled receptor, family C, group 5, member A	4.6	4.8	2.6	3.4	4.7	3.0	-1.7	-3.2
68178	Cgnl1	cingulin-like 1	7.7	7.3	5.6	6.1	7.5	5.8	-1.7	-3.2
68052	Rps13	ribosomal protein S13	4.3	4.5	2.6	2.8	4.4	2.7	-1.7	-3.2
11435	Chrna1	cholinergic receptor, nicotinic, alpha polypeptide 1 (muscle)	3.7	5.1	2.7	2.7	4.4	2.7	-1.7	-3.3
14368	Fzd6	frizzled homolog 6 (Drosophila)	5.8	4.7	3.4	3.6	5.2	3.5	-1.7	-3.3
16400	Itga3	integrin alpha 3	5.4	5.1	3.3	3.7	5.2	3.5	-1.7	-3.3
64058	Perp	PERP, TP53 apoptosis effector	6.2	5.0	3.9	3.9	5.6	3.9	-1.7	-3.3
17389	Mmp16	matrix metalloproteinase 16	4.7	5.1	3.3	3.1	4.9	3.2	-1.7	-3.3
320092	E030003E18Rik	RIKEN cDNA E030003E18 gene	5.9	5.1	4.5	3.1	5.5	3.8	-1.8	-3.4
224093	Fam43a	family with sequence similarity 43, member A	6.3	6.6	5.2	4.2	6.5	4.7	-1.8	-3.4
20324	Sdpr	serum deprivation response	8.9	9.5	7.5	7.4	9.2	7.4	-1.8	-3.4
13717	Eln	elastin	5.1	6.6	4.0	4.1	5.8	4.0	-1.8	-3.5
67718	Lce1h	late cornified envelope 1H	7.7	3.3	3.7	3.7	5.5	3.7	-1.8	-3.5
20708	Serpinb6b	serine (or cysteine) peptidase inhibitor, clade B, member 6b	8.3	7.9	6.7	5.9	8.1	6.3	-1.8	-3.5
14725	Lrp2	low density lipoprotein receptor-related protein 2	5.2	4.1	2.8	2.9	4.7	2.8	-1.8	-3.5
16891	Lipg	lipase, endothelial	5.0	4.6	2.7	3.2	4.8	3.0	-1.8	-3.6
67828	Lce1f	late cornified envelope 1F	7.2	3.1	3.3	3.2	5.1	3.3	-1.9	-3.6
18104	Nqo1	NAD(P)H dehydrogenase, quinone 1	7.3	7.4	5.0	5.9	7.3	5.5	-1.9	-3.7
105450	Mmrn2	multimerin 2	6.3	5.3	3.7	4.1	5.8	3.9	-1.9	-3.8
71690	Esm1	endothelial cell-specific molecule 1	8.1	8.2	5.9	6.5	8.2	6.2	-1.9	-3.8
94253	Hecw1	HECT, C2 and WW domain containing E3 ubiquitin protein ligase 1	6.1	4.9	3.8	3.2	5.5	3.5	-2.0	-4.1
105349	Akr1c18	aldo-keto reductase family 1, member C18	5.6	8.0	4.0	5.3	6.8	4.7	-2.1	-4.3
101772	Ano1	anoctamin 1, calcium activated chloride channel	5.1	4.7	2.7	2.8	4.9	2.7	-2.1	-4.4
21892	Tll1	tolloid-like	8.4	8.0	5.6	6.5	8.2	6.1	-2.1	-4.4
69325	1700012B09Rik	RIKEN cDNA 1700012B09 gene	5.8	6.9	3.7	4.5	6.4	4.1	-2.3	-4.9
12159	Bmp4	bone morphogenetic protein 4	7.5	7.8	6.6	4.1	7.7	5.4	-2.3	-5.1
319154	Hist2h3b	histone cluster 2, H3b	6.2	4.5	2.5	3.5	5.4	3.0	-2.4	-5.2
22268	Upk1b	uroplakin 1B	9.2	5.8	4.3	5.9	7.5	5.1	-2.4	-5.2
12490	Cd34	CD34 antigen	7.0	5.8	3.5	4.5	6.4	4.0	-2.4	-5.3
114301	Palmd	palmdelphin	6.1	5.2	3.3	3.1	5.6	3.2	-2.4	-5.4
20344	Selp	selectin, platelet	6.3	6.5	3.9	4.1	6.4	4.0	-2.5	-5.5
59308	Emcn	endomucin	9.3	8.1	6.0	6.5	8.7	6.2	-2.5	-5.6
18613	Pecam1	platelet/endothelial cell adhesion molecule 1	6.7	6.3	3.9	4.1	6.5	4.0	-2.5	-5.6

12562	Cdh5	cadherin 5	8.7	7.0	5.0	5.7	7.8	5.3	-2.5	-5.7
18812	Prl2c3	prolactin family 2, subfamily c, member 3	9.5	9.0	6.4	6.6	9.2	6.5	-2.7	-6.6
18812	Prl2c3	prolactin family 2, subfamily c, member 3	9.3	9.0	6.2	6.6	9.1	6.4	-2.7	-6.7
223272	Itgbl1	integrin, beta-like 1	7.6	7.7	4.5	5.2	7.6	4.9	-2.8	-6.7
76294	Asb5	ankyrin repeat and SOCs box-containing 5	7.8	6.9	3.7	5.4	7.3	4.6	-2.8	-6.8
240873	Tnfsf18	tumor necrosis factor (ligand) superfamily, member 18	9.1	7.0	4.5	6.0	8.0	5.2	-2.8	-7.1
20753	Sprr1a	small proline-rich protein 1A	8.6	9.6	5.4	7.1	9.1	6.2	-2.8	-7.2
19263	Ptprb	protein tyrosine phosphatase, receptor type, B	6.5	6.4	3.7	3.5	6.4	3.6	-2.9	-7.4
228576	Mall	mal, T cell differentiation protein-like	8.2	5.7	4.4	3.6	7.0	4.0	-3.0	-7.9
72381	2210409E12Rik	transcription elongation factor B (SIII), polypeptide 2 pseudogene	6.4	6.0	4.0	2.3	6.2	3.2	-3.0	-8.1
12319	Car8	carbonic anhydrase 8	7.3	7.2	4.4	4.0	7.2	4.2	-3.0	-8.1
68632	Myct1	myc target 1	7.4	6.7	3.9	4.2	7.1	4.0	-3.0	-8.1
74175	Crct1	cysteine-rich C-terminal 1	6.6	6.4	3.1	3.8	6.5	3.4	-3.1	-8.3
224796	Clic5	chloride intracellular channel 5	6.4	6.9	2.9	3.1	6.7	3.0	-3.7	-12.6

Figure S1. Arterial trees dissected from *Cre(-)*, *SM22 α -Cre(+)*, and *aP2-Cre(+)* *MMP14^{F/F}Apoe^{-/-}* male and female mice after a 12-week Western diet.

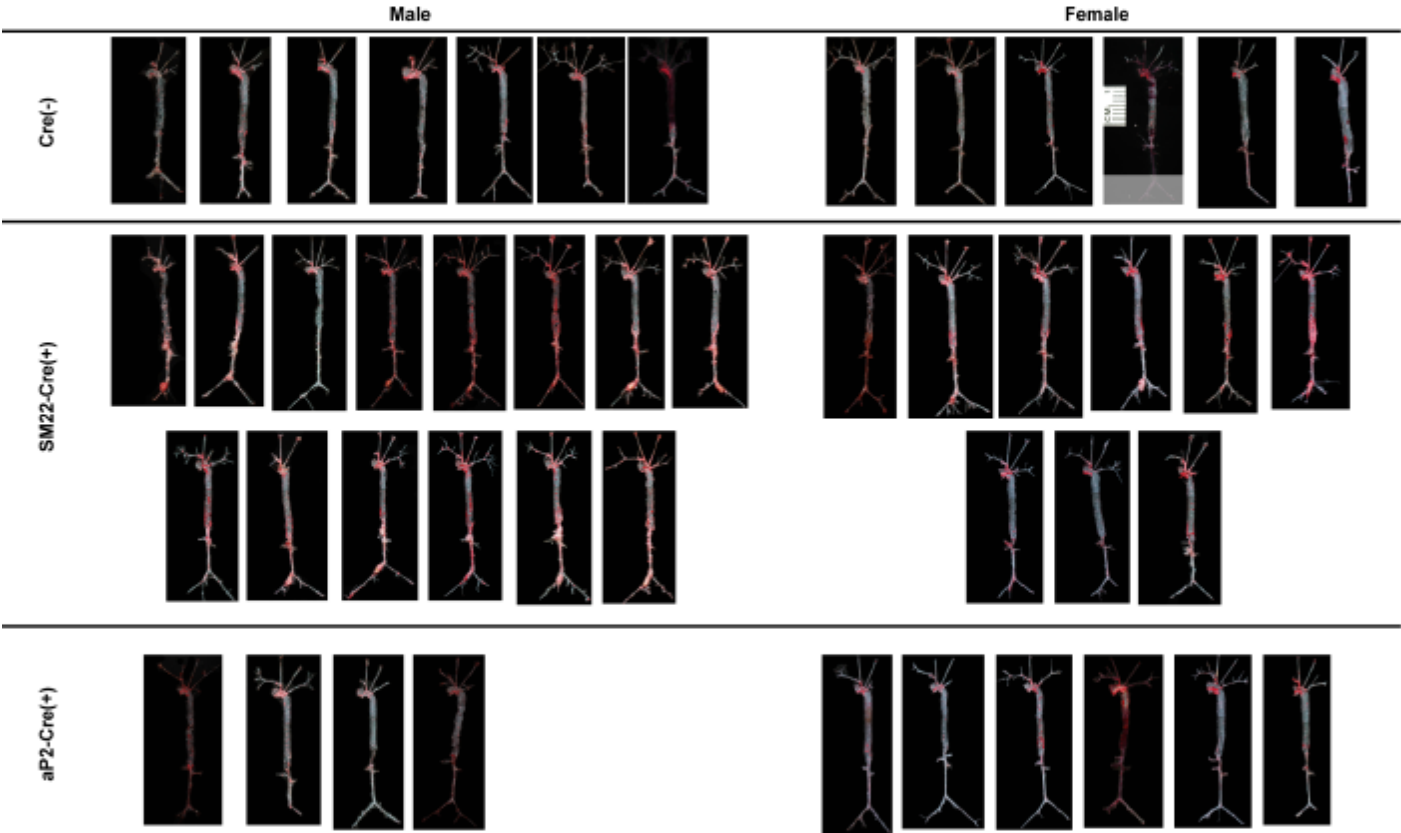


Figure S2. Gene expression of Acta2(α -SMA), Cre enzyme, MT1-MMP (MMP14), MMP2, MMP8, MMP9, MMP13, and MT2-MMP (MMP15) in primary VSMCs isolated from *Cre(-)* and *SM22 α -Cre(+)* *MMP14^{F/F}ApoE^{-/-}* mice. Almost complete suppression of MT1-MMP expression in primary VSMCs was confirmed coupled with SM22-dependent Cre expression. Expression of other MMPs was not affected. *** $P < 0.001$

