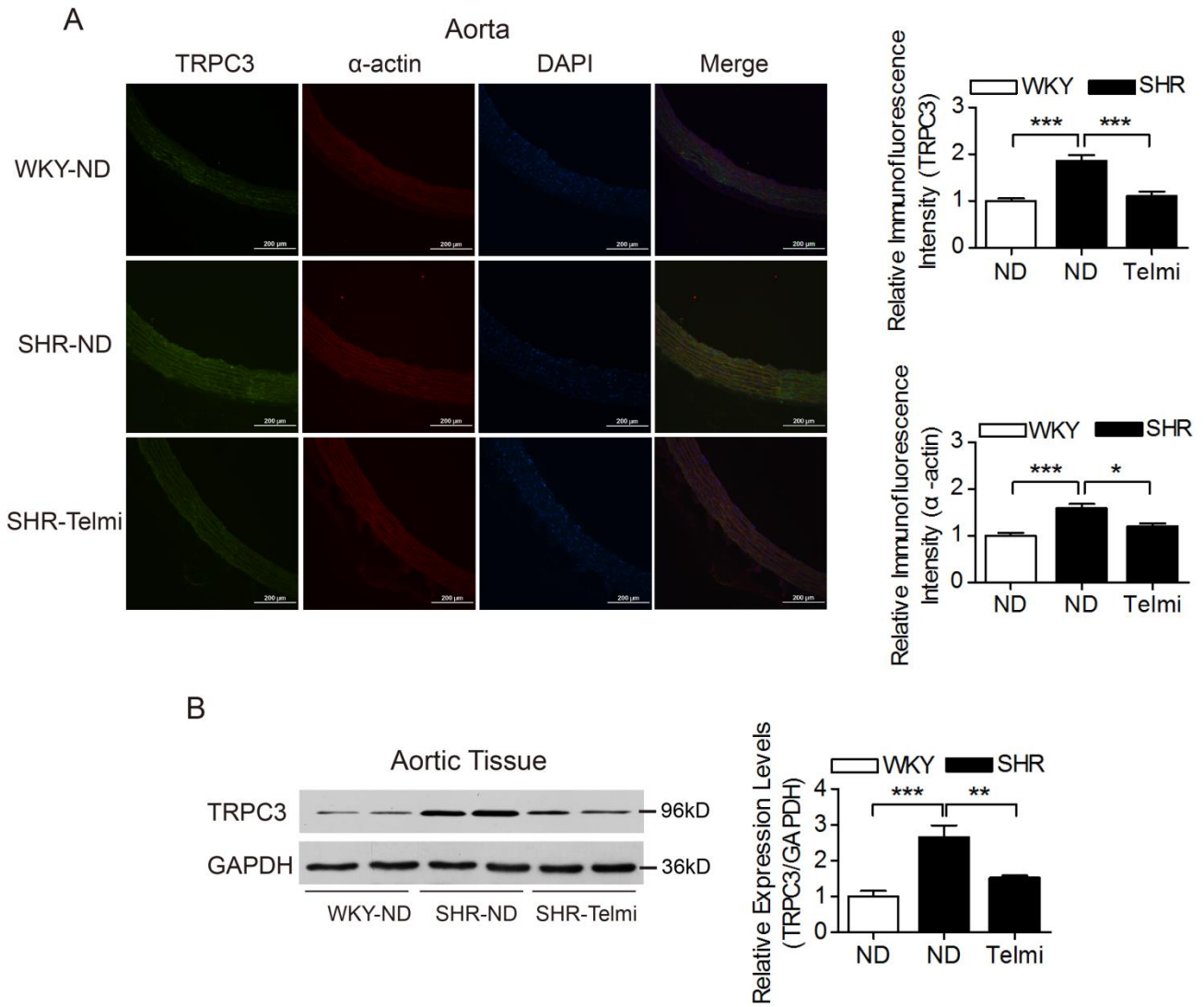
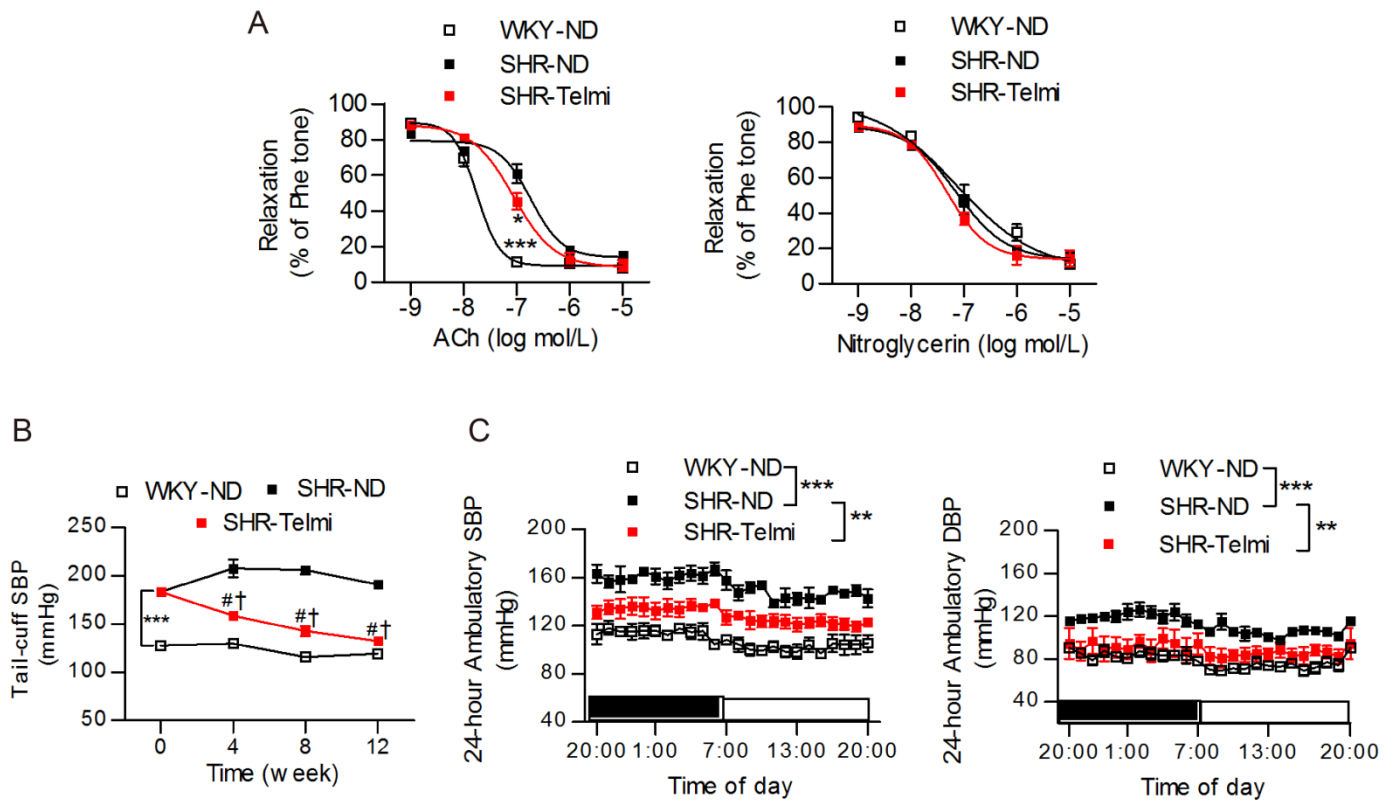


# **SUPPLEMENTAL MATERIAL**

**Figure S1.**



**Figure S2**



## Supplemental Figure Legends:

**Figure S1.** The effect of chronic telmisartan treatment on TRPC3 expression levels.

**A,** Representative images of the immunofluorescence staining of TRPC3,  $\alpha$ -smooth actin and DAPI using aortic sections from WKY rats and SHRs, subjected to or forgoing telmisartan intervention. Quantification of the intensities in each graph was presented in the right panel. N=6 per group. \* $P$ <0.05, \*\*\* $P$ <0.0001. **B,** Expression levels of TRPC3 in aortic tissues from these groups were detected using western blot. Quantification of western blot bands was presented as the amount of target protein / GAPDH levels. N=4 per group. \*\* $P$ <0.01, \*\*\* $P$ <0.0001.

**Figure S2.** The effect of chronic oral telmisartan intervention on blood pressure (BP) levels in SHRs.

**A,** Effects of telmisartan treatment on acetylcholine (ACh)- and nitroglycerin-induced relaxation in mesenteric arteries (MAs) from WKY rats and SHRs. N=8~12 per group. Concentration-response curves were analyzed by non-linear regression followed by Student's t-test or one-way ANOVA for comparisons between two groups or among more than two groups, respectively. \* $P$ <0.05 vs  $10^{-7}$ mol/L Ach-induced relaxation of SHR MAs; \*\*\* $P$ <0.0001 vs SHR. **B,** Effects of 12-week telmisartan intervention on the tail-cuff systolic blood pressure (SBP) levels of SHR. N=10 per group. \*\*\* $P$ <0.0001 vs WKY at baseline, # $P$ <0.0001 vs SHR-Telmi at baseline using repeated measures ANOVA, † $P$ <0.0001 vs SHR at the same time point. **C,** Effects of telmisartan intervention on the 24-hour ambulatory BP levels in SHRs. N=5 per group. \*\* $P$ <0.01, \*\*\* $P$ <0.0001.