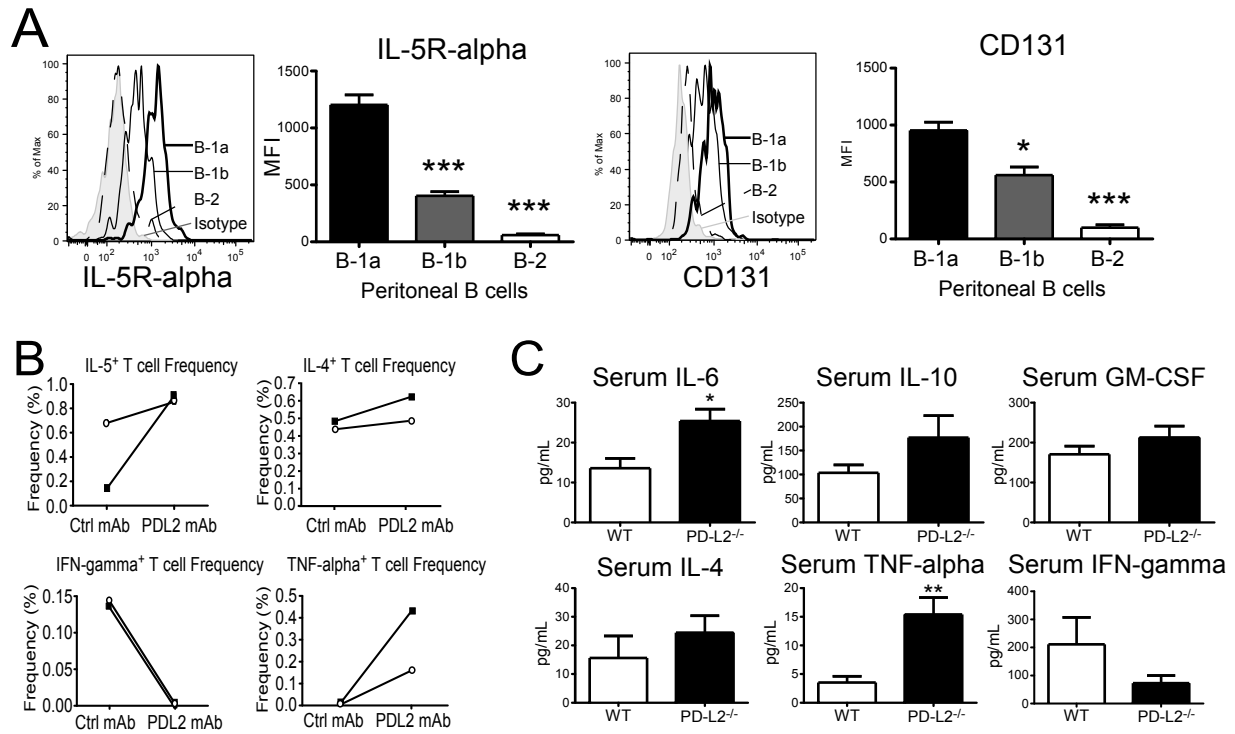


Supplemental Figure 1. PD-L2 regulates Ab production.

A) PPS-3-specific IgM levels in WT and PD-L2^{-/-} mice following immunization with Pevnar-13 or Pneumovax (1 μ g PPS equivalent i.p.). Serum samples were pre-blocked using 10 μ g/ml cell wall polysaccharide prior to performing PPS3-specific ELISAs. B) Total serum IgA in WT and PD-L2^{-/-} mice on ABX therapy. C) ELISPOT analysis of PC-specific IgG⁺ and IgA⁺ ASC spots in WT, PD-1^{-/-}, PD-L2^{-/-}, and PDL1^{-/-} mouse BM and spleen. D) ELISPOT analysis of PC-specific IgA⁺ ASC spot size in the BM and spleen (LEFT); representative image of PC-specific IgM⁺ ELISPOT from spleen (RIGHT; quantitative data in Fig. 3A, C). A, B and D analyzed by Student's t test; C analyzed by ANOVA with Dunnett Post Test (*p<0.05, ** p<0.01, *** p<0.001).



Supplemental Figure 2. PD-L2 regulates cytokine production.

A) IL-5Ra and CD131 expression amongst peritoneal B cell subsets. A representative histogram for IL-5Ra and CD131 and mean (MFI) expression levels are shown. B) Frequency of IL-4+, IL-5+, TNF-alpha+, and IFN-gamma+ T cells among T cells in 2-day cultures of munt splenocyte-WT PerC B-1 cells treated with PDL2 or control mAb; data from two independent experiments. C) Serum IL-4, IL-6, IL-10, GM-CSF, IFN-gamma, and TNF-alpha levels in naive WT and PD-L2^{-/-} mice (n=4 mice/group). A, C analyzed by Student's t test; (*p<0.05, ** p<0.01, *** p<0.001).